




554 West Sycamore Street, Louisville, CO 80027 - All Levels



 Single Family

 1600 SQFT

 3 Beds

 3 Baths

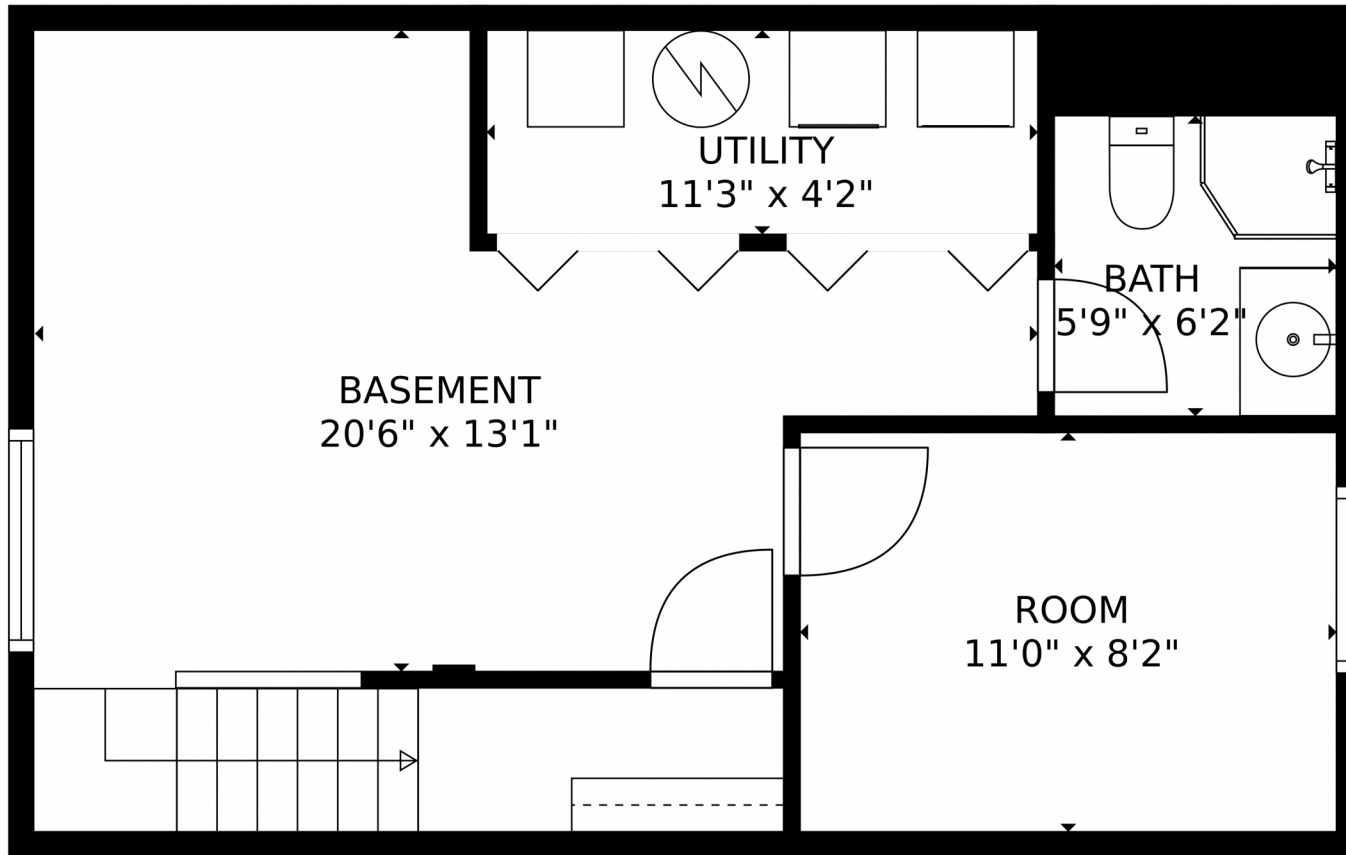


**Taylor Haas**  
303-665-7368  
taylorh@coloradorpm.com  
<https://www.coloradorpm.com/available-rental-properties-denver>



Scan code  
for more  
property  
details





**TOTAL: 1431 sq. ft**  
Below Ground: 436 sq. ft, FLOOR 2: 499 sq. ft, FLOOR 3: 496 sq. ft  
EXCLUDED AREAS: GARAGE: 315 sq. ft, PORCH: 32 sq. ft, PATIO: 189 sq. ft,  
FIREPLACE: 8 sq. ft  
MEASUREMENTS CALCULATED BY V1Photos.com ARE DEEMED HIGHLY RELIABLE BUT NOT GUARANTEED.



Disclaimer: Sizes and Dimensions are Approximate, Actual May Vary.



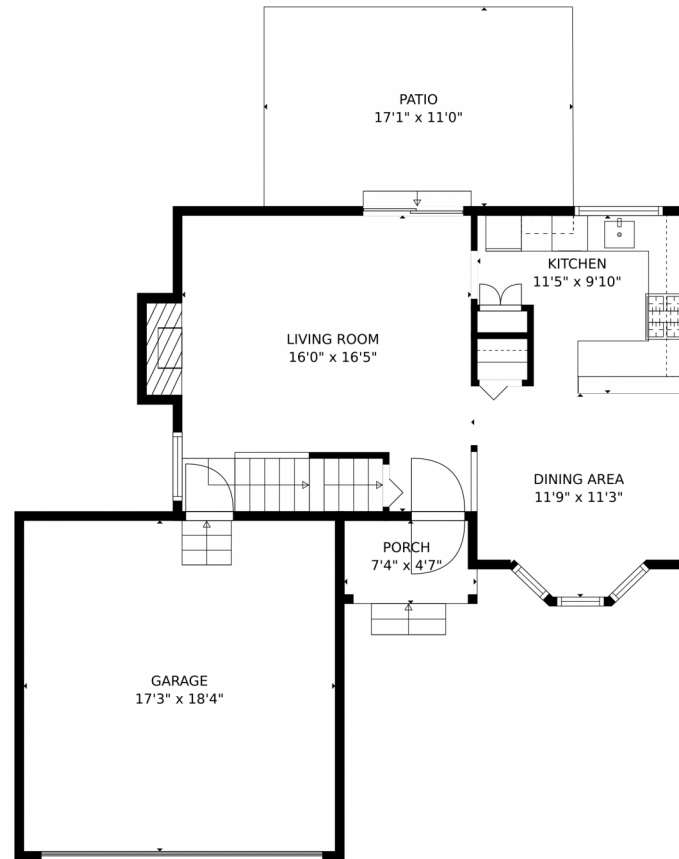
**Taylor Haas**  
303-665-7368  
taylorh@coloradorpm.com  
<https://www.coloradorpm.com/available-rental-properties-denver>



Scan code  
for more  
property  
details



# 554 West Sycamore Street, Louisville, CO 80027 – Main Level



**TOTAL: 1431 sq. ft**  
Below Ground: 436 sq. ft, FLOOR 2: 499 sq. ft, FLOOR 3: 496 sq. ft  
EXCLUDED AREAS: GARAGE: 315 sq. ft, PORCH: 32 sq. ft, PATIO: 189 sq. ft,  
FIREPLACE: 8 sq. ft  
MEASUREMENTS CALCULATED BY V1Photos.com ARE DEEMED HIGHLY RELIABLE BUT NOT GUARANTEED.



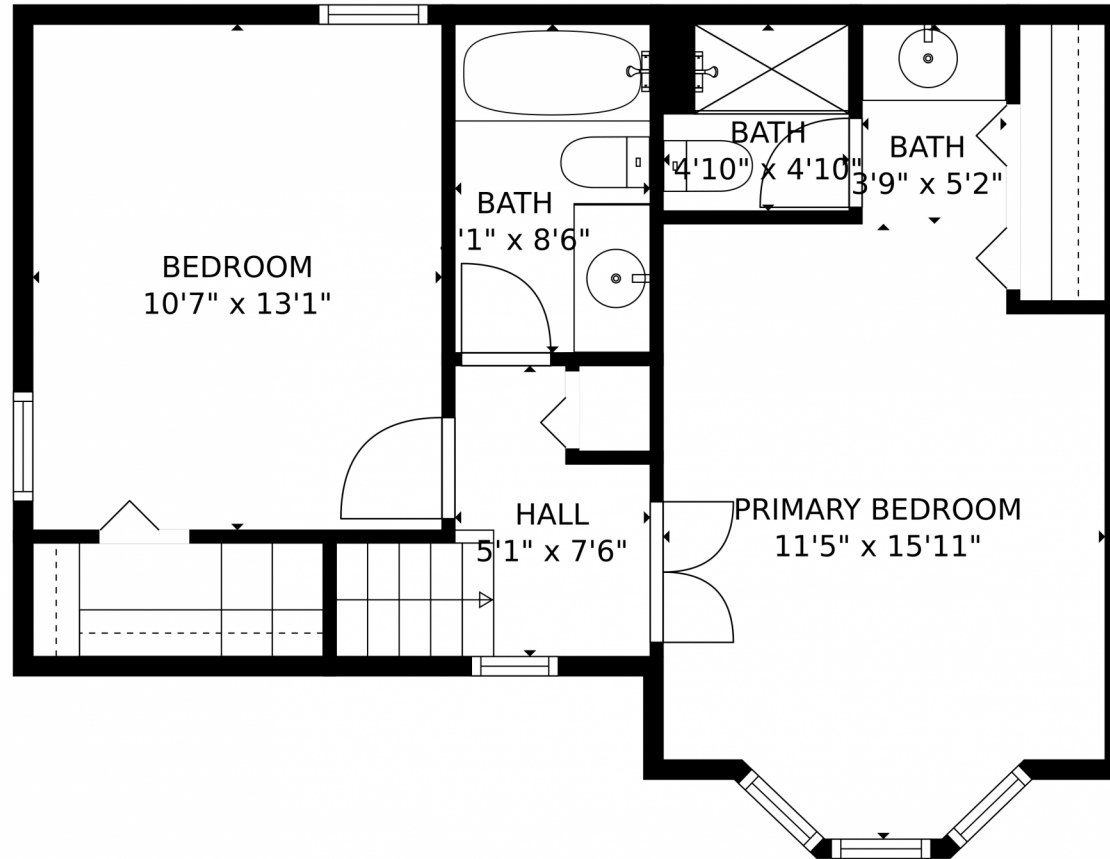
Disclaimer: Sizes and Dimensions are Approximate, Actual May Vary.



**Taylor Haas**  
303-665-7368  
taylorh@coloradorpm.com  
<https://www.coloradorpm.com/available-rental-properties-denver>



554 West Sycamore Street, Louisville, CO 80027 – Upper Level



**TOTAL: 1431 sq. ft**  
Below Ground: 436 sq. ft, FLOOR 2: 499 sq. ft, FLOOR 3: 496 sq. ft  
EXCLUDED AREAS: GARAGE: 315 sq. ft, PORCH: 32 sq. ft, PATIO: 189 sq. ft,  
FIREPLACE: 8 sq. ft  
MEASUREMENTS CALCULATED BY V1Photos.com ARE DEEMED HIGHLY RELIABLE BUT NOT GUARANTEED.



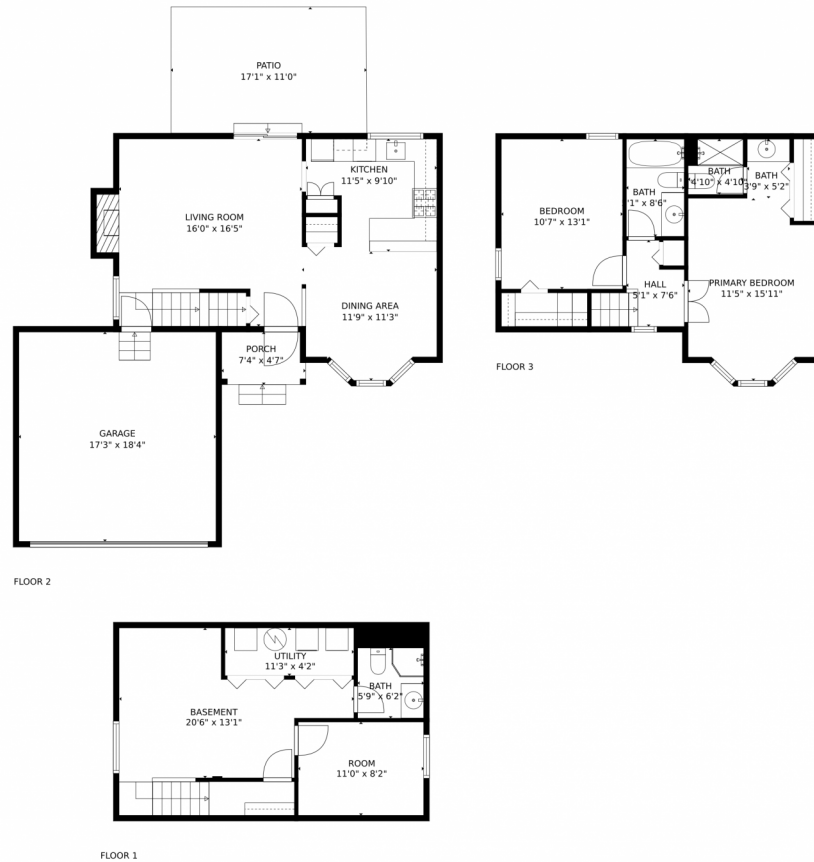
Disclaimer: Sizes and Dimensions are Approximate, Actual May Vary.



**Taylor Haas**  
303-665-7368  
taylorh@coloradorpm.com  
<https://www.coloradorpm.com/available-rental-properties-denver>



# 554 West Sycamore Street, Louisville, CO 80027 – All Levels



**TOTAL: 1431 sq. ft**  
Below Ground: 436 sq. ft, FLOOR 2: 499 sq. ft, FLOOR 3: 496 sq. ft  
EXCLUDED AREAS: GARAGE: 315 sq. ft, PORCH: 32 sq. ft, PATIO: 189 sq. ft,  
FIREPLACE: 8 sq. ft

MEASUREMENTS CALCULATED BY V1Photos.com ARE DEEMED HIGHLY RELIABLE BUT NOT GUARANTEED.



Disclaimer: Sizes and Dimensions are Approximate, Actual May Vary.



**Taylor Haas**

303-665-7368

taylorh@coloradorpm.com

<https://www.coloradorpm.com/available-rental-properties-denver>



Scan code  
for more  
property  
details

