



10784 North County Road 7  
Wellington, CO 80549  
COMMUNITY: Wellington, Larimer County, CO

MLS # 1012207  
PRICE \$1,549,900



Single Family



2901 SQFT



3 Beds



3/2 Baths



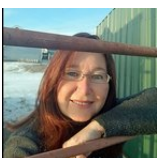
4 Car



10 Acre

## PROPERTY DETAILS

Ten acres equestrian Horse Property in Wellington Colorado. Minutes to Fort Collins, Colorado State University state-of the art Equine Center and WY. Remodeled 2021/2022/2023. BRAND NEW 80x50 barn with stalls, auto waterers tack rooms and office space, 130x140 outdoor arena, round pen, 5 paddocks w/auto-waterers, 5 acres of pastures for horses to run and graze, 68x32 hay storage/equipment barn. The 2500sf GARAGE/SHOP WITH A MODERN 870SF BONUS not included on the total square foot of the home. Near downtown Wellington, Fort Collins and Wyoming. Easy access to I-25.



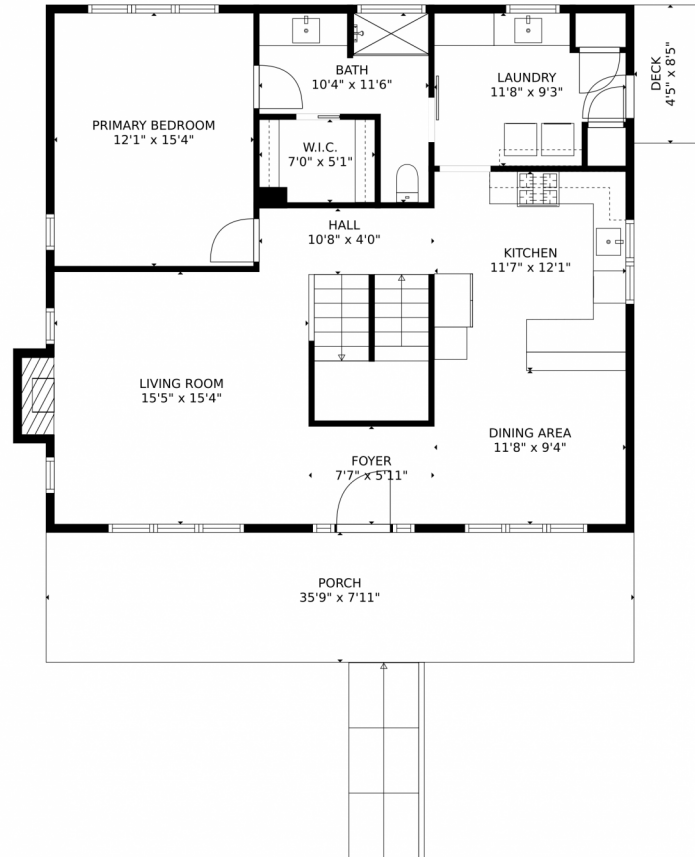
**Claudia Hewell**  
970-672-6976  
claudia@horsepropertydeals.com



Scan code  
for more  
property  
details



# 10784 North County Road 7, Wellington, CO 80549 – Main Level



**TOTAL: 2750 sq. ft**  
Below Ground: 73 sq. ft, FLOOR 2: 1068 sq. ft, FLOOR 3: 1081 sq. ft, FLOOR 4: 528 sq. ft  
EXCLUDED AREAS: BASEMENT: 947 sq. ft, W.I.C.: 41 sq. ft, GARAGE: 810 sq. ft,  
PATIO: 402 sq. ft, PORCH: 282 sq. ft, DECK: 37 sq. ft,  
FIREPLACE: 11 sq. ft, OPEN TO BELOW: 402 sq. ft

MEASUREMENTS CALCULATED BY V1Photos.com ARE DEEMED HIGHLY RELIABLE BUT NOT GUARANTEED.



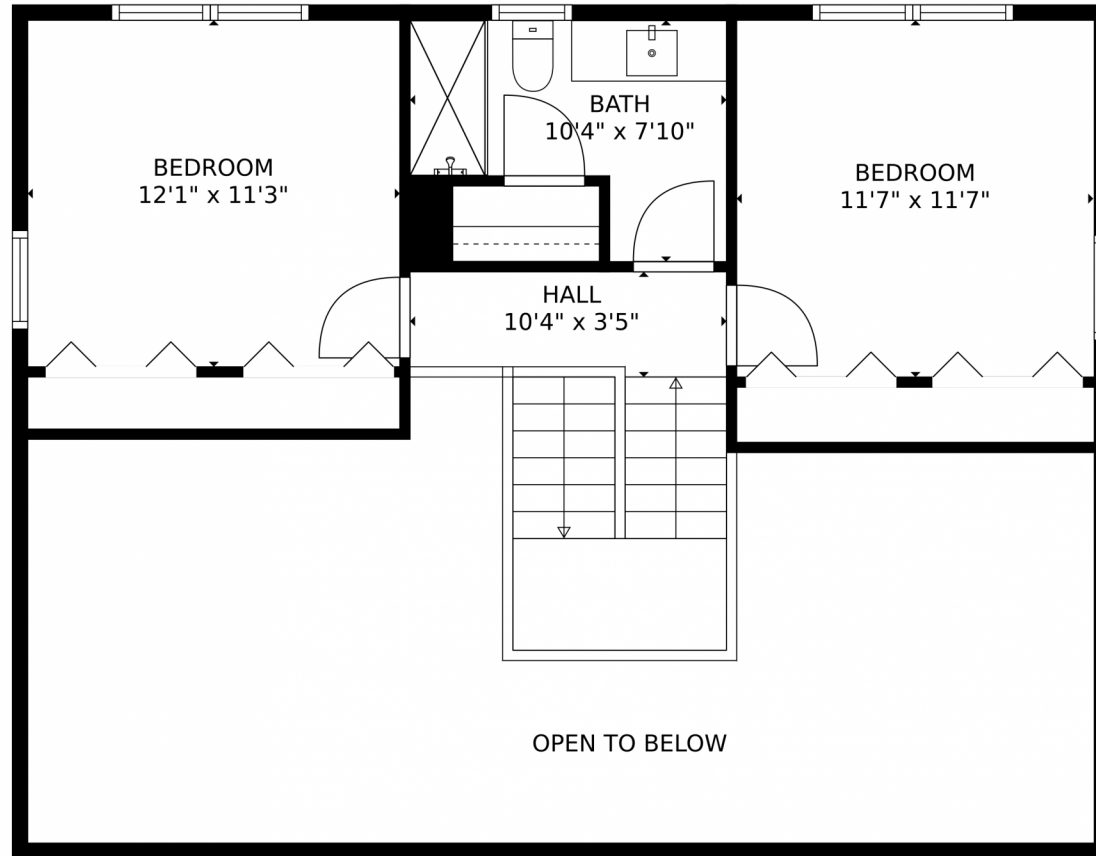
Disclaimer: Sizes and Dimensions are Approximate, Actual May Vary.



**Claudia Hewell**  
970-672-6976  
claudia@horsepropertydeals.com



10784 North County Road 7, Wellington, CO 80549 – Upper Level



**TOTAL: 2750 sq. ft**

Below Ground: 73 sq. ft, FLOOR 2: 1068 sq. ft, FLOOR 3: 1081 sq. ft, FLOOR 4: 528 sq. ft  
EXCLUDED AREAS: BASEMENT: 947 sq. ft, W.I.C.: 41 sq. ft, GARAGE: 810 sq. ft,  
PATIO: 402 sq. ft, PORCH: 282 sq. ft, DECK: 37 sq. ft,  
FIREPLACE: 11 sq. ft, OPEN TO BELOW: 402 sq. ft

MEASUREMENTS CALCULATED BY V1Photos.com ARE DEEMED HIGHLY RELIABLE BUT NOT GUARANTEED.



Disclaimer: Sizes and Dimensions are Approximate, Actual May Vary.

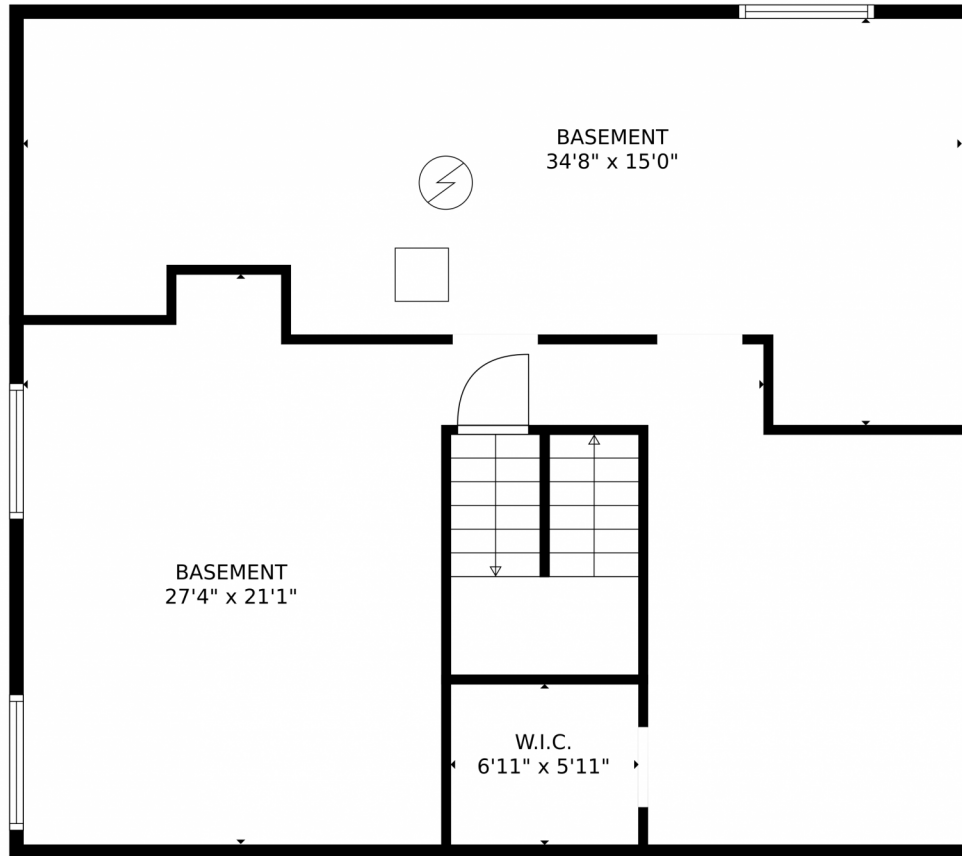


**Claudia Hewell**  
970-672-6976  
claudia@horsepropertydeals.com





10784 North County Road 7, Wellington, CO 80549 – Lower Level



**TOTAL: 2750 sq. ft**  
Below Ground: 73 sq. ft, FLOOR 2: 1068 sq. ft, FLOOR 3: 1081 sq. ft, FLOOR 4: 528 sq. ft  
EXCLUDED AREAS: BASEMENT: 947 sq. ft, W.I.C.: 41 sq. ft, GARAGE: 810 sq. ft,  
PATIO: 402 sq. ft, PORCH: 282 sq. ft, DECK: 37 sq. ft,  
FIREPLACE: 11 sq. ft, OPEN TO BELOW: 402 sq. ft

MEASUREMENTS CALCULATED BY V1Photos.com ARE DEEMED HIGHLY RELIABLE BUT NOT GUARANTEED.



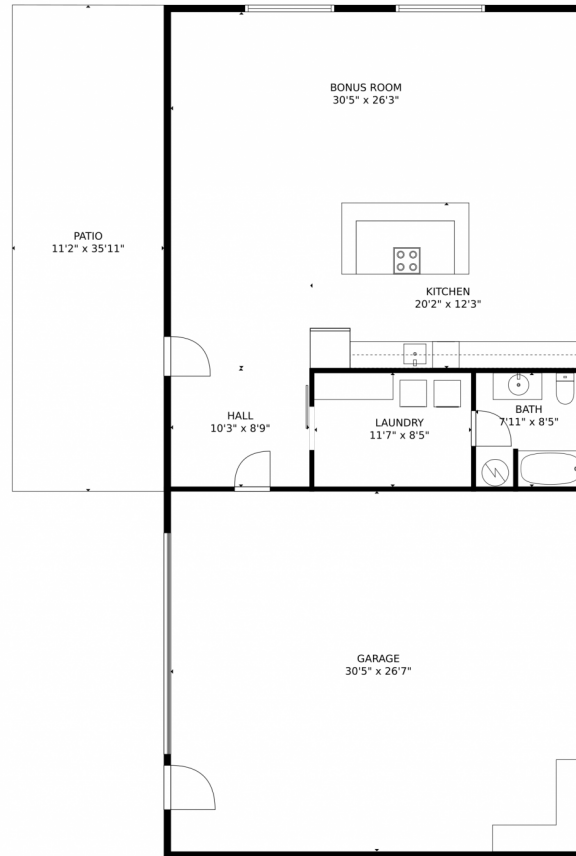
Disclaimer: Sizes and Dimensions are Approximate, Actual May Vary.



**Claudia Hewell**  
970-672-6976  
claudia@horsepropertydeals.com



# 10784 North County Road 7, Wellington, CO 80549 – Garage



**TOTAL: 2750 sq. ft**  
Below Ground: 73 sq. ft, FLOOR 2: 1068 sq. ft, FLOOR 3: 1081 sq. ft, FLOOR 4: 528 sq. ft  
EXCLUDED AREAS: BASEMENT: 947 sq. ft, W.I.C.: 41 sq. ft, GARAGE: 810 sq. ft,  
PATIO: 402 sq. ft, PORCH: 282 sq. ft, DECK: 37 sq. ft,  
FIREPLACE: 11 sq. ft, OPEN TO BELOW: 402 sq. ft

MEASUREMENTS CALCULATED BY V1Photos.com ARE DEEMED HIGHLY RELIABLE BUT NOT GUARANTEED.



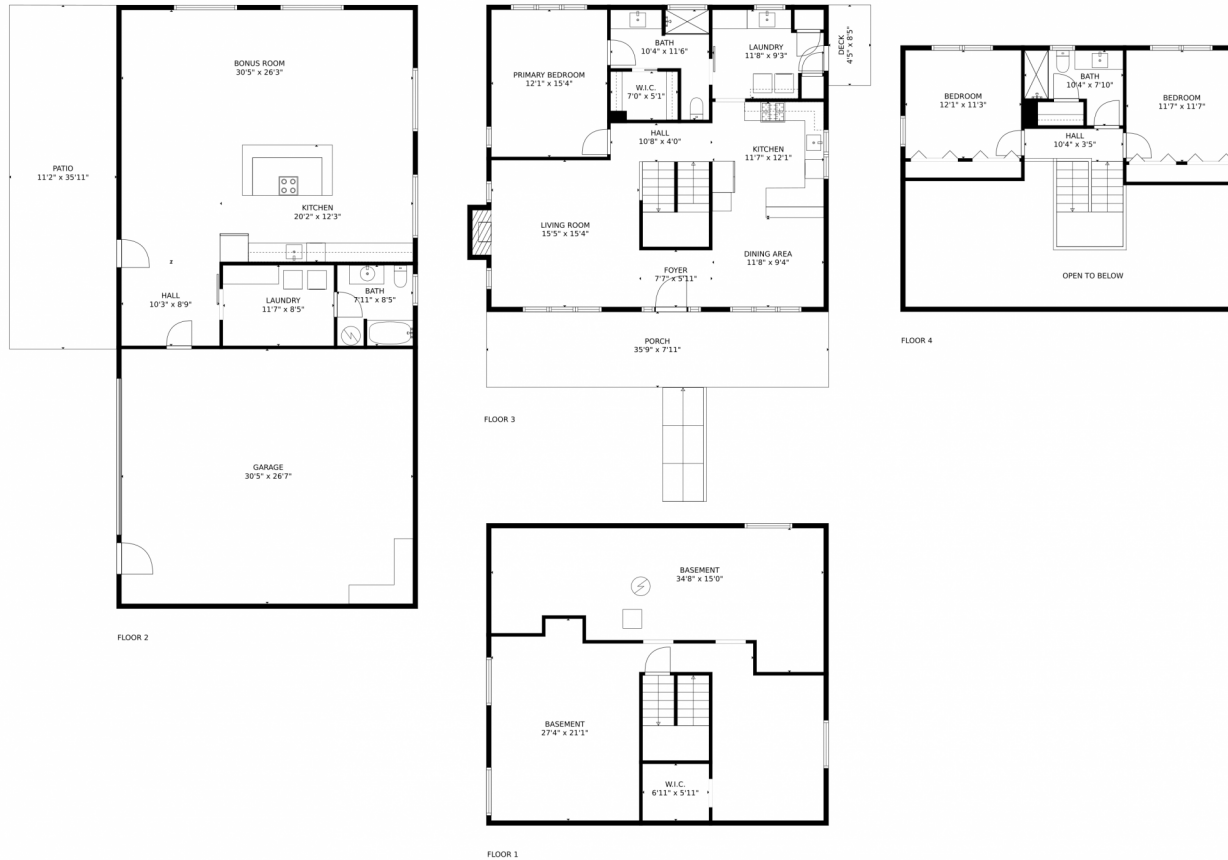
Disclaimer: Sizes and Dimensions are Approximate, Actual May Vary.



**Claudia Hewell**  
970-672-6976  
claudia@horsepropertydeals.com



# 10784 North County Road 7, Wellington, CO 80549 – All Levels



**TOTAL: 2750 sq. ft**  
Below Ground: 73 sq. ft, FLOOR 2: 1068 sq. ft, FLOOR 3: 1081 sq. ft, FLOOR 4: 528 sq. ft  
EXCLUDED AREAS: BASEMENT: 947 sq. ft, W.I.C.: 41 sq. ft, GARAGE: 810 sq. ft,  
PATIO: 402 sq. ft, PORCH: 282 sq. ft, DECK: 37 sq. ft,  
FIREPLACE: 11 sq. ft, OPEN TO BELOW: 402 sq. ft

MEASUREMENTS CALCULATED BY V1Photos.com ARE DEEMED HIGHLY RELIABLE BUT NOT GUARANTEED.

Disclaimer: Sizes and Dimensions are Approximate, Actual May Vary.



**Claudia Hewell**  
970-672-6976  
claudia@horsepropertydeals.com

