



2314 Fairway Wood Circle  
 Castle Rock, CO 80109  
 COMMUNITY: Red Hawk

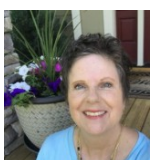
MLS # 2433878  
 PRICE \$969,000



Single Family   4083 SQFT   5 Beds   4/1 Baths   3 Car   0.23 Acre

## PROPERTY DETAILS

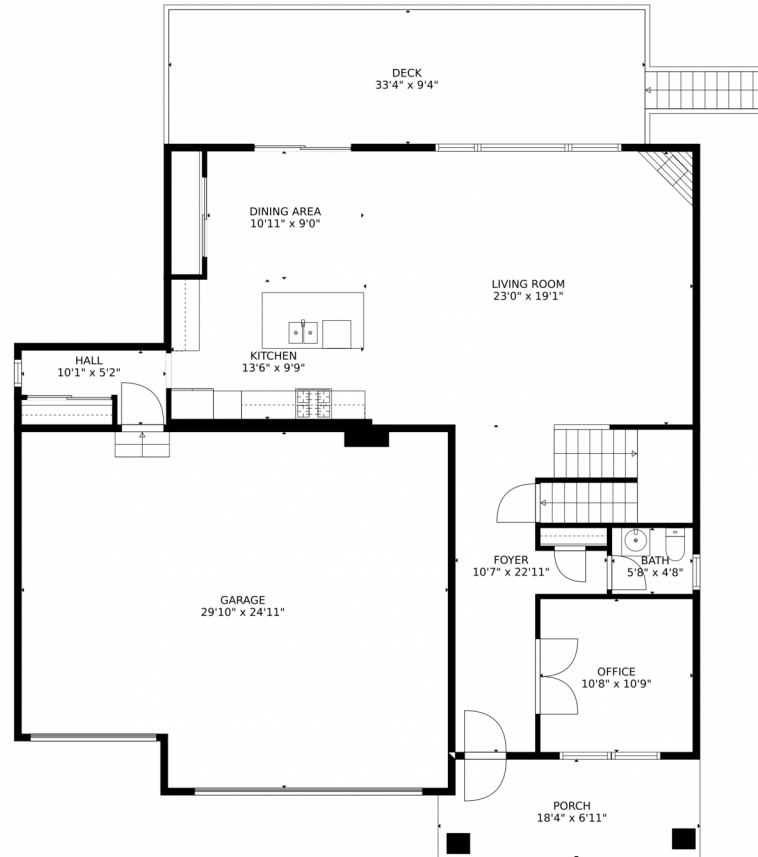
Welcome to this stunning property in Red Hawk. This Single Family home has 5 bedrooms, 4 full bathrooms, and 1 half bathroom. The elegant foyer sets the tone with a towering ceiling and light hardwood/wood-style flooring. The open floor plan allows for easy flow between the main living areas. The well-appointed kitchen is a chef's delight with stainless steel appliances and a kitchen island. The living room is welcoming with a stone fireplace and hardwood/wood-style floors. The primary bedroom is a private retreat with an ensuite bath. Outside, the wooden deck and spacious yard offer a perfect space for outdoor activities. The Red Hawk community offers stunning mountain and water views. Don't miss the opportunity to make this exquisite property your new home. Schedule a showing today.



**Deni Niethammer**  
 828-450-8248  
 hybridmlslistings@gmail.com



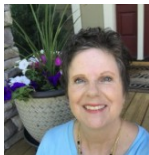
# 2314 Fairway Wood Circle, Castle Rock, CO 80109 – Main Level



**TOTAL: 3542 sq. ft**  
Below Ground: 913 sq. ft, FLOOR 2: 1133 sq. ft, FLOOR 3: 1496 sq. ft  
EXCLUDED AREAS: PATIO: 820 sq. ft, STORAGE: 155 sq. ft, PORCH: 124 sq. ft,  
DECK: 335 sq. ft, GARAGE: 705 sq. ft, OPEN TO BELOW: 39 sq. ft  
MEASUREMENTS CALCULATED BY V1Photos.com ARE DEEMED HIGHLY RELIABLE BUT NOT GUARANTEED.



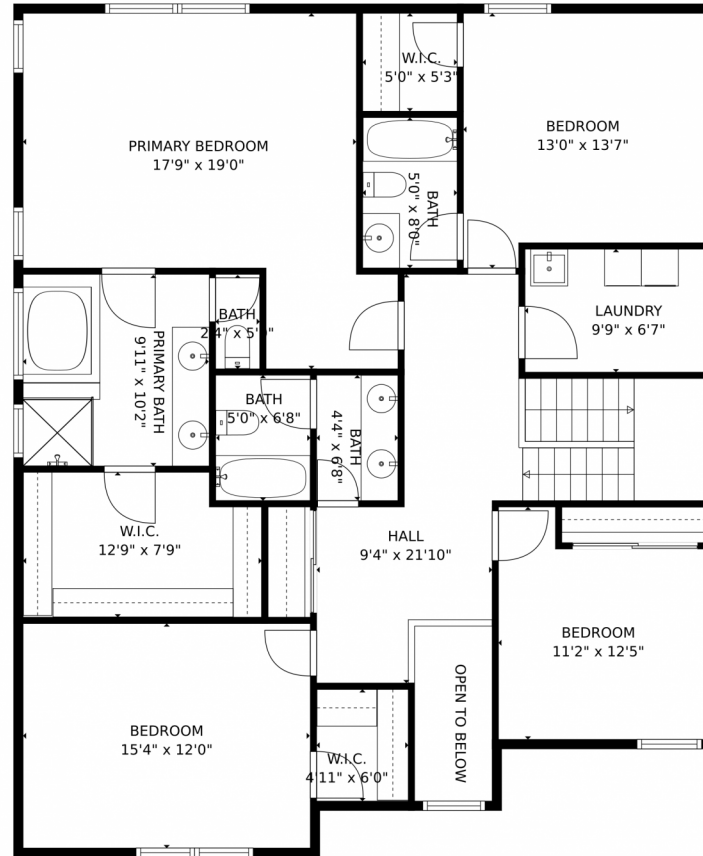
Disclaimer: Sizes and Dimensions are Approximate, Actual May Vary.



**Deni Niethammer**  
828-450-8248  
hybridmlslistings@gmail.com



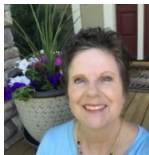
# 2314 Fairway Wood Circle, Castle Rock, CO 80109 – Upper Level



**TOTAL: 3542 sq. ft**  
Below Ground: 913 sq. ft, FLOOR 2: 1133 sq. ft, FLOOR 3: 1496 sq. ft  
EXCLUDED AREAS: PATIO: 820 sq. ft, STORAGE: 155 sq. ft, PORCH: 124 sq. ft,  
DECK: 335 sq. ft, GARAGE: 705 sq. ft, OPEN TO BELOW: 39 sq. ft  
MEASUREMENTS CALCULATED BY V1Photos.com ARE DEEMED HIGHLY RELIABLE BUT NOT GUARANTEED.



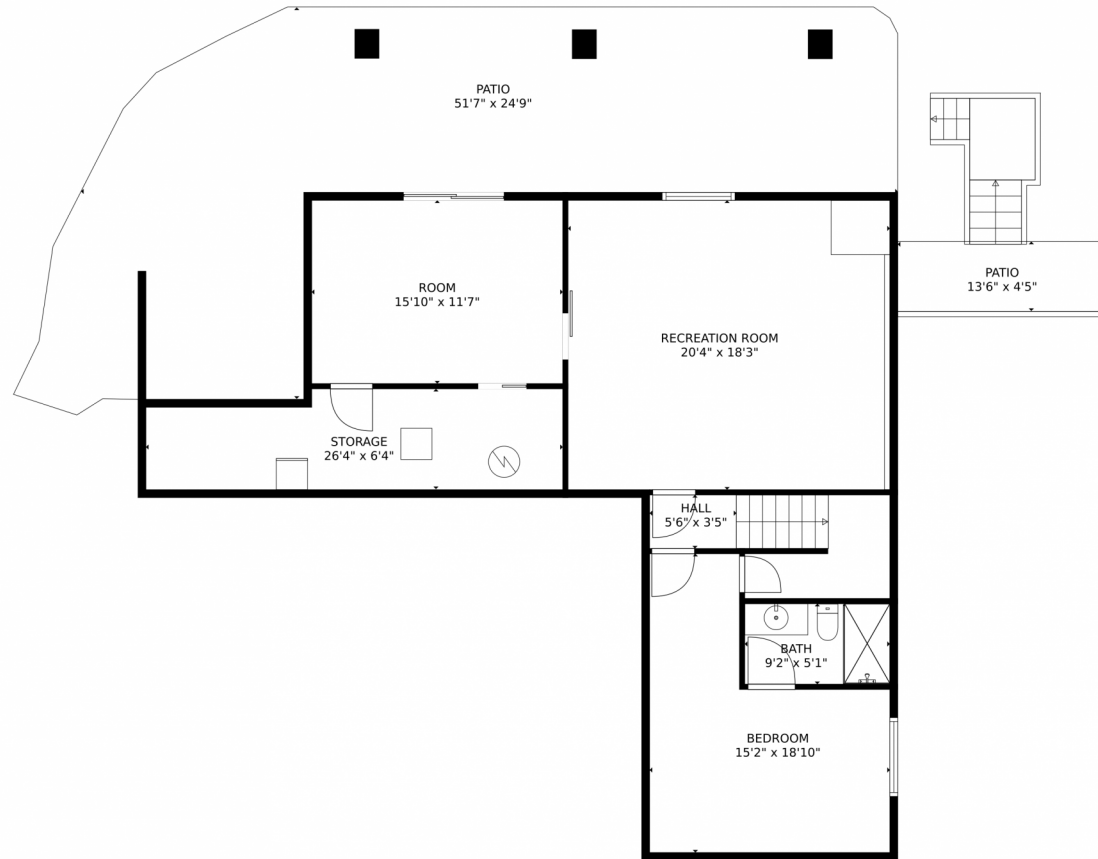
Disclaimer: Sizes and Dimensions are Approximate, Actual May Vary.



**Deni Niethammer**  
828-450-8248  
hybridmlslistings@gmail.com



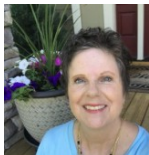
# 2314 Fairway Wood Circle, Castle Rock, CO 80109 — Lower Level



**TOTAL: 3542 sq. ft**  
Below Ground: 913 sq. ft, FLOOR 2: 1133 sq. ft, FLOOR 3: 1496 sq. ft  
EXCLUDED AREAS: PATIO: 820 sq. ft, STORAGE: 155 sq. ft, PORCH: 124 sq. ft,  
DECK: 335 sq. ft, GARAGE: 705 sq. ft, OPEN TO BELOW: 39 sq. ft  
MEASUREMENTS CALCULATED BY V1Photos.com ARE DEEMED HIGHLY RELIABLE BUT NOT GUARANTEED.



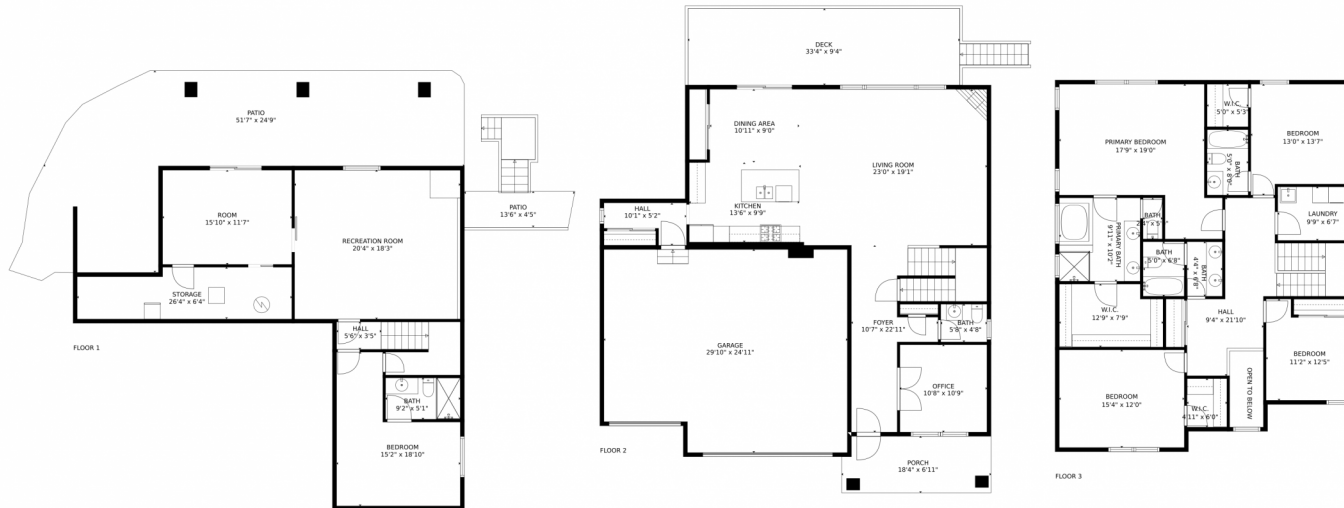
Disclaimer: Sizes and Dimensions are Approximate, Actual May Vary.



**Deni Niethammer**  
828-450-8248  
hybridmlslistings@gmail.com



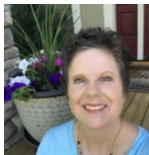
# 2314 Fairway Wood Circle, Castle Rock, CO 80109 – All Levels



**TOTAL: 3542 sq. ft**  
Below Ground: 913 sq. ft, FLOOR 2: 1133 sq. ft, FLOOR 3: 1496 sq. ft  
EXCLUDED AREAS: PATIO: 820 sq. ft, STORAGE: 155 sq. ft, PORCH: 124 sq. ft,  
DECK: 335 sq. ft, GARAGE: 705 sq. ft, OPEN TO BELOW: 39 sq. ft  
MEASUREMENTS CALCULATED BY V1Photos.COM ARE DEEMED HIGHLY RELIABLE BUT NOT GUARANTEED.



Disclaimer: Sizes and Dimensions are Approximate, Actual May Vary.



**Deni Niethammer**  
828-450-8248  
hybridmlslistings@gmail.com

