




 Single Family

 1498 SQFT

 4 Beds

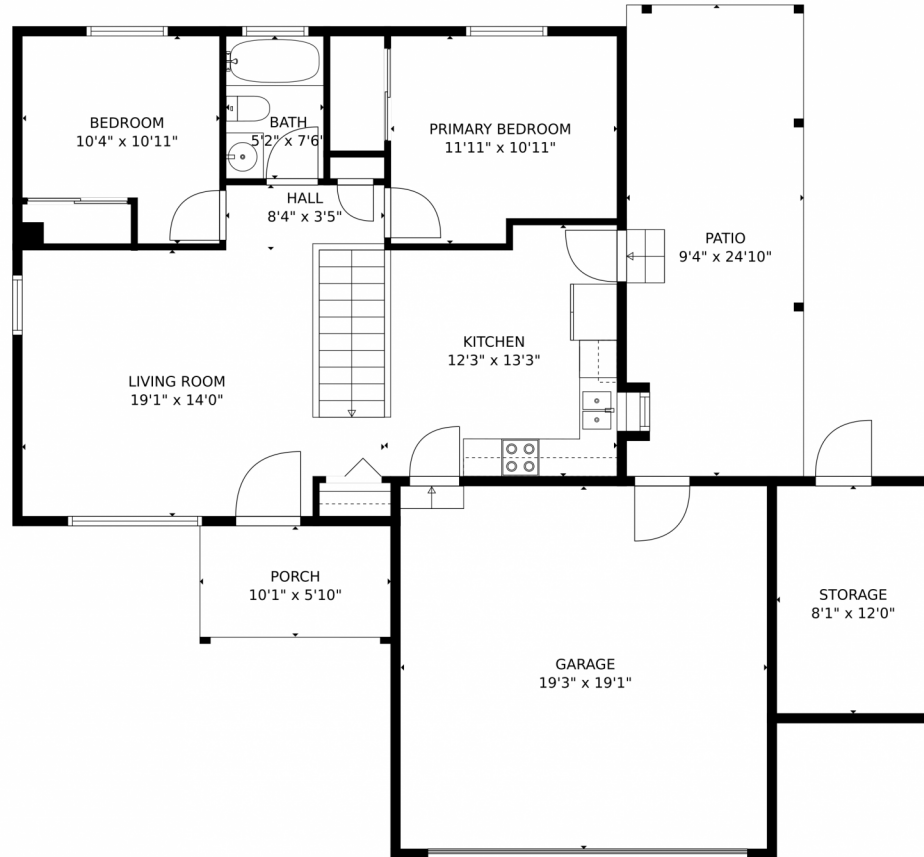
 2 Baths



**Taylor Haas**  
303-665-7368  
taylorh@coloradorpm.com  
<https://www.coloradorpm.com/available-rental-properties-denver>



# 8518 Willows Place, Parker, CO 80134 – 1st Floor



**TOTAL: 1341 sq. ft**  
Below Ground: 574 sq. ft, FLOOR 2: 767 sq. ft  
EXCLUDED AREAS: UTILITY: 113 sq. ft, GARAGE: 369 sq. ft, STORAGE: 97 sq. ft,  
PORCH: 59 sq. ft, PATIO: 228 sq. ft, EMBEDDED WINDOW: 4 sq. ft  
MEASUREMENTS CALCULATED BY V1Photos.com ARE DEEMED HIGHLY RELIABLE BUT NOT GUARANTEED.



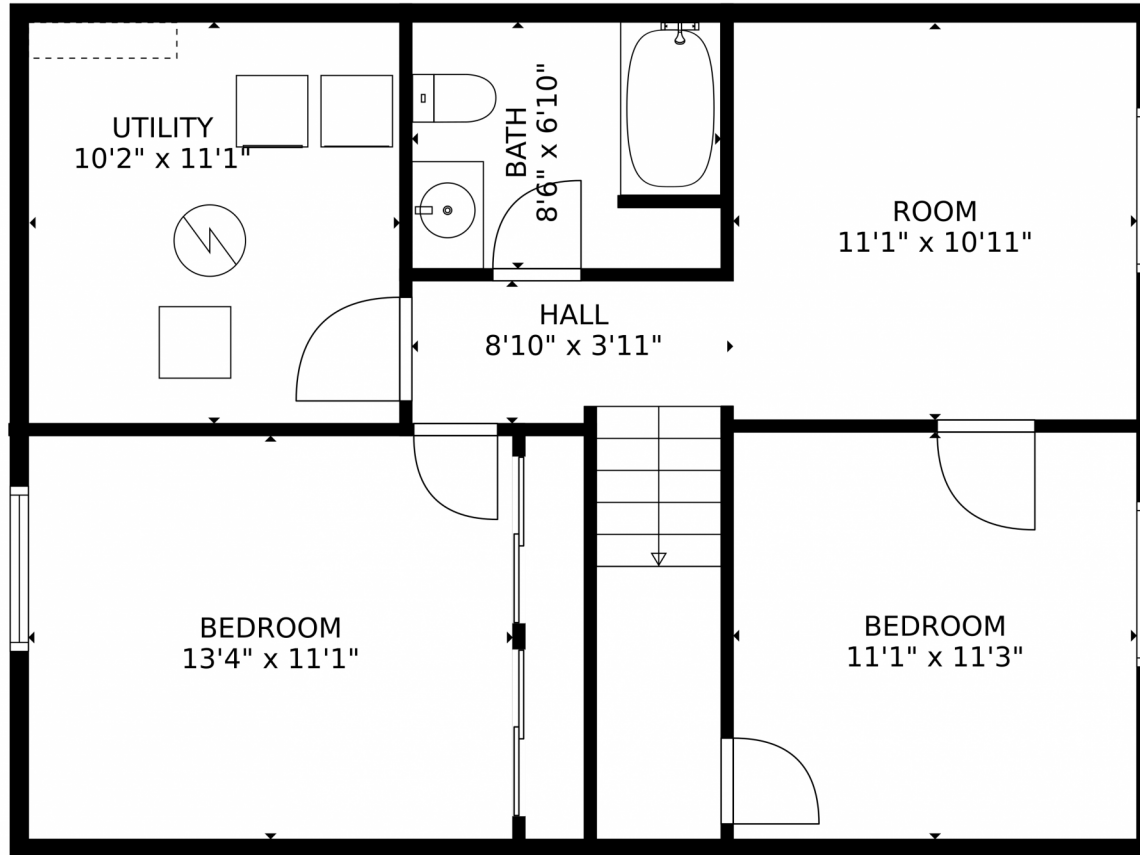
Disclaimer: Sizes and Dimensions are Approximate, Actual May Vary.



**Taylor Haas**  
303-665-7368  
taylorh@coloradorpm.com  
<https://www.coloradorpm.com/available-rental-properties-denver>



8518 Willows Place, Parker, CO 80134 – Basement



**TOTAL: 1341 sq. ft**  
Below Ground: 574 sq. ft, FLOOR 2: 767 sq. ft  
EXCLUDED AREAS: UTILITY: 113 sq. ft, GARAGE: 369 sq. ft, STORAGE: 97 sq. ft,  
PORCH: 59 sq. ft, PATIO: 228 sq. ft, EMBEDDED WINDOW: 4 sq. ft  
MEASUREMENTS CALCULATED BY V1Photos.com ARE DEEMED HIGHLY RELIABLE BUT NOT GUARANTEED.



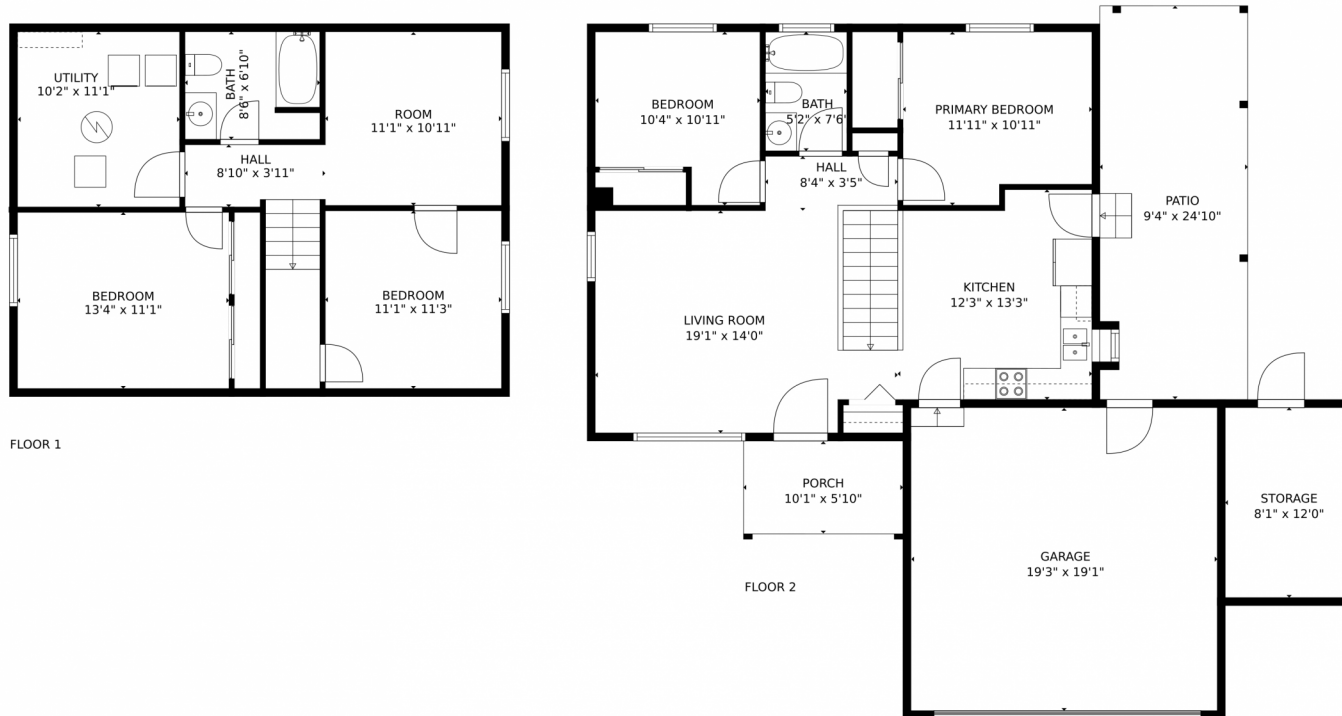
Disclaimer: Sizes and Dimensions are Approximate, Actual May Vary.



**Taylor Haas**  
303-665-7368  
taylorh@coloradorpm.com  
<https://www.coloradorpm.com/available-rental-properties-denver>



# 8518 Willows Place, Parker, CO 80134 – All Floors



**TOTAL: 1341 sq. ft**  
Below Ground: 574 sq. ft, FLOOR 2: 767 sq. ft  
EXCLUDED AREAS: UTILITY: 113 sq. ft, GARAGE: 369 sq. ft, STORAGE: 97 sq. ft,  
PORCH: 59 sq. ft, PATIO: 228 sq. ft, EMBEDDEDWINDOW: 4 sq. ft  
MEASUREMENTS CALCULATED BY V1Photos.com ARE DEEMED HIGHLY RELIABLE BUT NOT GUARANTEED.



Disclaimer: Sizes and Dimensions are Approximate, Actual May Vary.



**Taylor Haas**  
303-665-7368  
taylorh@coloradorpm.com  
<https://www.coloradorpm.com/available-rental-properties-denver>

