




1328 Wandering Willow Way  
Loxahatchee, FL 33470

COMMUNITY: Arden



 Single Family

 2379 SQFT

 4 Beds

 3 Baths

 2 Car

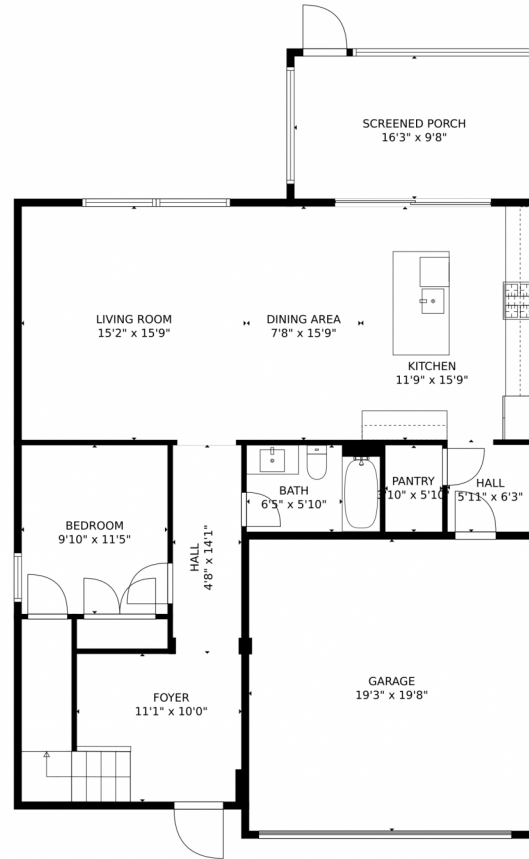


**Richard Gustke**  
954-218-2214  
richard.gustke31@gmail.com  
<https://richardgustke.balistreri.com/>



Scan code  
for more  
property  
details





**TOTAL: 2312 sq. ft**  
FLOOR 1: 1031 sq. ft, FLOOR 2: 1281 sq. ft  
EXCLUDED AREAS: GARAGE: 379 sq. ft, SCREENED PORCH: 156 sq. ft, OPEN TO BELOW: 97 sq. ft  
MEASUREMENTS CALCULATED BY V1Photos.com ARE DEEMED HIGHLY RELIABLE BUT NOT GUARANTEED.

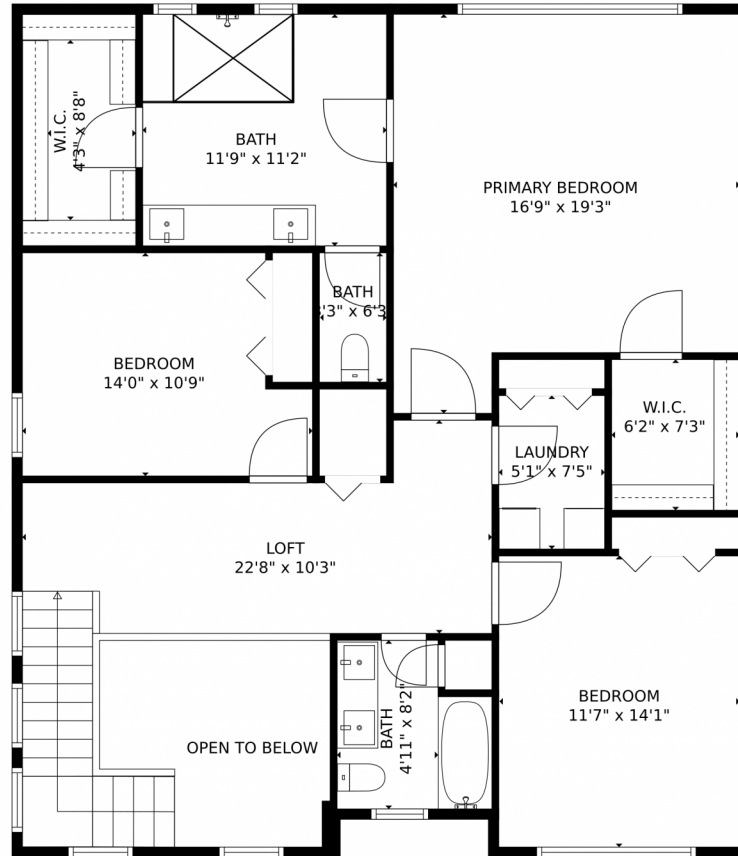


Disclaimer: Sizes and Dimensions are Approximate, Actual May Vary.



**Richard Gustke**  
954-218-2214  
richard.gustke31@gmail.com  
<https://richardgustke.balistreri.com/>





**TOTAL: 2312 sq. ft**  
FLOOR 1: 1031 sq. ft, FLOOR 2: 1281 sq. ft  
EXCLUDED AREAS: GARAGE: 379 sq. ft, SCREENED PORCH: 156 sq. ft, OPEN TO BELOW: 97 sq. ft  
MEASUREMENTS CALCULATED BY V1Photos.com ARE DEEMED HIGHLY RELIABLE BUT NOT GUARANTEED.



Disclaimer: Sizes and Dimensions are Approximate, Actual May Vary.



**Richard Gustke**  
954-218-2214  
richard.gustke31@gmail.com  
<https://richardgustke.balistreri.com/>

