



34511 East 10th Drive  
 Watkins, CO 80137  
 COMMUNITY: Watkins Farm

MLS # 3516835

PRICE  
 \$1,300,000



Single Family   6342 SQFT   5 Beds   5/2 Baths   5 Car

## PROPERTY DETAILS

Welcome to this exquisite property in the prestigious Watkins Farm community. This single-family home offers 6342 sqft of living space, 5 bedrooms, 5 full bathrooms, and 2 half bathrooms. It's a true masterpiece of design and craftsmanship. The front of the house features an impeccable facade with a garage and front yard. Solar panels on the roof add energy efficiency and modern elegance.

Inside, a grand living room with high vaulted ceilings, a stone fireplace, and light hardwood floors awaits. The adjacent chef's dream kitchen offers stainless steel appliances, a kitchen island, and stone countertops. The dining area with a notable chandelier is perfect for formal meals.

The primary bedroom is a luxurious retreat with a tray ceiling, light wood flooring, and a ceiling fan. The ensuite bathroom is a spa-like oasis with a double vanity, shower, bath, and hardwood floors. The walk-in closet provides ample storage.

Outside, enjoy the deck and patio area for entertaining. The fenced yard offers privacy and a safe space for children and pets. With central air conditioning, you'll be comfortable year-round.

This property combines elegance, functionality, and modern amenities. Schedule a viewing today and experience the luxury of



**Carie Boucher**  
 303-332-3341  
 carieboucher@yahoo.com



Watkins Farm.



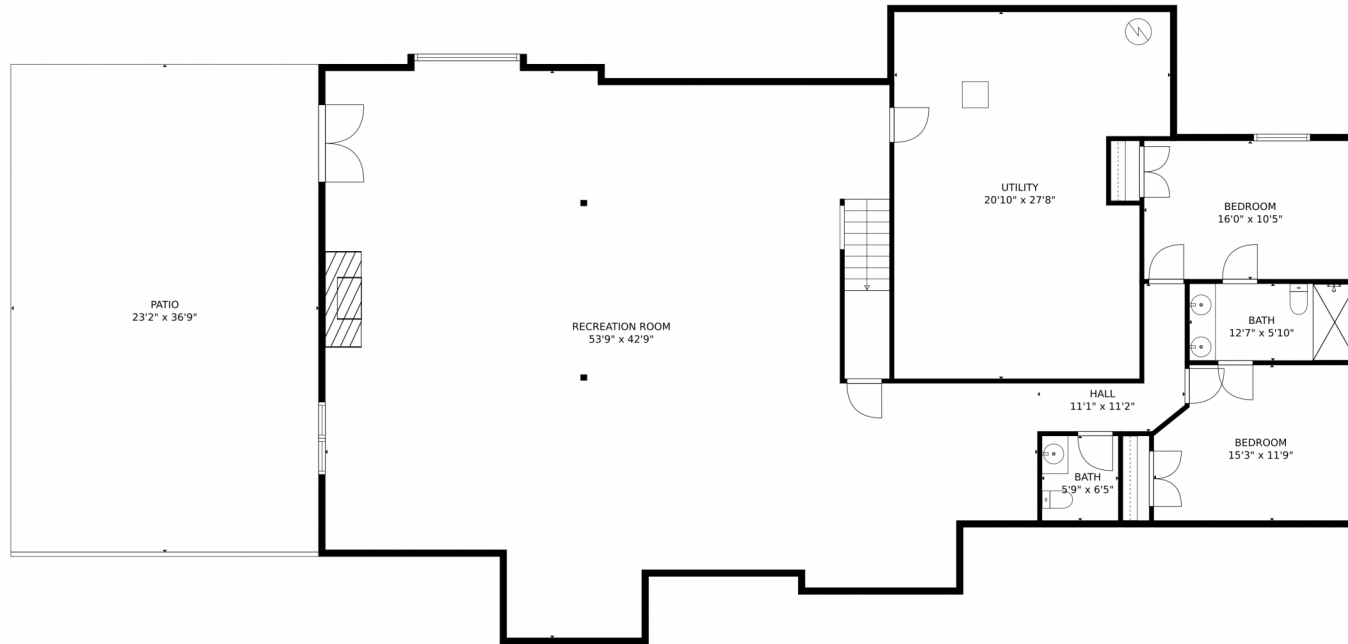
**Carie Boucher**  
303-332-3341  
carieboucher@yahoo.com



Scan code  
for more  
property  
details



# 34511 East 10th Drive, Watkins, CO 80137 – Lower Level



**TOTAL: 5320 sq. ft**  
Below Ground: 2339 sq. ft, FLOOR 2: 2981 sq. ft  
EXCLUDED AREAS: UTILITY: 521 sq. ft, PATIO: 854 sq. ft, EMBEDDED WINDOW: 7 sq. ft,  
GARAGE: 1202 sq. ft, PORCH: 640 sq. ft, DECK: 331 sq. ft

MEASUREMENTS CALCULATED BY V1Photos.com ARE DEEMED HIGHLY RELIABLE BUT NOT GUARANTEED.



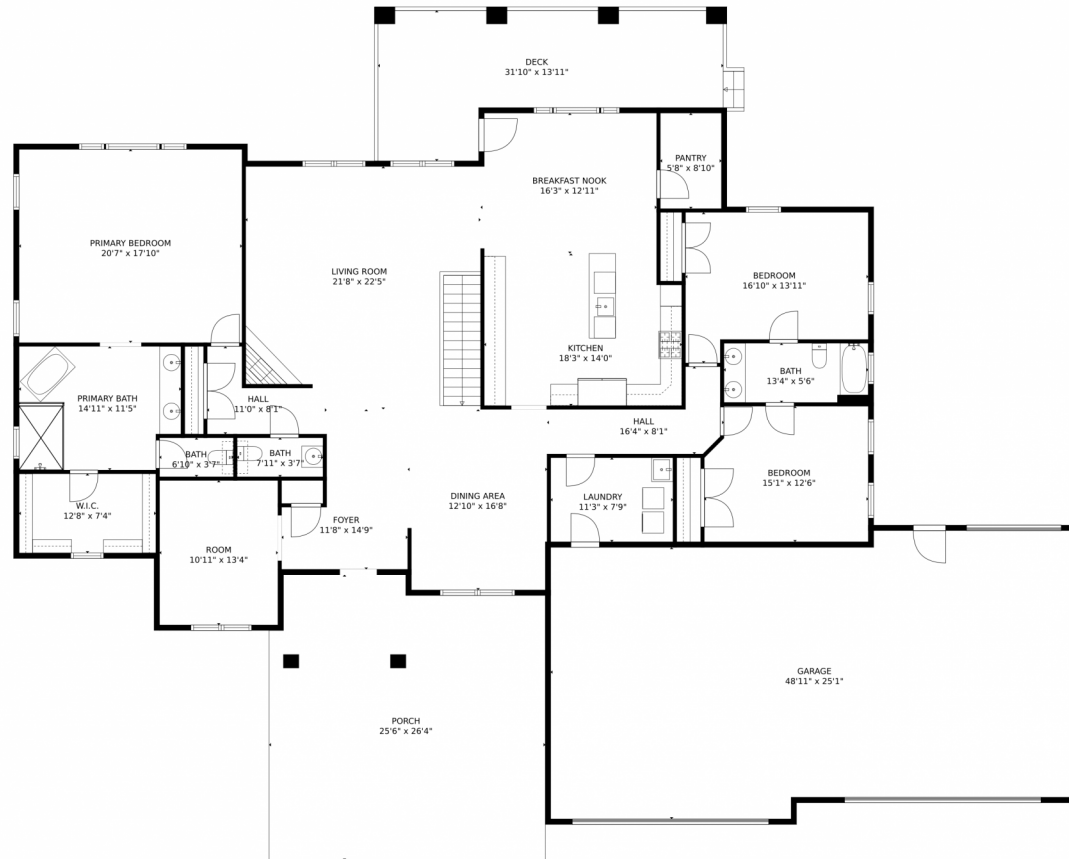
Disclaimer: Sizes and Dimensions are Approximate, Actual May Vary.



**Carie Boucher**  
303-332-3341  
carieboucher@yahoo.com



# 34511 East 10th Drive, Watkins, CO 80137 – Main Level



**TOTAL: 5320 sq. ft**  
Below Ground: 2339 sq. ft, FLOOR 2: 2981 sq. ft  
EXCLUDED AREAS: UTILITY: 521 sq. ft, PATIO: 854 sq. ft, EMBEDDED WINDOW: 7 sq. ft,  
GARAGE: 1202 sq. ft, PORCH: 640 sq. ft, DECK: 331 sq. ft

MEASUREMENTS CALCULATED BY V1Photos.com ARE DEEMED HIGHLY RELIABLE BUT NOT GUARANTEED.



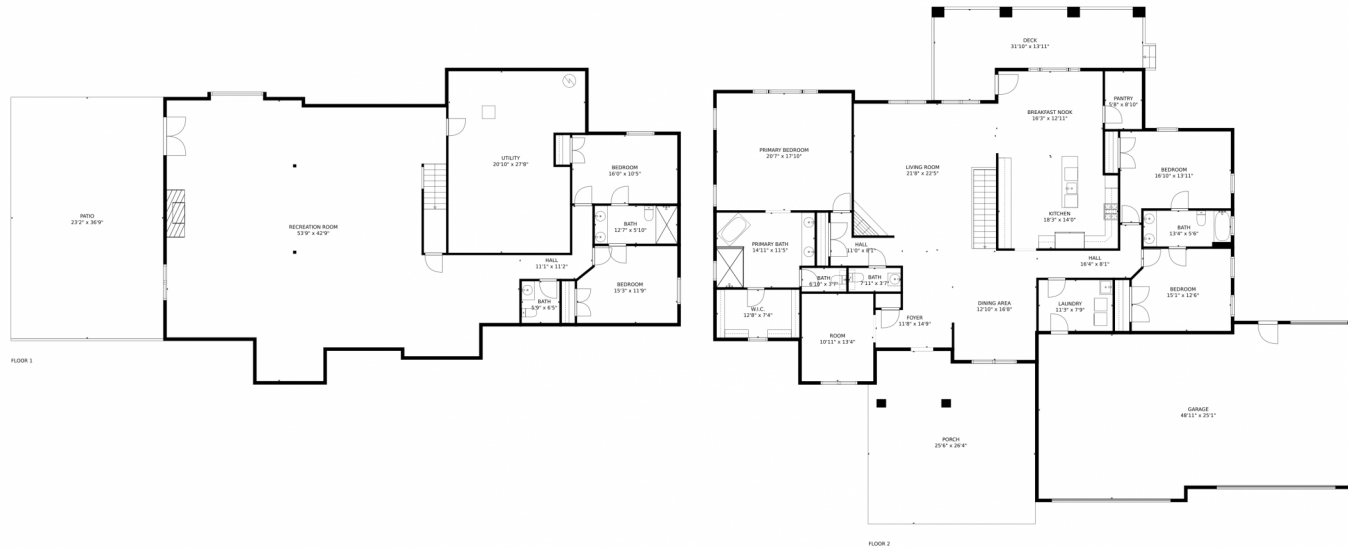
Disclaimer: Sizes and Dimensions are Approximate, Actual May Vary.



**Carie Boucher**  
303-332-3341  
carieboucher@yahoo.com



# 34511 East 10th Drive, Watkins, CO 80137 – All Levels



**TOTAL: 5320 sq. ft**  
Below Ground: 2339 sq. ft, FLOOR 2: 2981 sq. ft  
EXCLUDED AREAS: UTILITY: 521 sq. ft, PATIO: 854 sq. ft, EMBEDDED WINDOW: 7 sq. ft,  
GARAGE: 1202 sq. ft, PORCH: 640 sq. ft, DECK: 331 sq. ft

MEASUREMENTS CALCULATED BY V1Photos.com ARE DEEMED HIGHLY RELIABLE BUT NOT GUARANTEED.



Disclaimer: Sizes and Dimensions are Approximate, Actual May Vary.



**Carie Boucher**  
303-332-3341  
carieboucher@yahoo.com

