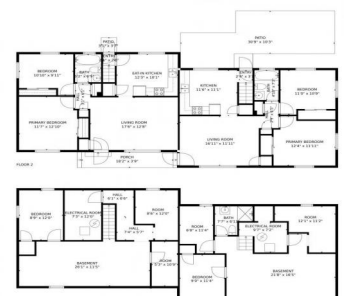




788 South Kearney Street  
 Denver, CO 80224  
 COMMUNITY: Virginia Village/Capitol



788 South Kearney Street, Denver, CO 80224 - All Levels



Multi Family    2880 SQFT    6 Beds    3 Baths    0.15 Acre

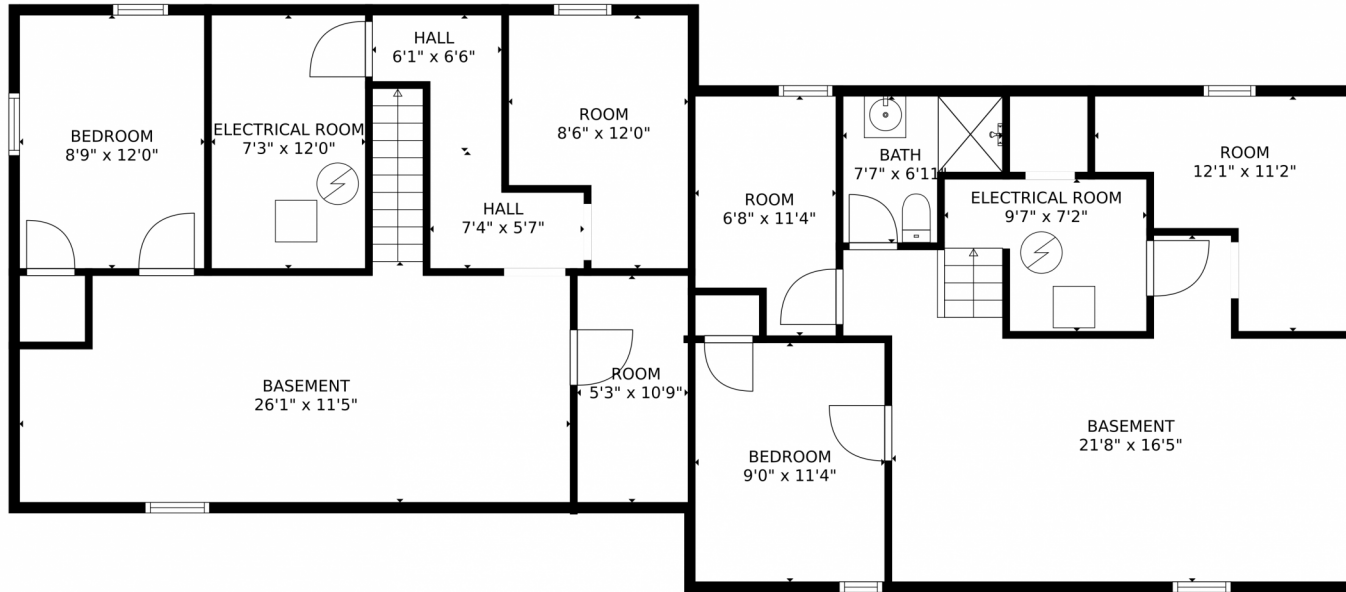


**Carl Dire**  
 720-260-9979  
 direllsdenver@yahoo.com

Scan code for more property details



# 788 South Kearney Street, Denver, CO 80224 – Lower Level



**TOTAL: 2360 sq. ft**  
Below Ground: 909 sq. ft, FLOOR 2: 1451 sq. ft  
EXCLUDED AREAS: ROOM: 318 sq. ft, ELECTRICAL ROOM: 147 sq. ft, UNDEFINED: 13 sq. ft,  
HALL: 63 sq. ft, PORCH: 71 sq. ft, PATIO: 319 sq. ft  
MEASUREMENTS CALCULATED BY V1Photos.com ARE DEEMED HIGHLY RELIABLE BUT NOT GUARANTEED.



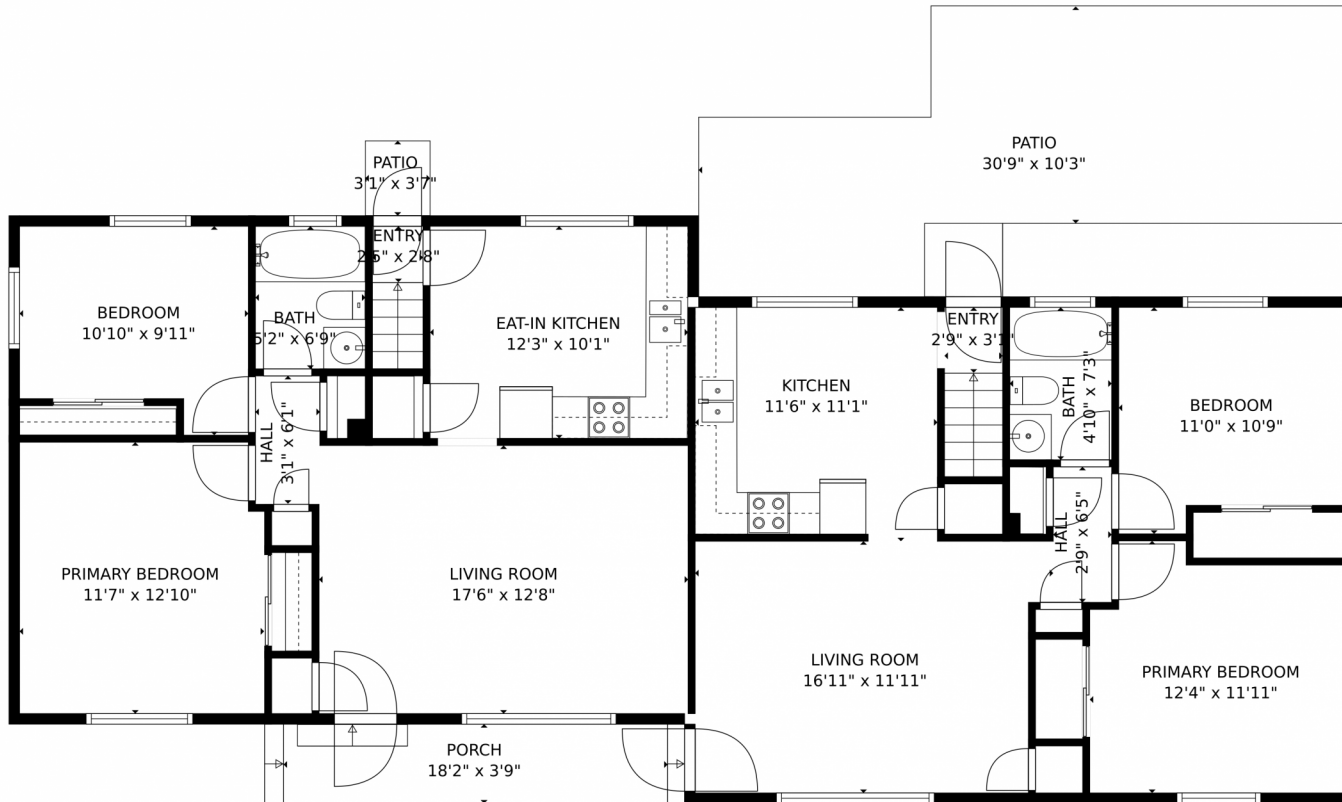
Disclaimer: Sizes and Dimensions are Approximate, Actual May Vary.



**Carl Dire**  
720-260-9979  
diresellsdenver@yahoo.com



# 788 South Kearney Street, Denver, CO 80224 – Main Level



**TOTAL: 2360 sq. ft**  
Below Ground: 909 sq. ft, FLOOR 2: 1451 sq. ft  
EXCLUDED AREAS: ROOM: 318 sq. ft, ELECTRICAL ROOM: 147 sq. ft, UNDEFINED: 13 sq. ft,  
HALL: 63 sq. ft, PORCH: 71 sq. ft, PATIO: 319 sq. ft  
MEASUREMENTS CALCULATED BY V1Photos.com ARE DEEMED HIGHLY RELIABLE BUT NOT GUARANTEED.



Disclaimer: Sizes and Dimensions are Approximate, Actual May Vary.



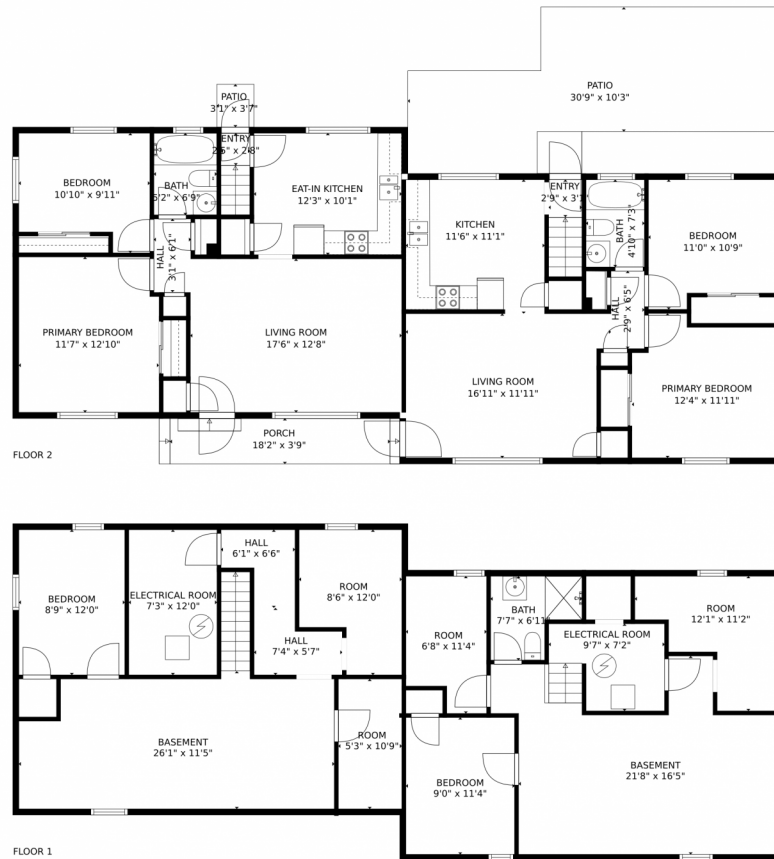
**Carl Dire**  
720-260-9979  
diresellsdenver@yahoo.com



Scan code  
for more  
property  
details



# 788 South Kearney Street, Denver, CO 80224 – All Levels



**TOTAL: 2360 sq. ft**  
Below Ground: 909 sq. ft, FLOOR 2: 1451 sq. ft  
EXCLUDED AREAS: ROOM: 318 sq. ft, ELECTRICAL ROOM: 147 sq. ft, UNDEFINED: 13 sq. ft,  
HALL: 63 sq. ft, PORCH: 71 sq. ft, PATIO: 319 sq. ft

MEASUREMENTS CALCULATED BY V1Photos.com ARE DEEMED HIGHLY RELIABLE BUT NOT GUARANTEED.



Disclaimer: Sizes and Dimensions are Approximate, Actual May Vary.



**Carl Dire**  
720-260-9979  
diresellsdenver@yahoo.com

