





5025 Slickrock Drive
 Colorado Springs, CO 80923
 COMMUNITY: Sundown

MLS # 4624890
 PRICE \$455,000



-  Single Family
-  1738 SQFT
-  3 Beds
-  2 Baths
-  2 Car
-  0.1 Acre

PROPERTY DETAILS

Welcome to this beautiful updated 3-bedroom, 2-bathroom home that effortlessly blends modern conveniences with classic charm. The heart of this home is its stunning remodeled kitchen, featuring an open concept design that flows seamlessly from the family room to the kitchen into the living spaces. The new windows makes this home feel light and bright. Both bathrooms are updated to offer comfort and elegance



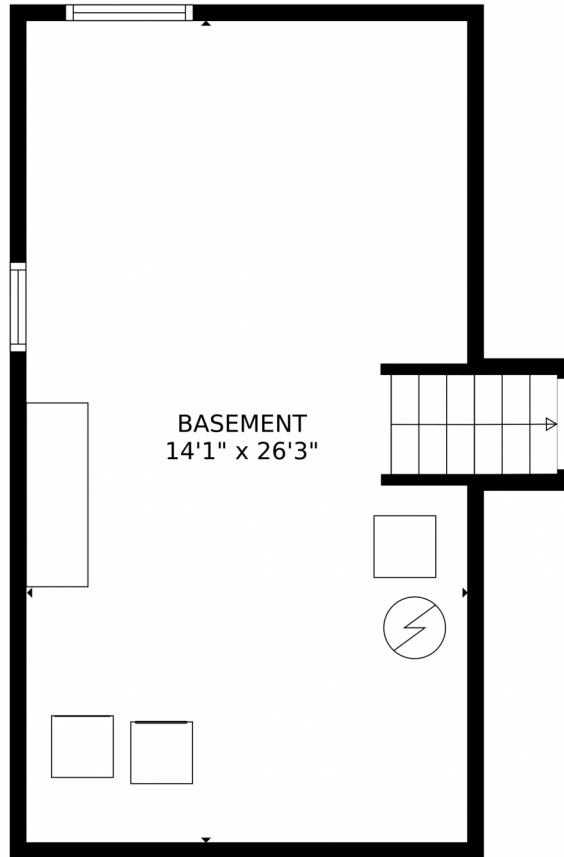
Amy J Garcia
 719-216-8224
 ajgarciaarea@gmail.com

Scan code for more property details





5025 Slickrock Drive, Colorado Springs, CO 80923 – Lower Level



TOTAL: 1317 sq. ft
Below Ground: 0 sq. ft, FLOOR 2: 747 sq. ft, FLOOR 3: 570 sq. ft
EXCLUDED AREAS: BASEMENT: 379 sq. ft, GARAGE: 357 sq. ft, PORCH: 21 sq. ft,
PATIO: 91 sq. ft, FIREPLACE: 4 sq. ft
MEASUREMENTS CALCULATED BY V1Photos.com ARE DEEMED HIGHLY RELIABLE BUT NOT GUARANTEED.



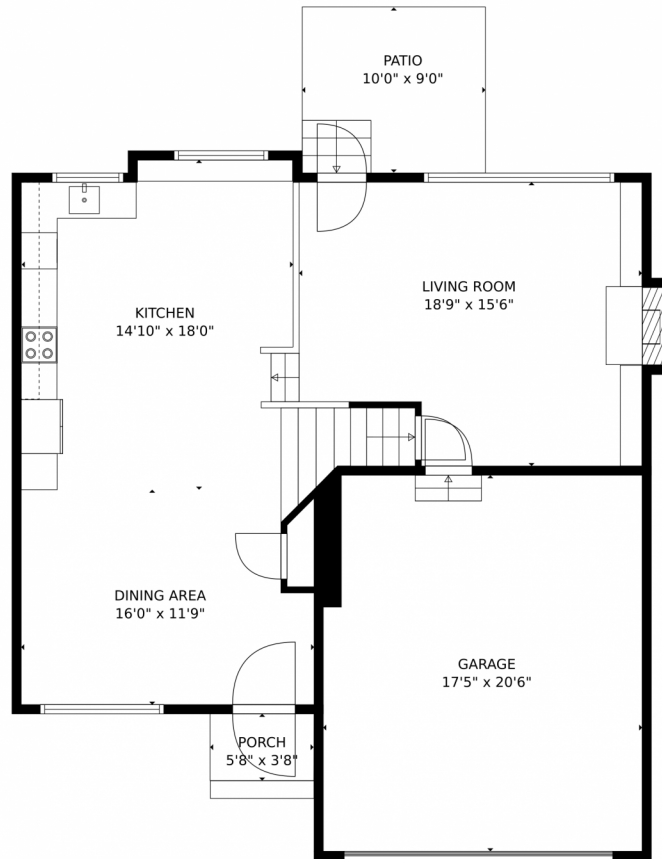
Disclaimer: Sizes and Dimensions are Approximate, Actual May Vary.



Amy J Garcia
719-216-8224
ajgarciaarea@gmail.com



5025 Slickrock Drive, Colorado Springs, CO 80923 – Main Level



TOTAL: 1317 sq. ft
Below Ground: 0 sq. ft, FLOOR 2: 747 sq. ft, FLOOR 3: 570 sq. ft
EXCLUDED AREAS: BASEMENT: 379 sq. ft, GARAGE: 357 sq. ft, PORCH: 21 sq. ft,
PATIO: 91 sq. ft, FIREPLACE: 4 sq. ft

MEASUREMENTS CALCULATED BY V1Photos.com ARE DEEMED HIGHLY RELIABLE BUT NOT GUARANTEED.



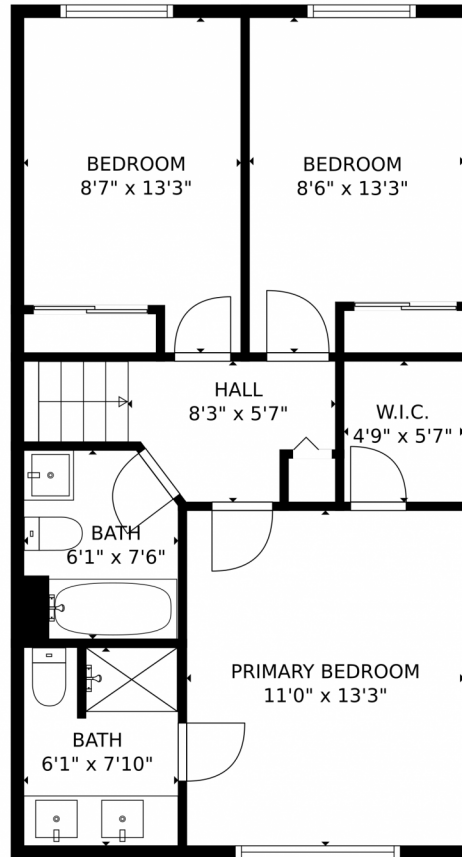
Disclaimer: Sizes and Dimensions are Approximate, Actual May Vary.



Amy J Garcia
719-216-8224
ajgarciaarea@gmail.com



5025 Slickrock Drive, Colorado Springs, CO 80923 – Upper Level



TOTAL: 1317 sq. ft
Below Ground: 0 sq. ft, FLOOR 2: 747 sq. ft, FLOOR 3: 570 sq. ft
EXCLUDED AREAS: BASEMENT: 379 sq. ft, GARAGE: 357 sq. ft, PORCH: 21 sq. ft,
PATIO: 91 sq. ft, FIREPLACE: 4 sq. ft
MEASUREMENTS CALCULATED BY V1Photos.com ARE DEEMED HIGHLY RELIABLE BUT NOT GUARANTEED.



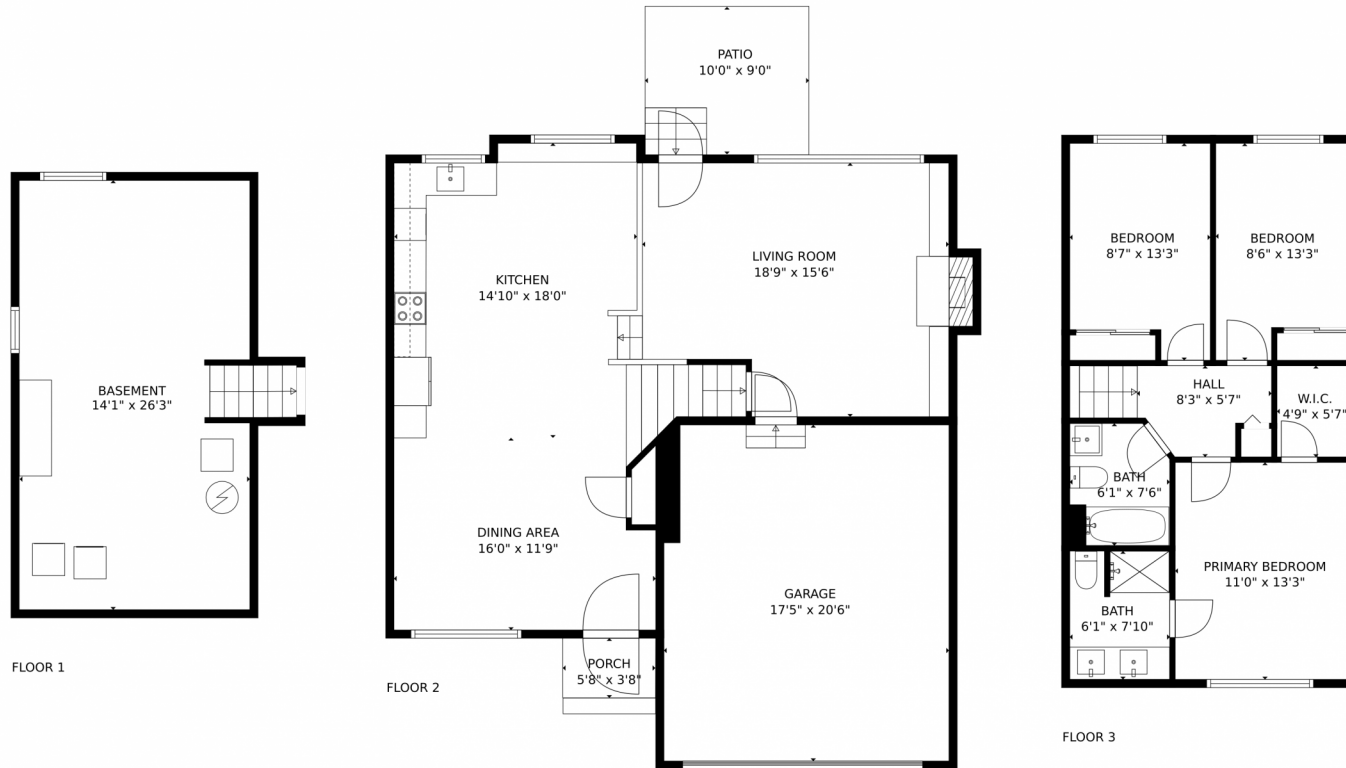
Disclaimer: Sizes and Dimensions are Approximate, Actual May Vary.



Amy J Garcia
719-216-8224
ajgarciaarea@gmail.com



5025 Slickrock Drive, Colorado Springs, CO 80923 – All Levels



TOTAL: 1317 sq. ft
Below Ground: 0 sq. ft, FLOOR 2: 747 sq. ft, FLOOR 3: 570 sq. ft
EXCLUDED AREAS: BASEMENT: 379 sq. ft, GARAGE: 357 sq. ft, PORCH: 21 sq. ft,
PATIO: 91 sq. ft, FIREPLACE: 4 sq. ft
MEASUREMENTS CALCULATED BY V1Photos.COM ARE DEEMED HIGHLY RELIABLE BUT NOT GUARANTEED.



Disclaimer: Sizes and Dimensions are Approximate, Actual May Vary.



Amy J Garcia
719-216-8224
ajgarciaarea@gmail.com

