



Single Family



2744 SQFT



3 Beds



2/1 Baths



3 Car



10.63 Acre

PROPERTY DETAILS

Elevate yourself with magnificent mountain views at 8600 ft! Experience cooler temps, quality air, rainbows, and sunrises. Just 20 minutes from Golden. Close to Golden Gate State Park for outdoor activities. Live in a peaceful mountain home on 10.63 acres. Zoned for agriculture. Custom built in 1971 with 3 bedrooms, 2.5 baths, and a remodeled kitchen. Cozy up by the fireplaces in winter. Partially finished basement with plenty of storage. Animal barn, shed, and three-car garage. No lawn to water or mow. Secluded yet close to a well-maintained highway. Choice of schools. No HOA. Don't miss this rare opportunity for optimal mountain living!



Pandora & John Erlandson

303-888-6298

pandora@pandorajohnproperties.com

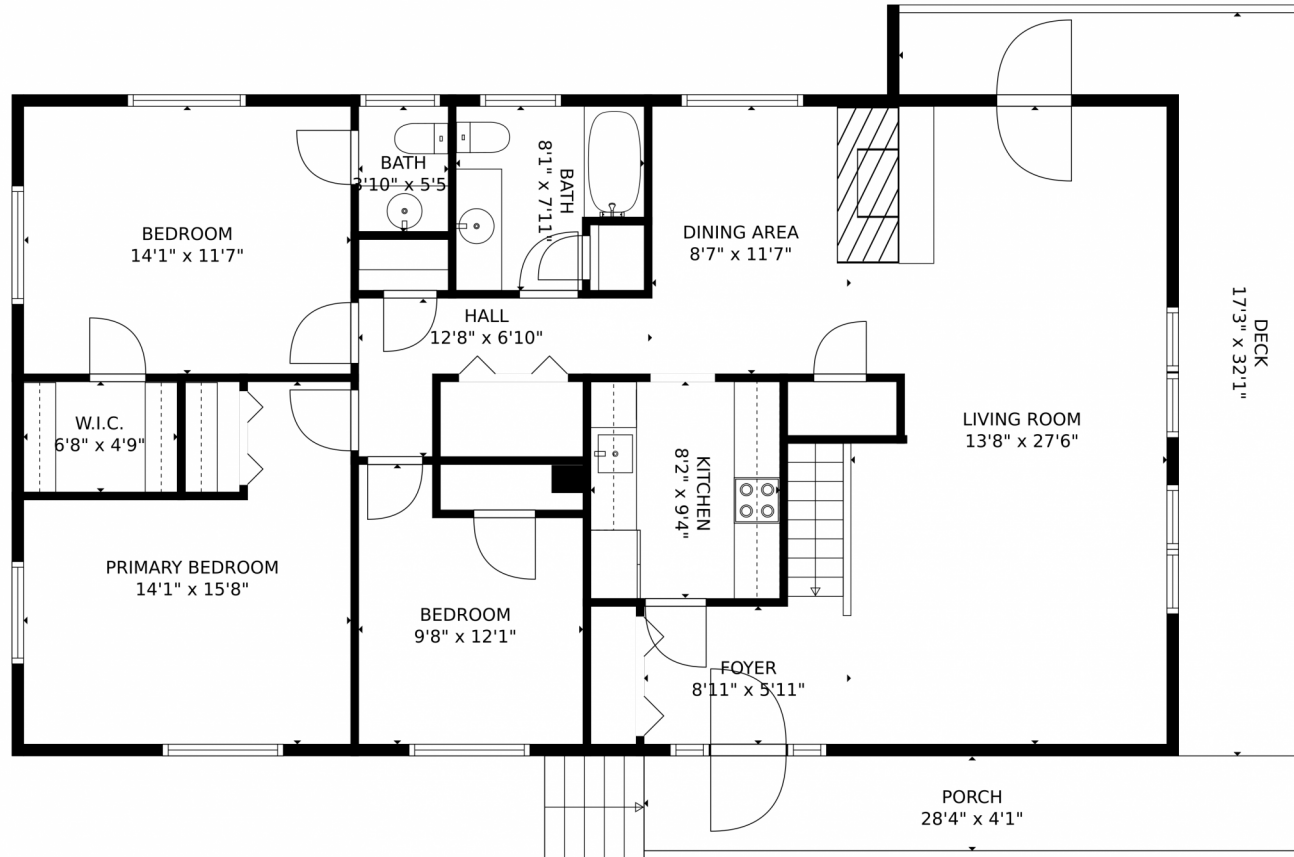
<https://www.pandorajohnproperties.com>



Scan code
for more
property
details



34031 Golden Gate Canyon Road, Golden, CO 80403 – Main Level



TOTAL: 2186 sq. ft
Below Ground: 827 sq. ft, FLOOR 2: 1359 sq. ft
EXCLUDED AREAS: LAUNDRY: 120 sq. ft, BASEMENT: 368 sq. ft, GARAGE: 1065 sq. ft,
PATIO: 84 sq. ft, DECK: 211 sq. ft, PORCH: 116 sq. ft
MEASUREMENTS CALCULATED BY V1Photos.com ARE DEEMED HIGHLY RELIABLE BUT NOT GUARANTEED.



Disclaimer: Sizes and Dimensions are Approximate, Actual May Vary.



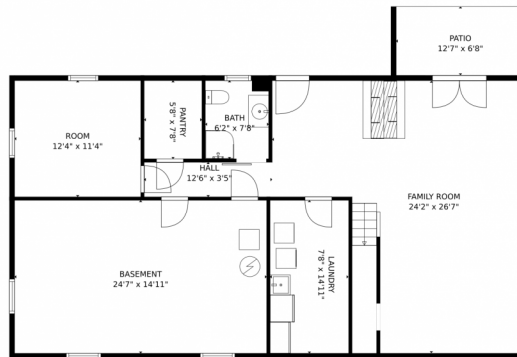
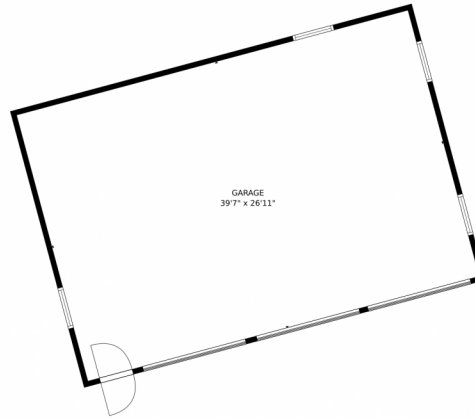
Pandora & John Erlandson
303-888-6298
pandora@pandorajohnproperties.com
<https://www.pandorajohnproperties.com>



Scan code
for more
property
details



34031 Golden Gate Canyon Road, Golden, CO 80403 – Lower Level



TOTAL: 2186 sq. ft
Below Ground: 827 sq. ft, FLOOR 2: 1359 sq. ft
EXCLUDED AREAS: LAUNDRY: 120 sq. ft, BASEMENT: 368 sq. ft, GARAGE: 1065 sq. ft,
PATIO: 84 sq. ft, DECK: 211 sq. ft, PORCH: 116 sq. ft

MEASUREMENTS CALCULATED BY V1Photos.com ARE DEEMED HIGHLY RELIABLE BUT NOT GUARANTEED.



Disclaimer: Sizes and Dimensions are Approximate, Actual May Vary.



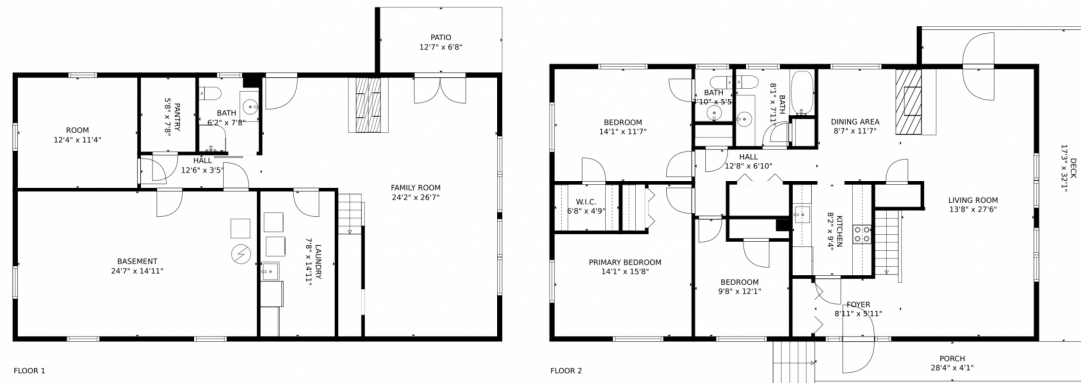
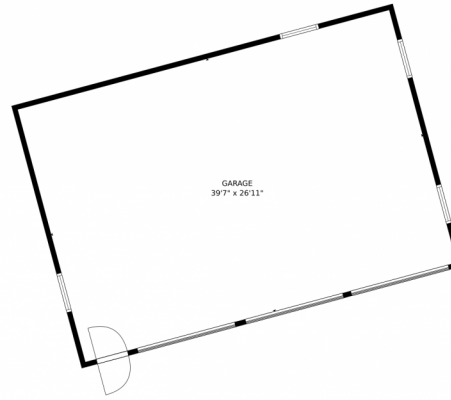
Pandora & John Erlandson
303-888-6298
pandora@pandorajohnproperties.com
<https://www.pandorajohnproperties.com>



Scan code
for more
property
details



34031 Golden Gate Canyon Road, Golden, CO 80403 – All Levels



TOTAL: 2186 sq. ft
Below Ground: 827 sq. ft, FLOOR 2: 1359 sq. ft
EXCLUDED AREAS: LAUNDRY: 120 sq. ft, BASEMENT: 368 sq. ft, GARAGE: 1065 sq. ft,
PATIO: 84 sq. ft, DECK: 211 sq. ft, PORCH: 116 sq. ft

MEASUREMENTS CALCULATED BY V1Photos.COM ARE DEEMED HIGHLY RELIABLE BUT NOT GUARANTEED.



Disclaimer: Sizes and Dimensions are Approximate, Actual May Vary.



Pandora & John Erlandson
303-888-6298
pandora@pandorajohnproperties.com
<https://www.pandorajohnproperties.com>



Scan code
for more
property
details

