




 Single Family

 2168 SQFT

 5 Beds

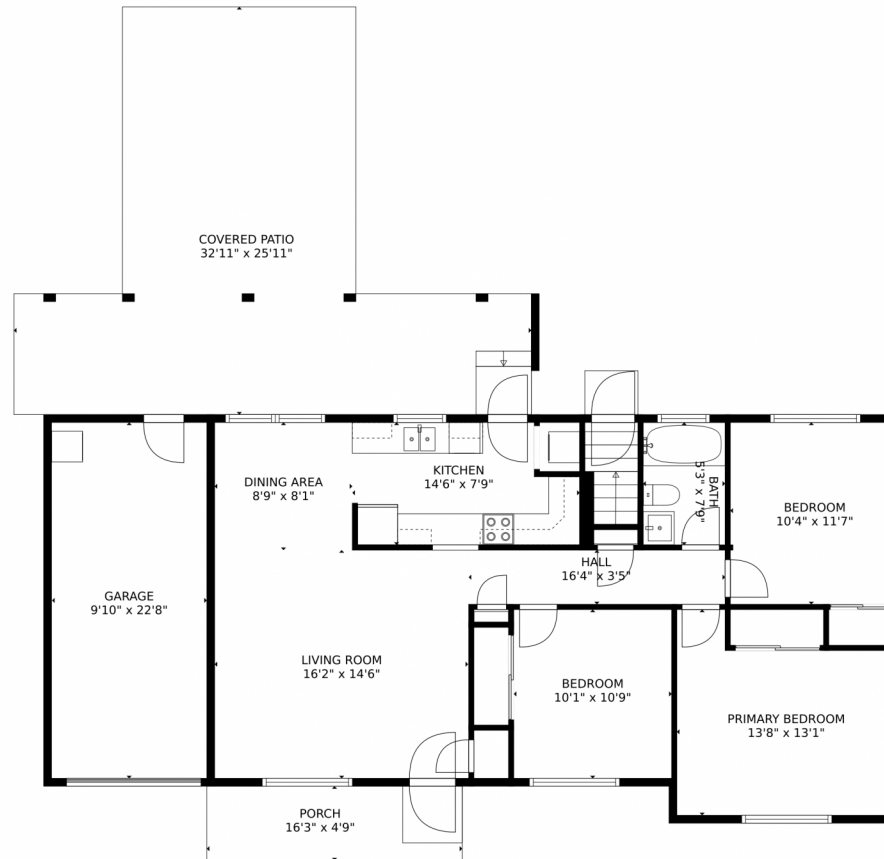
 2 Baths



Taylor Haas
303-665-7368
taylorh@coloradorpm.com
<https://www.coloradorpm.com/available-rental-properties-denver>



7850 Valleyview Drive, Denver, CO 80221 – Main Level



TOTAL: 1881 sq. ft
Below Ground: 873 sq. ft, FLOOR 2: 1008 sq. ft
EXCLUDED AREAS: ELECTRICAL ROOM: 39 sq. ft, GARAGE: 224 sq. ft, COVERED PATIO: 524 sq. ft,
PORCH: 77 sq. ft

MEASUREMENTS CALCULATED BY V1Photos.com ARE DEEMED HIGHLY RELIABLE BUT NOT GUARANTEED.



Disclaimer: Sizes and Dimensions are Approximate, Actual May Vary.



Taylor Haas

303-665-7368

taylorh@coloradorpm.com

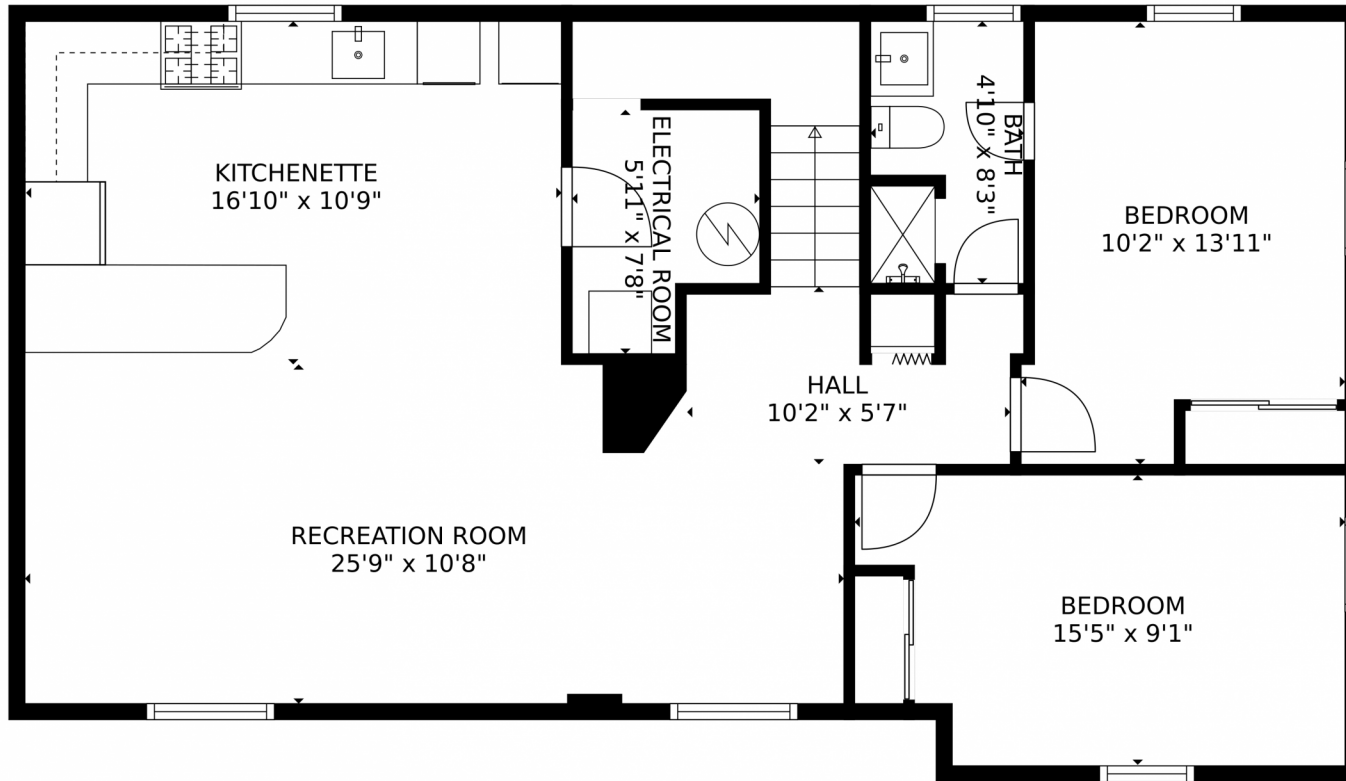
<https://www.coloradorpm.com/available-rental-properties-denver>



Scan code
for more
property
details



7850 Valleyview Drive, Denver, CO 80221 – Lower Level



TOTAL: 1881 sq. ft
Below Ground: 873 sq. ft, FLOOR 2: 1008 sq. ft
EXCLUDED AREAS: ELECTRICAL ROOM: 39 sq. ft, GARAGE: 224 sq. ft, COVERED PATIO: 524 sq. ft,
PORCH: 77 sq. ft

MEASUREMENTS CALCULATED BY V1Photos.com ARE DEEMED HIGHLY RELIABLE BUT NOT GUARANTEED.



Disclaimer: Sizes and Dimensions are Approximate, Actual May Vary.



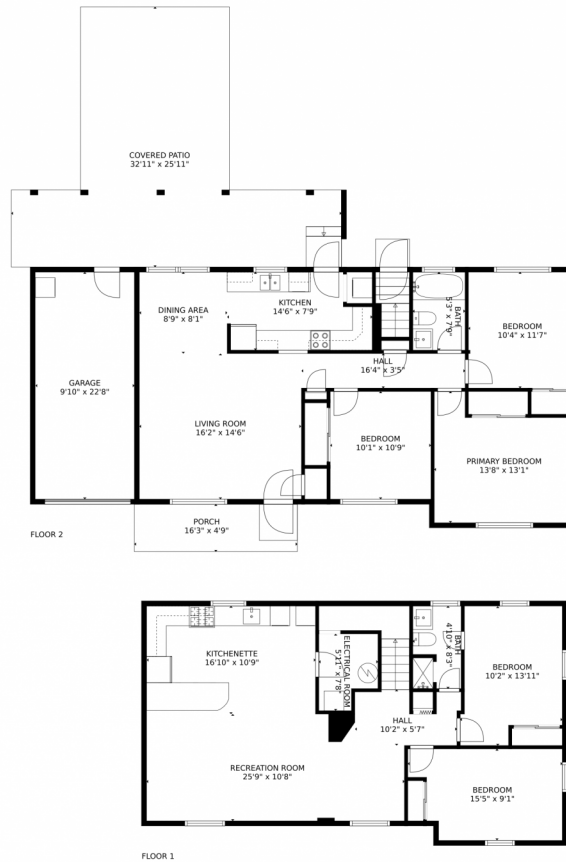
Taylor Haas
303-665-7368
taylorh@coloradorm.com
<https://www.coloradorm.com/available-rental-properties-denver>



Scan code
for more
property
details



7850 Valleyview Drive, Denver, CO 80221 – All Levels



TOTAL: 1881 sq. ft
Below Ground: 873 sq. ft, FLOOR 2: 1008 sq. ft
EXCLUDED AREAS: ELECTRICAL ROOM: 39 sq. ft, GARAGE: 224 sq. ft, COVERED PATIO: 524 sq. ft,
PORCH: 77 sq. ft

MEASUREMENTS CALCULATED BY V1Photos.com ARE DEEMED HIGHLY RELIABLE BUT NOT GUARANTEED.



Disclaimer: Sizes and Dimensions are Approximate, Actual May Vary.



Taylor Haas

303-665-7368

taylorh@coloradorpm.com

<https://www.coloradorpm.com/available-rental-properties-denver>



Scan code
for more
property
details

