

Single Family

1800 SQFT

3 Beds

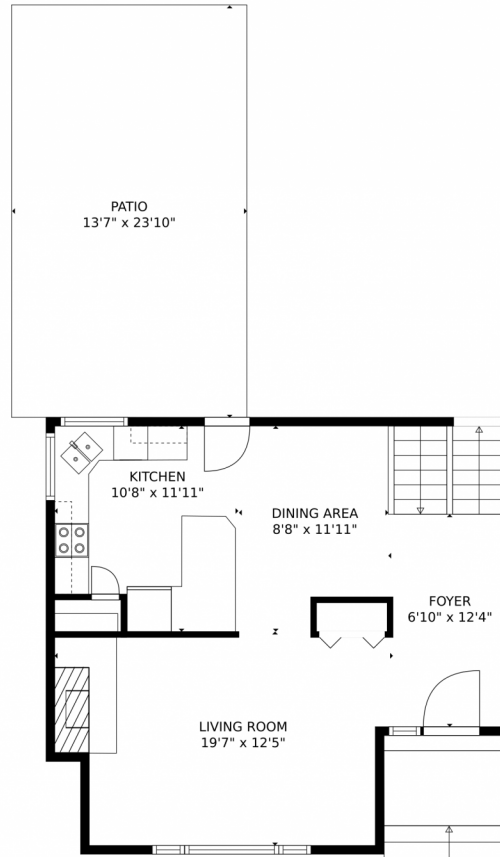
2/1 Baths



Alexis Foster
970-310-6999
alexisfoster@windermere.com



531 West Arrowhead Street, Louisville, CO 80027 – Main Level



TOTAL: 1554 sq. ft
Below Ground: 0 sq. ft, FLOOR 2: 290 sq. ft, FLOOR 3: 572 sq. ft, FLOOR 4: 692 sq. ft
EXCLUDED AREAS: BASEMENT: 536 sq. ft, GARAGE: 358 sq. ft, ELECTRICAL ROOM: 133 sq. ft,
PATIO: 326 sq. ft

MEASUREMENTS CALCULATED BY V1Photos.com ARE DEEMED HIGHLY RELIABLE BUT NOT GUARANTEED.



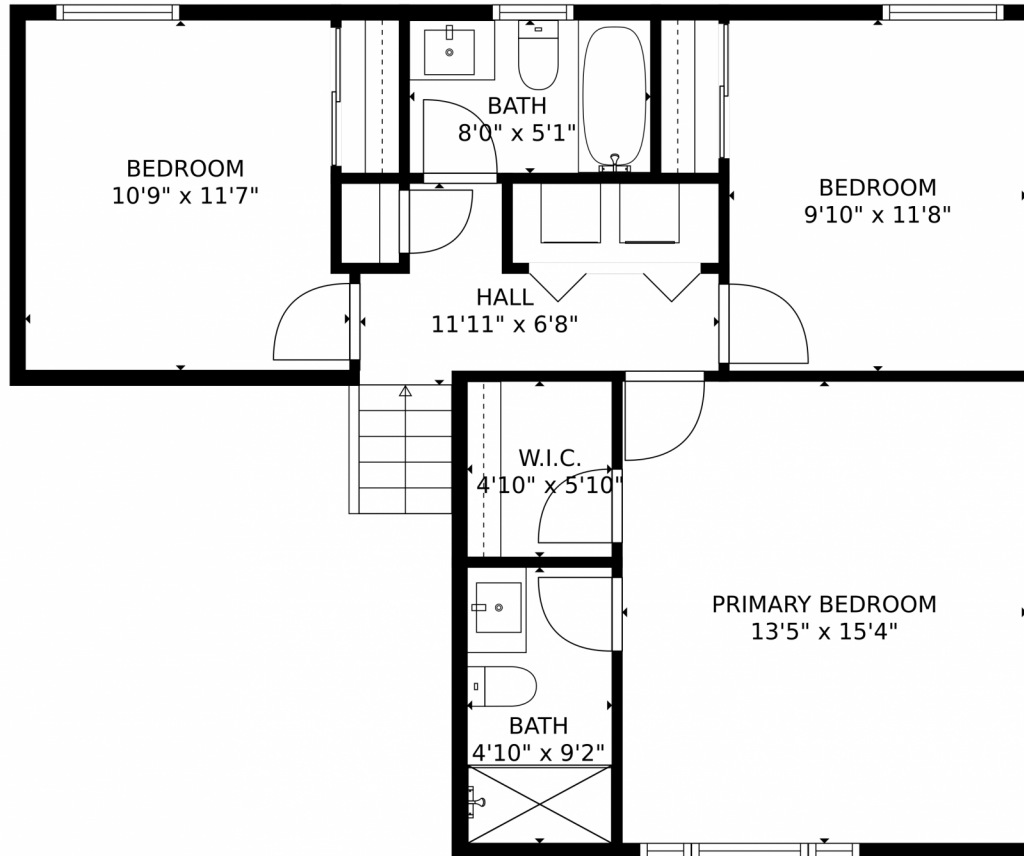
Disclaimer: Sizes and Dimensions are Approximate, Actual May Vary.



Alexis Foster
970-310-6999
alexisfoster@windermere.com



531 West Arrowhead Street, Louisville, CO 80027 – Upper Level



TOTAL: 1554 sq. ft
Below Ground: 0 sq. ft, FLOOR 2: 290 sq. ft, FLOOR 3: 572 sq. ft, FLOOR 4: 692 sq. ft
EXCLUDED AREAS: BASEMENT: 536 sq. ft, GARAGE: 358 sq. ft, ELECTRICAL ROOM: 133 sq. ft,
PATIO: 326 sq. ft

MEASUREMENTS CALCULATED BY V1Photos.com ARE DEEMED HIGHLY RELIABLE BUT NOT GUARANTEED.



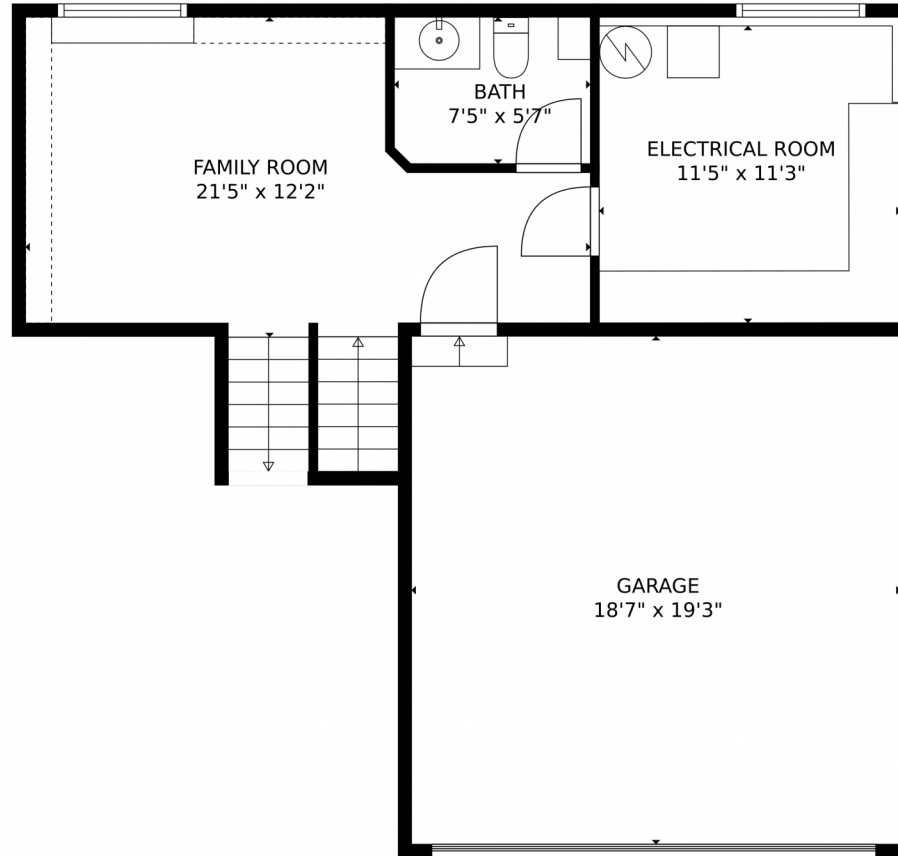
Disclaimer: Sizes and Dimensions are Approximate, Actual May Vary.



Alexis Foster
970-310-6999
alexisfoster@windermere.com



531 West Arrowhead Street, Louisville, CO 80027 – Lower Main Level



TOTAL: 1554 sq. ft
Below Ground: 0 sq. ft, FLOOR 2: 290 sq. ft, FLOOR 3: 572 sq. ft, FLOOR 4: 692 sq. ft
EXCLUDED AREAS: BASEMENT: 536 sq. ft, GARAGE: 358 sq. ft, ELECTRICAL ROOM: 133 sq. ft,
PATIO: 326 sq. ft

MEASUREMENTS CALCULATED BY V1Photos.com ARE DEEMED HIGHLY RELIABLE BUT NOT GUARANTEED.

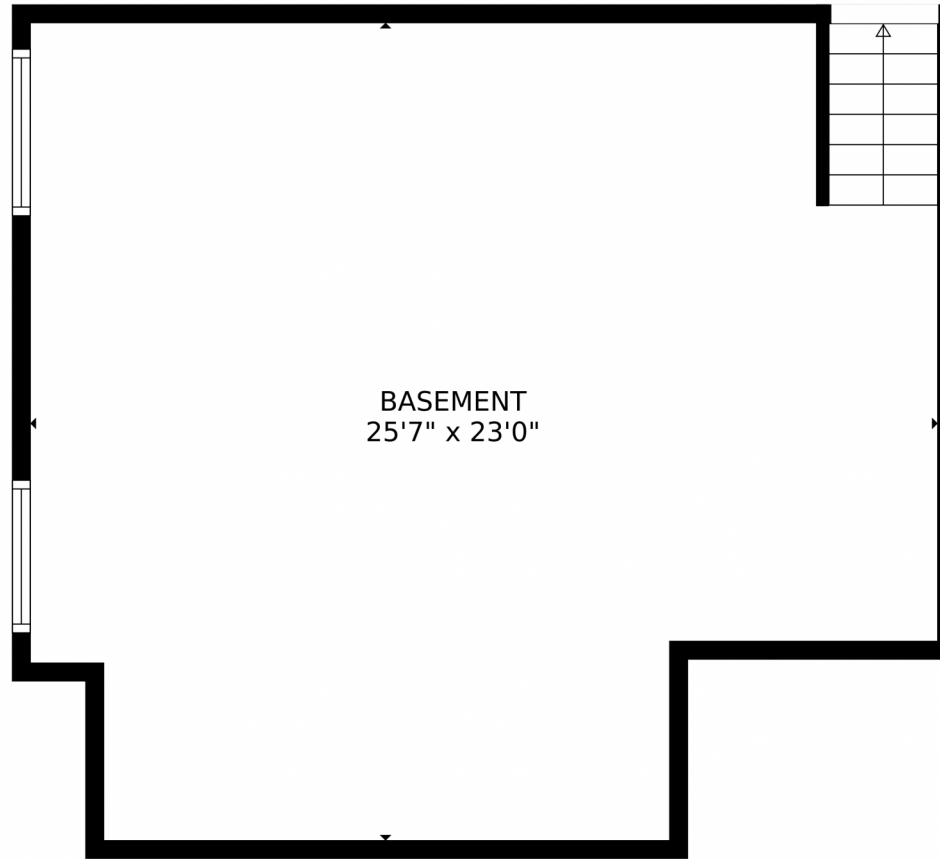


Disclaimer: Sizes and Dimensions are Approximate, Actual May Vary.



Alexis Foster
970-310-6999
alexisfoster@windermere.com





TOTAL: 1554 sq. ft
Below Ground: 0 sq. ft, FLOOR 2: 290 sq. ft, FLOOR 3: 572 sq. ft, FLOOR 4: 692 sq. ft
EXCLUDED AREAS: BASEMENT: 536 sq. ft, GARAGE: 358 sq. ft, ELECTRICAL ROOM: 133 sq. ft,
PATIO: 326 sq. ft

MEASUREMENTS CALCULATED BY V1Photos.com ARE DEEMED HIGHLY RELIABLE BUT NOT GUARANTEED.



Disclaimer: Sizes and Dimensions are Approximate, Actual May Vary.



Alexis Foster
970-310-6999
alexisfoster@windermere.com



531 West Arrowhead Street, Louisville, CO 80027 – All Levels



TOTAL: 1554 sq. ft
Below Ground: 0 sq. ft, FLOOR 2: 290 sq. ft, FLOOR 3: 572 sq. ft, FLOOR 4: 692 sq. ft
EXCLUDED AREAS: BASEMENT: 536 sq. ft, GARAGE: 358 sq. ft, ELECTRICAL ROOM: 133 sq. ft,
PATIO: 326 sq. ft

MEASUREMENTS CALCULATED BY V1Photos.com ARE DEEMED HIGHLY RELIABLE BUT NOT GUARANTEED.



Disclaimer: Sizes and Dimensions are Approximate, Actual May Vary.



Alexis Foster
970-310-6999
alexisfoster@windermere.com

