



Single Family



3200 SQFT



4 Beds



3 Baths



2 Car



0.08 Acre



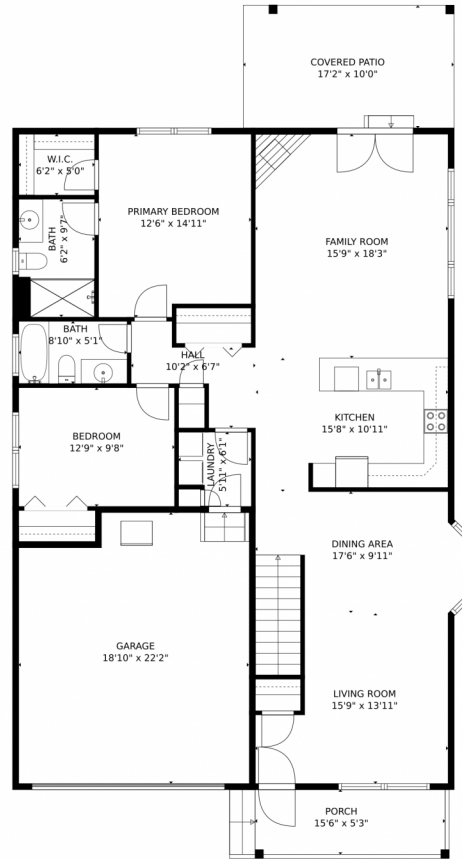
**Brian Franzen**  
970-301-0266  
brian@briansellsnoco.com



Scan code  
for more  
property  
details



# 2047 36th Avenue, Greeley, CO 80634 – Main Level



**TOTAL: 2607 sq. ft**  
Below Ground: 1155 sq. ft, FLOOR 2: 1452 sq. ft  
EXCLUDED AREAS: STORAGE: 169 sq. ft, ELECTRICAL ROOM: 100 sq. ft, GARAGE: 397 sq. ft,  
PORCH: 93 sq. ft, COVERED PATIO: 173 sq. ft

MEASUREMENTS CALCULATED BY V1Photos.com ARE DEEMED HIGHLY RELIABLE BUT NOT GUARANTEED.



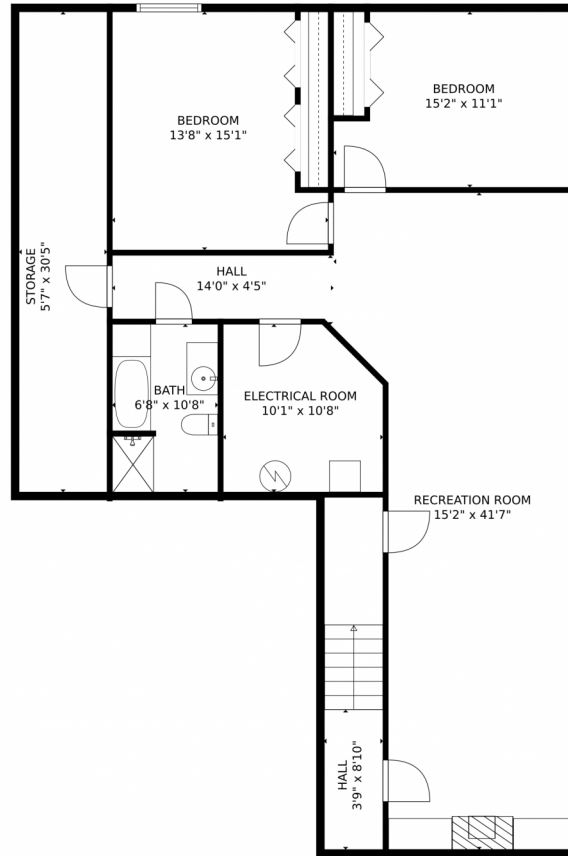
Disclaimer: Sizes and Dimensions are Approximate, Actual May Vary.



**Brian Franzen**  
970-301-0266  
brian@briansellsnoco.com



2047 36th Avenue, Greeley, CO 80634 – Basement



**TOTAL: 2607 sq. ft**  
Below Ground: 1155 sq. ft, FLOOR 2: 1452 sq. ft  
EXCLUDED AREAS: STORAGE: 169 sq. ft, ELECTRICAL ROOM: 100 sq. ft, GARAGE: 397 sq. ft,  
PORCH: 93 sq. ft, COVERED PATIO: 173 sq. ft

MEASUREMENTS CALCULATED BY V1Photos.com ARE DEEMED HIGHLY RELIABLE BUT NOT GUARANTEED.



Disclaimer: Sizes and Dimensions are Approximate, Actual May Vary.



**Brian Franzen**  
970-301-0266  
brian@briansellsnoco.com



# 2047 36th Avenue, Greeley, CO 80634 – All Levels



**TOTAL: 2607 sq. ft**  
Below Ground: 1155 sq. ft, FLOOR 2: 1452 sq. ft  
EXCLUDED AREAS: STORAGE: 169 sq. ft, ELECTRICAL ROOM: 100 sq. ft, GARAGE: 397 sq. ft,  
PORCH: 93 sq. ft, COVERED PATIO: 173 sq. ft

MEASUREMENTS CALCULATED BY V1Photos.com ARE DEEMED HIGHLY RELIABLE BUT NOT GUARANTEED.



Disclaimer: Sizes and Dimensions are Approximate, Actual May Vary.



**Brian Franzen**  
970-301-0266  
brian@briansellsnoco.com

