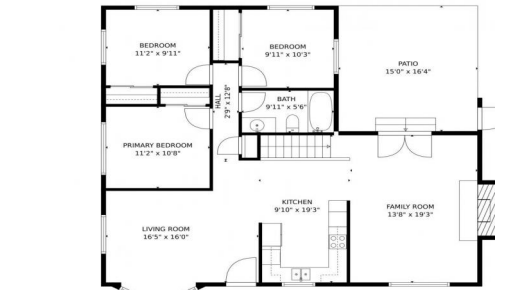




483 Leonard Lane, Northglenn, CO 80233 - floorplan\_single\_1



Single Family



2235 SQFT



4 Beds



2/2 Baths



2 Car



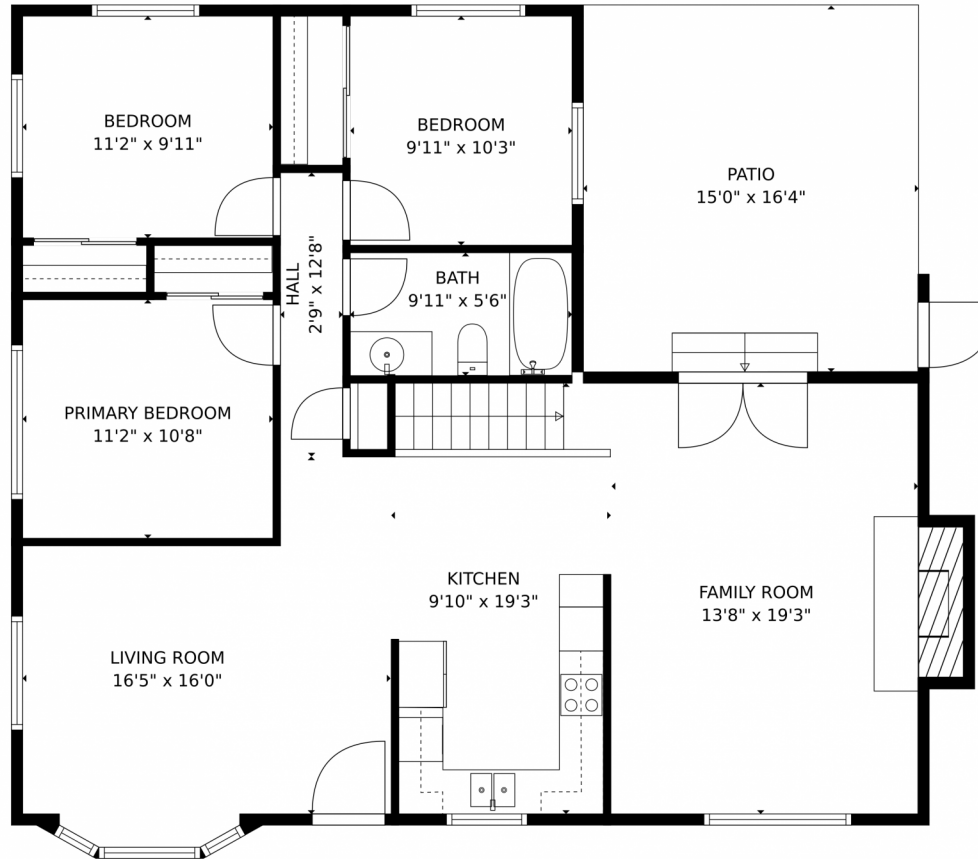
0.16 Acre



**Jason Cassidy**  
 720-220-6964  
 jason@coloradorpm.com



483 Leonard Lane, Northglenn, CO 80233 – main level



**TOTAL: 1918 sq. ft**  
Below Ground: 741 sq. ft, FLOOR 2: 1177 sq. ft  
EXCLUDED AREAS: ROOM: 235 sq. ft, UTILITY: 158 sq. ft, UNDEFINED: 17 sq. ft,  
PATIO: 245 sq. ft, EMBEDDEDWINDOW: 11 sq. ft, FIREPLACE: 16 sq. ft  
MEASUREMENTS CALCULATED BY V1Photos.com ARE DEEMED HIGHLY RELIABLE BUT NOT GUARANTEED.



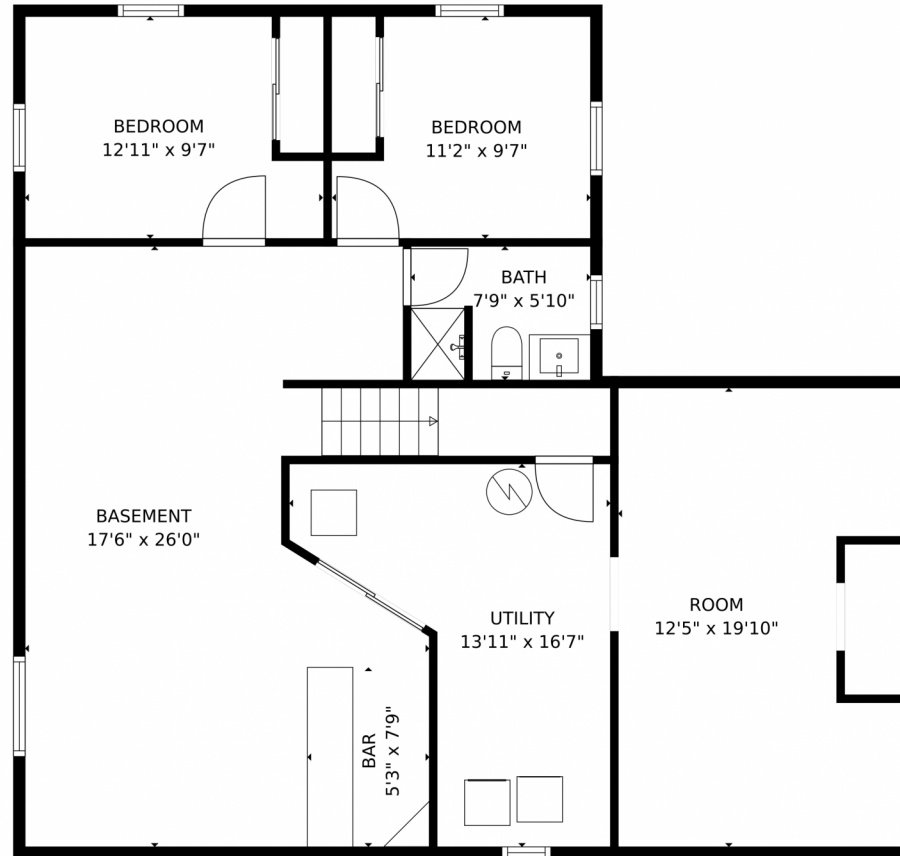
Disclaimer: Sizes and Dimensions are Approximate, Actual May Vary.



**Jason Cassidy**  
720-220-6964  
jason@coloradorpm.com



483 Leonard Lane, Northglenn, CO 80233 – lower level



**TOTAL: 1918 sq. ft**  
Below Ground: 741 sq. ft, FLOOR 2: 1177 sq. ft  
EXCLUDED AREAS: ROOM: 235 sq. ft, UTILITY: 158 sq. ft, UNDEFINED: 17 sq. ft,  
PATIO: 245 sq. ft, EMBEDDEDWINDOW: 11 sq. ft, FIREPLACE: 16 sq. ft  
MEASUREMENTS CALCULATED BY V1Photos.com ARE DEEMED HIGHLY RELIABLE BUT NOT GUARANTEED.



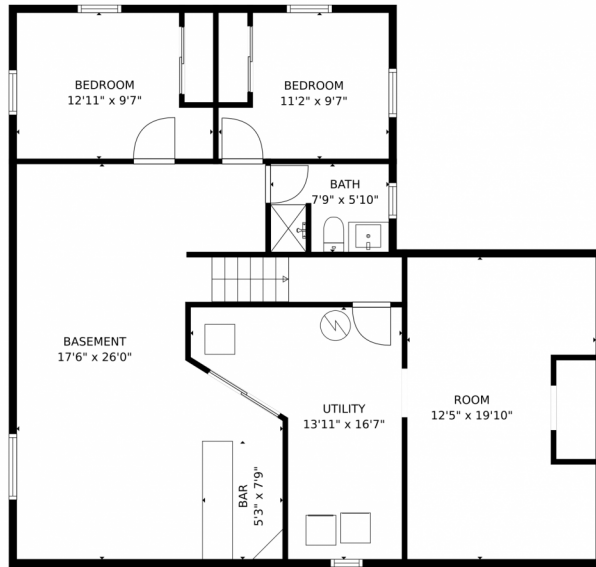
Disclaimer: Sizes and Dimensions are Approximate, Actual May Vary.



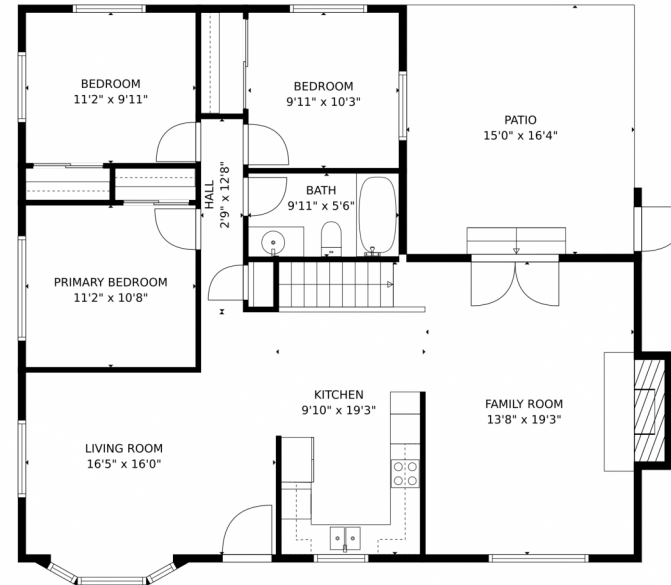
**Jason Cassidy**  
720-220-6964  
jason@coloradorpm.com



# 483 Leonard Lane, Northglenn, CO 80233 – all levels



FLOOR 1



FLOOR 2

**TOTAL: 1918 sq. ft**  
Below Ground: 741 sq. ft, FLOOR 2: 1177 sq. ft  
EXCLUDED AREAS: ROOM: 235 sq. ft, UTILITY: 158 sq. ft, UNDEFINED: 17 sq. ft,  
PATIO: 245 sq. ft, EMBEDDEDWINDOW: 11 sq. ft, FIREPLACE: 16 sq. ft  
MEASUREMENTS CALCULATED BY V1Photos.com ARE DEEMED HIGHLY RELIABLE BUT NOT GUARANTEED.



Disclaimer: Sizes and Dimensions are Approximate, Actual May Vary.



Jason Cassidy  
720-220-6964  
jason@coloradorpm.com



Scan code  
for more  
property  
details