


9416 McShane Court  
Parker, CO 80134  
COMMUNITY: The Pinery



 Single Family

 3000 SQFT

 4 Beds

 3 Baths



**Nick Shamburg**  
720-469-0007  
nick@spencerrealtyllc.com



# 9416 McShane Court, Parker, CO 80134 – Main Level



**TOTAL: 2970 sq. ft**  
Below Ground: 1481 sq. ft, FLOOR 2: 1489 sq. ft  
EXCLUDED AREAS: GARAGE: 358 sq. ft, PORCH: 51 sq. ft, DECK: 564 sq. ft  
MEASUREMENTS CALCULATED BY V1Photos.com ARE DEEMED HIGHLY RELIABLE BUT NOT GUARANTEED.



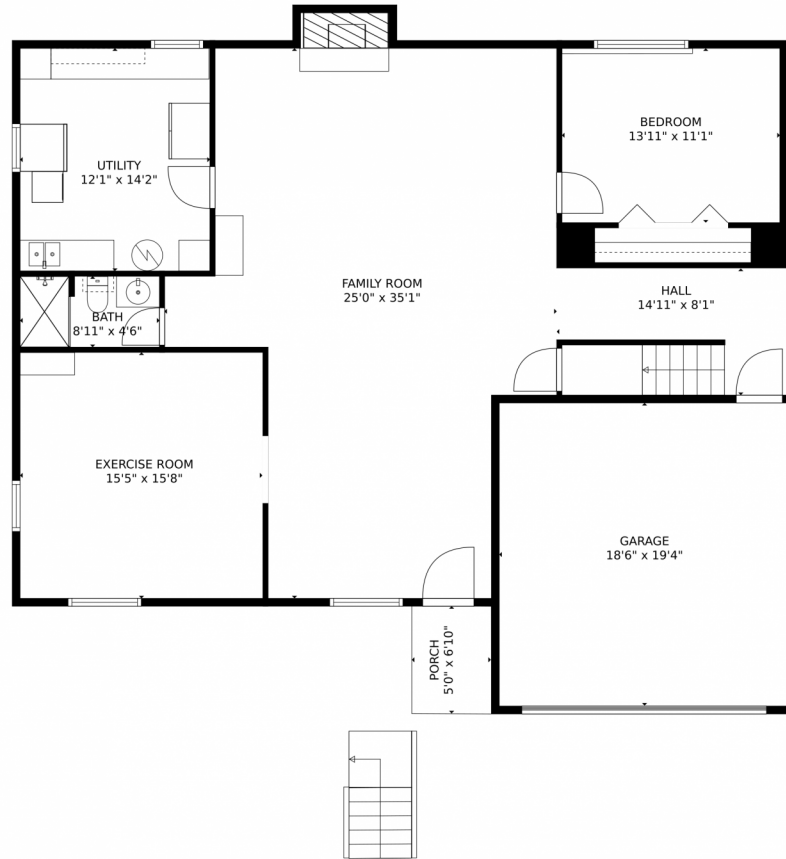
Disclaimer: Sizes and Dimensions are Approximate, Actual May Vary.



**Nick Shamburg**  
720-469-0007  
nick@spencerrealtyllc.com



# 9416 McShane Court, Parker, CO 80134 – Lower Level



**TOTAL: 2970 sq. ft**  
Below Ground: 1481 sq. ft, FLOOR 2: 1489 sq. ft  
EXCLUDED AREAS: GARAGE: 358 sq. ft, PORCH: 51 sq. ft, DECK: 564 sq. ft  
MEASUREMENTS CALCULATED BY V1Photos.com ARE DEEMED HIGHLY RELIABLE BUT NOT GUARANTEED.



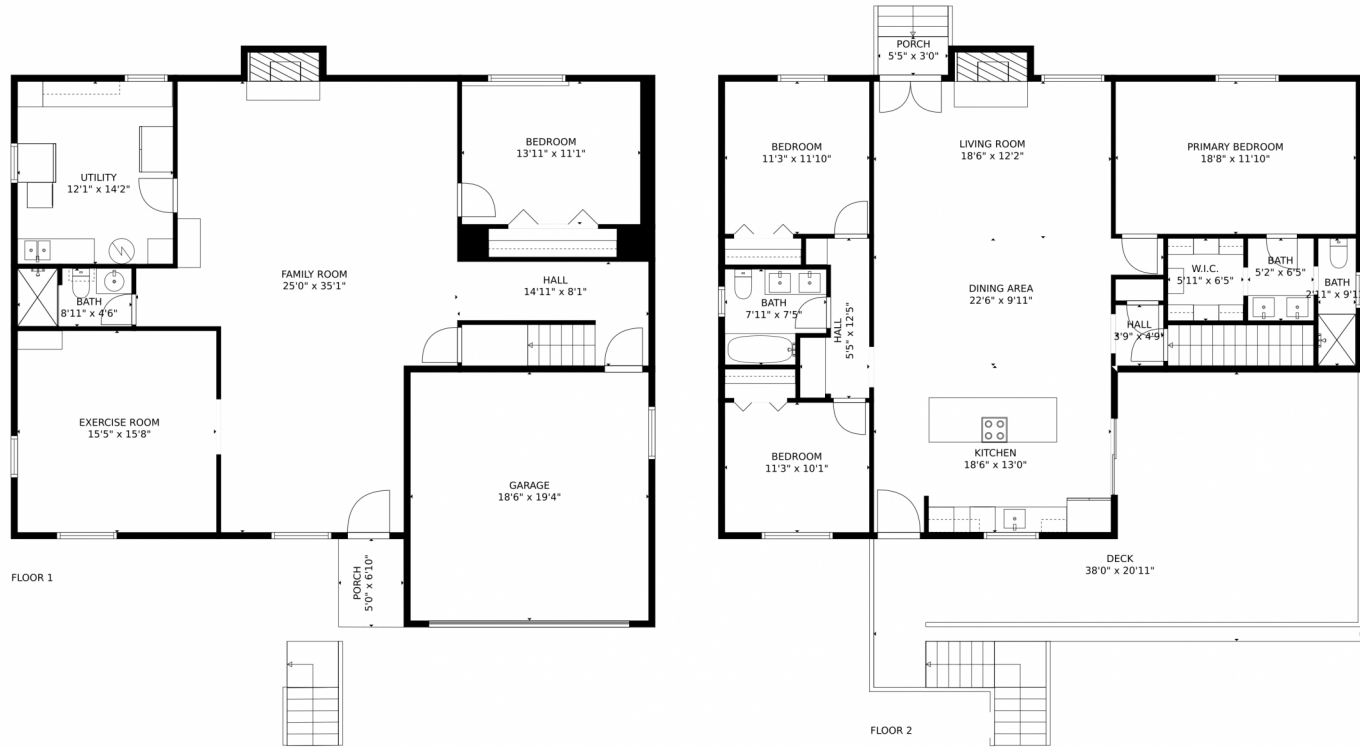
Disclaimer: Sizes and Dimensions are Approximate, Actual May Vary.



**Nick Shamburg**  
720-469-0007  
nick@spencerrealtyllc.com



# 9416 McShane Court, Parker, CO 80134 – All Levels



**TOTAL: 2970 sq. ft**  
Below Ground: 1481 sq. ft, FLOOR 2: 1489 sq. ft  
EXCLUDED AREAS: GARAGE: 358 sq. ft, PORCH: 51 sq. ft, DECK: 564 sq. ft  
MEASUREMENTS CALCULATED BY V1Photos.COM ARE DEEMED HIGHLY RELIABLE BUT NOT GUARANTEED.



Disclaimer: Sizes and Dimensions are Approximate, Actual May Vary.



**Nick Shamburg**  
720-469-0007  
nick@spencerrealtyllc.com



Scan code  
for more  
property  
details

