



7429 Turkey Rock Road  
Littleton, CO 80125



7429 Turkey Rock Road, Littleton, CO 80125 - floorplan\_single\_1



Single Family



2196 SQFT



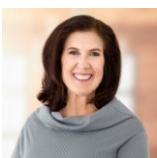
3 Beds



2/1 Baths



2 Car



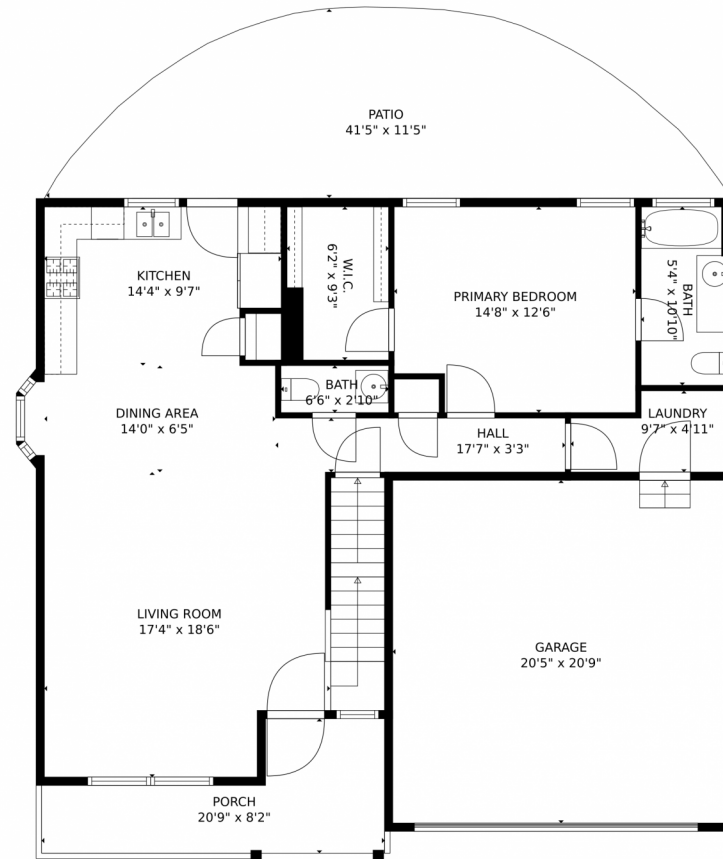
**Phoebe Nason**  
303-725-2564  
phoebenason@remax.net



Scan code  
for more  
property  
details



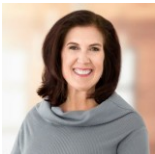
# 7429 Turkey Rock Road, Littleton, CO 80125 – 1st Floor



**TOTAL: 1895 sq. ft**  
Below Ground: 444 sq. ft, FLOOR 2: 1017 sq. ft, FLOOR 3: 434 sq. ft  
EXCLUDED AREAS: ELECTRICAL ROOM: 171 sq. ft, GARAGE: 424 sq. ft, PORCH: 114 sq. ft,  
PATIO: 346 sq. ft, EMBEDDED WINDOW: 5 sq. ft, OPEN TO BELOW: 42 sq. ft  
MEASUREMENTS CALCULATED BY V1Photos.com ARE DEEMED HIGHLY RELIABLE BUT NOT GUARANTEED.



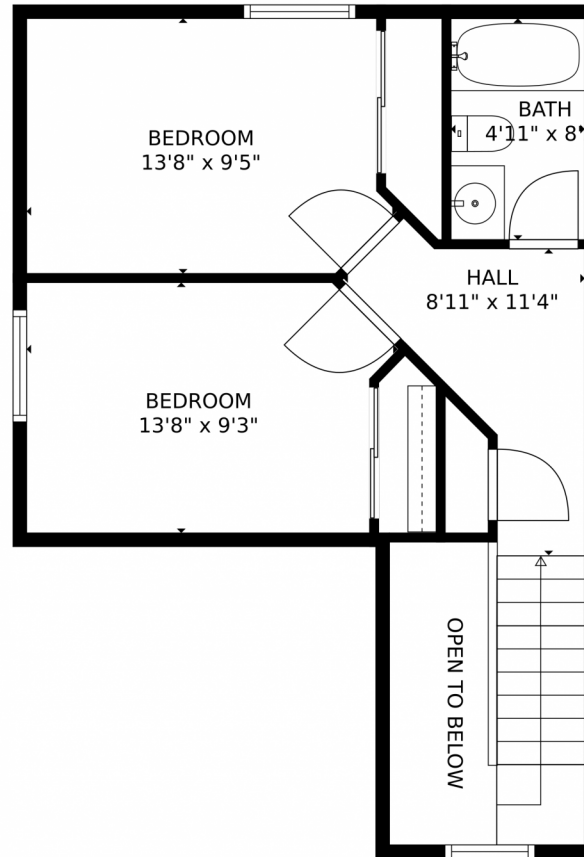
Disclaimer: Sizes and Dimensions are Approximate, Actual May Vary.



**Phoebe Nason**  
303-725-2564  
phoebenason@remax.net



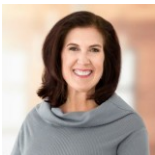
7429 Turkey Rock Road, Littleton, CO 80125 – 2nd Floor



**TOTAL: 1895 sq. ft**  
Below Ground: 444 sq. ft, FLOOR 2: 1017 sq. ft, FLOOR 3: 434 sq. ft  
EXCLUDED AREAS: ELECTRICAL ROOM: 171 sq. ft, GARAGE: 424 sq. ft, PORCH: 114 sq. ft,  
PATIO: 346 sq. ft, EMBEDDED WINDOW: 5 sq. ft, OPEN TO BELOW: 42 sq. ft  
MEASUREMENTS CALCULATED BY V1Photos.com ARE DEEMED HIGHLY RELIABLE BUT NOT GUARANTEED.



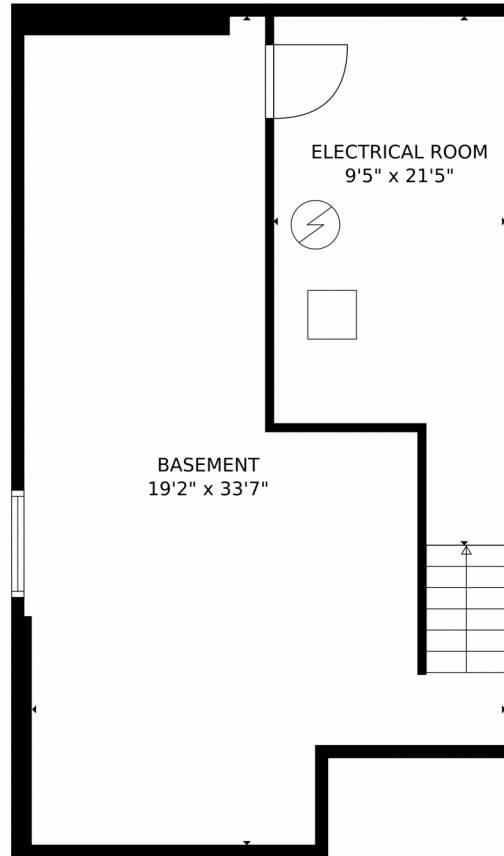
Disclaimer: Sizes and Dimensions are Approximate, Actual May Vary.



**Phoebe Nason**  
303-725-2564  
phoebenason@remax.net



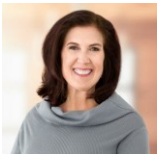
7429 Turkey Rock Road, Littleton, CO 80125 – Basement



**TOTAL: 1895 sq. ft**  
Below Ground: 444 sq. ft, FLOOR 2: 1017 sq. ft, FLOOR 3: 434 sq. ft  
EXCLUDED AREAS: ELECTRICAL ROOM: 171 sq. ft, GARAGE: 424 sq. ft, PORCH: 114 sq. ft,  
PATIO: 346 sq. ft, EMBEDDED WINDOW: 5 sq. ft, OPEN TO BELOW: 42 sq. ft  
MEASUREMENTS CALCULATED BY V1Photos.com ARE DEEMED HIGHLY RELIABLE BUT NOT GUARANTEED.



Disclaimer: Sizes and Dimensions are Approximate, Actual May Vary.

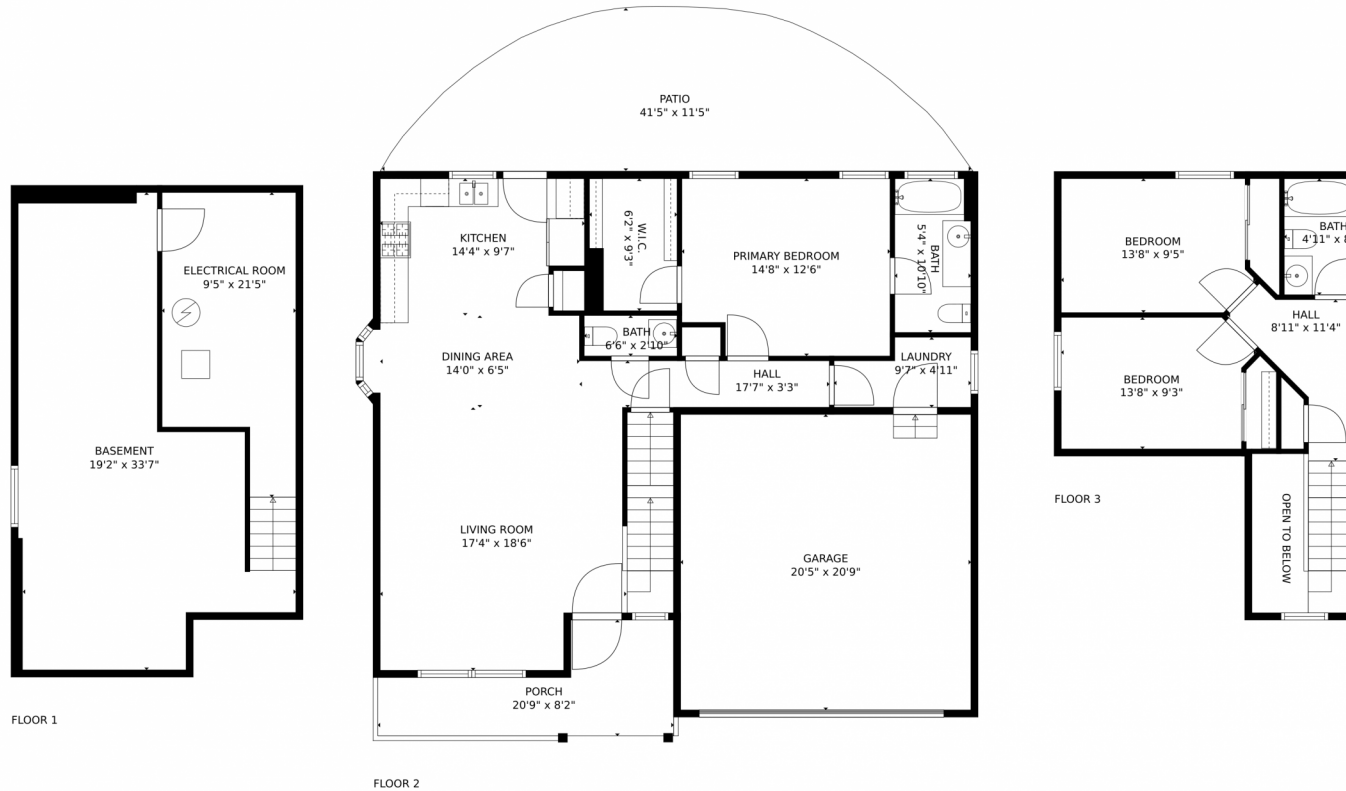


**Phoebe Nason**  
303-725-2564  
phoebenason@remax.net





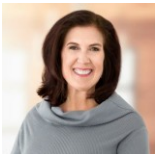
# 7429 Turkey Rock Road, Littleton, CO 80125 – All Floors



**TOTAL: 1895 sq. ft**  
Below Ground: 444 sq. ft, FLOOR 2: 1017 sq. ft, FLOOR 3: 434 sq. ft  
EXCLUDED AREAS: ELECTRICAL ROOM: 171 sq. ft, GARAGE: 424 sq. ft, PORCH: 114 sq. ft,  
PATIO: 346 sq. ft, EMBEDDED WINDOW: 5 sq. ft, OPEN TO BELOW: 42 sq. ft  
MEASUREMENTS CALCULATED BY V1Photos.com ARE DEEMED HIGHLY RELIABLE BUT NOT GUARANTEED.



Disclaimer: Sizes and Dimensions are Approximate, Actual May Vary.



**Phoebe Nason**  
303-725-2564  
phoebenason@remax.net

