



13252 Red Deer Trail
 Broomfield, CO 80020
 COMMUNITY: Redleaf

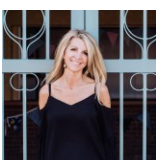
MLS # 8240714
 PRICE \$549,900



Single Family 2478 SQFT 2 Beds 2 Baths 2 Car 0.02 Acre

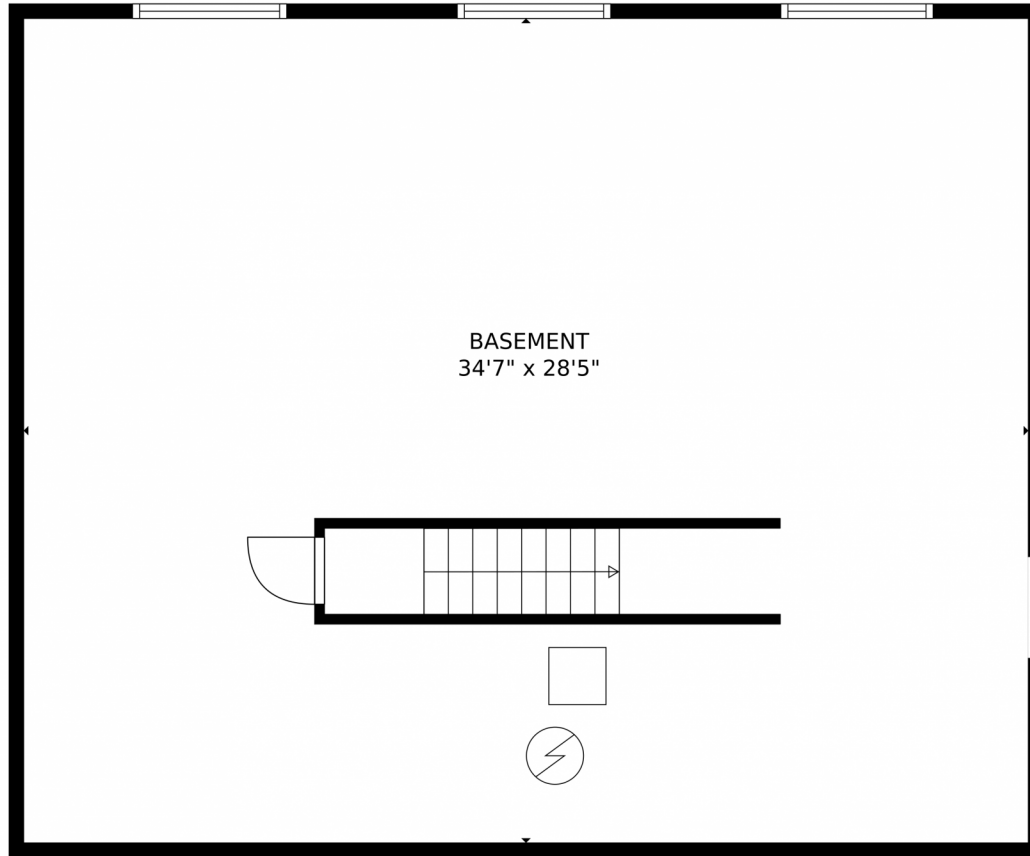
PROPERTY DETAILS

Introducing a stunning property in the sought-after Redleaf community in Broomfield, CO. This 2-bedroom, 2-bathroom home offers 2,478 sqft of living space and a 2-car garage. The front yard is beautifully maintained, providing privacy and tranquility. Inside, there is an unfurnished office with a ceiling fan and hardwood floors. The primary bedroom features a vaulted ceiling, plush carpet floors, and an ensuite bathroom. The living room is spacious and filled with natural light. The kitchen is equipped with stainless steel appliances and a breakfast bar. The patio offers a serene outdoor space. The Redleaf community offers parks, walking trails, and community events. Don't miss out on this exceptional property!



Christy Hepp
 303-910-5393
 cnishi1068@msn.com
<https://christysellscolorado.com>





TOTAL: 1371 sq. ft
Below Ground: 0 sq. ft, FLOOR 2: 1371 sq. ft
EXCLUDED AREAS: BASEMENT: 983 sq. ft, GARAGE: 383 sq. ft
MEASUREMENTS CALCULATED BY V1Photos.com ARE DEEMED HIGHLY RELIABLE BUT NOT GUARANTEED.



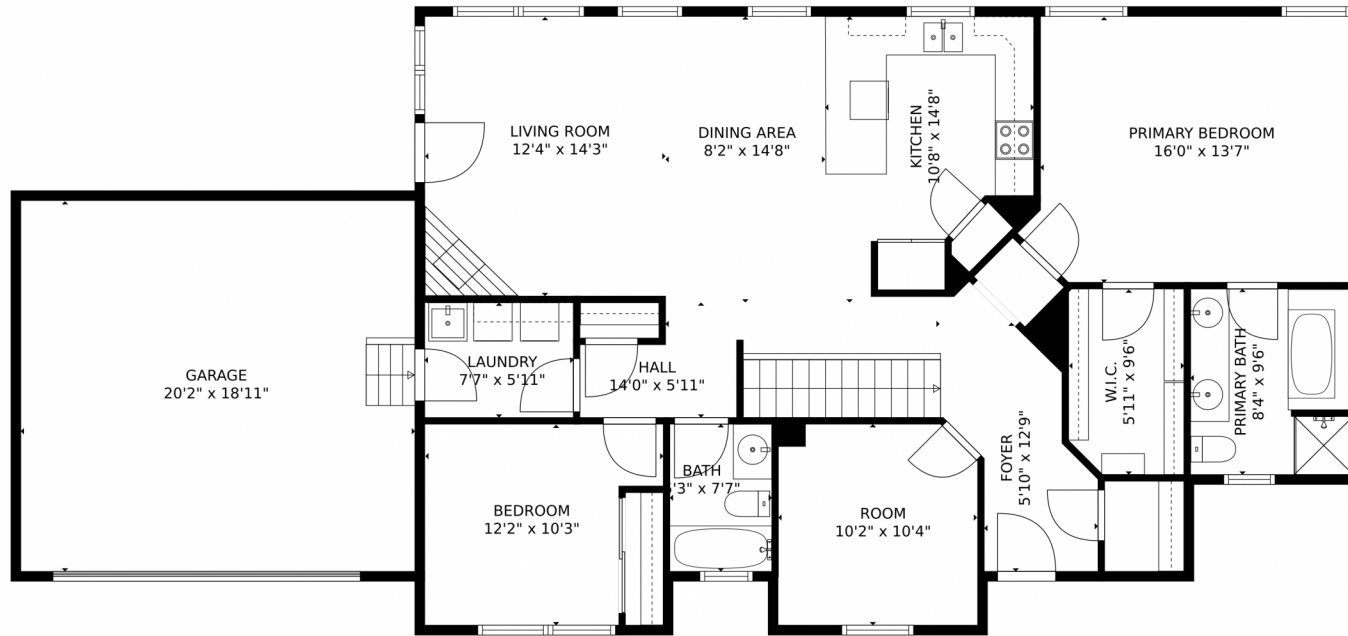
Disclaimer: Sizes and Dimensions are Approximate, Actual May Vary.



Christy Hepp
303-910-5393
cnishi1068@msn.com
<https://christysellscolorado.com>



13252 Red Deer Trail, Broomfield, CO 80020 – floorplan_single_1



TOTAL: 1371 sq. ft
Below Ground: 0 sq. ft, FLOOR 2: 1371 sq. ft
EXCLUDED AREAS: BASEMENT: 983 sq. ft, GARAGE: 383 sq. ft
MEASUREMENTS CALCULATED BY V1Photos.com ARE DEEMED HIGHLY RELIABLE BUT NOT GUARANTEED.



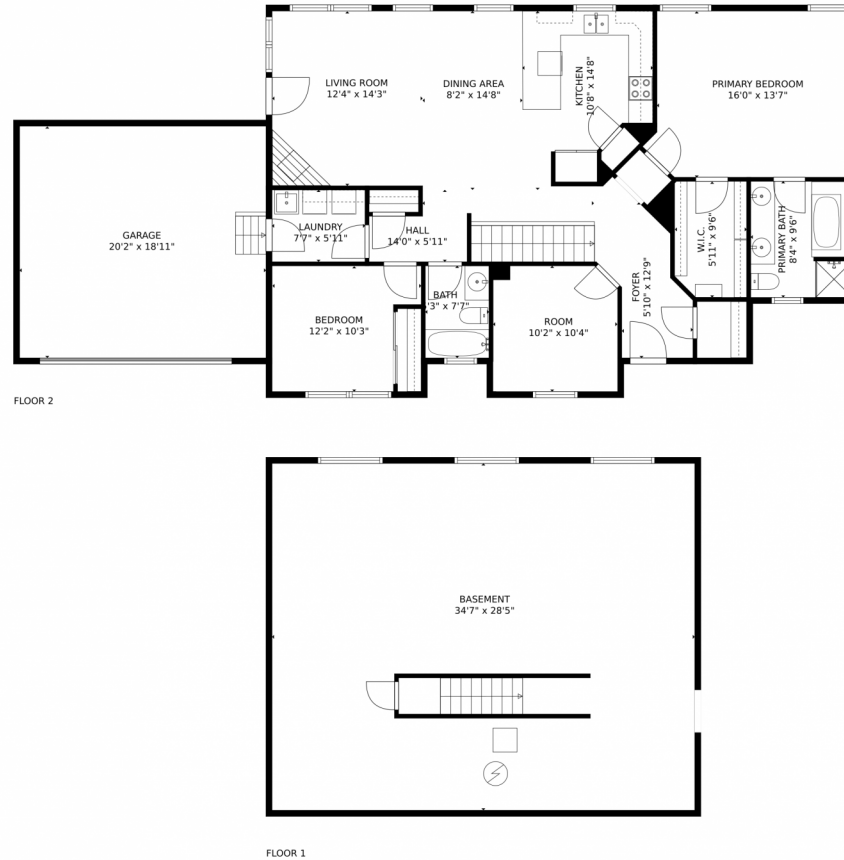
Disclaimer: Sizes and Dimensions are Approximate, Actual May Vary.



Christy Hepp
303-910-5393
cnishi1068@msn.com
<https://christysellscolorado.com>



13252 Red Deer Trail, Broomfield, CO 80020 – floorplan_all_0



TOTAL: 1371 sq. ft
Below Ground: 0 sq. ft, FLOOR 2: 1371 sq. ft
EXCLUDED AREAS: BASEMENT: 983 sq. ft, GARAGE: 383 sq. ft
MEASUREMENTS CALCULATED BY V1Photos.com ARE DEEMED HIGHLY RELIABLE BUT NOT GUARANTEED.



Disclaimer: Sizes and Dimensions are Approximate, Actual May Vary.



Christy Hepp
303-910-5393
cnishi1068@msn.com
<https://christysellscolorado.com>



Scan code
for more
property
details