



808 solar isle drive
fort lauderdale, FL 33301



808 solar isle drive, fort lauderdale, FL 33301 - 2nd Level



Single Family

3454 SQFT

5 Beds

3 Baths

3 Car



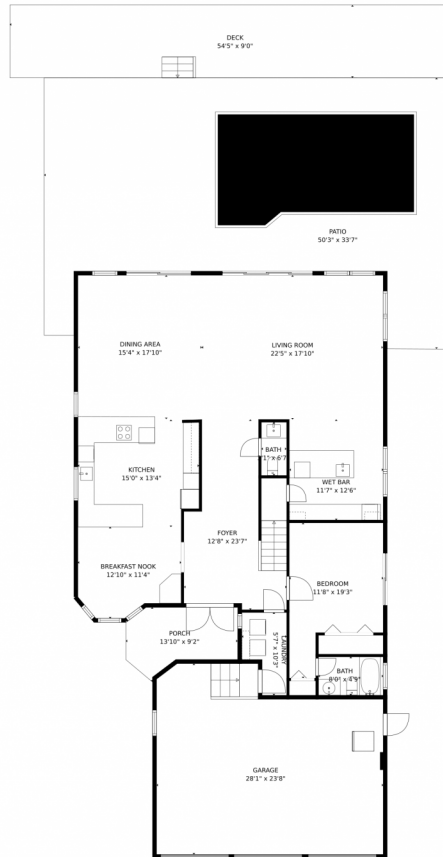
Matt Smith
954-632-7344
matt@sflrealtysource.com



Scan code
for more
property
details



808 solar isle drive, fort lauderdale, FL 33301 – Main Level



TOTAL: 3204 sq. ft
FLOOR 1: 1738 sq. ft, FLOOR 2: 1466 sq. ft
EXCLUDED AREAS: GARAGE: 593 sq. ft, PORCH: 95 sq. ft, PATIO: 1003 sq. ft,
DECK: 491 sq. ft, BALCONY: 104 sq. ft, OPEN TO BELOW: 536 sq. ft

MEASUREMENTS CALCULATED BY V1Photos.com ARE DEEMED HIGHLY RELIABLE BUT NOT GUARANTEED.



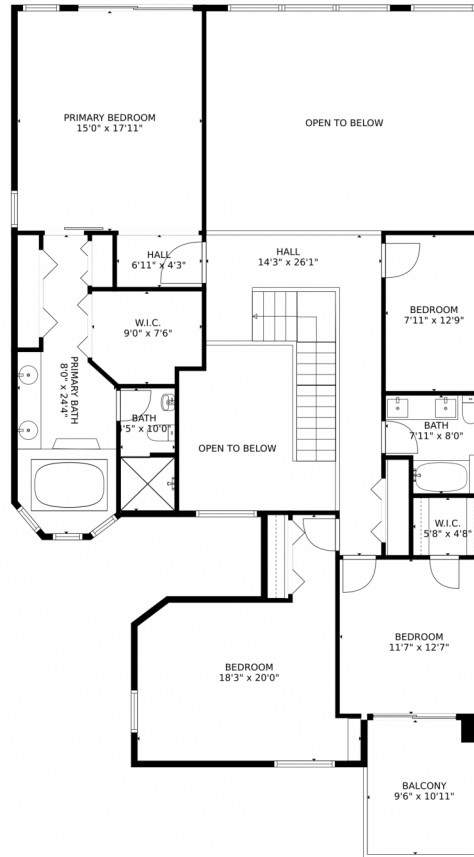
Disclaimer: Sizes and Dimensions are Approximate, Actual May Vary.



Matt Smith
954-632-7344
matt@sflrealtysource.com



808 solar isle drive, fort lauderdale, FL 33301 – 2nd Level



TOTAL: 3204 sq. ft
FLOOR 1: 1738 sq. ft, FLOOR 2: 1466 sq. ft
EXCLUDED AREAS: GARAGE: 593 sq. ft, PORCH: 95 sq. ft, PATIO: 1003 sq. ft,
DECK: 491 sq. ft, BALCONY: 104 sq. ft, OPEN TO BELOW: 536 sq. ft
MEASUREMENTS CALCULATED BY V1Photos.com ARE DEEMED HIGHLY RELIABLE BUT NOT GUARANTEED.



Disclaimer: Sizes and Dimensions are Approximate, Actual May Vary.



Matt Smith
954-632-7344
matt@sflrealtysource.com



808 solar isle drive, fort lauderdale, FL 33301 – All Levels



TOTAL: 3204 sq. ft
FLOOR 1: 1738 sq. ft, FLOOR 2: 1466 sq. ft
EXCLUDED AREAS: GARAGE: 593 sq. ft, PORCH: 95 sq. ft, PATIO: 1003 sq. ft,
DECK: 491 sq. ft, BALCONY: 104 sq. ft, OPEN TO BELOW: 536 sq. ft

MEASUREMENTS CALCULATED BY V1Photos.com ARE DEEMED HIGHLY RELIABLE BUT NOT GUARANTEED.



Disclaimer: Sizes and Dimensions are Approximate, Actual May Vary.



Matt Smith
954-632-7344
matt@sflrealtysource.com



Scan code
for more
property
details

