

Rare Opportunity in Fickel Farm



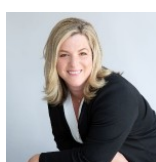
 Multi Family  2645 SQFT  2 Beds  2 Baths  2 Car  0.11 Acre

PROPERTY DETAILS

This charming brick ranch home offers comfort and convenience. It has a main floor primary bedroom with a luxurious jetted tub and step-in shower. There is also a secondary bedroom on the main floor. The open concept living area includes a kitchen, dining room, and cozy living room with a gas fireplace. There is an additional loft area for extra space. The spacious unfinished basement offers potential for customization. The home has a low maintenance front yard with inviting front and side porches. It is located in the tranquil neighborhood of Fickle Farm, surrounded by mature landscaping and shade trees. It is conveniently close to downtown Berthoud and Pioneer Park. No Metro District or HOA.



Jay Kalinski
303-489-1050
jay@kalinskiteam.com



Cristi Knudsen
720-722-4252
cristiknudsen@remax.net

