



Lot 1, County Road 5224
Tabernash, CO 80478
COMMUNITY: Pole Creek Valley

MLS # 5836088
PRICE \$1,695,000

EPIC 12+ Acre Parcel To Build Your Dream Home!



Vacant Land



12.66 Acre

PROPERTY DETAILS

Come build your dream mountain retreat on this exceptional 12+ acre parcel in Tabernash. Offering truly breathtaking panoramic views of Winter Park Resort and the surrounding mountain ranges, this property combines the best of convenience, privacy, and natural beauty. Just off Highway 40, the land enjoys easy year-round access on paved, county-maintained roads—close enough for quick trips, yet far enough away to preserve a peaceful setting free from road noise. The parcel's gentle terrain makes construction more straightforward than many other mountain lots, providing flexibility for your building plans and room to create the home and lifestyle you've envisioned. With 12+ acres, there is ample space for privacy, outdoor living, and all the mountain amenities you desire. Utilities include electricity and natural gas available nearby (5224), while a well and septic will be required. TONS of outdoor recreation. 15-minute drive to world-class skiing, biking, and festivals at Winter Park Resort, 6 minutes to Pole Creek Golf Club, and 26 minutes to boating and fishing at Lake Granby.



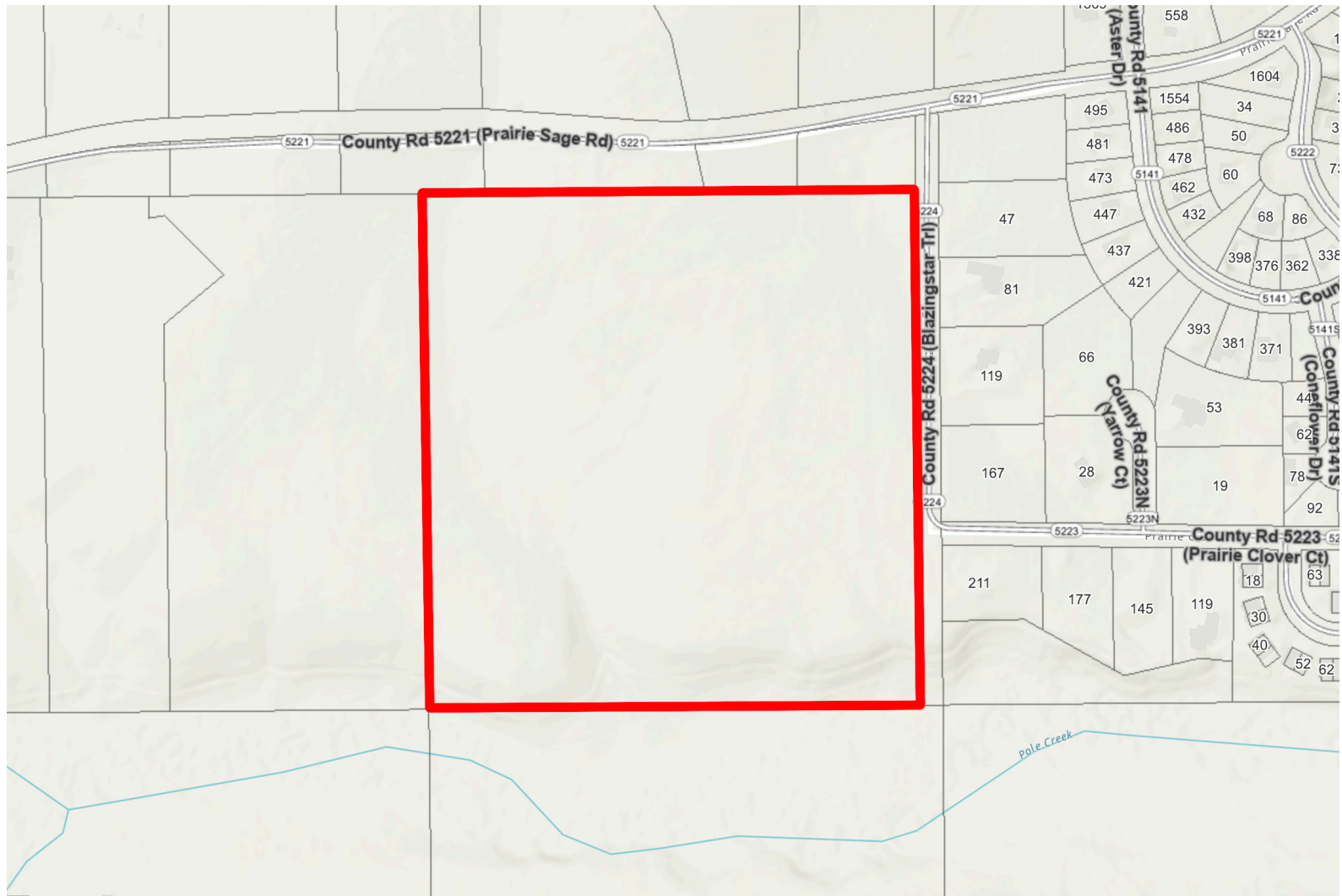
K.C. Golfopoulos
720-750-2269
mountainrealtykc@gmail.com
<https://mountainrealtycolorado.com/>



Scan code
for more
property
details



Lot 1, County Road 5224, Tabernash, CO 80478 — plat map



Disclaimer: Sizes and Dimensions are Approximate, Actual May Vary.



K.C. Golfinopoulos
720-750-2269
mountainrealtykc@gmail.com
<https://mountainrealtycolorado.com/>



Scan code
for more
property
details

