



9248 Black Mountain Drive
Conifer, CO 80433



Single Family



1900 SQFT



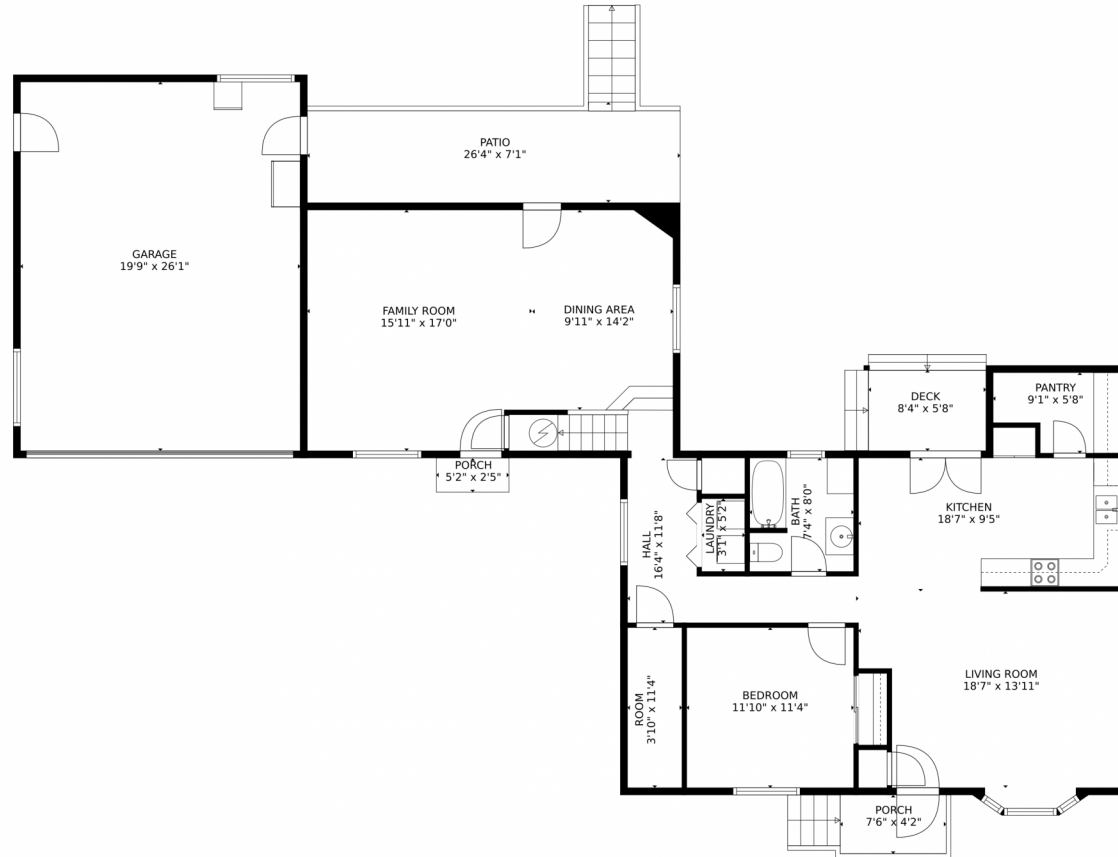
Amber Wermerskirchen
720-560-9772
amber@thewrealestategroup.com



Scan code
for more
property
details



9248 Black Mountain Drive, Conifer, CO 80433 – Main Level



TOTAL: 1756 sq. ft

Below Ground: 0 sq. ft, FLOOR 2: 1314 sq. ft, FLOOR 3: 0 sq. ft, FLOOR 4: 442 sq. ft
EXCLUDED AREAS: STORAGE: 491 sq. ft, PATIO: 242 sq. ft, GARAGE: 516 sq. ft,
DECK: 117 sq. ft, PORCH: 43 sq. ft, EMBEDDED WINDOW: 9 sq. ft

MEASUREMENTS CALCULATED BY V1Photos.COM ARE DEEMED HIGHLY RELIABLE BUT NOT GUARANTEED.



Disclaimer: Sizes and Dimensions are Approximate, Actual May Vary.



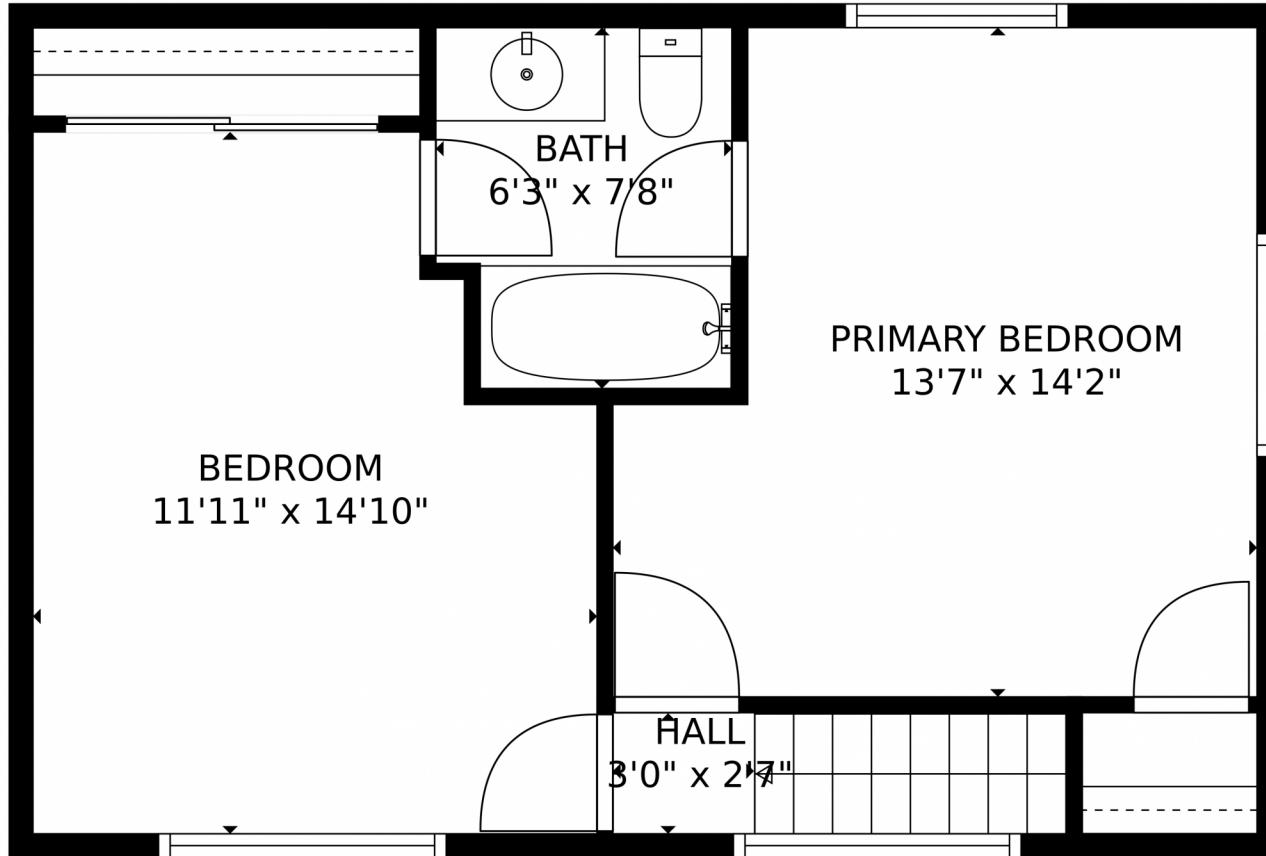
Amber Wermerskirchen
720-560-9772
amber@thewrealestategroup.com



Scan code
for more
property
details



9248 Black Mountain Drive, Conifer, CO 80433 – Upper Level



TOTAL: 1756 sq. ft
Below Ground: 0 sq. ft, FLOOR 2: 1314 sq. ft, FLOOR 3: 0 sq. ft, FLOOR 4: 442 sq. ft
EXCLUDED AREAS: STORAGE: 491 sq. ft, PATIO: 242 sq. ft, GARAGE: 516 sq. ft,
DECK: 117 sq. ft, PORCH: 43 sq. ft, EMBEDDED WINDOW: 9 sq. ft
MEASUREMENTS CALCULATED BY V1Photos.com ARE DEEMED HIGHLY RELIABLE BUT NOT GUARANTEED.

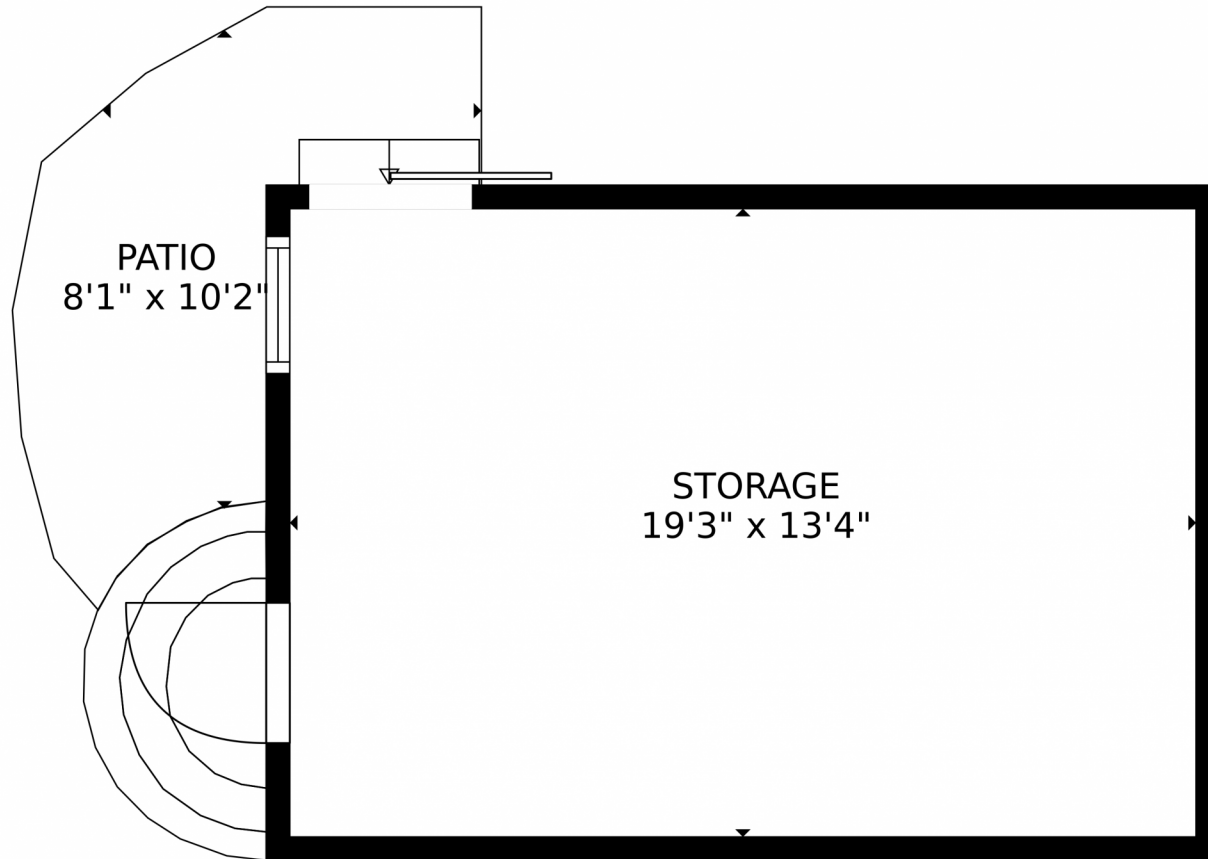


Disclaimer: Sizes and Dimensions are Approximate, Actual May Vary.



Amber Wermerskirchen
720-560-9772
amber@thewrealestategroup.com





TOTAL: 1756 sq. ft
Below Ground: 0 sq. ft, FLOOR 2: 1314 sq. ft, FLOOR 3: 0 sq. ft, FLOOR 4: 442 sq. ft
EXCLUDED AREAS: STORAGE: 491 sq. ft, PATIO: 242 sq. ft, GARAGE: 516 sq. ft,
DECK: 117 sq. ft, PORCH: 43 sq. ft, EMBEDDEDWINDOW: 9 sq. ft

MEASUREMENTS CALCULATED BY V1Photos.com ARE DEEMED HIGHLY RELIABLE BUT NOT GUARANTEED.



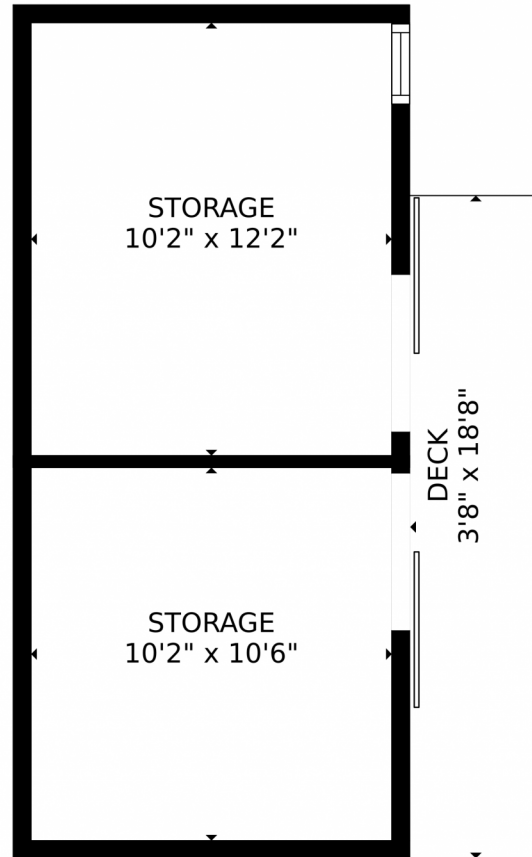
Disclaimer: Sizes and Dimensions are Approximate, Actual May Vary.



Amber Wermerskirchen
720-560-9772
amber@thewrealestategroup.com



Scan code
for more
property
details



TOTAL: 1756 sq. ft
Below Ground: 0 sq. ft, FLOOR 2: 1314 sq. ft, FLOOR 3: 0 sq. ft, FLOOR 4: 442 sq. ft
EXCLUDED AREAS: STORAGE: 491 sq. ft, PATIO: 242 sq. ft, GARAGE: 516 sq. ft,
DECK: 117 sq. ft, PORCH: 43 sq. ft, EMBEDDEDWINDOW: 9 sq. ft
MEASUREMENTS CALCULATED BY V1Photos.com ARE DEEMED HIGHLY RELIABLE BUT NOT GUARANTEED.



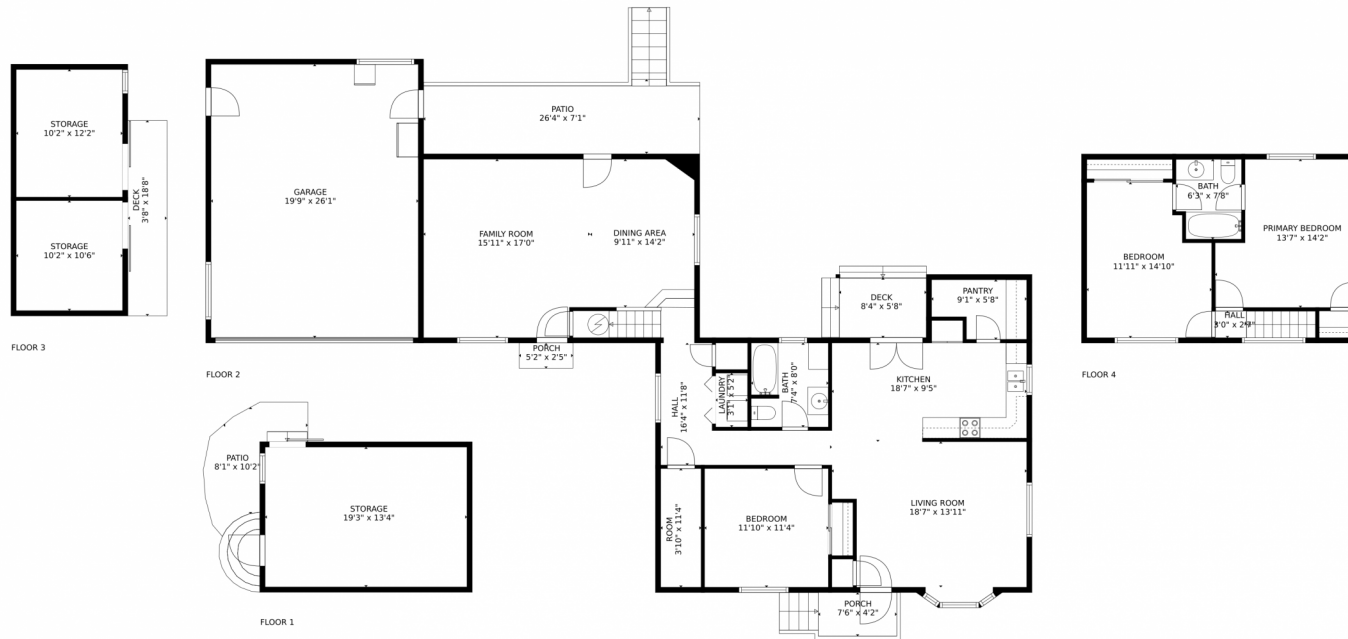
Disclaimer: Sizes and Dimensions are Approximate, Actual May Vary.



Amber Wermerskirchen
720-560-9772
amber@thewrealestategroup.com



9248 Black Mountain Drive, Conifer, CO 80433 – All Levels



TOTAL: 1756 sq. ft
Below Ground: 0 sq. ft, FLOOR 2: 1314 sq. ft, FLOOR 3: 0 sq. ft, FLOOR 4: 442 sq. ft
EXCLUDED AREAS: STORAGE: 491 sq. ft, PATIO: 242 sq. ft, GARAGE: 516 sq. ft,
DECK: 117 sq. ft, PORCH: 43 sq. ft, EMBEDDED WINDOW: 9 sq. ft

MEASUREMENTS CALCULATED BY V1Photos.COM ARE DEEMED HIGHLY RELIABLE BUT NOT GUARANTEED.



Disclaimer: Sizes and Dimensions are Approximate, Actual May Vary.



Amber Wermerskirchen
720-560-9772
amber@thewrealestategroup.com

