



 Single Family  1,550 SQFT  3 Beds  2/1 Baths  2 Car

PROPERTY DETAILS

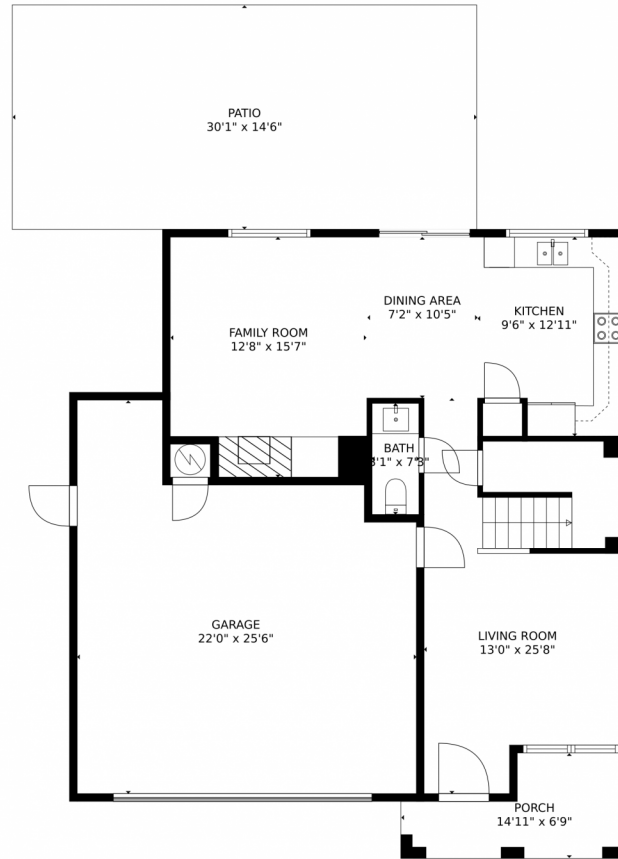
Welcome to this beautifully maintained and move-in ready home in the heart of Rock Creek, one of Superior's most sought-after neighborhoods! This 3-bedroom, 3-bathroom home offers 1,550 square feet of thoughtfully designed living space, blending comfort, style, and modern updates to create the perfect place to call home. Step inside and be greeted by an inviting, light-filled interior with an open floor plan that's perfect for both everyday living and entertaining. The fully remodeled kitchen features sleek countertops, updated cabinetry, and stainless steel appliances, making it a chef's delight. The remodeled bathrooms offer a fresh, modern feel with stylish fixtures and finishes. Upstairs, you'll love the spacious bedrooms, including two with breathtaking mountain views! Each bedroom offers plenty of closet space and natural light, creating a warm and comfortable atmosphere. Outside, the backyard is an entertainer's dream for hosting summer barbecues, enjoying a quiet morning coffee, or letting pets and kids play. And for those who need extra storage or workspace, the oversized, insulated 2-car garage comes with a new garage door for added convenience. Additional upgrades include a brand-new roof (2023), hardwood floors, furnace, central A/C, and hot water heater replaced, as well as other improvements that make this home truly turnkey.



Jay Kalinski
303-489-1050
jay@kalinskiteam.com



3727 Castle Peak Avenue, Superior, CO 80027 – 1st Floor



TOTAL: 1541 sq. ft
FLOOR 1: 702 sq. ft, FLOOR 2: 839 sq. ft
EXCLUDED AREAS: PORCH: 79 sq. ft, PATIO: 439 sq. ft, GARAGE: 470 sq. ft
MEASUREMENTS CALCULATED BY V1Photos.COM ARE DEEMED HIGHLY RELIABLE BUT NOT GUARANTEED.



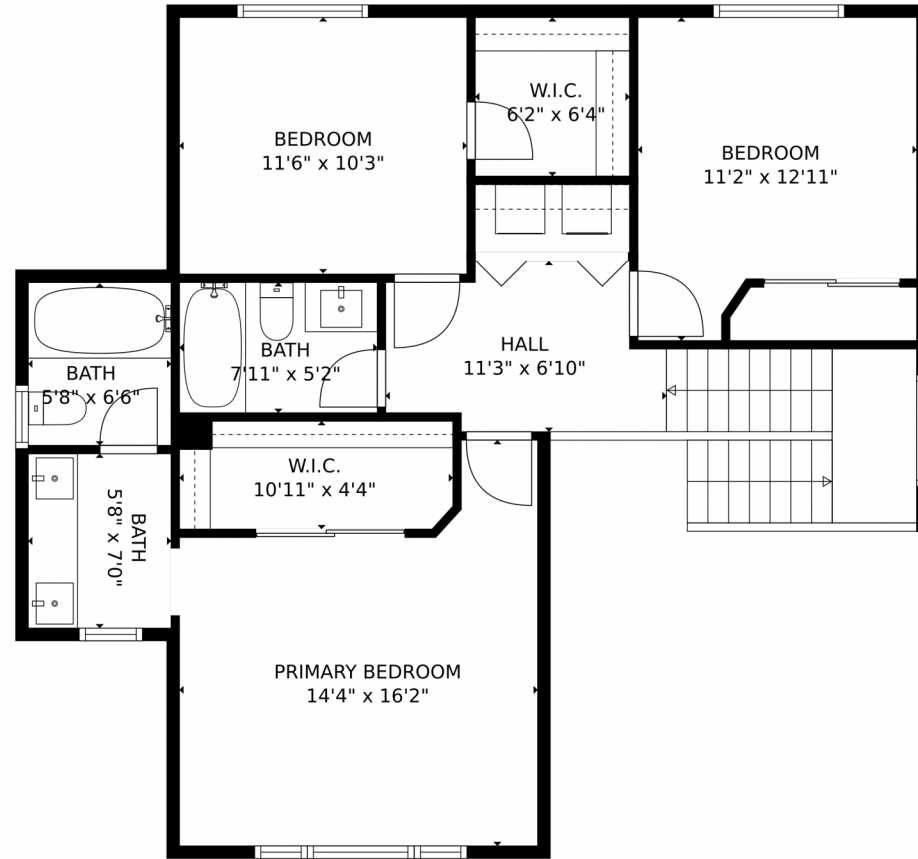
Disclaimer: Sizes and Dimensions are Approximate, Actual May Vary.



Jay Kalinski
303-489-1050
jay@kalinskiteam.com



3727 Castle Peak Avenue, Superior, CO 80027 – 2nd Floor



TOTAL: 1541 sq. ft
FLOOR 1: 702 sq. ft, FLOOR 2: 839 sq. ft
EXCLUDED AREAS: PORCH: 79 sq. ft, PATIO: 439 sq. ft, GARAGE: 470 sq. ft
MEASUREMENTS CALCULATED BY V1Photos.com ARE DEEMED HIGHLY RELIABLE BUT NOT GUARANTEED.



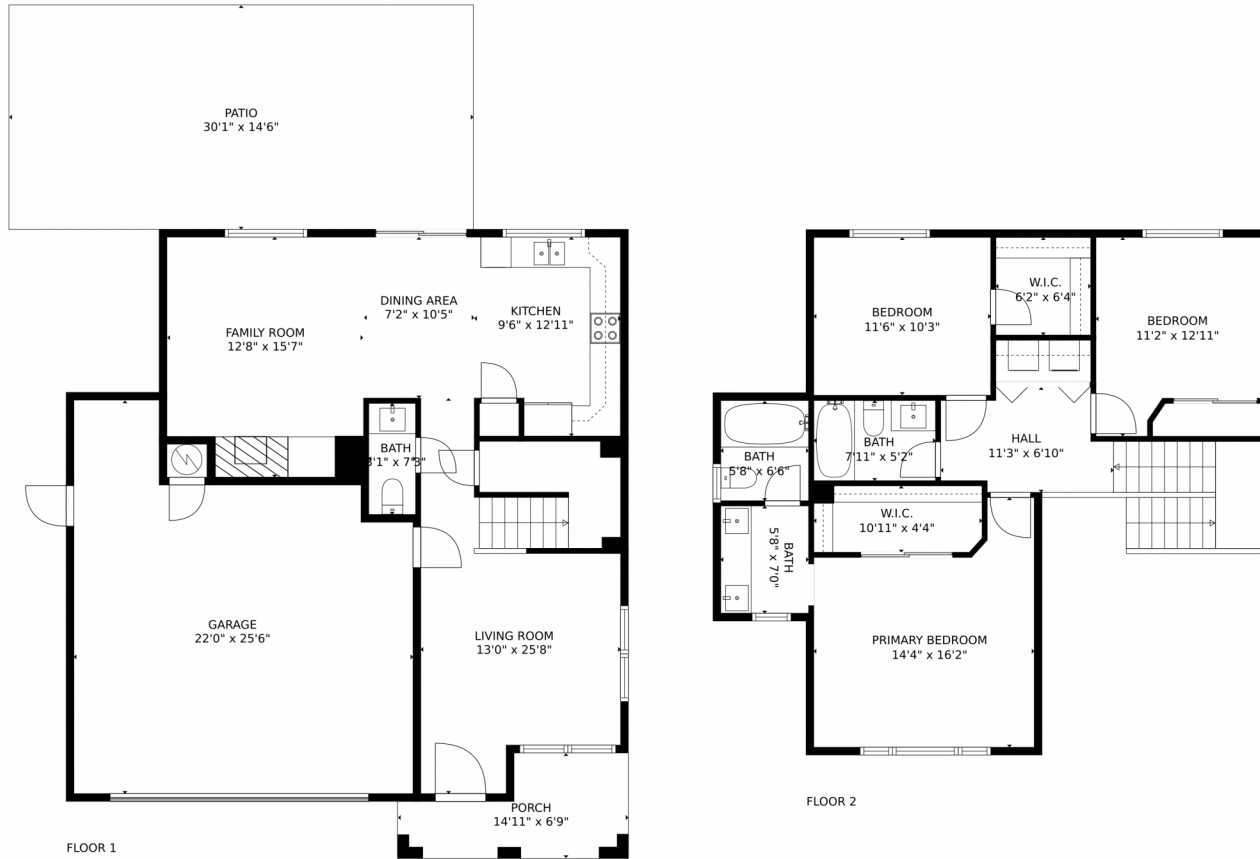
Disclaimer: Sizes and Dimensions are Approximate, Actual May Vary.



Jay Kalinski
303-489-1050
jay@kalinskiteam.com



3727 Castle Peak Avenue, Superior, CO 80027 – All Floors



TOTAL: 1541 sq. ft
FLOOR 1: 702 sq. ft, FLOOR 2: 839 sq. ft
EXCLUDED AREAS: PORCH: 79 sq. ft, PATIO: 439 sq. ft, GARAGE: 470 sq. ft
MEASUREMENTS CALCULATED BY V1Photos.COM ARE DEEMED HIGHLY RELIABLE BUT NOT GUARANTEED.



Disclaimer: Sizes and Dimensions are Approximate, Actual May Vary.



Jay Kalinski
303-489-1050
jay@kalinskiteam.com

