



Single Family



1625 SQFT



Taylor Haas

303-665-7368

taylorh@coloradorpm.com

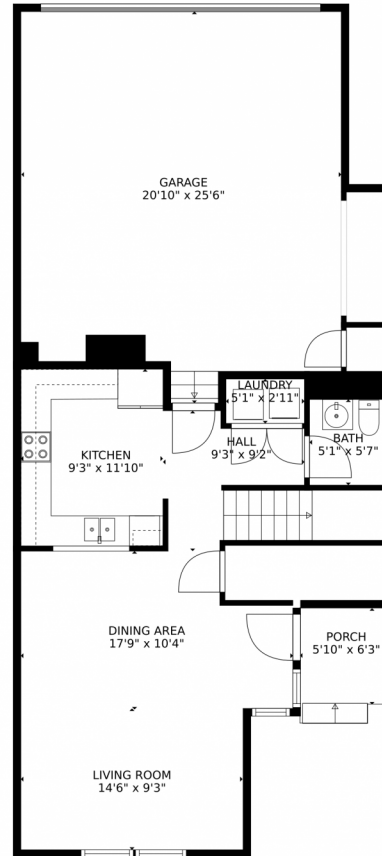
<https://www.coloradorpm.com/available-rental-properties-denver>



Scan code
for more
property
details



7386 Sandy Springs Point, Fountain, CO 80817 – Main Level



TOTAL: 1563 sq. ft
FLOOR 1: 632 sq. ft, FLOOR 2: 931 sq. ft
EXCLUDED AREAS: GARAGE: 490 sq. ft, PORCH: 42 sq. ft

MEASUREMENTS CALCULATED BY V1Photos.com ARE DEEMED HIGHLY RELIABLE BUT NOT GUARANTEED.



Disclaimer: Sizes and Dimensions are Approximate, Actual May Vary.



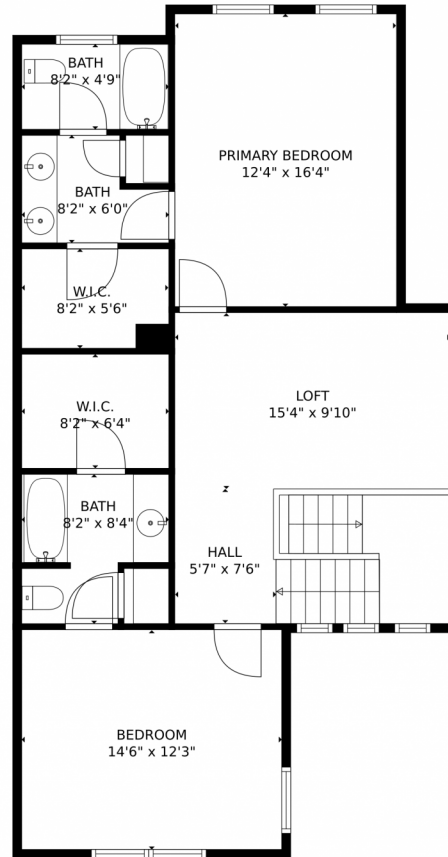
Taylor Haas
303-665-7368
taylorh@coloradorpm.com
<https://www.coloradorpm.com/available-rental-properties-denver>



Scan code
for more
property
details



7386 Sandy Springs Point, Fountain, CO 80817 – Upper Level



TOTAL: 1563 sq. ft
FLOOR 1: 632 sq. ft, FLOOR 2: 931 sq. ft
EXCLUDED AREAS: GARAGE: 490 sq. ft, PORCH: 42 sq. ft

MEASUREMENTS CALCULATED BY V1Photos.com ARE DEEMED HIGHLY RELIABLE BUT NOT GUARANTEED.



Disclaimer: Sizes and Dimensions are Approximate, Actual May Vary.



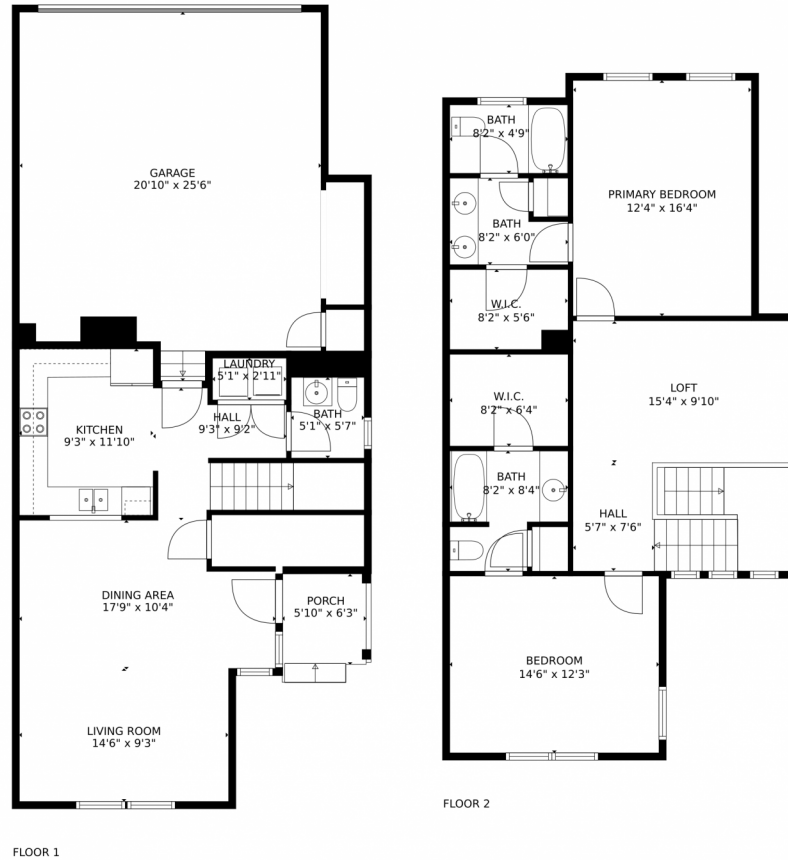
Taylor Haas
303-665-7368
taylorh@coloradorpm.com
<https://www.coloradorpm.com/available-rental-properties-denver>



Scan code
for more
property
details



7386 Sandy Springs Point, Fountain, CO 80817 – All Levels



TOTAL: 1563 sq. ft
FLOOR 1: 632 sq. ft, FLOOR 2: 931 sq. ft
EXCLUDED AREAS: GARAGE: 490 sq. ft, PORCH: 42 sq. ft

MEASUREMENTS CALCULATED BY V1Photos.com ARE DEEMED HIGHLY RELIABLE BUT NOT GUARANTEED.



Disclaimer: Sizes and Dimensions are Approximate, Actual May Vary.



Taylor Haas
303-665-7368
taylorh@coloradorpm.com
<https://www.coloradorpm.com/available-rental-properties-denver>



Scan code
for more
property
details

