



Single Family



2347 SQFT



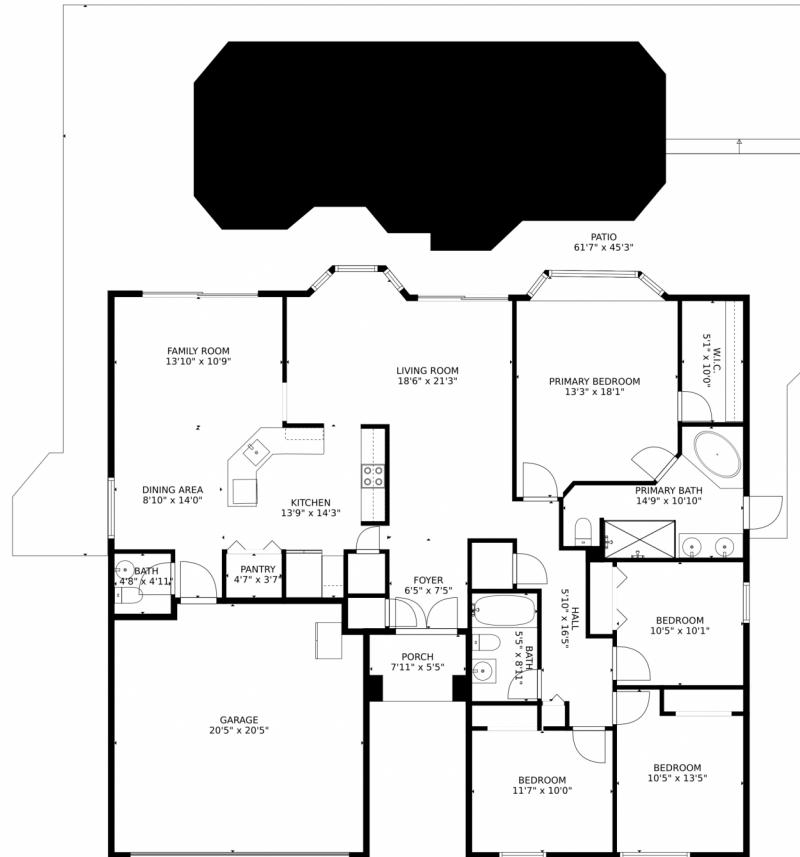
**Malaqui Geibel**  
305-336-2118  
geibelhomes@gmail.com



Scan code  
for more  
property  
details



# 10396 Grove Street, Cooper City, FL 33328 – Main Level



**TOTAL: 1797 sq. ft**  
FLOOR 1: 1797 sq. ft  
EXCLUDED AREAS: GARAGE: 406 sq. ft, PORCH: 44 sq. ft, PATIO: 1035 sq. ft  
MEASUREMENTS CALCULATED BY V1Photos.com ARE DEEMED HIGHLY RELIABLE BUT NOT GUARANTEED.



Disclaimer: Sizes and Dimensions are Approximate, Actual May Vary.



**Malaqui Geibel**  
305-336-2118  
geibelhomes@gmail.com

