






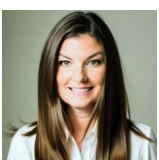
SOLD!!



 Single Family  2447 SQFT  3 Beds  2/1 Baths  1 Car  0.16 Acre

## PROPERTY DETAILS

Convenient, comfortable, beautiful home in a desirable location. Adjacent to a walking trail and greenbelt. Close to Butterfield Park for summer concerts. Spectacular first floor layout with hardwood floors. Office and cozy living area with fireplace. Kitchen with granite countertops and stainless-steel appliances. Separate dining room. Upstairs has primary bedroom, two additional bedrooms, full bath, and loft. Large walkout basement for additional living space or storage. Newer roof, hot water heater, kitchen backsplash, toilets, fans, and tile floors. Sellers put new carpet in. Rebuilt and serviced sprinkler system. Walking distance to pool, tennis courts, and sports fields. Close to I-25, schools, shopping, and restaurants.



**Kate Dulin**  
303-681-4431  
kate.dulin@kw.com

