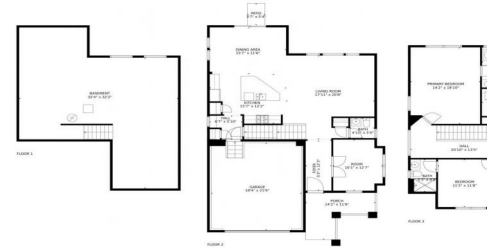




15049 Vienna Circle, Parker, CO 80134 - floorplan_all_0



Single Family 3385 SQFT 4 Beds 3/1 Baths 2 Car 0.16 Acre

PROPERTY DETAILS

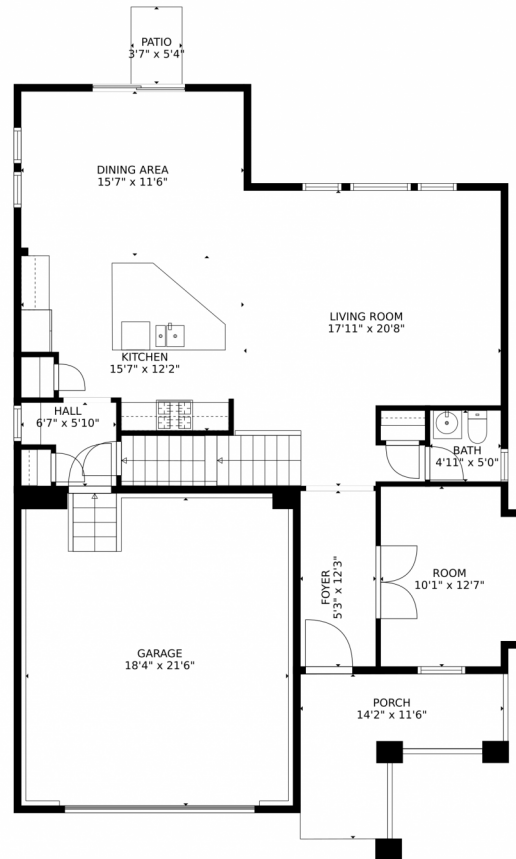
Welcome to 15049 Vienna Circle, a stunning Single Family home in Sierra Ridge, Parker, CO. This property offers 4 bedrooms, 3.5 bathrooms, and a spacious floor plan with high-end finishes. The kitchen features stainless steel appliances and stone countertops. The primary bedroom has a luxurious ensuite bathroom. Outside, there are front and back outdoor spaces. Sierra Ridge offers parks, walking trails, and a strong sense of community.



Terrence Lennon
720-858-8174
terrence@newagere.com



15049 Vienna Circle, Parker, CO 80134 – Main Level



TOTAL: 2268 sq. ft
BELOW GROUND: 0 sq. ft, FLOOR 2: 991 sq. ft, FLOOR 3: 1277 sq. ft
EXCLUDED AREAS: BASEMENT: 913 sq. ft, GARAGE: 414 sq. ft, PORCH: 112 sq. ft,
PATIO: 19 sq. ft

MEASUREMENTS CALCULATED BY V1Photos.com ARE DEEMED HIGHLY RELIABLE BUT NOT GUARANTEED.



Disclaimer: Sizes and Dimensions are Approximate, Actual May Vary.



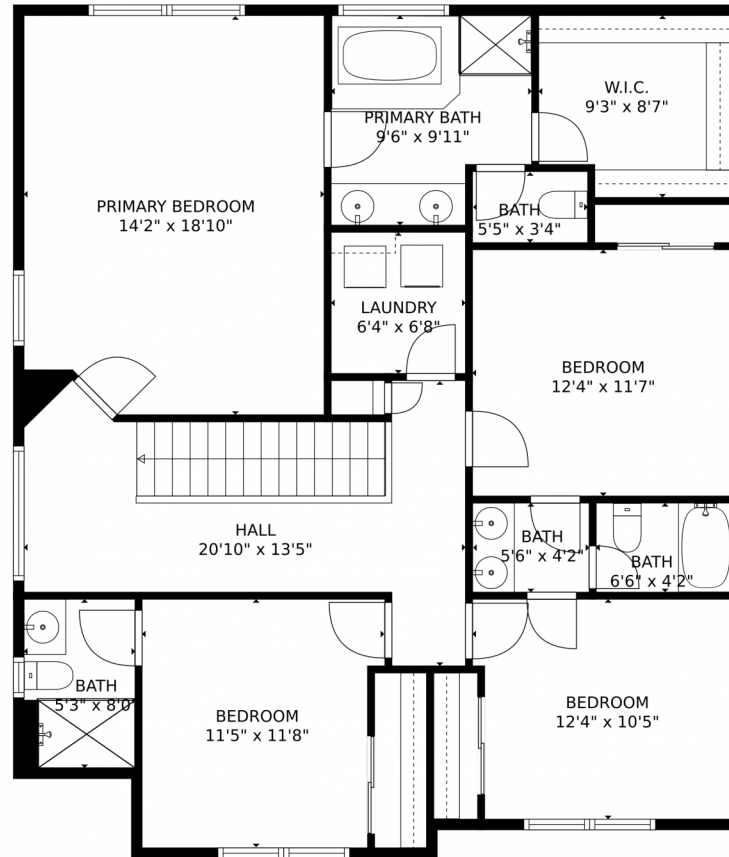
Terrence Lennon
720-858-8174
terrence@newagere.com



Scan code
for more
property
details



15049 Vienna Circle, Parker, CO 80134 – Second Level



TOTAL: 2268 sq. ft
BELOW GROUND: 0 sq. ft, FLOOR 2: 991 sq. ft, FLOOR 3: 1277 sq. ft
EXCLUDED AREAS: BASEMENT: 913 sq. ft, GARAGE: 414 sq. ft, PORCH: 112 sq. ft,
PATIO: 19 sq. ft

MEASUREMENTS CALCULATED BY V1Photos.com ARE DEEMED HIGHLY RELIABLE BUT NOT GUARANTEED.

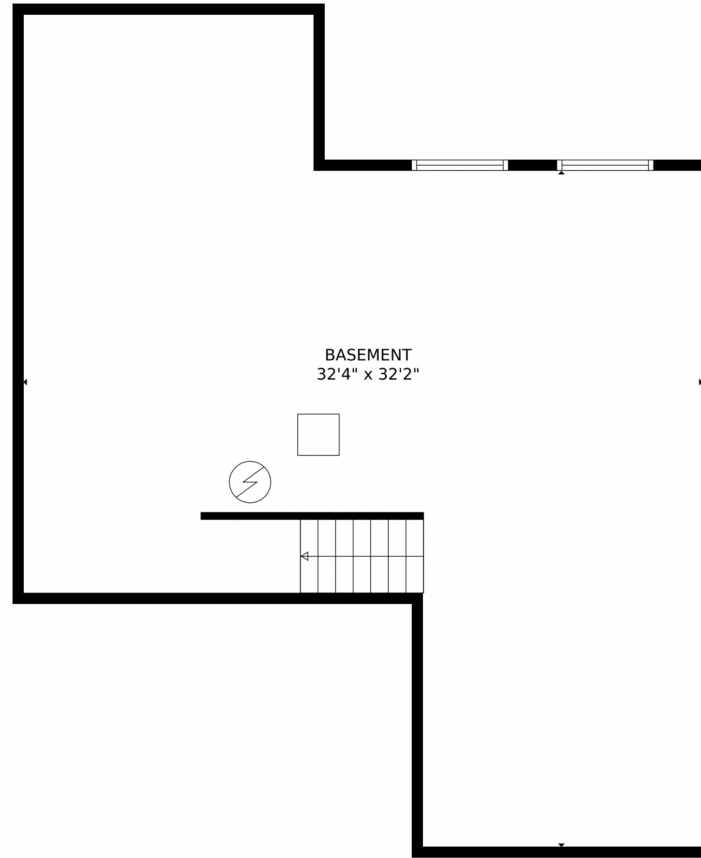


Disclaimer: Sizes and Dimensions are Approximate, Actual May Vary.



Terrence Lennon
720-858-8174
terrence@newagere.com





TOTAL: 2268 sq. ft
BELOW GROUND: 0 sq. ft, FLOOR 2: 991 sq. ft, FLOOR 3: 1277 sq. ft
EXCLUDED AREAS: BASEMENT: 913 sq. ft, GARAGE: 414 sq. ft, PORCH: 112 sq. ft,
PATIO: 19 sq. ft

MEASUREMENTS CALCULATED BY V1Photos.com ARE DEEMED HIGHLY RELIABLE BUT NOT GUARANTEED.



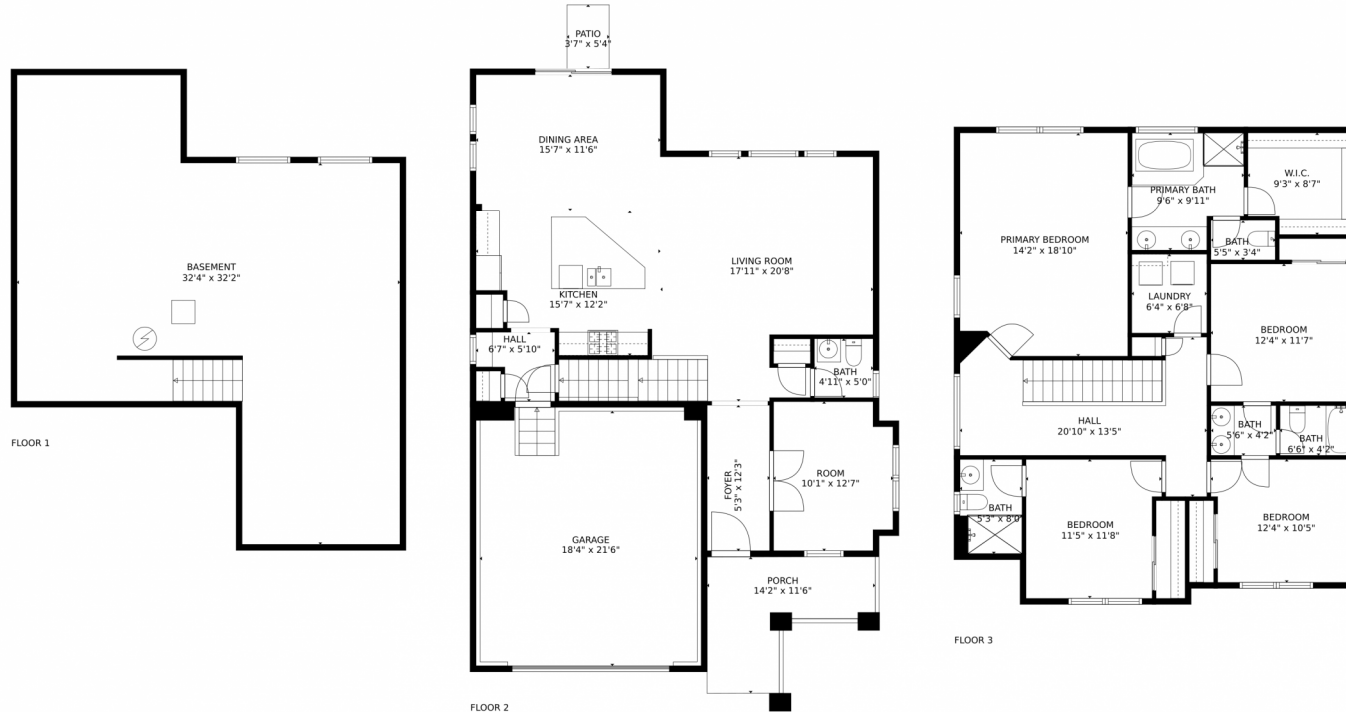
Disclaimer: Sizes and Dimensions are Approximate, Actual May Vary.



Terrence Lennon
720-858-8174
terrence@newagere.com



15049 Vienna Circle, Parker, CO 80134 – All Levels



TOTAL: 2268 sq. ft
BELOW GROUND: 0 sq. ft, FLOOR 2: 991 sq. ft, FLOOR 3: 1277 sq. ft
EXCLUDED AREAS: BASEMENT: 913 sq. ft, GARAGE: 414 sq. ft, PORCH: 112 sq. ft,
PATIO: 19 sq. ft

MEASUREMENTS CALCULATED BY V1Photos.com ARE DEEMED HIGHLY RELIABLE BUT NOT GUARANTEED.



Disclaimer: Sizes and Dimensions are Approximate, Actual May Vary.



Terrence Lennon
720-858-8174
terrence@newagere.com

