



2695 Osceola Street, Denver, CO 80212 - floorplan\_single\_2



 Single Family

 1896 SQFT

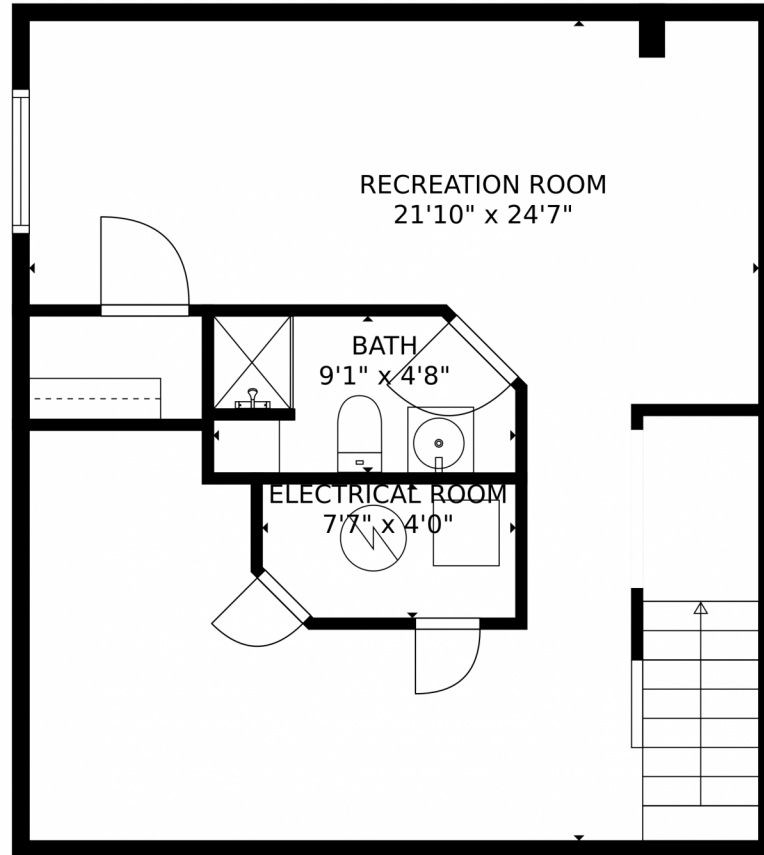
 3 Beds

 2/1 Baths



**Taylor Haas**  
 303-665-7368  
 taylorh@coloradorpm.com  
<https://www.coloradorpm.com/available-rental-properties-denver>





**TOTAL: 1700 sq. ft**  
BELOW GROUND: 508 sq. ft, FLOOR 2: 0 sq. ft, FLOOR 3: 597 sq. ft, FLOOR 4: 595 sq. ft  
EXCLUDED AREAS: ELECTRICAL ROOM: 29 sq. ft, GARAGE: 358 sq. ft, STORAGE: 87 sq. ft,  
PATIO: 1134 sq. ft, PORCH: 231 sq. ft, FIREPLACE: 11 sq. ft

MEASUREMENTS CALCULATED BY V1Photos.com ARE DEEMED HIGHLY RELIABLE BUT NOT GUARANTEED.

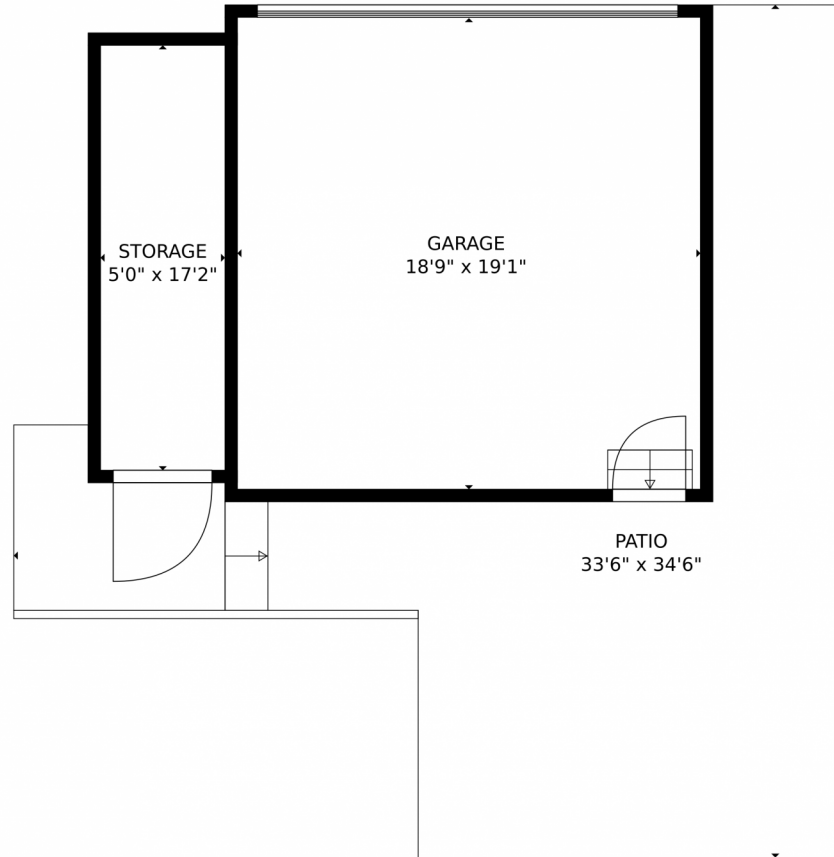


Disclaimer: Sizes and Dimensions are Approximate, Actual May Vary.



**Taylor Haas**  
303-665-7368  
taylorh@coloradorpm.com  
<https://www.coloradorpm.com/available-rental-properties-denver>





**TOTAL: 1700 sq. ft**  
BELOW GROUND: 508 sq. ft, FLOOR 2: 0 sq. ft, FLOOR 3: 597 sq. ft, FLOOR 4: 595 sq. ft  
EXCLUDED AREAS: ELECTRICAL ROOM: 29 sq. ft, GARAGE: 358 sq. ft, STORAGE: 87 sq. ft,  
PATIO: 1134 sq. ft, PORCH: 231 sq. ft, FIREPLACE: 11 sq. ft

MEASUREMENTS CALCULATED BY V1Photos.com ARE DEEMED HIGHLY RELIABLE BUT NOT GUARANTEED.

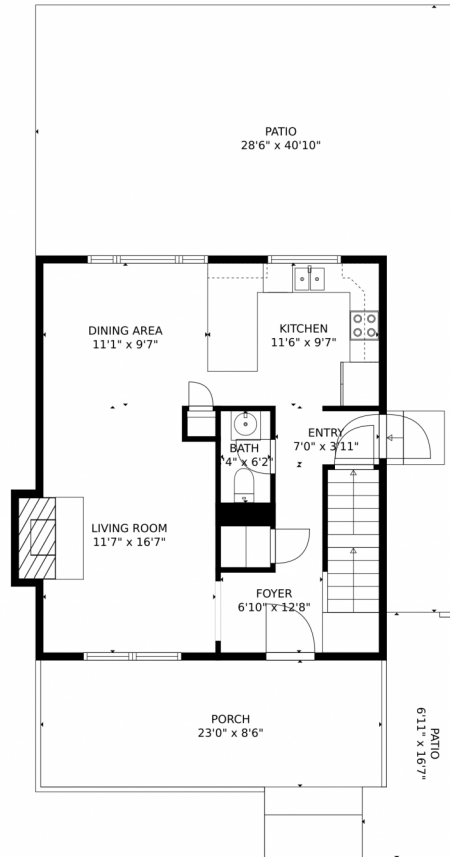


Disclaimer: Sizes and Dimensions are Approximate, Actual May Vary.



**Taylor Haas**  
303-665-7368  
taylorh@coloradorpm.com  
<https://www.coloradorpm.com/available-rental-properties-denver>





**TOTAL: 1700 sq. ft**  
BELOW GROUND: 508 sq. ft, FLOOR 2: 0 sq. ft, FLOOR 3: 597 sq. ft, FLOOR 4: 595 sq. ft  
EXCLUDED AREAS: ELECTRICAL ROOM: 29 sq. ft, GARAGE: 358 sq. ft, STORAGE: 87 sq. ft,  
PATIO: 1134 sq. ft, PORCH: 231 sq. ft, FIREPLACE: 11 sq. ft

MEASUREMENTS CALCULATED BY V1Photos.com ARE DEEMED HIGHLY RELIABLE BUT NOT GUARANTEED.

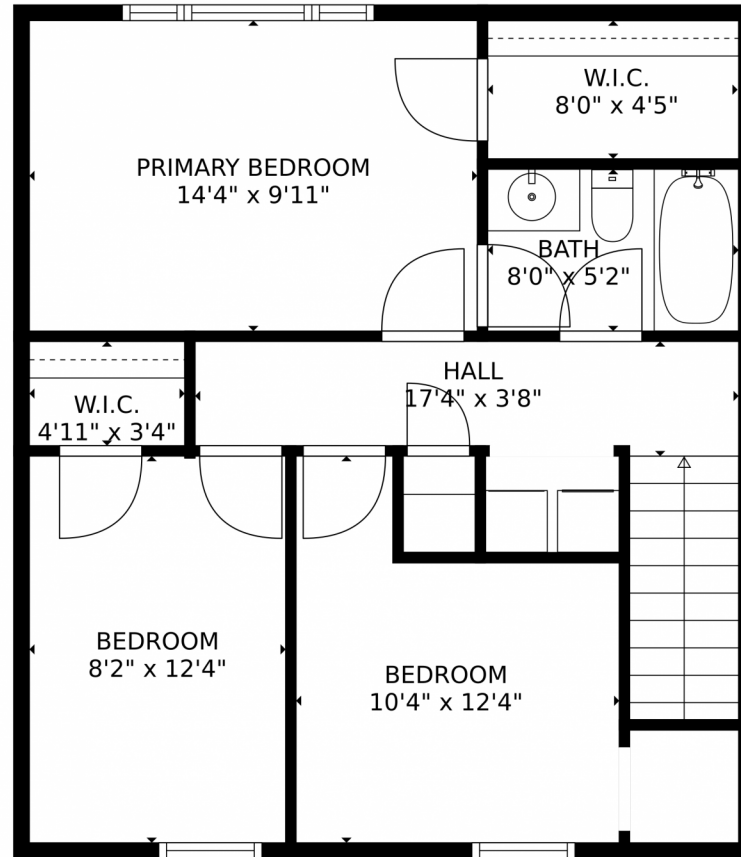


Disclaimer: Sizes and Dimensions are Approximate, Actual May Vary.



**Taylor Haas**  
303-665-7368  
taylorh@coloradorpm.com  
<https://www.coloradorpm.com/available-rental-properties-denv>





**TOTAL: 1700 sq. ft**  
BELOW GROUND: 508 sq. ft, FLOOR 2: 0 sq. ft, FLOOR 3: 597 sq. ft, FLOOR 4: 595 sq. ft  
EXCLUDED AREAS: ELECTRICAL ROOM: 29 sq. ft, GARAGE: 358 sq. ft, STORAGE: 87 sq. ft,  
PATIO: 1134 sq. ft, PORCH: 231 sq. ft, FIREPLACE: 11 sq. ft

MEASUREMENTS CALCULATED BY V1Photos.com ARE DEEMED HIGHLY RELIABLE BUT NOT GUARANTEED.



Disclaimer: Sizes and Dimensions are Approximate, Actual May Vary.



**Taylor Haas**

303-665-7368

taylorh@coloradorpm.com

<https://www.coloradorpm.com/available-rental-properties-denver>



Scan code  
for more  
property  
details





**TOTAL: 1700 sq. ft**  
BELOW GROUND: 508 sq. ft, FLOOR 2: 0 sq. ft, FLOOR 3: 597 sq. ft, FLOOR 4: 595 sq. ft  
EXCLUDED AREAS: ELECTRICAL ROOM: 29 sq. ft, GARAGE: 358 sq. ft, STORAGE: 87 sq. ft,  
PATIO: 1134 sq. ft, PORCH: 231 sq. ft, FIREPLACE: 11 sq. ft

MEASUREMENTS CALCULATED BY V1Photos.com ARE DEEMED HIGHLY RELIABLE BUT NOT GUARANTEED.



Disclaimer: Sizes and Dimensions are Approximate, Actual May Vary.



**Taylor Haas**

303-665-7368

taylorh@coloradopr.com

<https://www.coloradopr.com/available-rental-properties-denver>



Scan code  
for more  
property  
details

