



17236 East Wyoming Drive, Aurora, CO 80017 - floorplan_all_0



 Single Family

 2005 SQFT

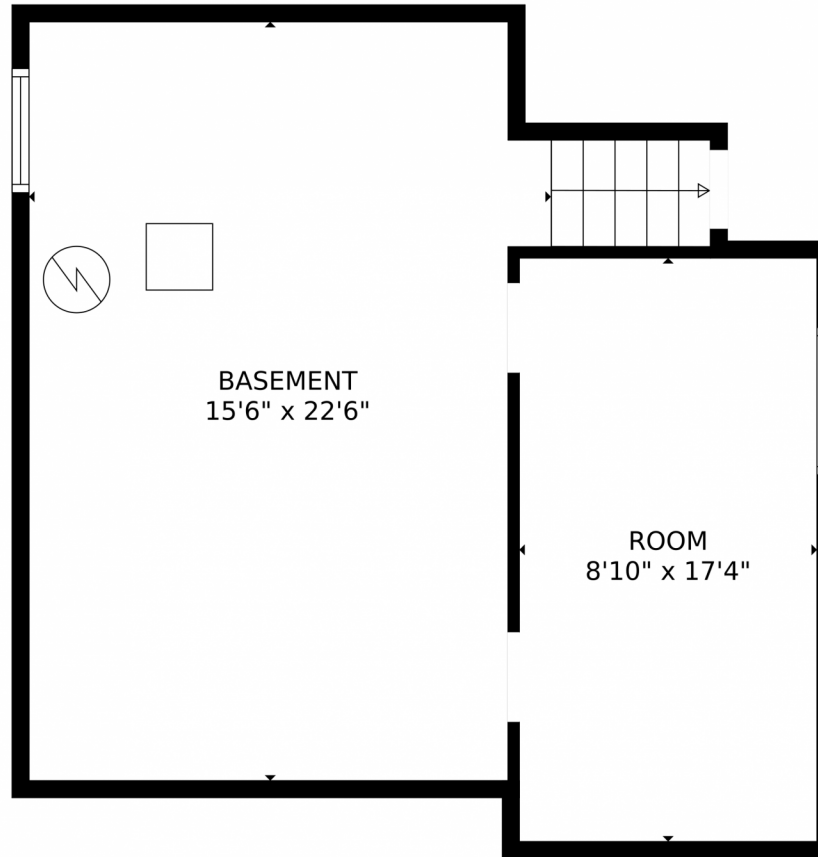
 3 Beds

 2 Baths



Taylor Haas
303-665-7368
taylorh@coloradorpm.com
<https://www.coloradorpm.com/available-rental-properties-denver>





TOTAL: 1335 sq. ft
BELOW GROUND: 0 sq. ft, FLOOR 2: 542 sq. ft, FLOOR 3: 793 sq. ft
EXCLUDED AREAS: ROOM: 160 sq. ft, BASEMENT: 338 sq. ft, GARAGE: 375 sq. ft,
PATIO: 299 sq. ft, PORCH: 140 sq. ft
MEASUREMENTS CALCULATED BY V1Photos.com ARE DEEMED HIGHLY RELIABLE BUT NOT GUARANTEED.

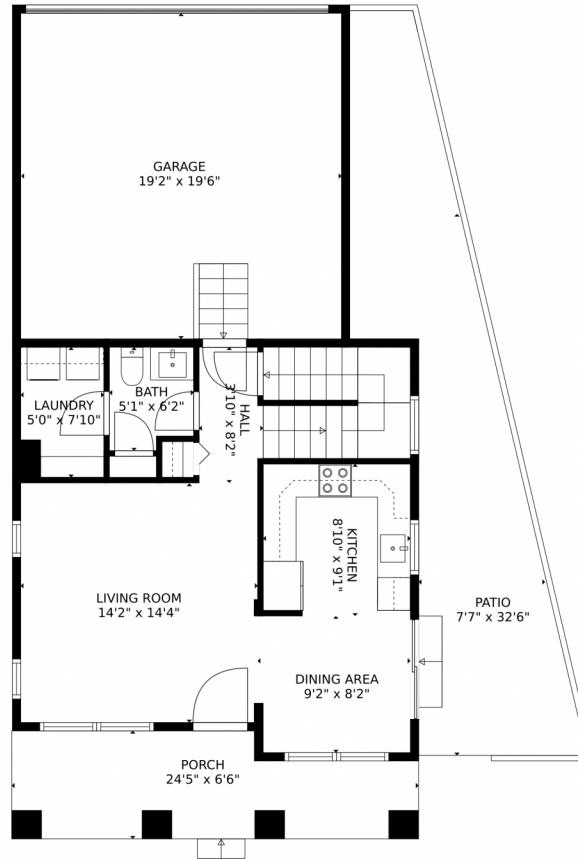


Disclaimer: Sizes and Dimensions are Approximate, Actual May Vary.



Taylor Haas
303-665-7368
taylorh@coloradorpm.com
<https://www.coloradorpm.com/available-rental-properties-denver>





TOTAL: 1335 sq. ft
BELOW GROUND: 0 sq. ft, FLOOR 2: 542 sq. ft, FLOOR 3: 793 sq. ft
EXCLUDED AREAS: ROOM: 160 sq. ft, BASEMENT: 338 sq. ft, GARAGE: 375 sq. ft,
PATIO: 299 sq. ft, PORCH: 140 sq. ft

MEASUREMENTS CALCULATED BY V1Photos.com ARE DEEMED HIGHLY RELIABLE BUT NOT GUARANTEED.



Disclaimer: Sizes and Dimensions are Approximate, Actual May Vary.



Taylor Haas

303-665-7368

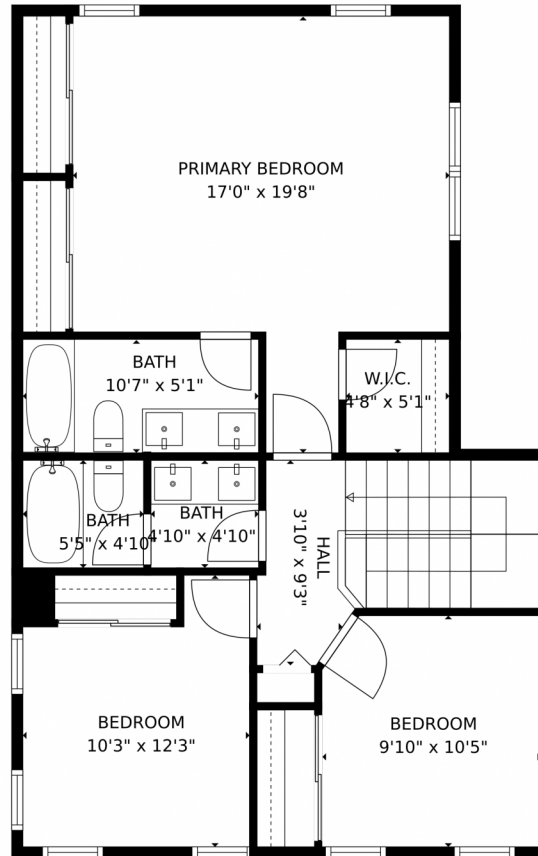
taylorh@coloradorpm.com

<https://www.coloradorpm.com/available-rental-properties-denver>



Scan code
for more
property
details





TOTAL: 1335 sq. ft
BELOW GROUND: 0 sq. ft, FLOOR 2: 542 sq. ft, FLOOR 3: 793 sq. ft
EXCLUDED AREAS: ROOM: 160 sq. ft, BASEMENT: 338 sq. ft, GARAGE: 375 sq. ft,
PATIO: 299 sq. ft, PORCH: 140 sq. ft
MEASUREMENTS CALCULATED BY V1Photos.com ARE DEEMED HIGHLY RELIABLE BUT NOT GUARANTEED.

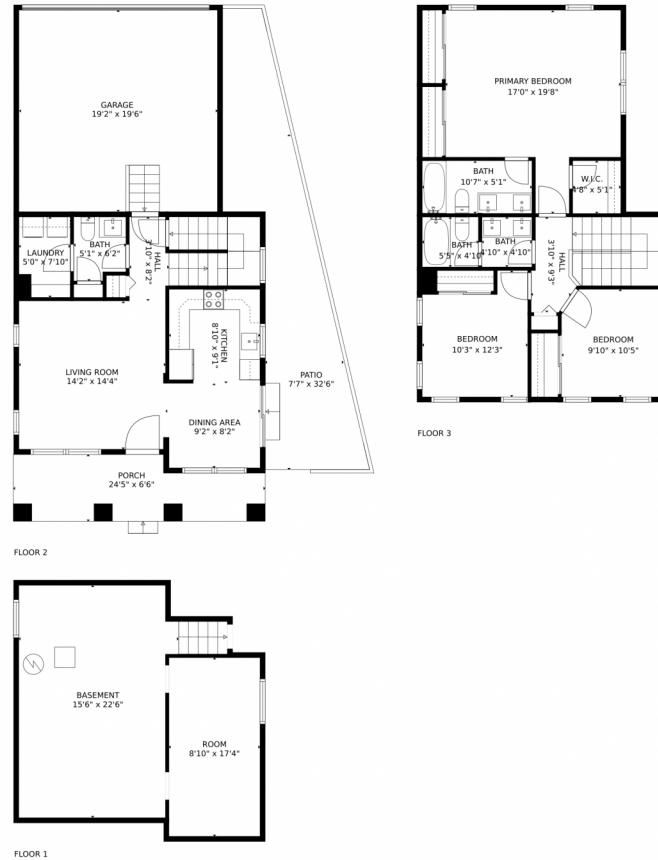


Disclaimer: Sizes and Dimensions are Approximate, Actual May Vary.



Taylor Haas
303-665-7368
taylorh@coloradorpm.com
<https://www.coloradorpm.com/available-rental-properties-denver>





TOTAL: 1335 sq. ft
BELOW GROUND: 0 sq. ft, FLOOR 2: 542 sq. ft, FLOOR 3: 793 sq. ft
EXCLUDED AREAS: ROOM: 160 sq. ft, BASEMENT: 338 sq. ft, GARAGE: 375 sq. ft,
PATIO: 299 sq. ft, PORCH: 140 sq. ft

MEASUREMENTS CALCULATED BY V1Photos.com ARE DEEMED HIGHLY RELIABLE BUT NOT GUARANTEED.



Disclaimer: Sizes and Dimensions are Approximate, Actual May Vary.



Taylor Haas
303-665-7368
taylorh@coloradorpm.com
<https://www.coloradorpm.com/available-rental-properties-denver>



Scan code
for more
property
details

