



2260 Keota Lane  
Superior, CO 80027

PRICE  
\$1,050,000



2260 Keota Lane, Superior, CO 80027 - floorplan\_single\_1



Single Family



3156 SQFT



4 Beds



3/1 Baths



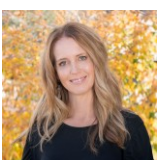
3 Car



0.16 Acre

## PROPERTY DETAILS

Stunning Rock Creek Home. Newly refinished wood floors throughout. Living room with bay window, formal dining room. Updated kitchen with granite counters, S/S appliances, walk-in pantry. Vaulted ceilings in family room with fireplace. Main level study and 3/4 bath. 4 bedrooms upstairs. Primary with attached bathroom and walk-in closet. Finished basement with rec room. Mudroom, deck, 3-car garage. Close to open space, parks, and school. Updated baths and lighting. Move-in ready.



**Terri Ellerington**

303-929-8116

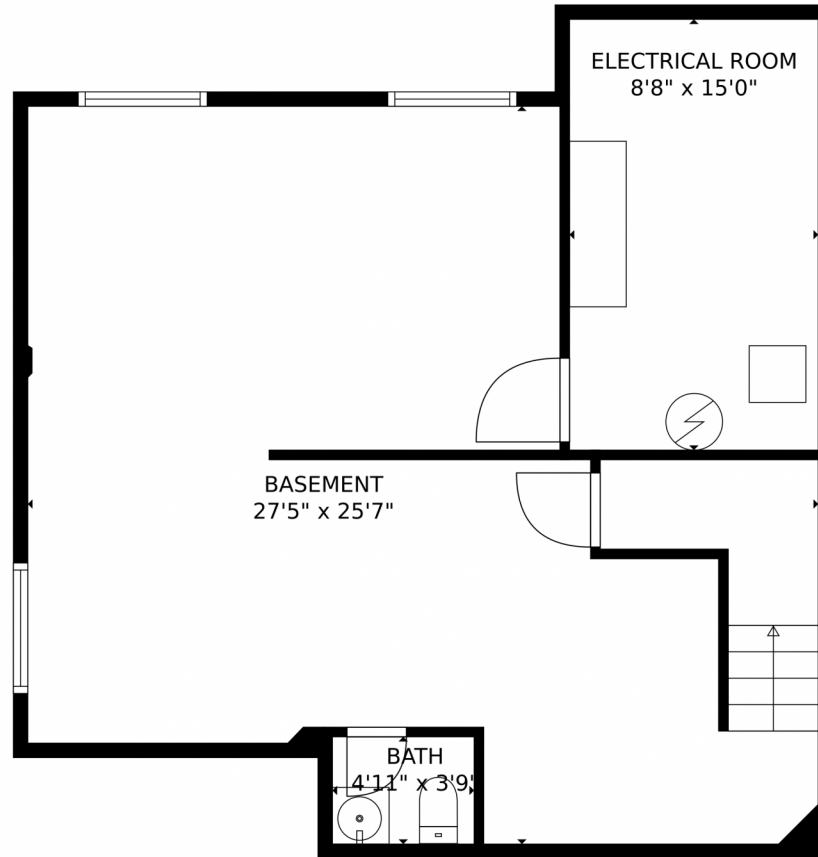
terri@elevated-team.com

<https://www.remax.com/real-estate-agents/terri-ellerington-louisville-co/10205130>



Scan code  
for more  
property  
details





**TOTAL: 2933 sq. ft**  
BELOW GROUND: 563 sq. ft, FLOOR 2: 1266 sq. ft, FLOOR 3: 1104 sq. ft  
EXCLUDED AREAS: ELECTRICAL ROOM: 129 sq. ft, GARAGE: 513 sq. ft, DECK: 273 sq. ft,  
PORCH: 33 sq. ft, OPEN TO BELOW: 25 sq. ft

MEASUREMENTS CALCULATED BY V1Photos.com ARE DEEMED HIGHLY RELIABLE BUT NOT GUARANTEED.



Disclaimer: Sizes and Dimensions are Approximate, Actual May Vary.



**Terri Ellerington**

303-929-8116

terri@elevated-team.com

<https://www.remax.com/real-estate-agents/terri-ellerington-louisville-co/102051301>



Scan code  
for more  
property  
details





**TOTAL: 2933 sq. ft**  
BELOW GROUND: 563 sq. ft, FLOOR 2: 1266 sq. ft, FLOOR 3: 1104 sq. ft  
EXCLUDED AREAS: ELECTRICAL ROOM: 129 sq. ft, GARAGE: 513 sq. ft, DECK: 273 sq. ft,  
PORCH: 33 sq. ft, OPEN TO BELOW: 25 sq. ft

MEASUREMENTS CALCULATED BY V1Photos.com ARE DEEMED HIGHLY RELIABLE BUT NOT GUARANTEED.



Disclaimer: Sizes and Dimensions are Approximate, Actual May Vary.

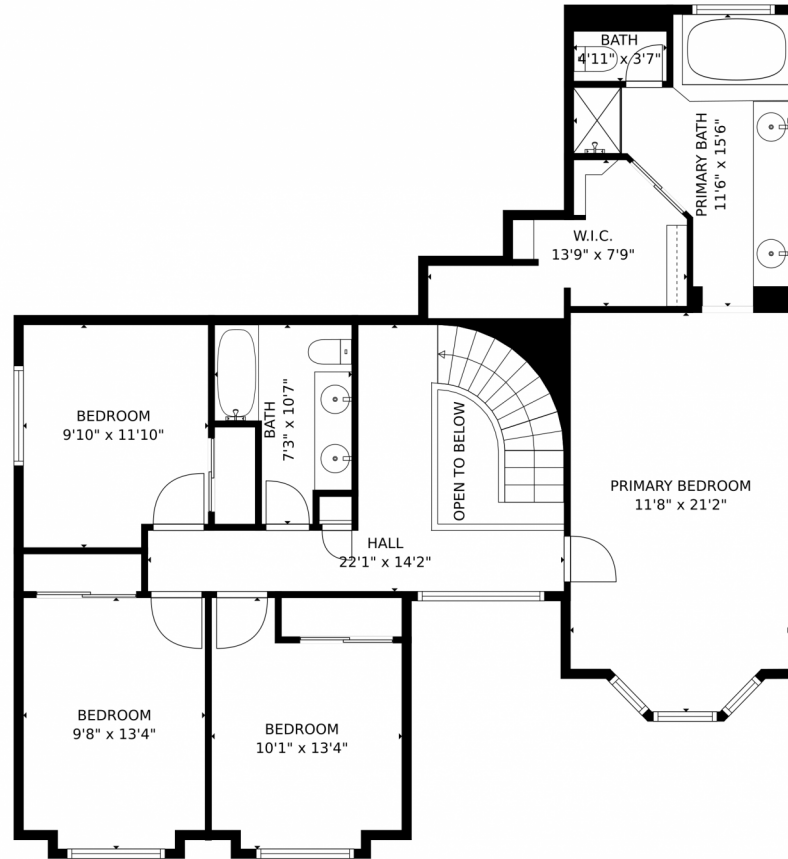


**Terri Ellerington**  
303-929-8116  
terri@elevated-team.com  
<https://www.remax.com/real-estate-agents/terri-ellerington-louisville-co/102051301>



Scan code  
for more  
property  
details





**TOTAL: 2933 sq. ft**  
BELOW GROUND: 563 sq. ft, FLOOR 2: 1266 sq. ft, FLOOR 3: 1104 sq. ft  
EXCLUDED AREAS: ELECTRICAL ROOM: 129 sq. ft, GARAGE: 513 sq. ft, DECK: 273 sq. ft,  
PORCH: 33 sq. ft, OPEN TO BELOW: 25 sq. ft

MEASUREMENTS CALCULATED BY V1Photos.com ARE DEEMED HIGHLY RELIABLE BUT NOT GUARANTEED.



Disclaimer: Sizes and Dimensions are Approximate, Actual May Vary.



**Terri Ellerington**

303-929-8116

terri@elevated-team.com

<https://www.remax.com/real-estate-agents/terri-ellerington-louisville-co/102051301>



Scan code  
for more  
property  
details







**TOTAL: 2933 sq. ft**  
BELOW GROUND: 563 sq. ft, FLOOR 2: 1266 sq. ft, FLOOR 3: 1104 sq. ft  
EXCLUDED AREAS: ELECTRICAL ROOM: 129 sq. ft, GARAGE: 513 sq. ft, DECK: 273 sq. ft,  
PORCH: 33 sq. ft, OPEN TO BELOW: 25 sq. ft

MEASUREMENTS CALCULATED BY V1Photos.com ARE DEEMED HIGHLY RELIABLE BUT NOT GUARANTEED.



Disclaimer: Sizes and Dimensions are Approximate, Actual May Vary.



**Terri Ellerington**  
303-929-8116  
terri@elevated-team.com  
<https://www.remax.com/real-estate-agents/terri-ellerington-louisville-co/102051301>



Scan code  
for more  
property  
details

