

COMPASS

920 Saddleback Drive
Evergreen, CO 80439



920 Saddleback Drive, Evergreen, CO 80439 - All Levels



Single Family



3376 SQFT



3 Beds



2/1 Baths



2 Car



2.85 Acre

PROPERTY DETAILS

SPECTACULAR VIEWS OF THE CONTINENTAL DIVIDE. Wrap around decks on all levels. 2 ROOFTOP TERRACES. MODERN FINISHES. ON ALMOST 3 ACRES. CLOSE TO MAJOR SKI AREAS. Next to trails, parks, shops, restaurants, and all other amenities. Quick access to I-70. Every reason to call this place home!

COMPASS

Clare Day

720-341-7456

homes@clare-day.com

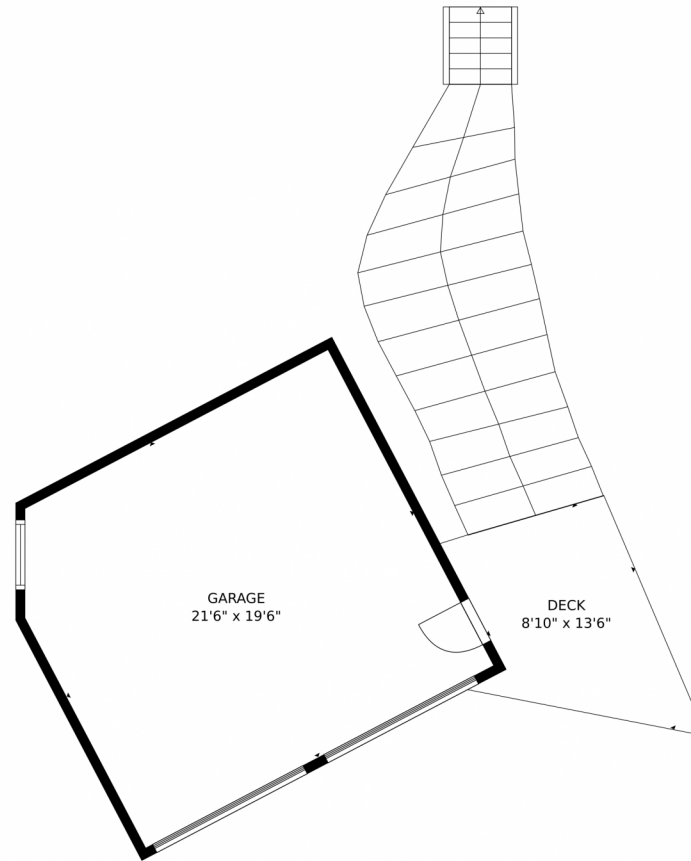
<https://www.clareday.com/>



Scan code
for more
property
details



920 Saddleback Drive, Evergreen, CO 80439 – Entrance Level



TOTAL: 2168 sq. ft
BELOW GROUND: 0 sq. ft, FLOOR 2: 491 sq. ft, FLOOR 3: 887 sq. ft, FLOOR 4: 790 sq. ft
EXCLUDED AREAS: GARAGE: 412 sq. ft, DECK: 447 sq. ft, PORCH: 290 sq. ft,
FIREPLACE: 13 sq. ft, TERRACE: 503 sq. ft

MEASUREMENTS CALCULATED BY V1Photos.com ARE DEEMED HIGHLY RELIABLE BUT NOT GUARANTEED.



Disclaimer: Sizes and Dimensions are Approximate, Actual May Vary.

COMPASS

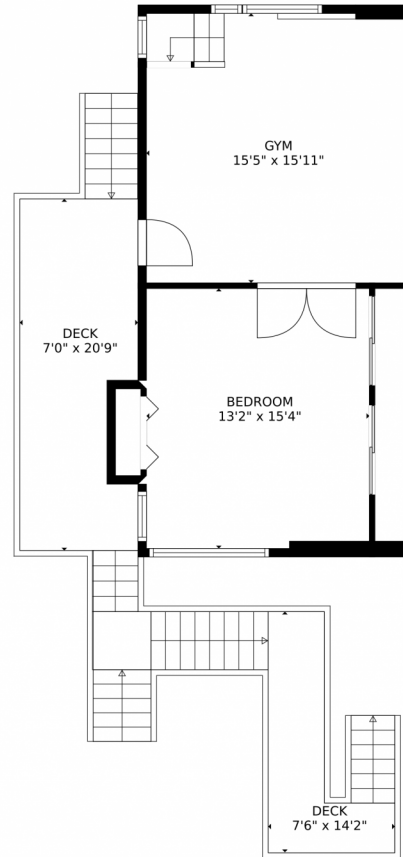
Clare Day
720-341-7456
homes@clare-day.com
<https://www.clareday.com/>



Scan code
for more
property
details



920 Saddleback Drive, Evergreen, CO 80439 — Lower Level



TOTAL: 2168 sq. ft
BELOW GROUND: 0 sq. ft, FLOOR 2: 491 sq. ft, FLOOR 3: 887 sq. ft, FLOOR 4: 790 sq. ft
EXCLUDED AREAS: GARAGE: 412 sq. ft, DECK: 447 sq. ft, PORCH: 290 sq. ft,
FIREPLACE: 13 sq. ft, TERRACE: 503 sq. ft

MEASUREMENTS CALCULATED BY V1Photos.com ARE DEEMED HIGHLY RELIABLE BUT NOT GUARANTEED.



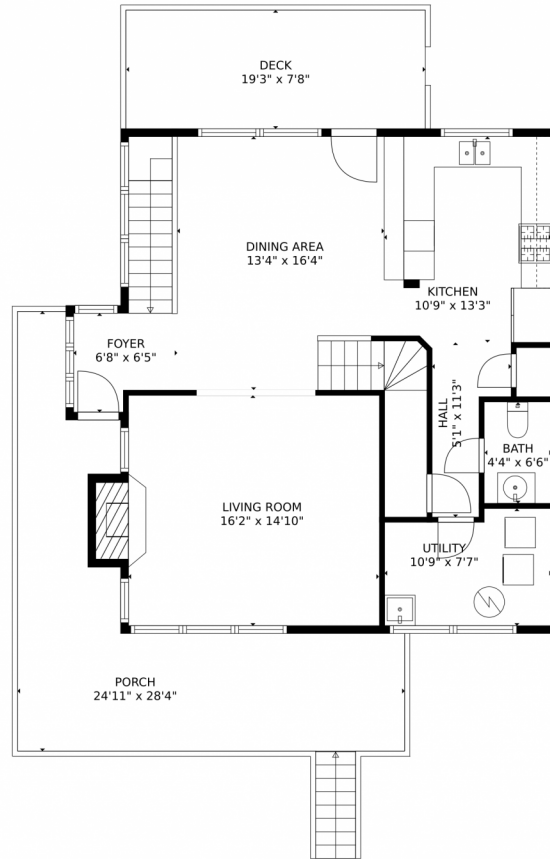
Disclaimer: Sizes and Dimensions are Approximate, Actual May Vary.

COMPASS
Clare Day
720-341-7456
homes@clare-day.com
<https://www.clareday.com/>



Scan code
for more
property
details

920 Saddleback Drive, Evergreen, CO 80439 – Main Level



TOTAL: 2168 sq. ft
BELOW GROUND: 0 sq. ft, FLOOR 2: 491 sq. ft, FLOOR 3: 887 sq. ft, FLOOR 4: 790 sq. ft
EXCLUDED AREAS: GARAGE: 412 sq. ft, DECK: 447 sq. ft, PORCH: 290 sq. ft,
FIREPLACE: 13 sq. ft, TERRACE: 503 sq. ft

MEASUREMENTS CALCULATED BY V1Photos.com ARE DEEMED HIGHLY RELIABLE BUT NOT GUARANTEED.



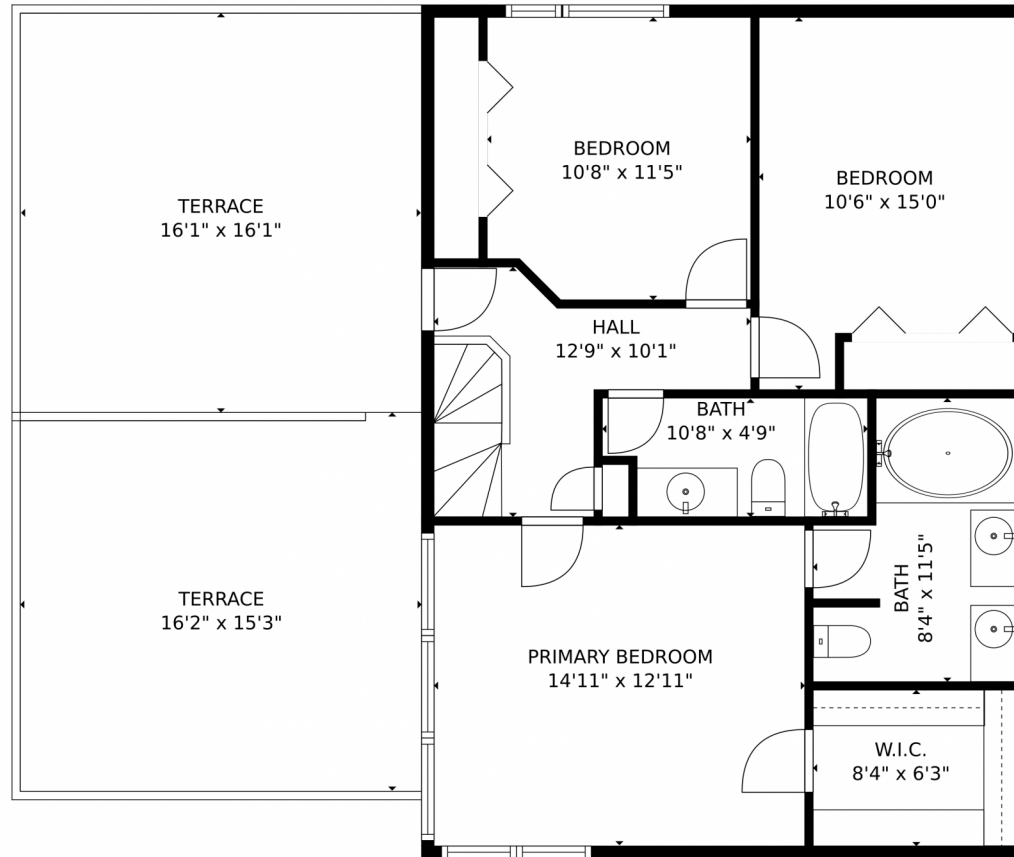
Disclaimer: Sizes and Dimensions are Approximate, Actual May Vary.

COMPASS
Clare Day
720-341-7456
homes@clare-day.com
<https://www.clareday.com/>

Scan code
for more
property
details



920 Saddleback Drive, Evergreen, CO 80439 – Upper Level



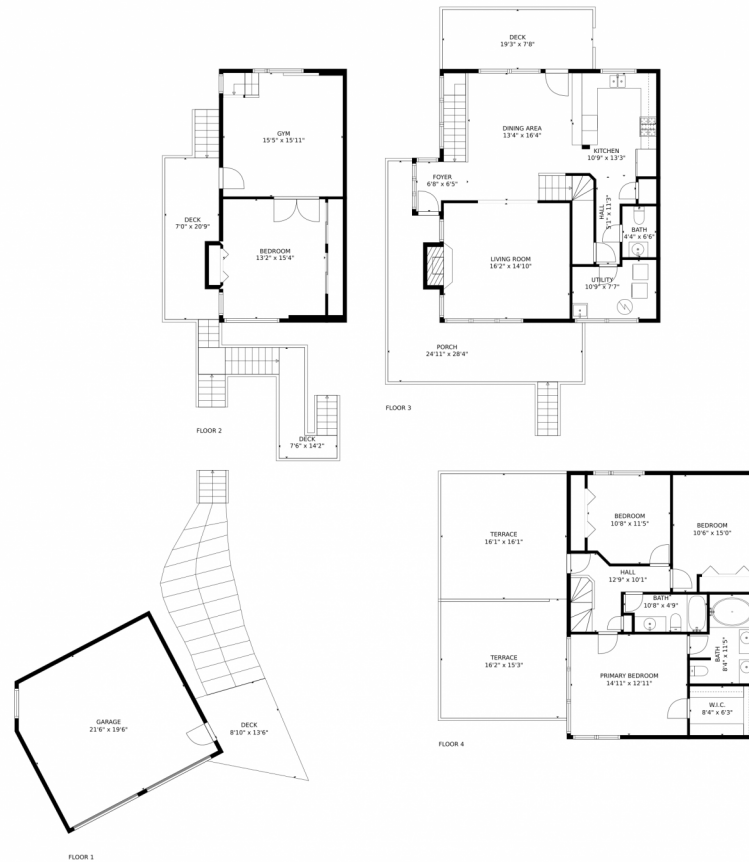
TOTAL: 2168 sq. ft
BELOW GROUND: 0 sq. ft, FLOOR 2: 491 sq. ft, FLOOR 3: 887 sq. ft, FLOOR 4: 790 sq. ft
EXCLUDED AREAS: GARAGE: 412 sq. ft, DECK: 447 sq. ft, PORCH: 290 sq. ft,
FIREPLACE: 13 sq. ft, TERRACE: 503 sq. ft

MEASUREMENTS CALCULATED BY V1Photos.com ARE DEEMED HIGHLY RELIABLE BUT NOT GUARANTEED.



Disclaimer: Sizes and Dimensions are Approximate, Actual May Vary.

920 Saddleback Drive, Evergreen, CO 80439 — All Levels



TOTAL: 2168 sq. ft
BELOW GROUND: 0 sq. ft, FLOOR 2: 491 sq. ft, FLOOR 3: 887 sq. ft, FLOOR 4: 790 sq. ft
EXCLUDED AREAS: GARAGE: 412 sq. ft, DECK: 447 sq. ft, PORCH: 290 sq. ft,
FIREPLACE: 13 sq. ft, TERRACE: 503 sq. ft

MEASUREMENTS CALCULATED BY V1Photos.com ARE DEEMED HIGHLY RELIABLE BUT NOT GUARANTEED.



Disclaimer: Sizes and Dimensions are Approximate, Actual May Vary.

