



6108 West 27th Street  
Greeley, CO 80634



Single Family



2470 SQFT



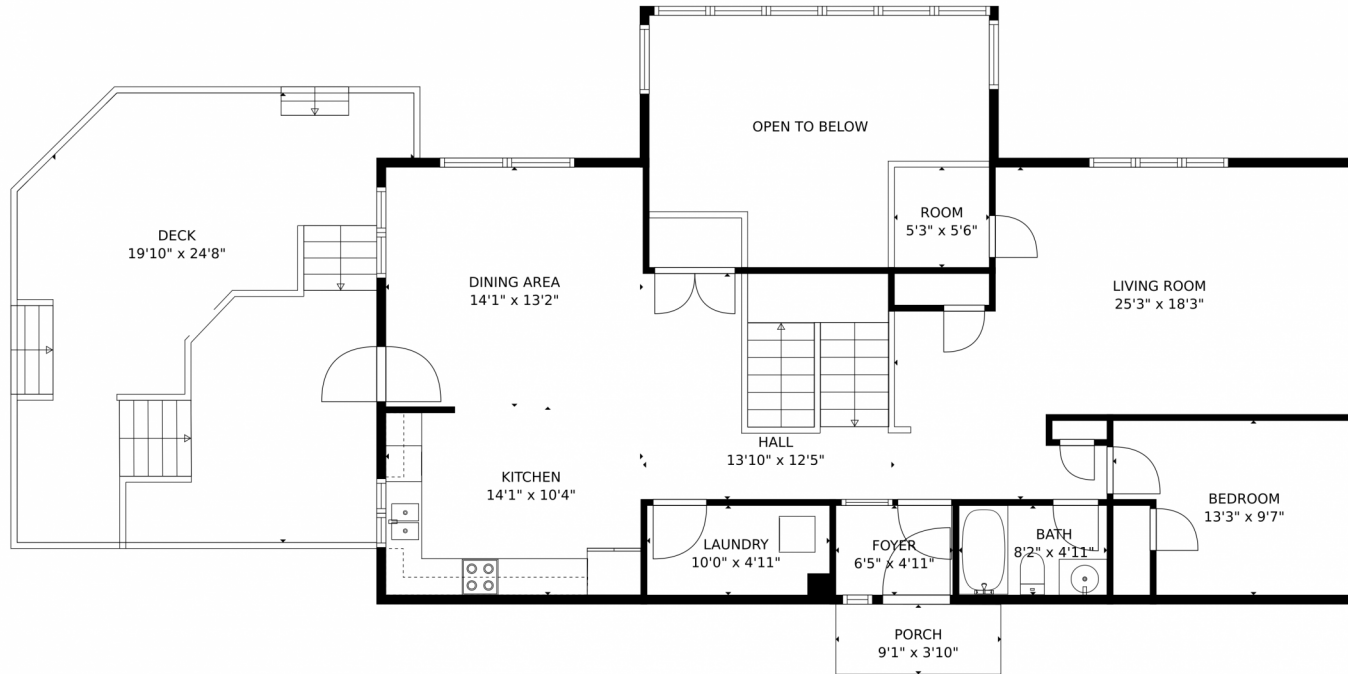
**Haley Hart**  
720-938-1722  
Haley@IntegrityG.com



Scan code  
for more  
property  
details



# 6108 West 27th Street, Greeley, CO 80634 – Main Level



**TOTAL: 2464 sq. ft**  
BELOW GROUND: 1268 sq. ft, FLOOR 2: 1196 sq. ft  
EXCLUDED AREAS: GARAGE: 558 sq. ft, STORAGE: 31 sq. ft, LOW CEILING: 40 sq. ft,  
PATIO: 169 sq. ft, OPEN TO BELOW: 210 sq. ft, DECK: 480 sq. ft,  
PORCH: 35 sq. ft

MEASUREMENTS CALCULATED BY V1Photos.com ARE DEEMED HIGHLY RELIABLE BUT NOT GUARANTEED.



Disclaimer: Sizes and Dimensions are Approximate, Actual May Vary.



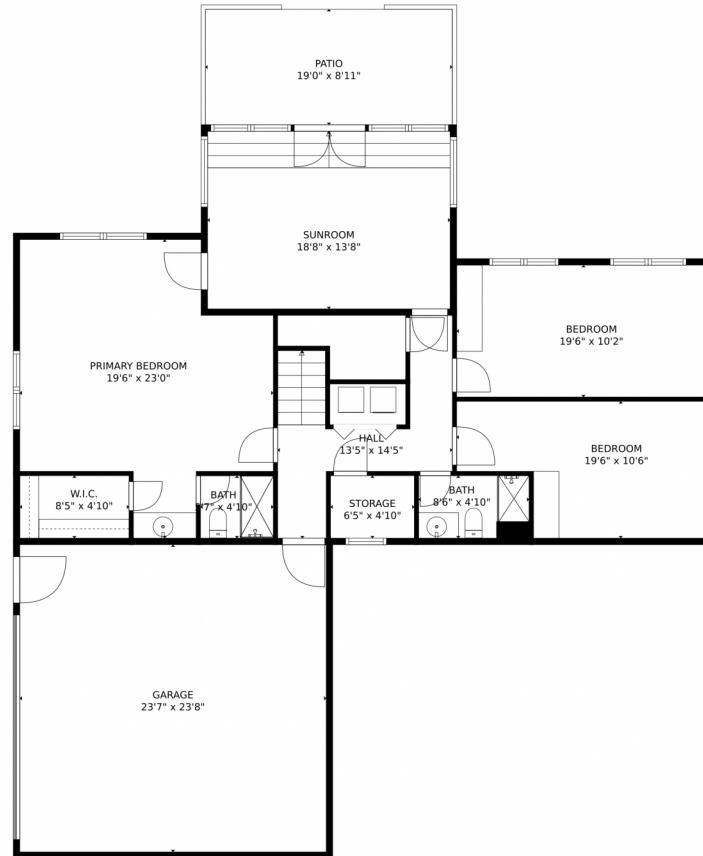
**Haley Hart**  
720-938-1722  
Haley@IntegrityG.com



Scan code  
for more  
property  
details



# 6108 West 27th Street, Greeley, CO 80634 – Lower Level



**TOTAL: 2464 sq. ft**  
BELOW GROUND: 1268 sq. ft, FLOOR 2: 1196 sq. ft  
EXCLUDED AREAS: GARAGE: 558 sq. ft, STORAGE: 31 sq. ft, LOW CEILING: 40 sq. ft,  
PATIO: 169 sq. ft, OPEN TO BELOW: 210 sq. ft, DECK: 480 sq. ft,  
PORCH: 35 sq. ft

MEASUREMENTS CALCULATED BY V1Photos.com ARE DEEMED HIGHLY RELIABLE BUT NOT GUARANTEED.



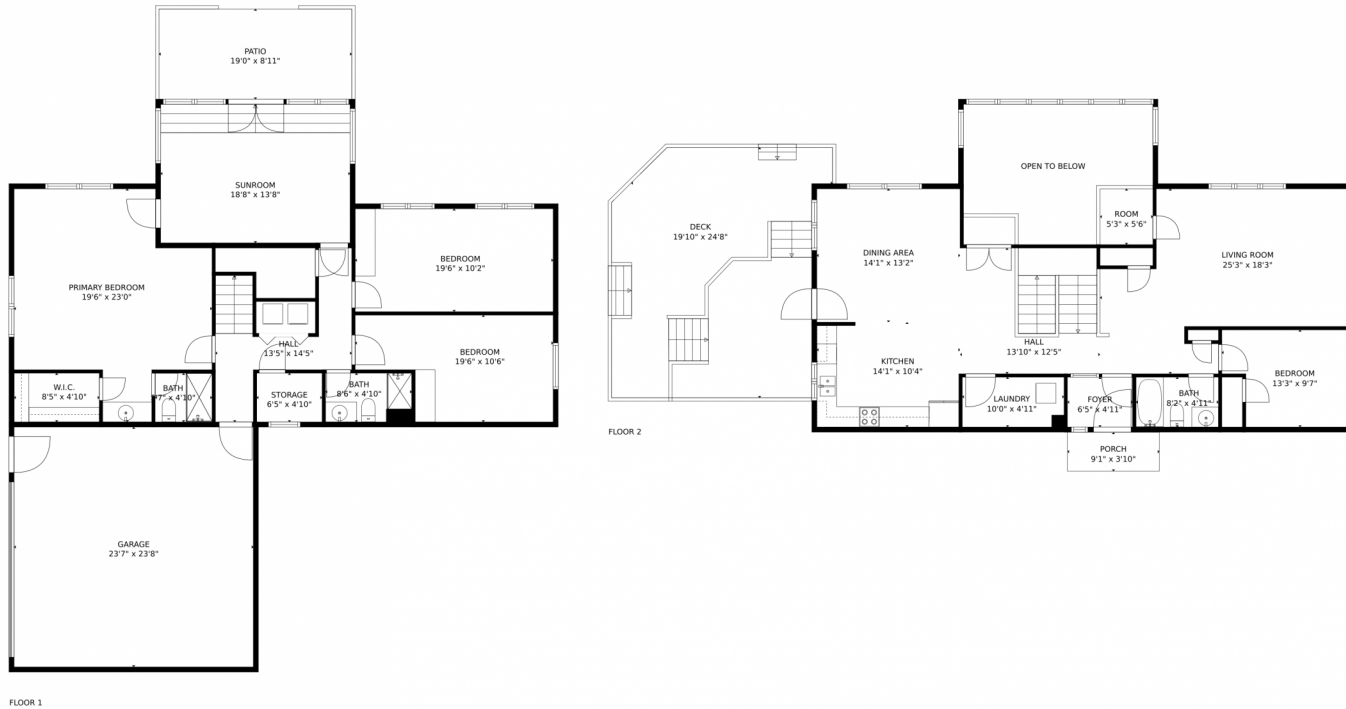
Disclaimer: Sizes and Dimensions are Approximate, Actual May Vary.



**Haley Hart**  
720-938-1722  
Haley@IntegrityG.com



# 6108 West 27th Street, Greeley, CO 80634 — All Levels



**TOTAL: 2464 sq. ft**  
BELOW GROUND: 1268 sq. ft, FLOOR 2: 1196 sq. ft  
EXCLUDED AREAS: GARAGE: 558 sq. ft, STORAGE: 31 sq. ft, LOW CEILING: 40 sq. ft,  
PATIO: 169 sq. ft, OPEN TO BELOW: 210 sq. ft, DECK: 480 sq. ft,  
PORCH: 35 sq. ft

MEASUREMENTS CALCULATED BY V1Photos.com ARE DEEMED HIGHLY RELIABLE BUT NOT GUARANTEED.

Disclaimer: Sizes and Dimensions are Approximate, Actual May Vary.



**Haley Hart**  
720-938-1722  
Haley@IntegrityG.com



Scan code  
for more  
property  
details

