



2249 Glenarm Place, Denver, CO 80205 - floorplan_single_2



 Townhouse

 1365 SQFT

 2 Beds

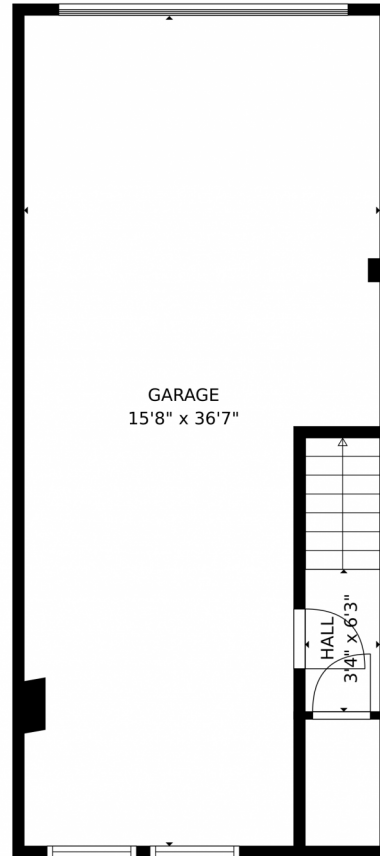
 2/1 Baths



Taylor Haas
303-665-7368
taylorh@coloradorpm.com
<https://www.coloradorpm.com/available-rental-properties-denver>



2249 Glenarm Place, Denver, CO 80205 – Garage



TOTAL: 1307 sq. ft
BELOW GROUND: 59 sq. ft, FLOOR 2: 594 sq. ft, BELOW GROUND: 594 sq. ft, FLOOR 4: 60 sq. ft
EXCLUDED AREAS: GARAGE: 504 sq. ft, TERRACE: 518 sq. ft
MEASUREMENTS CALCULATED BY V1Photos.com ARE DEEMED HIGHLY RELIABLE BUT NOT GUARANTEED.



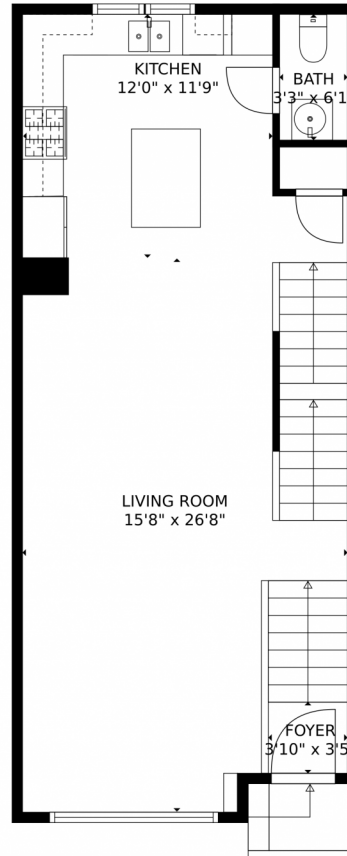
Disclaimer: Sizes and Dimensions are Approximate, Actual May Vary.



Taylor Haas
303-665-7368
taylorh@coloradorpm.com
<https://www.coloradorpm.com/available-rental-properties-denv>



2249 Glenarm Place, Denver, CO 80205 – Main Level



TOTAL: 1307 sq. ft
BELOW GROUND: 59 sq. ft, FLOOR 2: 594 sq. ft, BELOW GROUND: 594 sq. ft, FLOOR 4: 60 sq. ft
EXCLUDED AREAS: GARAGE: 504 sq. ft, TERRACE: 518 sq. ft
MEASUREMENTS CALCULATED BY V1Photos.com ARE DEEMED HIGHLY RELIABLE BUT NOT GUARANTEED.



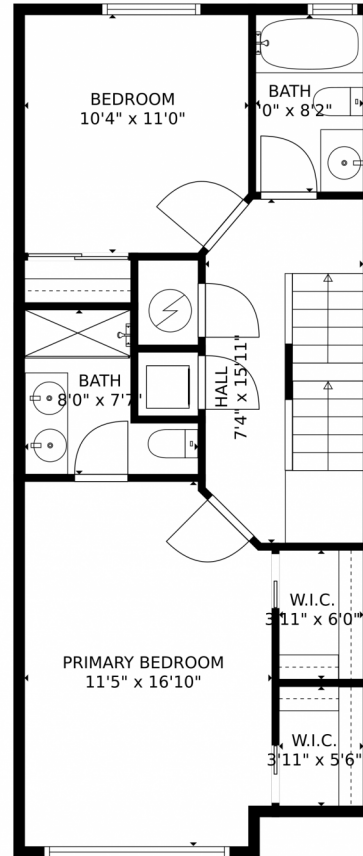
Disclaimer: Sizes and Dimensions are Approximate, Actual May Vary.



Taylor Haas
303-665-7368
taylorh@coloradorpm.com
<https://www.coloradorpm.com/available-rental-properties-denver>



2249 Glenarm Place, Denver, CO 80205 – 3rd Level



TOTAL: 1307 sq. ft
BELOW GROUND: 59 sq. ft, FLOOR 2: 594 sq. ft, BELOW GROUND: 594 sq. ft, FLOOR 4: 60 sq. ft
EXCLUDED AREAS: GARAGE: 504 sq. ft, TERRACE: 518 sq. ft
MEASUREMENTS CALCULATED BY V1Photos.com ARE DEEMED HIGHLY RELIABLE BUT NOT GUARANTEED.

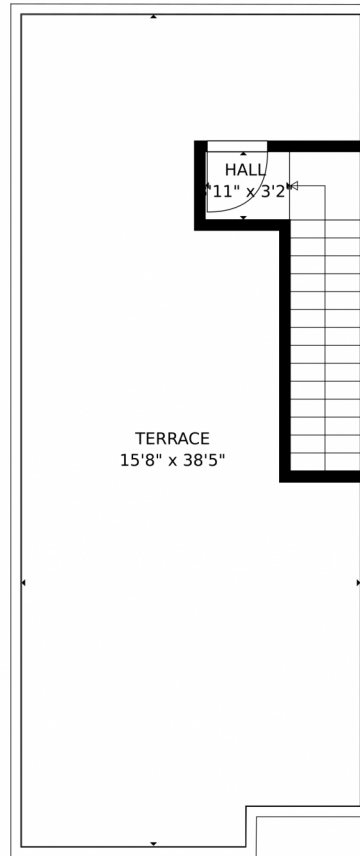


Disclaimer: Sizes and Dimensions are Approximate, Actual May Vary.



Taylor Haas
303-665-7368
taylorh@coloradorpm.com
<https://www.coloradorpm.com/available-rental-properties-denver>





TOTAL: 1307 sq. ft
BELOW GROUND: 59 sq. ft, FLOOR 2: 594 sq. ft, BELOW GROUND: 594 sq. ft, FLOOR 4: 60 sq. ft
EXCLUDED AREAS: GARAGE: 504 sq. ft, TERRACE: 518 sq. ft
MEASUREMENTS CALCULATED BY V1Photos.com ARE DEEMED HIGHLY RELIABLE BUT NOT GUARANTEED.



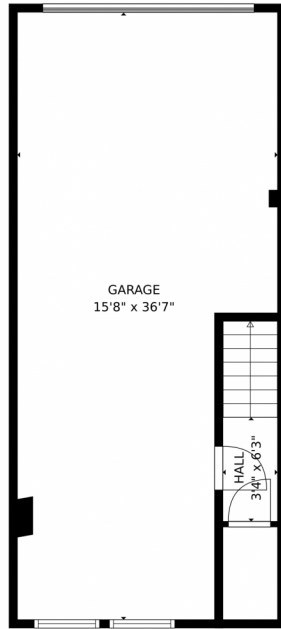
Disclaimer: Sizes and Dimensions are Approximate, Actual May Vary.



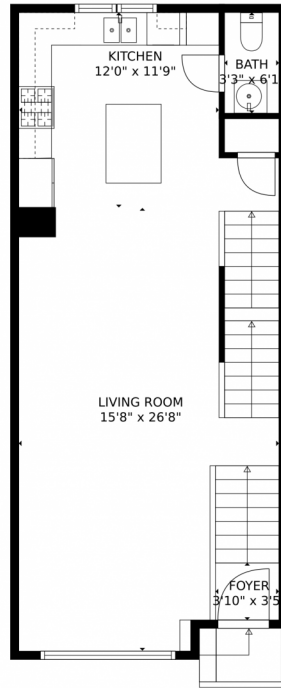
Taylor Haas
303-665-7368
taylorh@coloradorpm.com
<https://www.coloradorpm.com/available-rental-properties-denv>



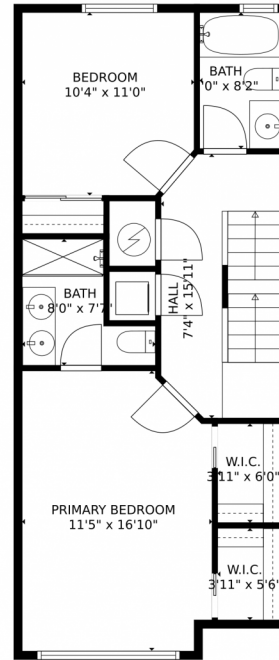
2249 Glenarm Place, Denver, CO 80205 – All Floors



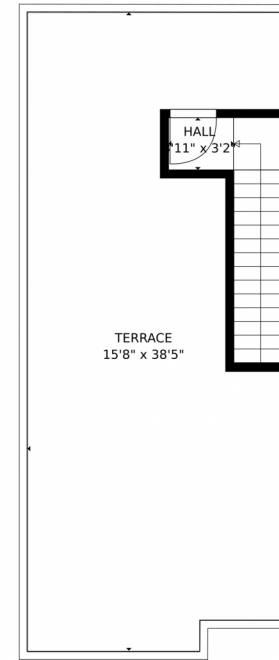
FLOOR 1



FLOOR 2



FLOOR 3



FLOOR 4

TOTAL: 1306 sq. ft
BELOW GROUND: 59 sq. ft, FLOOR 2: 593 sq. ft, BELOW GROUND: 594 sq. ft, FLOOR 4: 60 sq. ft
EXCLUDED AREAS: GARAGE: 504 sq. ft, TERRACE: 518 sq. ft
MEASUREMENTS CALCULATED BY V1Photos.com ARE DEEMED HIGHLY RELIABLE BUT NOT GUARANTEED.



Disclaimer: Sizes and Dimensions are Approximate, Actual May Vary.



Taylor Haas
303-665-7368
taylorh@coloradorm.com
<https://www.coloradorm.com/available-rental-properties-denver>

