

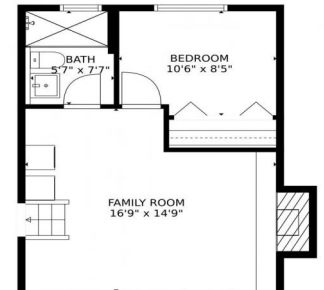


4436 South Zinnia Street
 Morrison, CO 80465
 COMMUNITY: Friendly Hills

MLS # 8323675
 PRICE \$575,000



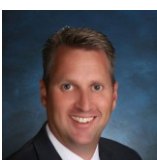
4436 South Zinnia Street, Morrison, CO 80465 - floorplan_single_0



- Single Family
- 1300 SQFT
- 3 Beds
- 2 Baths
- 2 Car
- 0.17 Acre

PROPERTY DETAILS

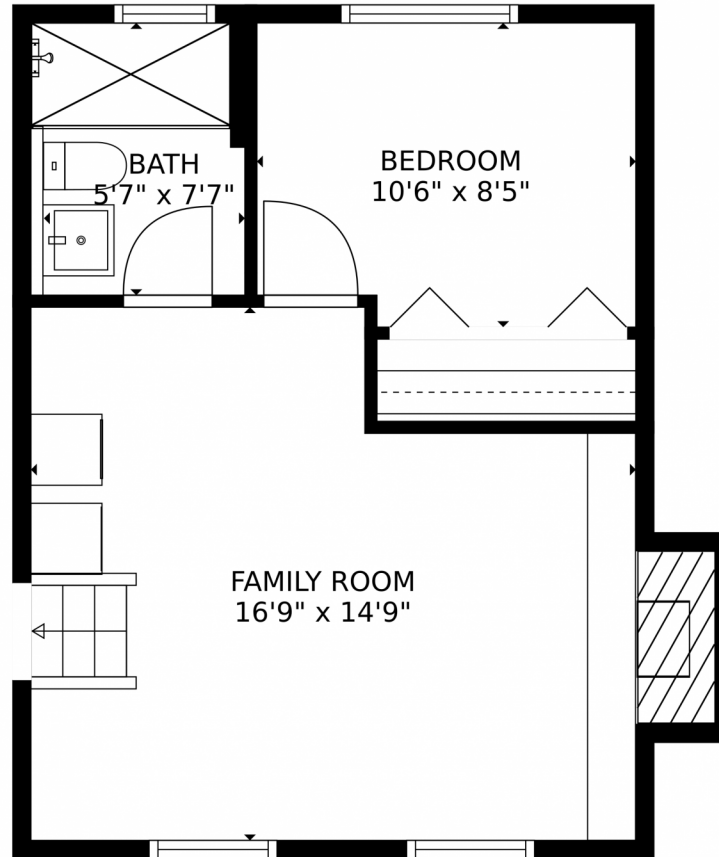
Stunning 3 bed, 2 bath remodel with attached 2-car garage. Open floorplan with gorgeous kitchen, family room, and vinyl flooring. Upper level has 2 large bedrooms and remodeled bath. Lower level has family room, 3rd bedroom, and remodeled bath. Updates include newer windows, on demand water heater, and high-speed internet. Exterior has insulated workshop and private backyard. Appliances included. Truly a home to behold.



Greg Dach
 303-525-9006
 gregdach@remax.net

Scan code for more property details





TOTAL: 1212 sq. ft
BELOW GROUND: 383 sq. ft, FLOOR 2: 367 sq. ft, FLOOR 3: 462 sq. ft
EXCLUDED AREAS: FIREPLACE: 13 sq. ft, GARAGE: 455 sq. ft, STORAGE: 203 sq. ft,
PATIO: 511 sq. ft, PORCH: 101 sq. ft
MEASUREMENTS CALCULATED BY V1Photos.com ARE DEEMED HIGHLY RELIABLE BUT NOT GUARANTEED.

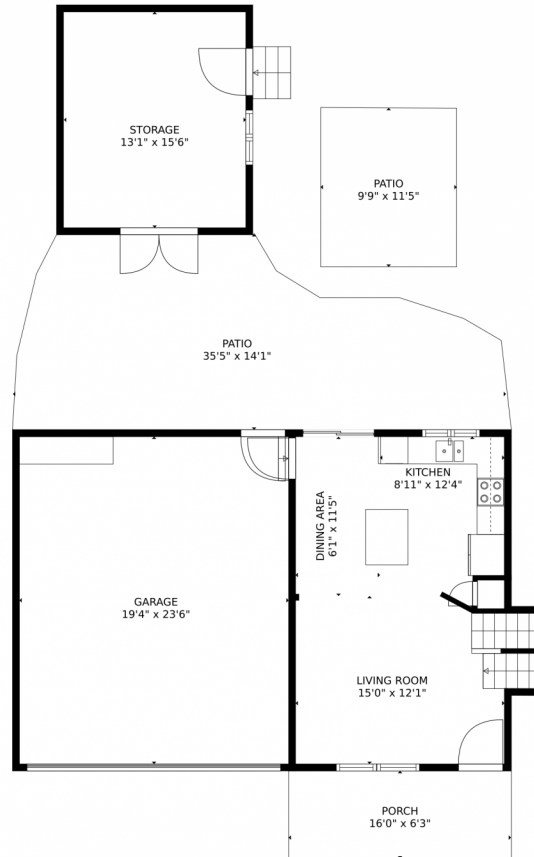


Disclaimer: Sizes and Dimensions are Approximate, Actual May Vary.



Greg Dach
303-525-9006
gregdach@remax.net





TOTAL: 1212 sq. ft
BELOW GROUND: 383 sq. ft, FLOOR 2: 367 sq. ft, FLOOR 3: 462 sq. ft
EXCLUDED AREAS: FIREPLACE: 13 sq. ft, GARAGE: 455 sq. ft, STORAGE: 203 sq. ft,
PATIO: 511 sq. ft, PORCH: 101 sq. ft
MEASUREMENTS CALCULATED BY V1Photos.com ARE DEEMED HIGHLY RELIABLE BUT NOT GUARANTEED.

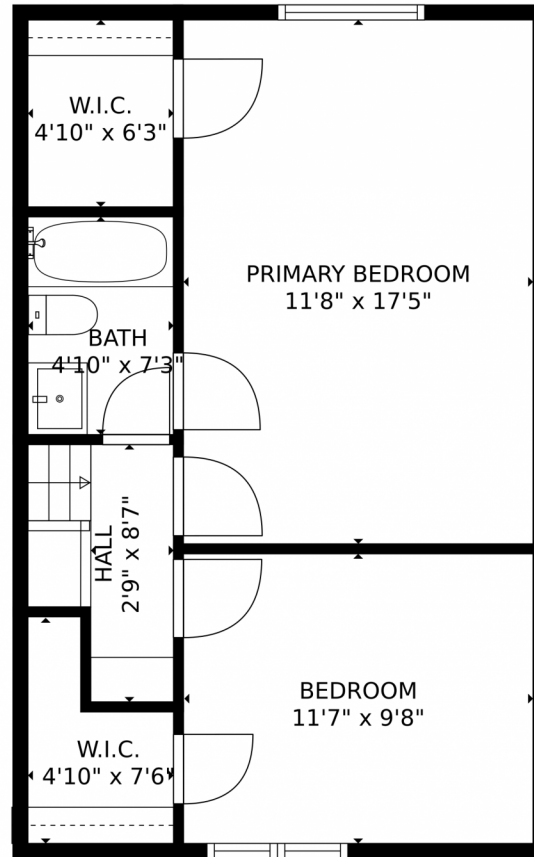


Disclaimer: Sizes and Dimensions are Approximate, Actual May Vary.



Greg Dach
303-525-9006
gregdach@remax.net





TOTAL: 1212 sq. ft
BELOW GROUND: 383 sq. ft, FLOOR 2: 367 sq. ft, FLOOR 3: 462 sq. ft
EXCLUDED AREAS: FIREPLACE: 13 sq. ft, GARAGE: 455 sq. ft, STORAGE: 203 sq. ft,
PATIO: 511 sq. ft, PORCH: 101 sq. ft
MEASUREMENTS CALCULATED BY V1Photos.com ARE DEEMED HIGHLY RELIABLE BUT NOT GUARANTEED.

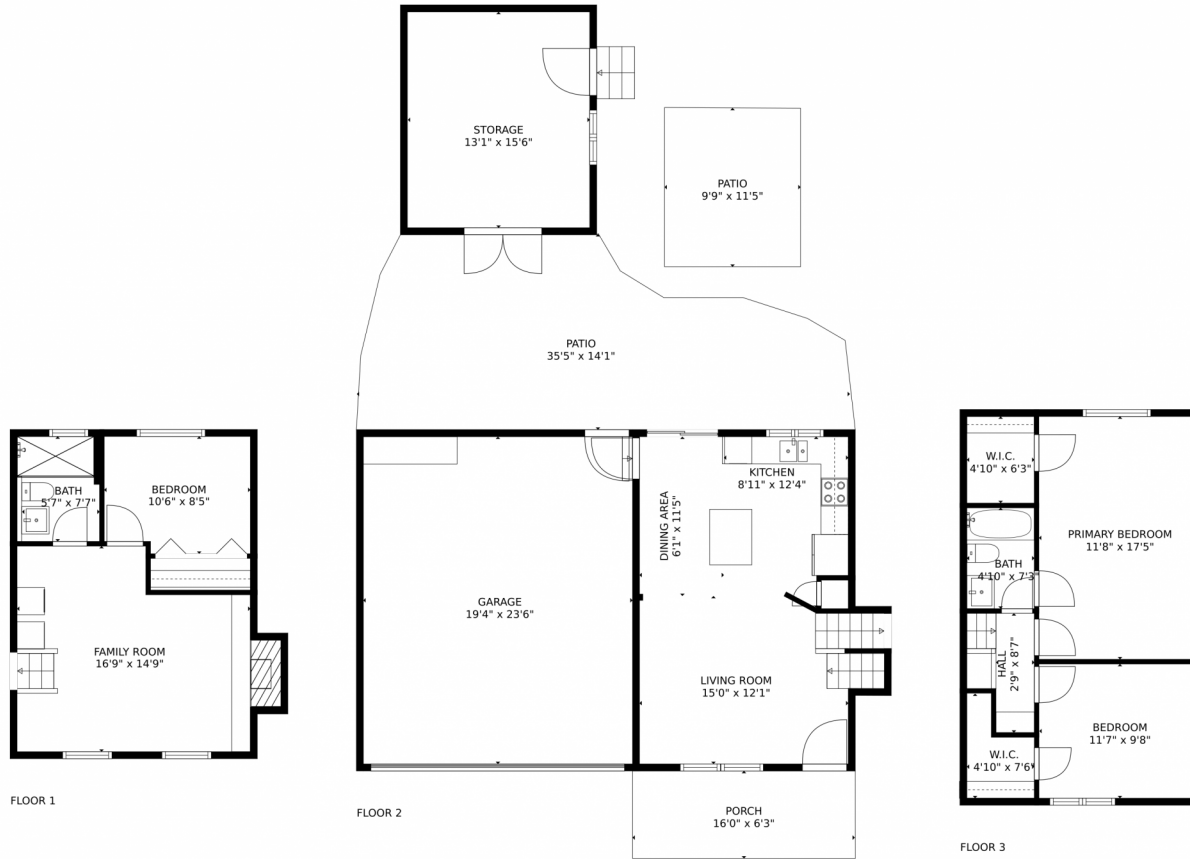


Disclaimer: Sizes and Dimensions are Approximate, Actual May Vary.



Greg Dach
303-525-9006
gregdach@remax.net





TOTAL: 1212 sq. ft
BELOW GROUND: 383 sq. ft, FLOOR 2: 367 sq. ft, FLOOR 3: 462 sq. ft
EXCLUDED AREAS: FIREPLACE: 13 sq. ft, GARAGE: 455 sq. ft, STORAGE: 203 sq. ft,
PATIO: 511 sq. ft, PORCH: 101 sq. ft

MEASUREMENTS CALCULATED BY V1Photos.COM ARE DEEMED HIGHLY RELIABLE BUT NOT GUARANTEED.



Disclaimer: Sizes and Dimensions are Approximate, Actual May Vary.



Greg Dach
303-525-9006
gregdach@remax.net

