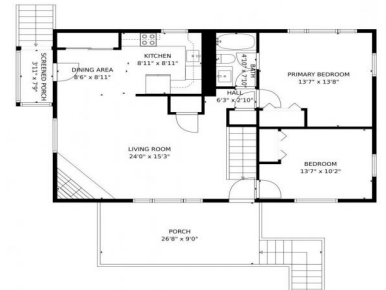




30673 Kings Valley Drive, Conifer, CO 80433 - floorplan_single_1



Single Family



1636 SQFT



2 Beds



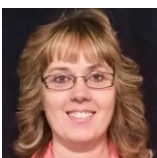
1/1 Baths



1 Car



0.32 Acre

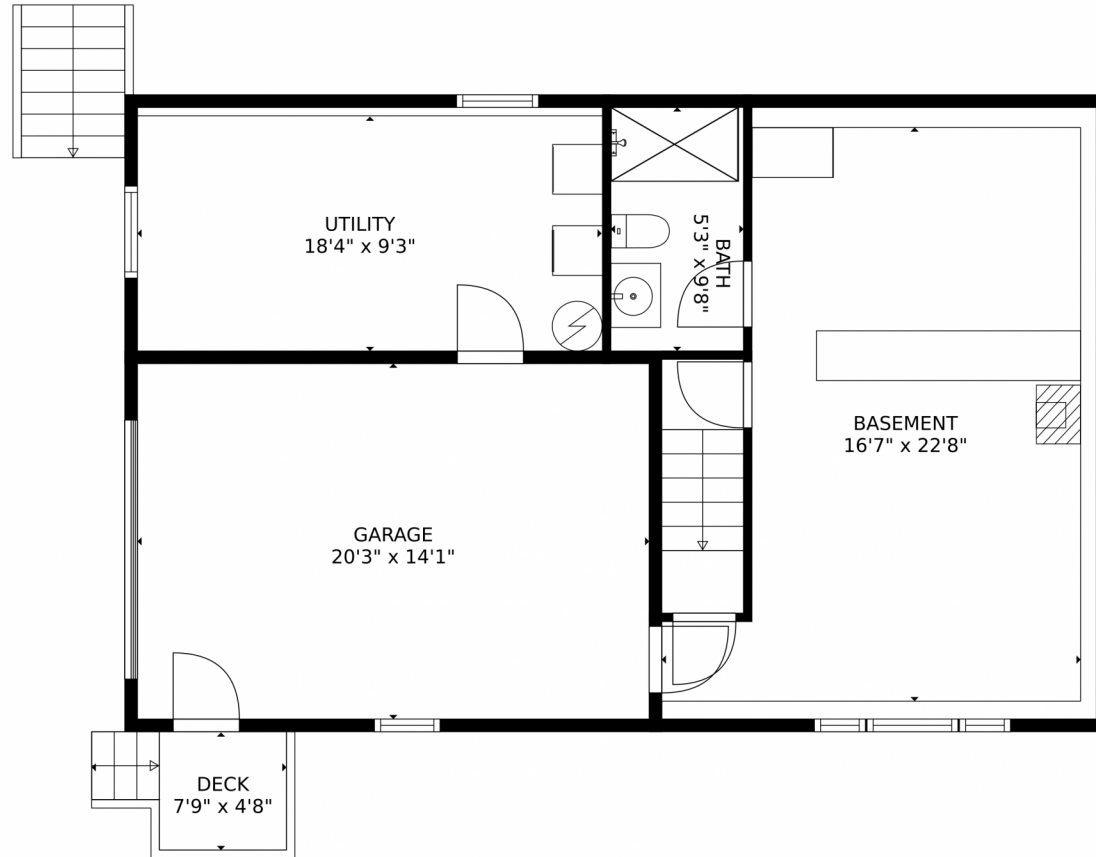


Cathy Ruger
303-503-6547
realtorcathyruger@gmail.com



Scan code
for more
property
details

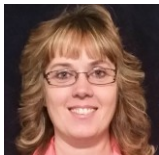




TOTAL: 958 sq. ft
BELOW GROUND: 38 sq. ft, FLOOR 2: 920 sq. ft
EXCLUDED AREAS: BATH: 58 sq. ft, DECK: 31 sq. ft, GARAGE: 285 sq. ft,
BASEMENT: 344 sq. ft, UTILITY: 177 sq. ft, PORCH: 216 sq. ft,
SCREENED PORCH: 30 sq. ft

MEASUREMENTS CALCULATED BY V1Photos.com ARE DEEMED HIGHLY RELIABLE BUT NOT GUARANTEED.

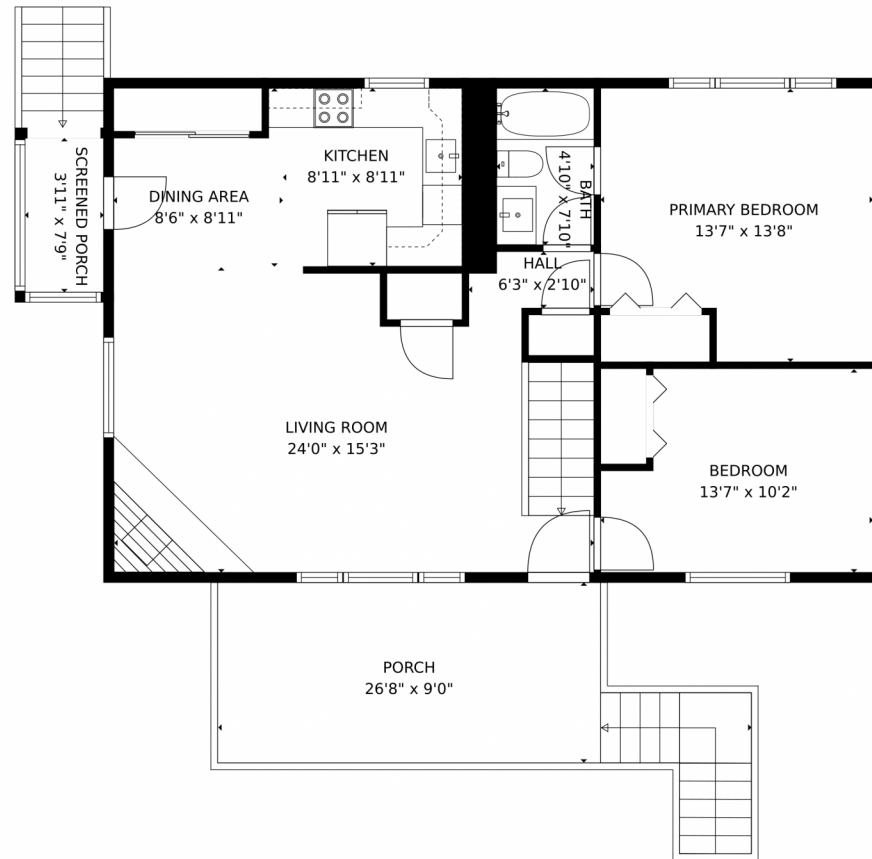
Disclaimer: Sizes and Dimensions are Approximate, Actual May Vary.



Cathy Ruger
303-503-6547
realtorcathyruher@gmail.com



Scan code
for more
property
details



TOTAL: 958 sq. ft
BELOW GROUND: 38 sq. ft, FLOOR 2: 920 sq. ft
EXCLUDED AREAS: BATH: 58 sq. ft, DECK: 31 sq. ft, GARAGE: 285 sq. ft,
BASEMENT: 344 sq. ft, UTILITY: 177 sq. ft, PORCH: 216 sq. ft,
SCREENED PORCH: 30 sq. ft

MEASUREMENTS CALCULATED BY V1Photos.COM ARE DEEMED HIGHLY RELIABLE BUT NOT GUARANTEED.



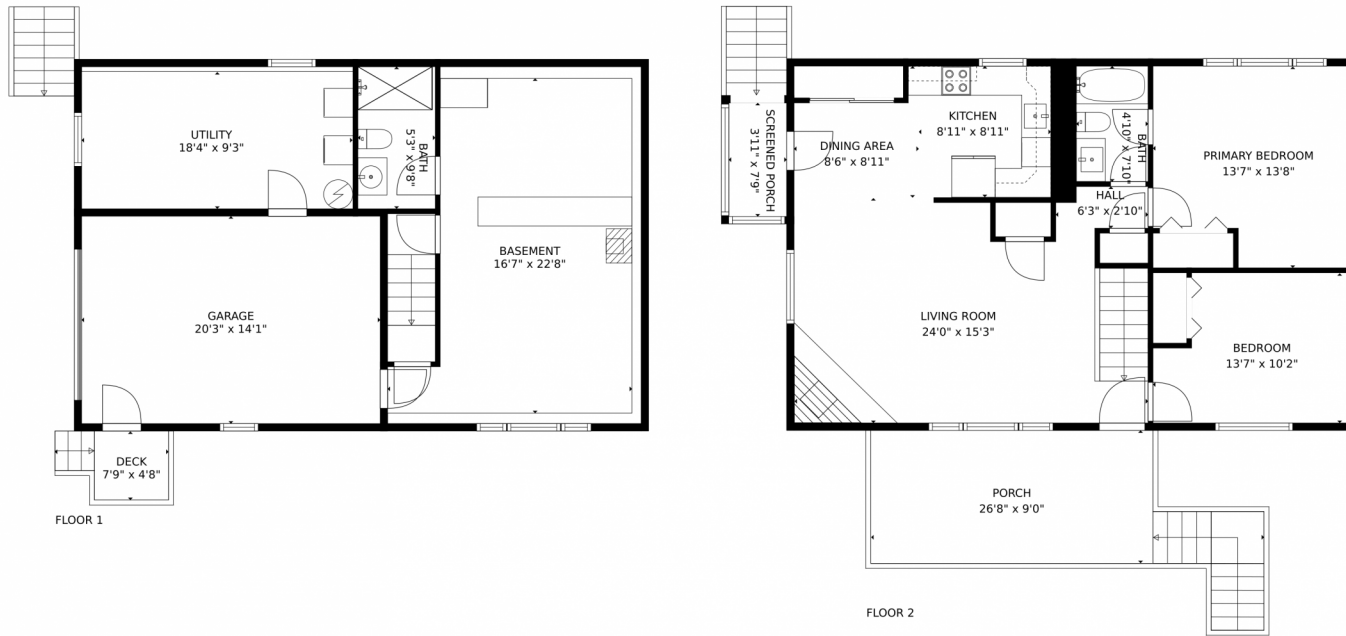
Disclaimer: Sizes and Dimensions are Approximate, Actual May Vary.



Cathy Ruger
303-503-6547
realtorcathyruger@gmail.com



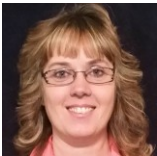
Scan code
for more
property
details



TOTAL: 958 sq. ft
BELOW GROUND: 38 sq. ft, FLOOR 2: 920 sq. ft
EXCLUDED AREAS: BATH: 58 sq. ft, DECK: 31 sq. ft, GARAGE: 285 sq. ft,
BASEMENT: 344 sq. ft, UTILITY: 177 sq. ft, PORCH: 216 sq. ft,
SCREENED PORCH: 30 sq. ft

MEASUREMENTS CALCULATED BY V1Photos.com ARE DEEMED HIGHLY RELIABLE BUT NOT GUARANTEED.

Disclaimer: Sizes and Dimensions are Approximate, Actual May Vary.



Cathy Ruger
303-503-6547
realtorcathyruger@gmail.com

