



9745 Kings Canyon Drive
Peyton, CO 80831



Single Family



3018 SQFT



4 Beds



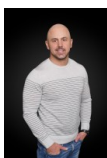
3/1 Baths



3 Car



0.17 Acre

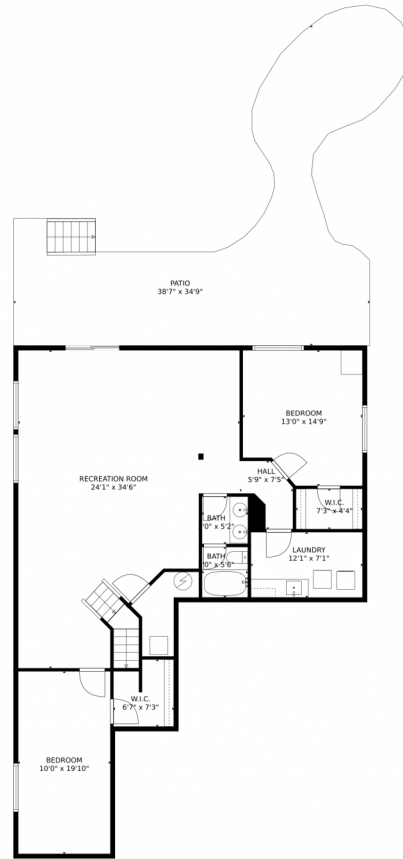


Ryan Lavergne
720-648-4608
ryan@rdreteam.com
<https://www.rdrealestateteam.com/>



Scan code
for more
property
details





TOTAL: 2879 sq. ft
BELOW GROUND: 1379 sq. ft, FLOOR 2: 1500 sq. ft
EXCLUDED AREAS: PATIO: 681 sq. ft, PORCH: 64 sq. ft, DECK: 191 sq. ft,
GARAGE: 597 sq. ft

MEASUREMENTS CALCULATED BY V1Photos.com ARE DEEMED HIGHLY RELIABLE BUT NOT GUARANTEED.

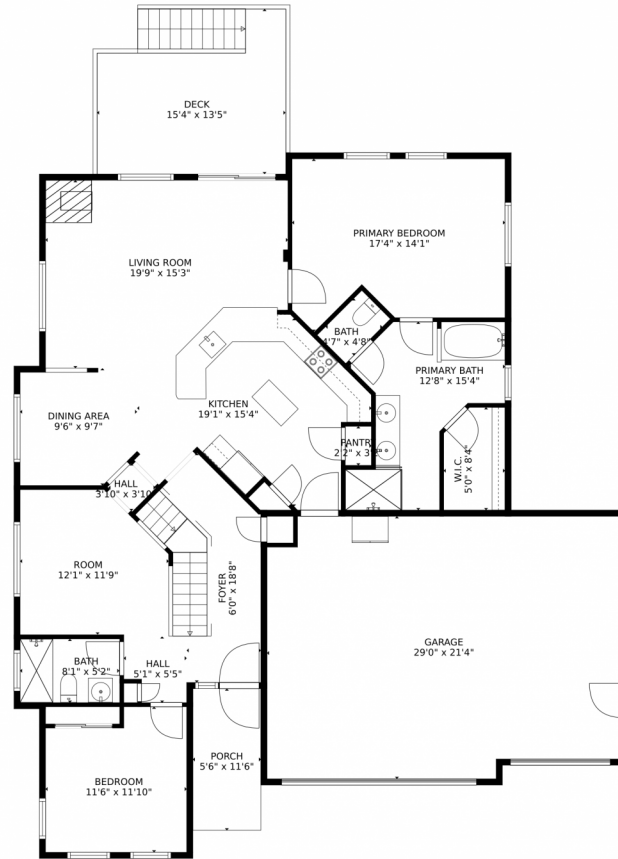


Disclaimer: Sizes and Dimensions are Approximate, Actual May Vary.



Ryan Lavergne
720-648-4608
ryan@rdreteam.com
<https://www.rdrealestateteam.com/>



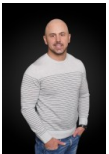


TOTAL: 2879 sq. ft
BELOW GROUND: 1379 sq. ft, FLOOR 2: 1500 sq. ft
EXCLUDED AREAS: PATIO: 681 sq. ft, PORCH: 64 sq. ft, DECK: 191 sq. ft,
GARAGE: 597 sq. ft

MEASUREMENTS CALCULATED BY V1Photos.com ARE DEEMED HIGHLY RELIABLE BUT NOT GUARANTEED.

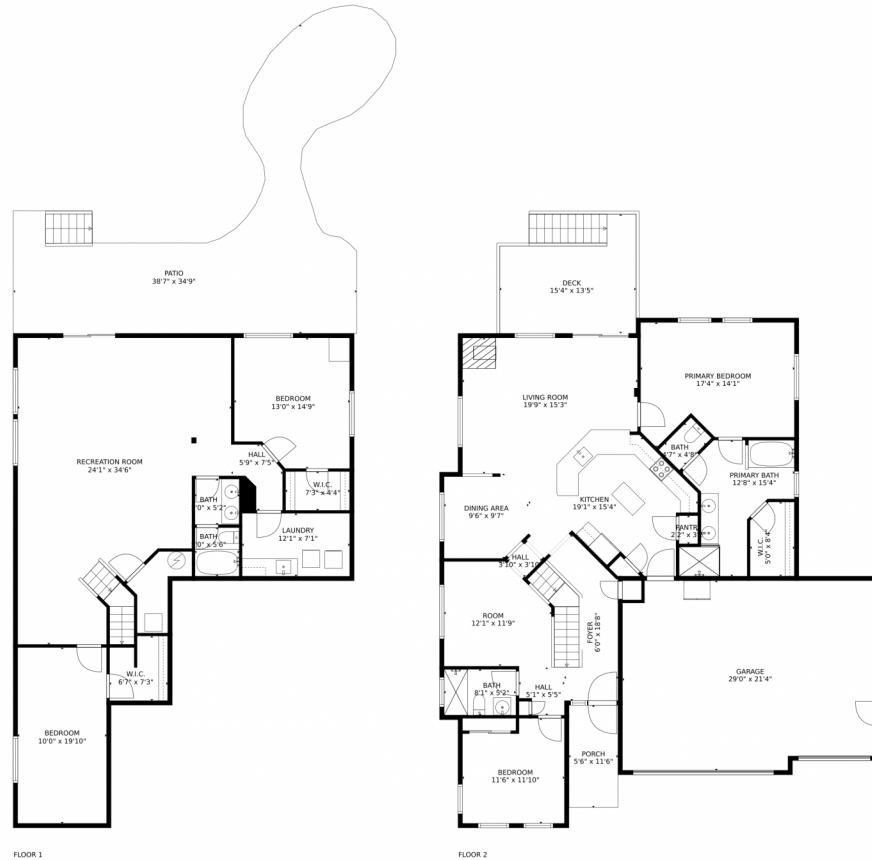


Disclaimer: Sizes and Dimensions are Approximate, Actual May Vary.



Ryan Lavergne
720-648-4608
ryan@rdreteam.com
<https://www.rdrealestateteam.com/>



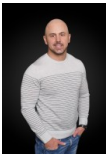


TOTAL: 2879 sq. ft
BELOW GROUND: 1379 sq. ft, FLOOR 2: 1500 sq. ft
EXCLUDED AREAS: PATIO: 681 sq. ft, PORCH: 64 sq. ft, DECK: 191 sq. ft,
GARAGE: 597 sq. ft

MEASUREMENTS CALCULATED BY V1Photos.com ARE DEEMED HIGHLY RELIABLE BUT NOT GUARANTEED.



Disclaimer: Sizes and Dimensions are Approximate, Actual May Vary.



Ryan Lavergne
720-648-4608
ryan@rdreteam.com
<https://www.rdrealestateteam.com/>



Scan code
for more
property
details