



4758 Joplin Street, Denver, CO 80239 - floorplan_all_0



Single Family



2027 SQFT



Taylor Haas

303-665-7368

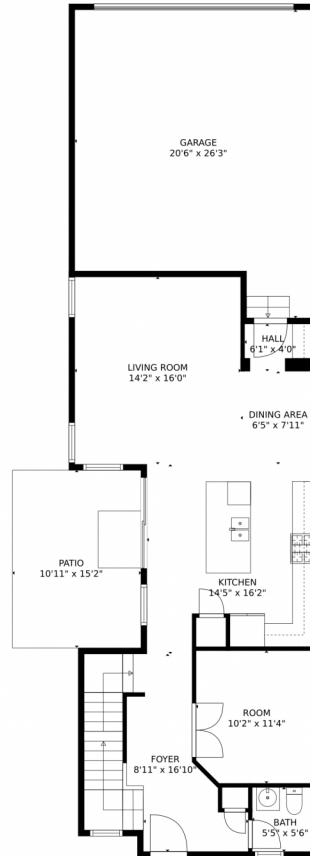
taylorh@coloradorpm.com

<https://www.coloradorpm.com/available-rental-properties-denver>

Scan code
for more
property
details



4758 Joplin Street, Denver, CO 80239 – Main Level



TOTAL: 1977 sq. ft
BELOW GROUND: 77 sq. ft, FLOOR 2: 859 sq. ft, FLOOR 3: 1041 sq. ft
EXCLUDED AREAS: BASEMENT: 761 sq. ft, GARAGE: 481 sq. ft, PATIO: 166 sq. ft,
OPEN TO BELOW: 66 sq. ft

MEASUREMENTS CALCULATED BY V1Photos.com ARE DEEMED HIGHLY RELIABLE BUT NOT GUARANTEED.



Disclaimer: Sizes and Dimensions are Approximate, Actual May Vary.



Taylor Haas

303-665-7368

taylorh@coloradorpm.com

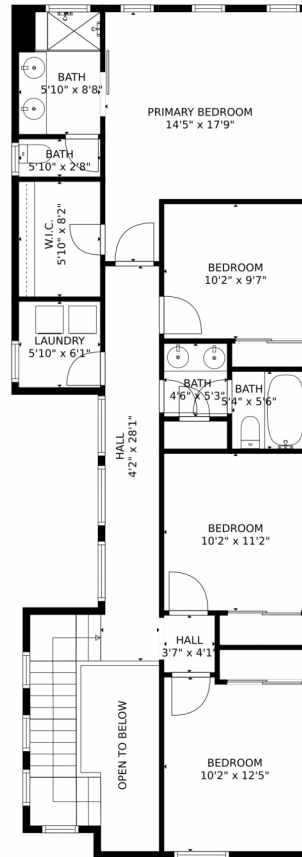
<https://www.coloradorpm.com/available-rental-properties-denver>



Scan code
for more
property
details



4758 Joplin Street, Denver, CO 80239 – Upper Level



TOTAL: 1977 sq. ft
BELOW GROUND: 77 sq. ft, FLOOR 2: 859 sq. ft, FLOOR 3: 1041 sq. ft
EXCLUDED AREAS: BASEMENT: 761 sq. ft, GARAGE: 481 sq. ft, PATIO: 166 sq. ft,
OPEN TO BELOW: 66 sq. ft

MEASUREMENTS CALCULATED BY V1Photos.com ARE DEEMED HIGHLY RELIABLE BUT NOT GUARANTEED.



Disclaimer: Sizes and Dimensions are Approximate, Actual May Vary.



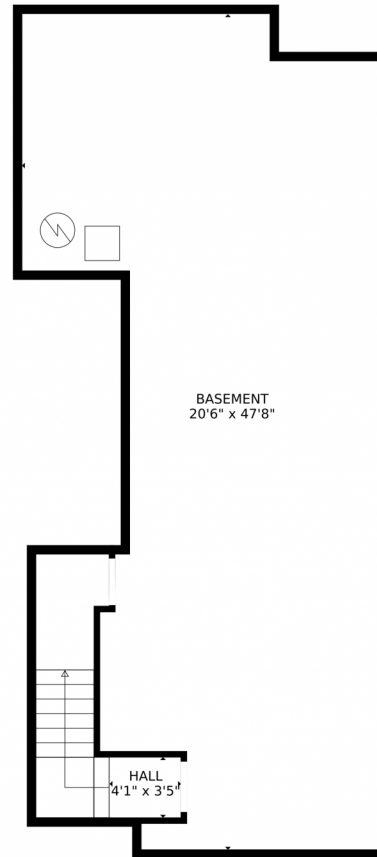
Taylor Haas
303-665-7368
taylorh@coloradorm.com
<https://www.coloradorm.com/available-rental-properties-denv>



Scan code
for more
property
details



4758 Joplin Street, Denver, CO 80239 — Lower Level



TOTAL: 1977 sq. ft
BELOW GROUND: 77 sq. ft, FLOOR 2: 859 sq. ft, FLOOR 3: 1041 sq. ft
EXCLUDED AREAS: BASEMENT: 761 sq. ft, GARAGE: 481 sq. ft, PATIO: 166 sq. ft,
OPEN TO BELOW: 66 sq. ft

MEASUREMENTS CALCULATED BY V1Photos.com ARE DEEMED HIGHLY RELIABLE BUT NOT GUARANTEED.



Disclaimer: Sizes and Dimensions are Approximate, Actual May Vary.



Taylor Haas
303-665-7368
taylorh@coloradorpm.com
<https://www.coloradorpm.com/available-rental-properties-denver>



4758 Joplin Street, Denver, CO 80239 – All Levels



TOTAL: 1977 sq. ft
BELOW GROUND: 77 sq. ft, FLOOR 2: 859 sq. ft, FLOOR 3: 1041 sq. ft
EXCLUDED AREAS: BASEMENT: 761 sq. ft, GARAGE: 481 sq. ft, PATIO: 166 sq. ft,
OPEN TO BELOW: 66 sq. ft

MEASUREMENTS CALCULATED BY V1Photos.COM ARE DEEMED HIGHLY RELIABLE BUT NOT GUARANTEED.



Disclaimer: Sizes and Dimensions are Approximate, Actual May Vary.



Taylor Haas

303-665-7368

taylorh@coloradorpm.com

<https://www.coloradorpm.com/available-rental-properties-denver>



Scan code
for more
property
details

