



217 Green Valley Cir
 Castle Pines, CO 80108
 COMMUNITY: Castle Valley

PRICE \$975,000



217 Green Valley Cir, Castle Pines, CO 80108 - floorplan_single_1



Single Family



3095 SQFT



4 Beds



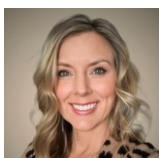
3/1 Baths



4 Car



0.18 Acre



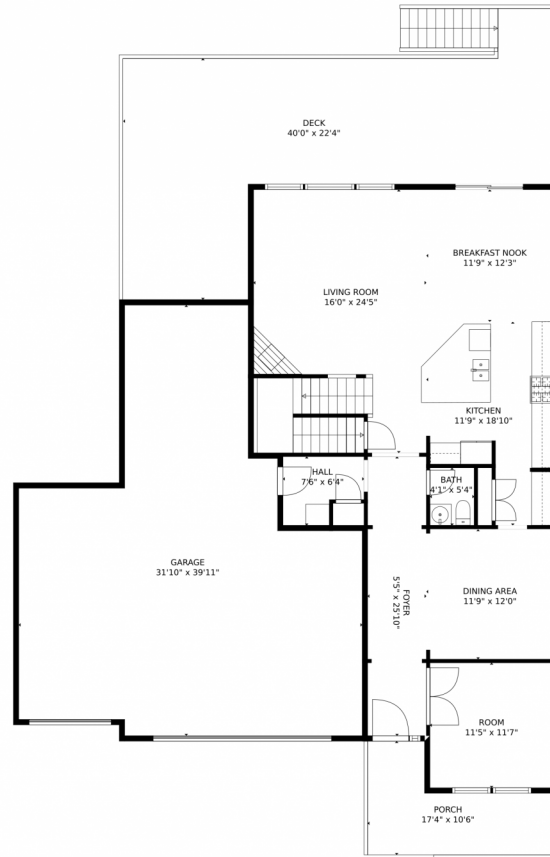
Kelly Talen
 602-621-1146
 kelltalen@gmail.com



Scan code
 for more
 property
 details



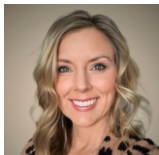
217 Green Valley Cir, Castle Pines, CO 80108 – Main Level



TOTAL: 3013 sq. ft
BELOW GROUND: 0 sq. ft, FLOOR 2: 1236 sq. ft, FLOOR 3: 1777 sq. ft
EXCLUDED AREAS: BASEMENT: 1207 sq. ft, COVERED PATIO: 579 sq. ft, GARAGE: 885 sq. ft,
PORCH: 125 sq. ft, DECK: 615 sq. ft, OPEN TO BELOW: 37 sq. ft
MEASUREMENTS CALCULATED BY V1Photos.com ARE DEEMED HIGHLY RELIABLE BUT NOT GUARANTEED.



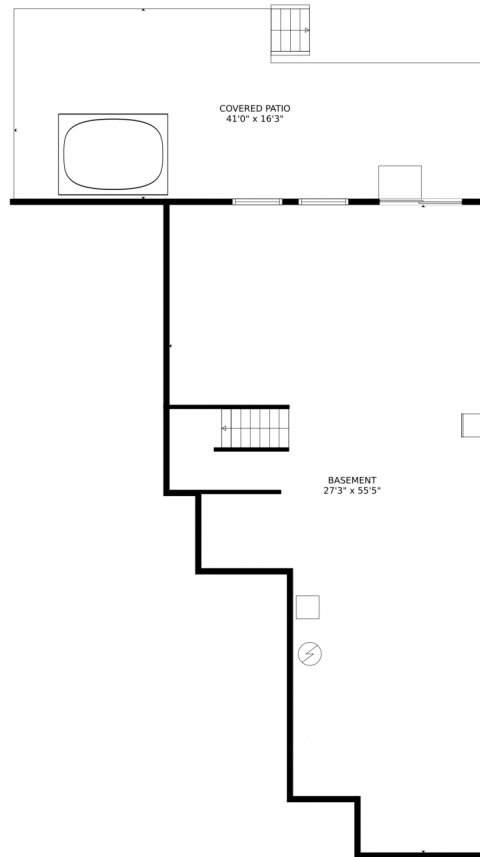
Disclaimer: Sizes and Dimensions are Approximate, Actual May Vary.



Kelly Talen
602-621-1146
kelltalen@gmail.com



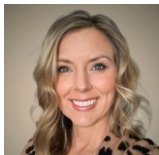
217 Green Valley Cir, Castle Pines, CO 80108 – Lower Level



TOTAL: 3013 sq. ft
BELOW GROUND: 0 sq. ft, FLOOR 2: 1236 sq. ft, FLOOR 3: 1777 sq. ft
EXCLUDED AREAS: BASEMENT: 1207 sq. ft, COVERED PATIO: 579 sq. ft, GARAGE: 885 sq. ft,
PORCH: 125 sq. ft, DECK: 615 sq. ft, OPEN TO BELOW: 37 sq. ft
MEASUREMENTS CALCULATED BY V1Photos.com ARE DEEMED HIGHLY RELIABLE BUT NOT GUARANTEED.



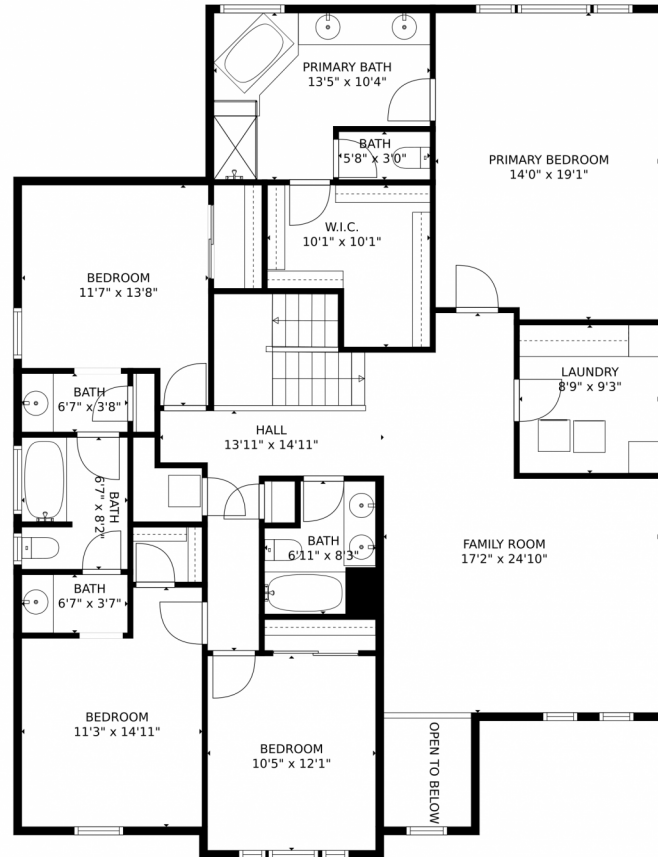
Disclaimer: Sizes and Dimensions are Approximate, Actual May Vary.



Kelly Talen
602-621-1146
kelltalen@gmail.com



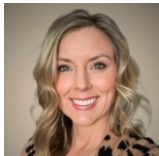
217 Green Valley Cir, Castle Pines, CO 80108 – Upper Level



TOTAL: 3013 sq. ft
BELOW GROUND: 0 sq. ft, FLOOR 2: 1236 sq. ft, FLOOR 3: 1777 sq. ft
EXCLUDED AREAS: BASEMENT: 1207 sq. ft, COVERED PATIO: 579 sq. ft, GARAGE: 885 sq. ft,
PORCH: 125 sq. ft, DECK: 615 sq. ft, OPEN TO BELOW: 37 sq. ft
MEASUREMENTS CALCULATED BY V1Photos.com ARE DEEMED HIGHLY RELIABLE BUT NOT GUARANTEED.



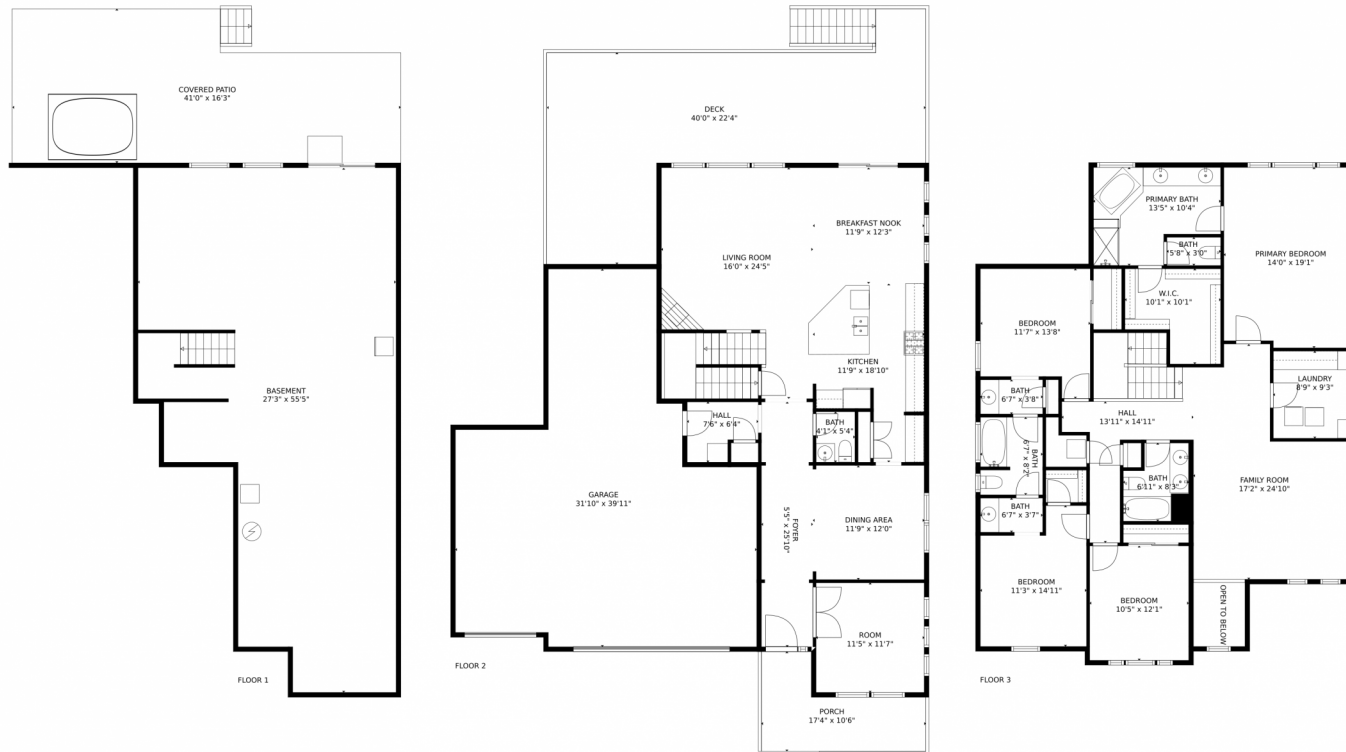
Disclaimer: Sizes and Dimensions are Approximate, Actual May Vary.



Kelly Talen
602-621-1146
kelltalen@gmail.com



217 Green Valley Cir, Castle Pines, CO 80108 – All Levels

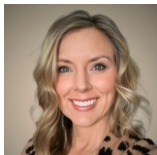


TOTAL: 3013 sq. ft
BELOW GROUND: 0 sq. ft, FLOOR 2: 1236 sq. ft, FLOOR 3: 1777 sq. ft
EXCLUDED AREAS: BASEMENT: 1207 sq. ft, COVERED PATIO: 579 sq. ft, GARAGE: 885 sq. ft,
PORCH: 125 sq. ft, DECK: 615 sq. ft, OPEN TO BELOW: 37 sq. ft

MEASUREMENTS CALCULATED BY V1Photos.com ARE DEEMED HIGHLY RELIABLE BUT NOT GUARANTEED.



Disclaimer: Sizes and Dimensions are Approximate, Actual May Vary.



Kelly Talen
602-621-1146
kelltalen@gmail.com

