




 Single Family

 3146 SQFT

 4 Beds

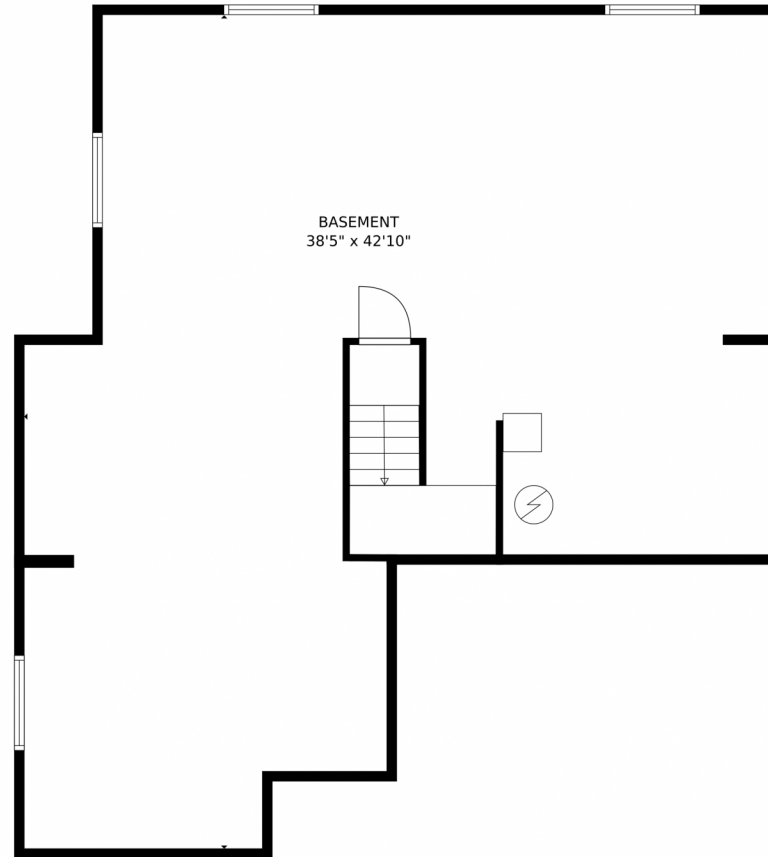
 2/1 Baths



**Taylor Haas**  
303-665-7368  
taylorh@coloradorpm.com  
<https://www.coloradorpm.com/available-rental-properties-denver>



# 2824 Equine Court, Colorado Springs, CO 80922 – Lower Level



**TOTAL: 3049 sq. ft**  
BELOW GROUND: 0 sq. ft, FLOOR 2: 1372 sq. ft, FLOOR 3: 1677 sq. ft  
EXCLUDED AREAS: BASEMENT: 1253 sq. ft, PORCH: 143 sq. ft, DECK: 169 sq. ft,  
PATIO: 291 sq. ft, GARAGE: 393 sq. ft

MEASUREMENTS CALCULATED BY V1Photos.com ARE DEEMED HIGHLY RELIABLE BUT NOT GUARANTEED.



Disclaimer: Sizes and Dimensions are Approximate, Actual May Vary.



**Taylor Haas**

303-665-7368

taylorh@coloradorpm.com

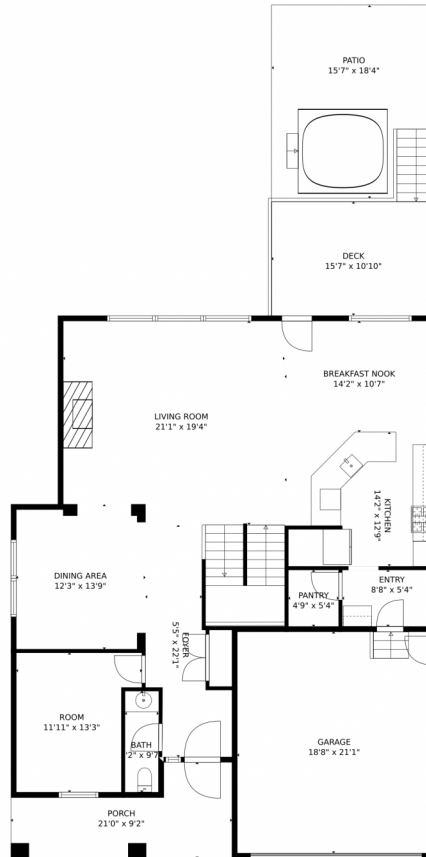
<https://www.coloradorpm.com/available-rental-properties-denver>



Scan code  
for more  
property  
details



# 2824 Equine Court, Colorado Springs, CO 80922 – Main Level



**TOTAL: 3049 sq. ft**  
BELOW GROUND: 0 sq. ft, FLOOR 2: 1372 sq. ft, FLOOR 3: 1677 sq. ft  
EXCLUDED AREAS: BASEMENT: 1253 sq. ft, PORCH: 143 sq. ft, DECK: 169 sq. ft,  
PATIO: 291 sq. ft, GARAGE: 393 sq. ft

MEASUREMENTS CALCULATED BY V1Photos.com ARE DEEMED HIGHLY RELIABLE BUT NOT GUARANTEED.



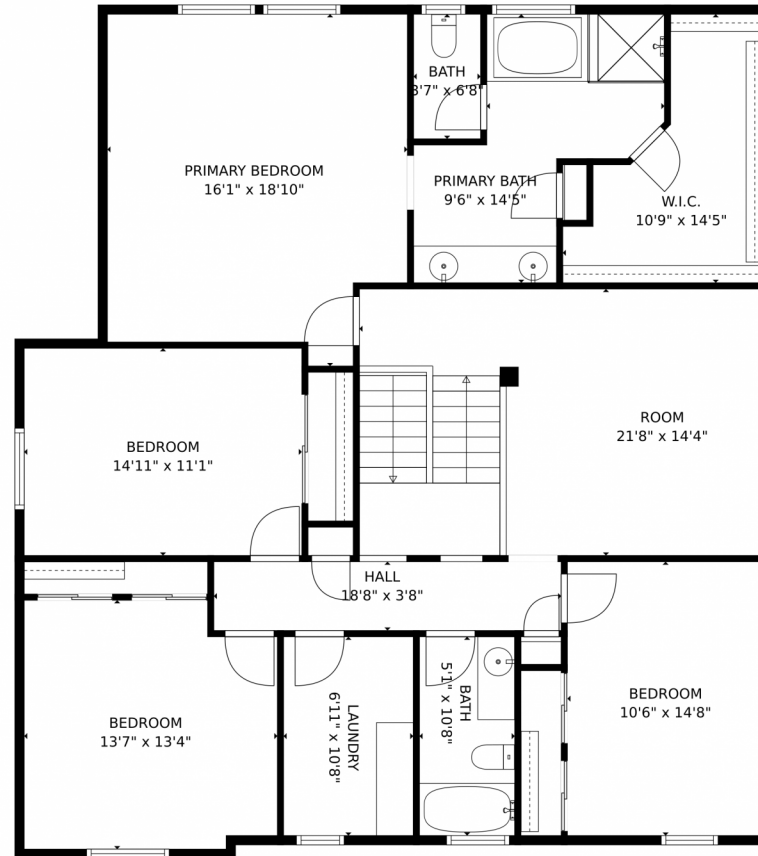
Disclaimer: Sizes and Dimensions are Approximate, Actual May Vary.



**Taylor Haas**  
303-665-7368  
taylorh@coloradorpm.com  
<https://www.coloradorpm.com/available-rental-properties-denver>



# 2824 Equine Court, Colorado Springs, CO 80922 – Upper Level



**TOTAL: 3049 sq. ft**  
BELOW GROUND: 0 sq. ft, FLOOR 2: 1372 sq. ft, FLOOR 3: 1677 sq. ft  
EXCLUDED AREAS: BASEMENT: 1253 sq. ft, PORCH: 143 sq. ft, DECK: 169 sq. ft,  
PATIO: 291 sq. ft, GARAGE: 393 sq. ft  
MEASUREMENTS CALCULATED BY V1Photos.com ARE DEEMED HIGHLY RELIABLE BUT NOT GUARANTEED.



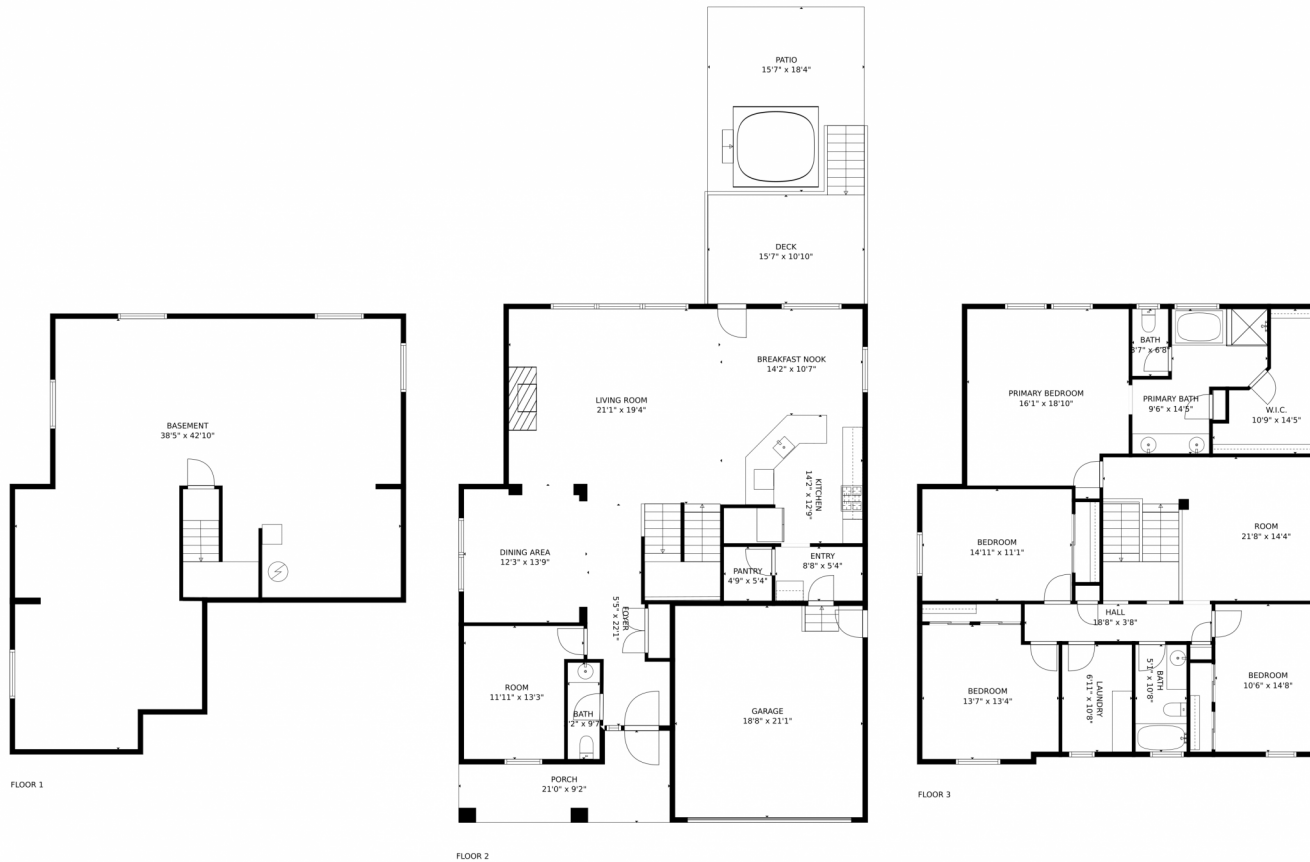
Disclaimer: Sizes and Dimensions are Approximate, Actual May Vary.



**Taylor Haas**  
303-665-7368  
taylorh@coloradorpm.com  
<https://www.coloradorpm.com/available-rental-properties-denver>



# 2824 Equine Court, Colorado Springs, CO 80922 – All Levels



**TOTAL: 3049 sq. ft**  
BELOW GROUND: 0 sq. ft, FLOOR 2: 1372 sq. ft, FLOOR 3: 1677 sq. ft  
EXCLUDED AREAS: BASEMENT: 1253 sq. ft, PORCH: 143 sq. ft, DECK: 169 sq. ft,  
PATIO: 291 sq. ft, GARAGE: 393 sq. ft

MEASUREMENTS CALCULATED BY V1Photos.com ARE DEEMED HIGHLY RELIABLE BUT NOT GUARANTEED.



Disclaimer: Sizes and Dimensions are Approximate, Actual May Vary.



**Taylor Haas**  
303-665-7368  
taylorh@coloradorpm.com  
<https://www.coloradorpm.com/available-rental-properties-denver>

