



Buy | Sell | Build | Develop | Consult

13755 Ashgrove Circle
Parker, CO 80134
COMMUNITY: Meridian Village

PRICE \$775,000



Single Family



3247 SQFT



3 Beds



2/1 Baths



2 Car



0.17 Acre



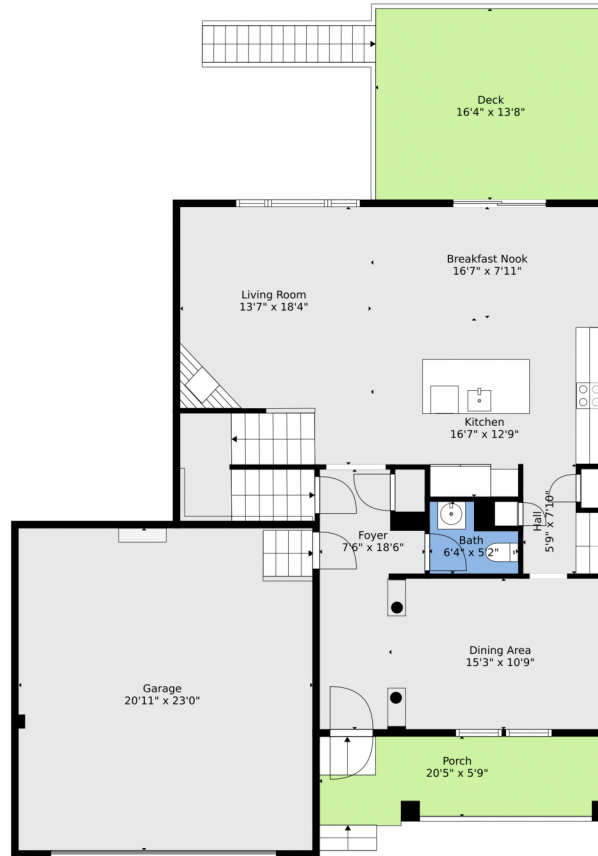
Nicole Rendaci
720-724-7030
nicole@nicoleworksforyou.com



Scan code
for more
property
details



13755 Ashgrove Circle, Parker, CO 80134 – Main Level



TOTAL: 2080 sq. ft
Below Ground: 0 sq. ft, FLOOR 2: 977 sq. ft, FLOOR 3: 1103 sq. ft
EXCLUDED AREAS: COVERED PATIO: 238 sq. ft, PATIO: 239 sq. ft, BASEMENT: 936 sq. ft,
GARAGE: 482 sq. ft, PORCH: 120 sq. ft, DECK: 248 sq. ft

Floor Plan Created By V1photos.com. Measurements Deamed Highly Reliable But Not Guaranteed.



Disclaimer: Sizes and Dimensions are Approximate, Actual May Vary.

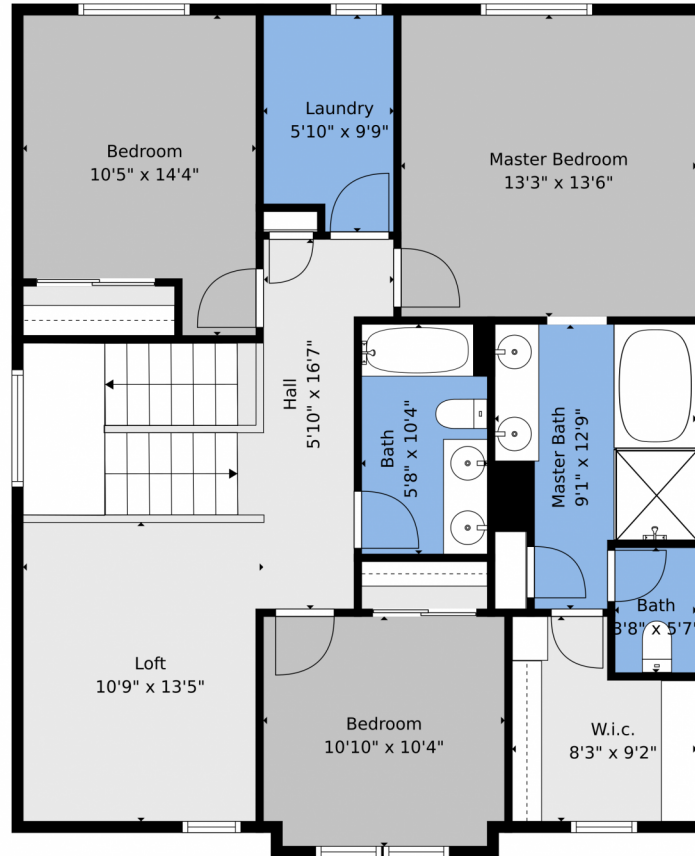


Nicole Rendaci
720-724-7030
nicole@nicoleworksforyou.com



Scan code
for more
property
details

13755 Ashgrove Circle, Parker, CO 80134 – Upper Level



TOTAL: 2080 sq. ft
Below Ground: 0 sq. ft, FLOOR 2: 977 sq. ft, FLOOR 3: 1103 sq. ft
EXCLUDED AREAS: COVERED PATIO: 238 sq. ft, PATIO: 239 sq. ft, BASEMENT: 936 sq. ft,
GARAGE: 482 sq. ft, PORCH: 120 sq. ft, DECK: 248 sq. ft

Floor Plan Created By V1photos.com, Measurements Deamed Highly Reliable But Not Guaranteed.



Disclaimer: Sizes and Dimensions are Approximate, Actual May Vary.

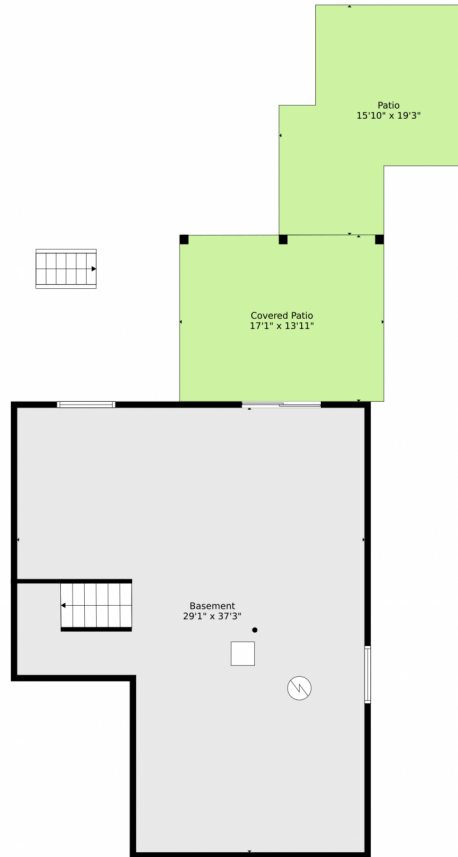


Nicole Rendaci
720-724-7030
nicole@nicoleworksforyou.com



Scan code
for more
property
details

13755 Ashgrove Circle, Parker, CO 80134 – Lower Level



TOTAL: 2080 sq. ft
Below Ground: 0 sq. ft, FLOOR 2: 977 sq. ft, FLOOR 3: 1103 sq. ft
EXCLUDED AREAS: COVERED PATIO: 238 sq. ft, PATIO: 239 sq. ft, BASEMENT: 936 sq. ft,
GARAGE: 482 sq. ft, PORCH: 120 sq. ft, DECK: 248 sq. ft

Floor Plan Created By V1photos.com, Measurements Deamed Highly Reliable But Not Guaranteed.



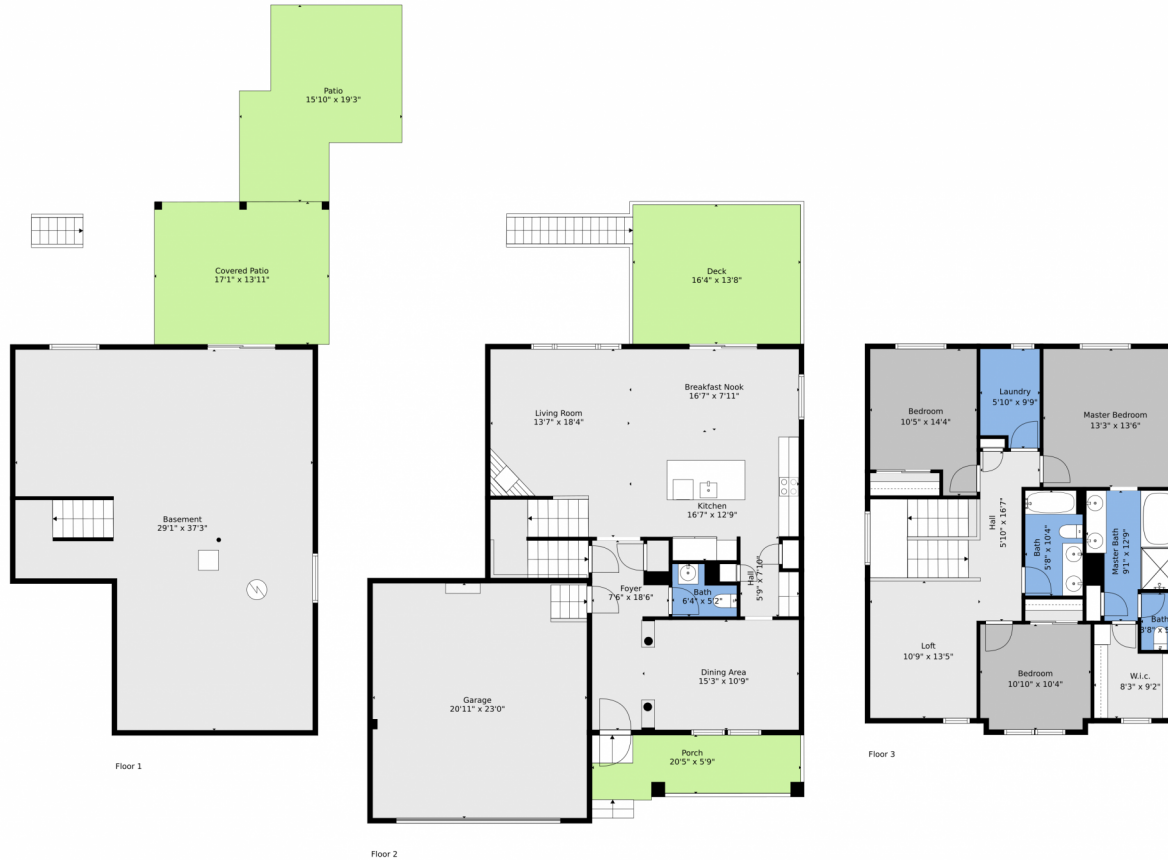
Disclaimer: Sizes and Dimensions are Approximate, Actual May Vary.



Nicole Rendaci
720-724-7030
nicole@nicoleworksforyou.com



13755 Ashgrove Circle, Parker, CO 80134 – All Levels



TOTAL: 2080 sq. ft
Below Ground: 0 sq. ft, FLOOR 2: 977 sq. ft, FLOOR 3: 1103 sq. ft
EXCLUDED AREAS: COVERED PATIO: 238 sq. ft, PATIO: 239 sq. ft, BASEMENT: 936 sq. ft,
GARAGE: 482 sq. ft, PORCH: 120 sq. ft, DECK: 248 sq. ft

Floor Plan Created By V1photos.com. Measurements Deamed Highly Reliable But Not Guaranteed.



Disclaimer: Sizes and Dimensions are Approximate, Actual May Vary.



Nicole Rendaci
720-724-7030
nicole@nicoleworksforyou.com



Scan code
for more
property
details