

Condominium



1216 SQFT



3 Beds



2/1 Baths



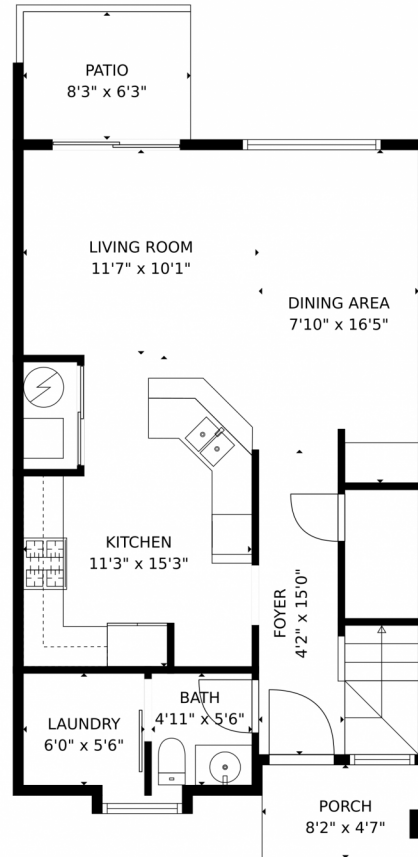
0.03 Acre



**Brian Franzen**  
970-301-0266  
brian@briansellsnoco.com



# 6827 Autumn Ridge Drive, Fort Collins, CO 80525 – Main Level



**TOTAL: 1254 sq. ft**  
FLOOR 1: 597 sq. ft, FLOOR 2: 657 sq. ft  
EXCLUDED AREAS: PORCH: 38 sq. ft, PATIO: 52 sq. ft, BAY WINDOW: 10 sq. ft,  
OPEN TO BELOW: 23 sq. ft  
MEASUREMENTS CALCULATED BY V1Photos.com ARE DEEMED HIGHLY RELIABLE BUT NOT GUARANTEED.



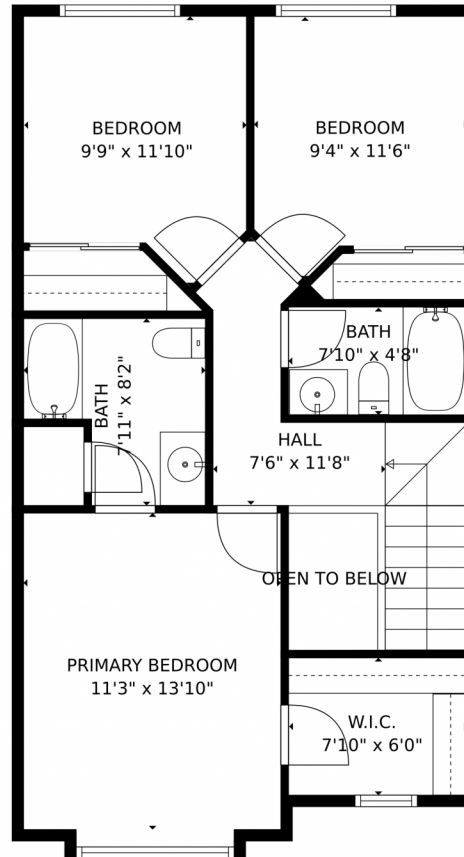
Disclaimer: Sizes and Dimensions are Approximate, Actual May Vary.



**Brian Franzen**  
970-301-0266  
brian@briansellsnoco.com



6827 Autumn Ridge Drive, Fort Collins, CO 80525 – Upper Level



**TOTAL: 1254 sq. ft**  
FLOOR 1: 597 sq. ft, FLOOR 2: 657 sq. ft  
EXCLUDED AREAS: PORCH: 38 sq. ft, PATIO: 52 sq. ft, BAY WINDOW: 10 sq. ft,  
OPEN TO BELOW: 23 sq. ft  
MEASUREMENTS CALCULATED BY V1Photos.com ARE DEEMED HIGHLY RELIABLE BUT NOT GUARANTEED.



Disclaimer: Sizes and Dimensions are Approximate, Actual May Vary.

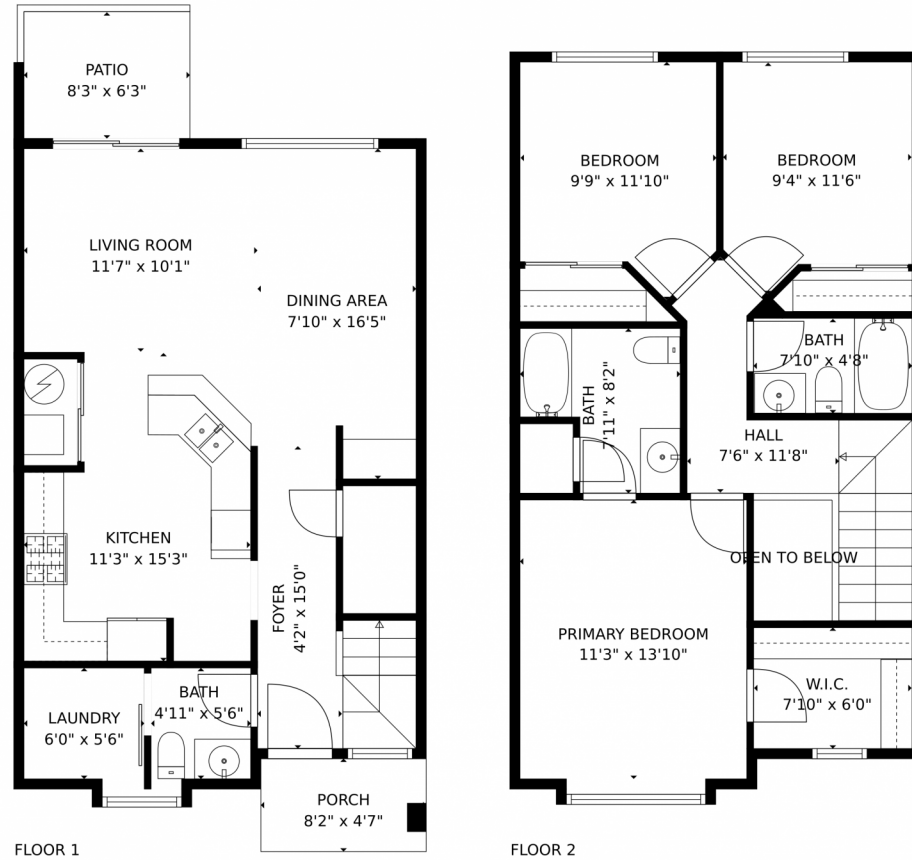


**Brian Franzen**  
970-301-0266  
brian@briansellsnoco.com





# 6827 Autumn Ridge Drive, Fort Collins, CO 80525 – All Levels



**TOTAL: 1254 sq. ft**  
FLOOR 1: 597 sq. ft, FLOOR 2: 657 sq. ft  
EXCLUDED AREAS: PORCH: 38 sq. ft, PATIO: 52 sq. ft, BAY WINDOW: 10 sq. ft,  
OPEN TO BELOW: 23 sq. ft  
MEASUREMENTS CALCULATED BY V1Photos.com ARE DEEMED HIGHLY RELIABLE BUT NOT GUARANTEED.



Disclaimer: Sizes and Dimensions are Approximate, Actual May Vary.



**Brian Franzen**  
970-301-0266  
brian@briansellsnoco.com

