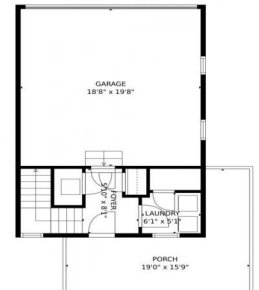




602 Rawlins Way  
Lafayette, CO 80026  
COMMUNITY: Coal Creek Village



602 Rawlins Way, Lafayette, CO 80026 - floorplan\_single\_0

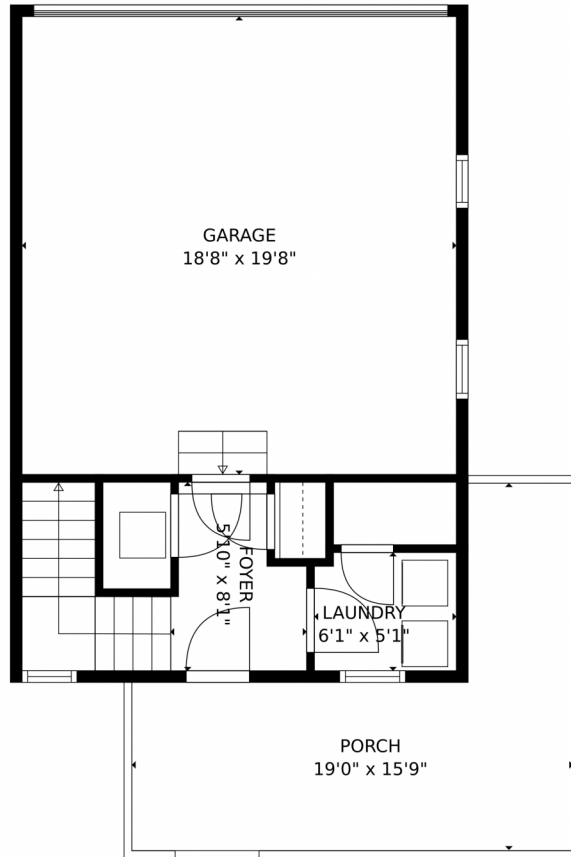


Single Family   1340 SQFT   2 Beds   2/1 Baths   2 Car



Jason Cassidy  
720-220-6964  
jason@coloradorpm.com





**TOTAL: 1179 sq. ft**  
BELOW GROUND: 128 sq. ft, FLOOR 2: 525 sq. ft, FLOOR 3: 526 sq. ft  
EXCLUDED AREAS: UNDEFINED: 30 sq. ft, GARAGE: 367 sq. ft, PORCH: 176 sq. ft,  
BALCONY: 176 sq. ft  
MEASUREMENTS CALCULATED BY V1Photos.com ARE DEEMED HIGHLY RELIABLE BUT NOT GUARANTEED.

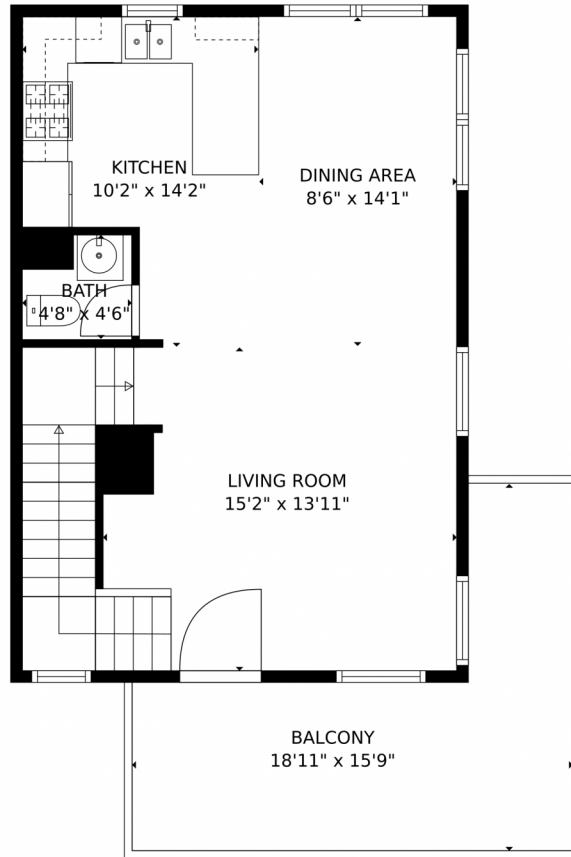


Disclaimer: Sizes and Dimensions are Approximate, Actual May Vary.



**Jason Cassidy**  
720-220-6964  
jason@coloradorpm.com





**TOTAL: 1179 sq. ft**  
BELOW GROUND: 128 sq. ft, FLOOR 2: 525 sq. ft, FLOOR 3: 526 sq. ft  
EXCLUDED AREAS: UNDEFINED: 30 sq. ft, GARAGE: 367 sq. ft, PORCH: 176 sq. ft,  
BALCONY: 176 sq. ft

MEASUREMENTS CALCULATED BY V1Photos.com ARE DEEMED HIGHLY RELIABLE BUT NOT GUARANTEED.

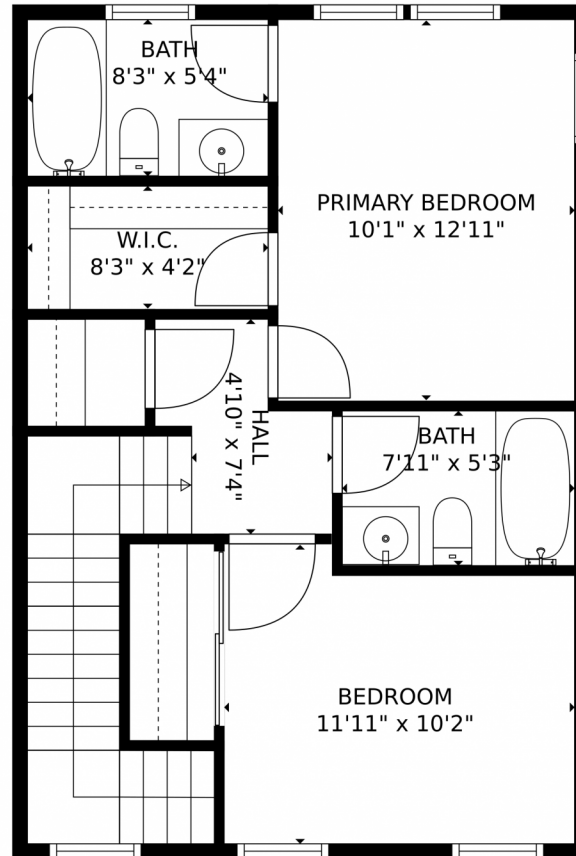


Disclaimer: Sizes and Dimensions are Approximate, Actual May Vary.



**Jason Cassidy**  
720-220-6964  
jason@coloradorpm.com





**TOTAL: 1179 sq. ft**  
BELOW GROUND: 128 sq. ft, FLOOR 2: 525 sq. ft, FLOOR 3: 526 sq. ft  
EXCLUDED AREAS: UNDEFINED: 30 sq. ft, GARAGE: 367 sq. ft, PORCH: 176 sq. ft,  
BALCONY: 176 sq. ft  
MEASUREMENTS CALCULATED BY V1Photos.com ARE DEEMED HIGHLY RELIABLE BUT NOT GUARANTEED.



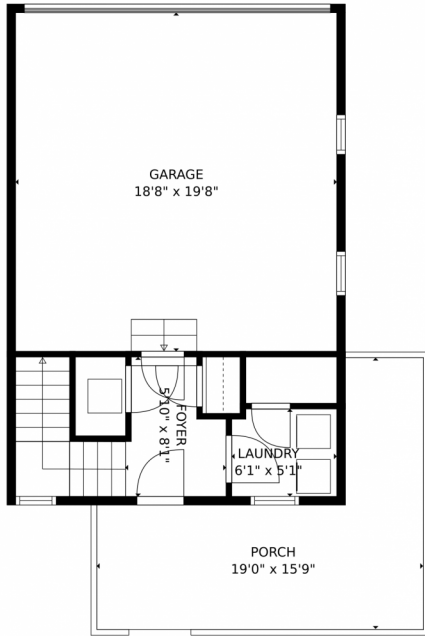
Disclaimer: Sizes and Dimensions are Approximate, Actual May Vary.



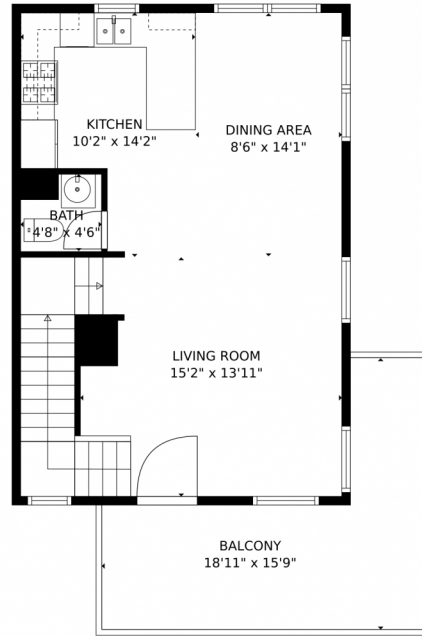
**Jason Cassidy**  
720-220-6964  
jason@coloradorpm.com



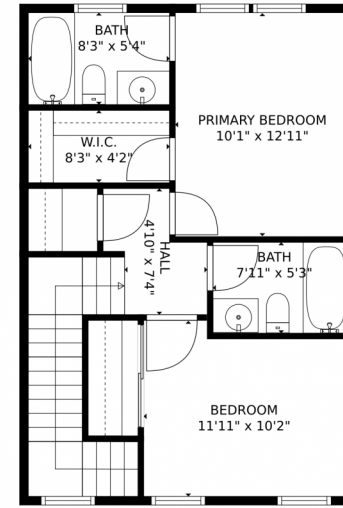




FLOOR 1



FLOOR 2



FLOOR 3

**TOTAL: 1179 sq. ft**  
BELOW GROUND: 128 sq. ft, FLOOR 2: 525 sq. ft, FLOOR 3: 526 sq. ft  
EXCLUDED AREAS: UNDEFINED: 30 sq. ft, GARAGE: 367 sq. ft, PORCH: 176 sq. ft,  
BALCONY: 176 sq. ft

MEASUREMENTS CALCULATED BY V1Photos.com ARE DEEMED HIGHLY RELIABLE BUT NOT GUARANTEED.



Disclaimer: Sizes and Dimensions are Approximate, Actual May Vary.



**Jason Cassidy**  
720-220-6964  
jason@coloradorpm.com

