



Single Family



1200 SQFT



2 Beds



1/1 Baths



1 Car



Jordan Kermes

952-956-2958

[jkermes@wedgewoodhomesrealty.com](mailto:jkermes@wedgewoodhomesrealty.com)

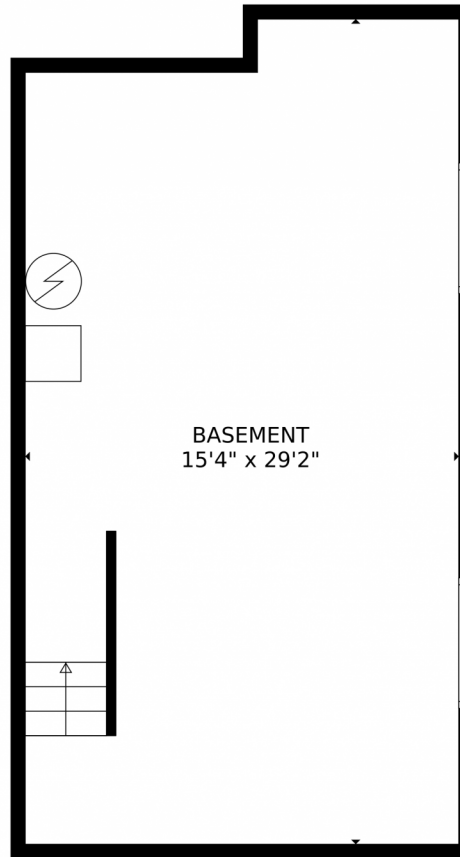
<https://colorado.wedgewoodhomesrealty.com>



Scan code  
for more  
property  
details



# 24 Pineridge Court, Pueblo, CO 81001 – Lower Level



BASEMENT  
15'4" x 29'2"

**TOTAL: 924 sq. ft**  
BELOW GROUND: 0 sq. ft, FLOOR 2: 435 sq. ft, FLOOR 3: 489 sq. ft  
EXCLUDED AREAS: BASEMENT: 431 sq. ft, PORCH: 30 sq. ft, DECK: 86 sq. ft,  
FIREPLACE: 12 sq. ft

MEASUREMENTS CALCULATED BY V1Photos.com ARE DEEMED HIGHLY RELIABLE BUT NOT GUARANTEED.



Disclaimer: Sizes and Dimensions are Approximate, Actual May Vary.



**Jordan Kermes**

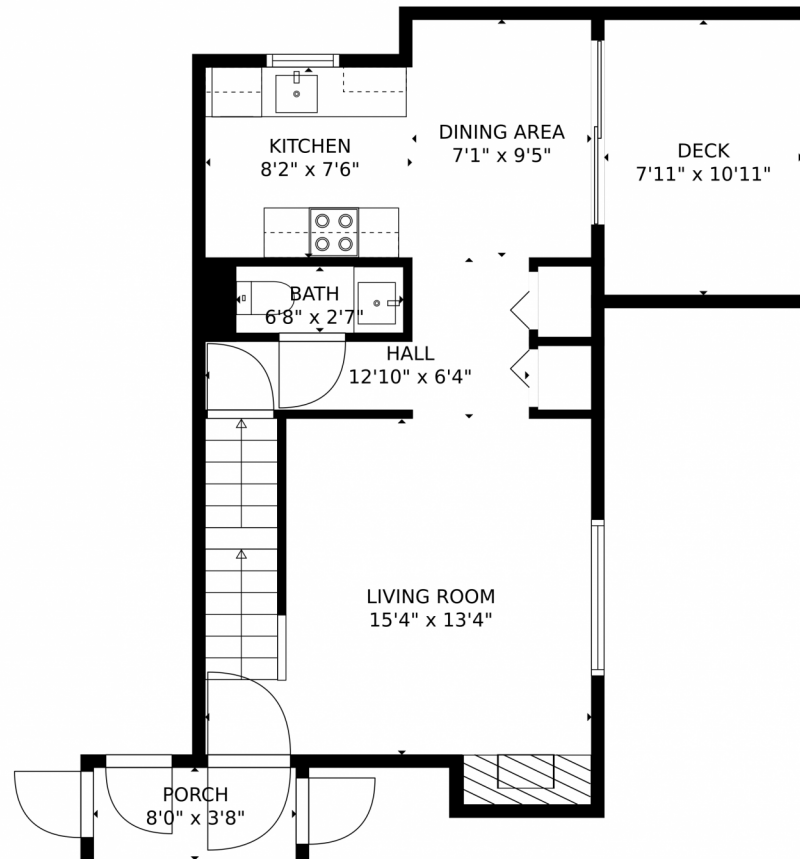
952-956-2958

[jkermes@wedgewoodhomesrealty.com](mailto:jkermes@wedgewoodhomesrealty.com)

<https://colorado.wedgewoodhomesrealty.com>



# 24 Pineridge Court, Pueblo, CO 81001 – Main Level



**TOTAL: 924 sq. ft**  
BELOW GROUND: 0 sq. ft, FLOOR 2: 435 sq. ft, FLOOR 3: 489 sq. ft  
EXCLUDED AREAS: BASEMENT: 431 sq. ft, PORCH: 30 sq. ft, DECK: 86 sq. ft,  
FIREPLACE: 12 sq. ft  
MEASUREMENTS CALCULATED BY V1Photos.com ARE DEEMED HIGHLY RELIABLE BUT NOT GUARANTEED.



Disclaimer: Sizes and Dimensions are Approximate, Actual May Vary.

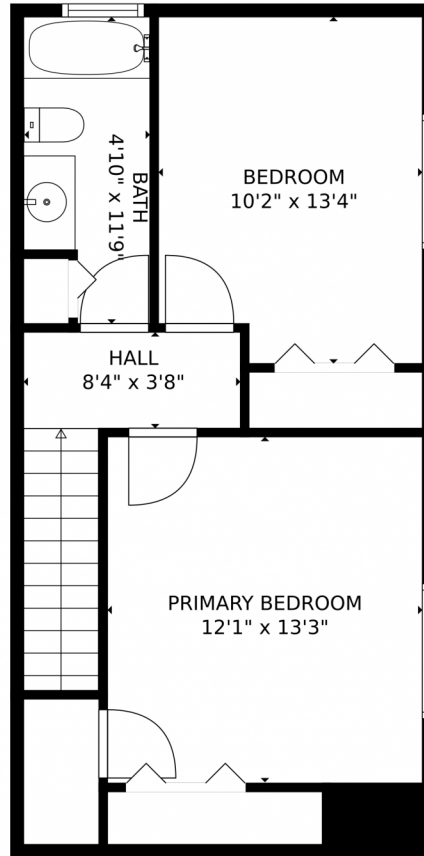


**Jordan Kermes**  
952-956-2958  
jkermes@wedgewoodhomesrealty.com  
<https://colorado.wedgewoodhomesrealty.com>





24 Pineridge Court, Pueblo, CO 81001 – upper level



**TOTAL: 924 sq. ft**  
BELOW GROUND: 0 sq. ft, FLOOR 2: 435 sq. ft, FLOOR 3: 489 sq. ft  
EXCLUDED AREAS: BASEMENT: 431 sq. ft, PORCH: 30 sq. ft, DECK: 86 sq. ft,  
FIREPLACE: 12 sq. ft  
MEASUREMENTS CALCULATED BY V1Photos.com ARE DEEMED HIGHLY RELIABLE BUT NOT GUARANTEED.



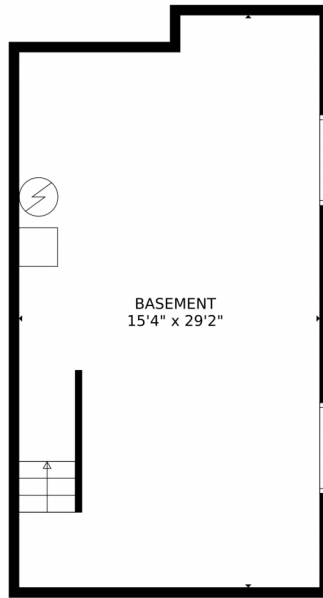
Disclaimer: Sizes and Dimensions are Approximate, Actual May Vary.



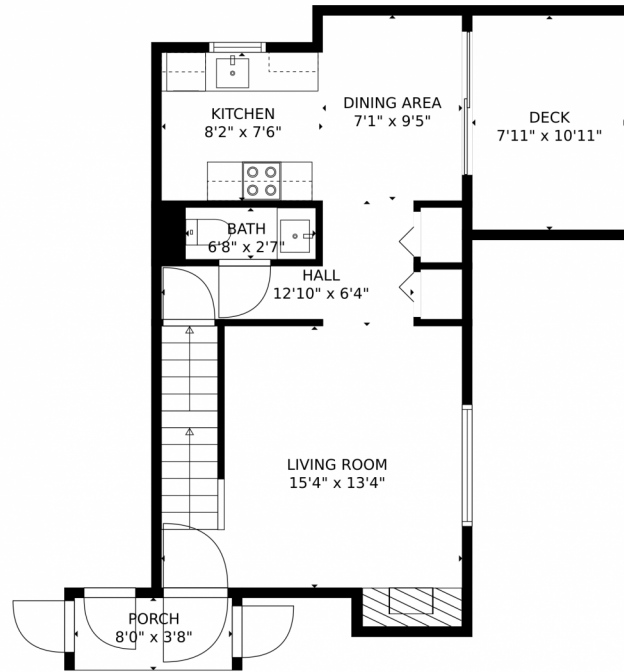
**Jordan Kermes**  
952-956-2958  
jkermes@wedgewoodhomesrealty.com  
<https://colorado.wedgewoodhomesrealty.com>



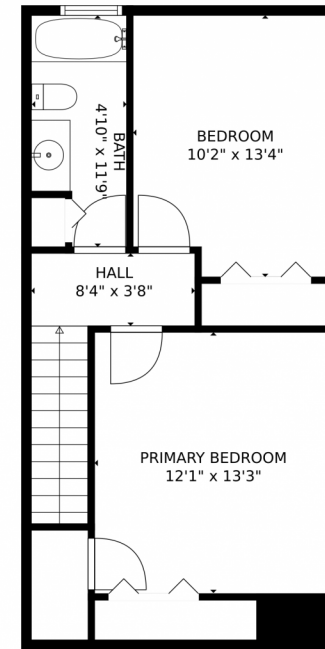
# 24 Pineridge Court, Pueblo, CO 81001 – All Levels



FLOOR 1



FLOOR 2



FLOOR 3

**TOTAL: 924 sq. ft**  
BELOW GROUND: 0 sq. ft, FLOOR 2: 435 sq. ft, FLOOR 3: 489 sq. ft  
EXCLUDED AREAS: BASEMENT: 431 sq. ft, PORCH: 30 sq. ft, DECK: 86 sq. ft,  
FIREPLACE: 12 sq. ft

MEASUREMENTS CALCULATED BY V1Photos.com ARE DEEMED HIGHLY RELIABLE BUT NOT GUARANTEED.



Disclaimer: Sizes and Dimensions are Approximate, Actual May Vary.



**Jordan Kermes**

952-956-2958

[jkermes@wedgewoodhomesrealty.com](mailto:jkermes@wedgewoodhomesrealty.com)

<https://colorado.wedgewoodhomesrealty.com>



Scan code  
for more  
property  
details

