



Single Family



3,949 SQFT



4 Beds



3/1 Baths



4 Car



1.4 Acre

PROPERTY DETAILS

This remarkable home in Evergreen offers 4 bedrooms, 4 bathrooms, and 3,949 sq ft of living space. The attention to detail and quality craftsmanship is evident throughout. The foyer has travertine tile floors and a towering ceiling. The family room has a gas fireplace and mahogany beamed ceiling. The kitchen has granite counters and stainless steel appliances. The bedrooms are comfortable and tranquil. The primary suite has luxury features like tray ceilings, a marble gas fireplace, and a wet bar. The primary bathroom has 2 water closets and a steam shower. The detached shop/garage is heated and has built-in storage. The wraparound deck offers breathtaking mountain views. The yard has a greenhouse and plenty of usable land. Schedule a showing today to experience the beauty and luxury of this property.

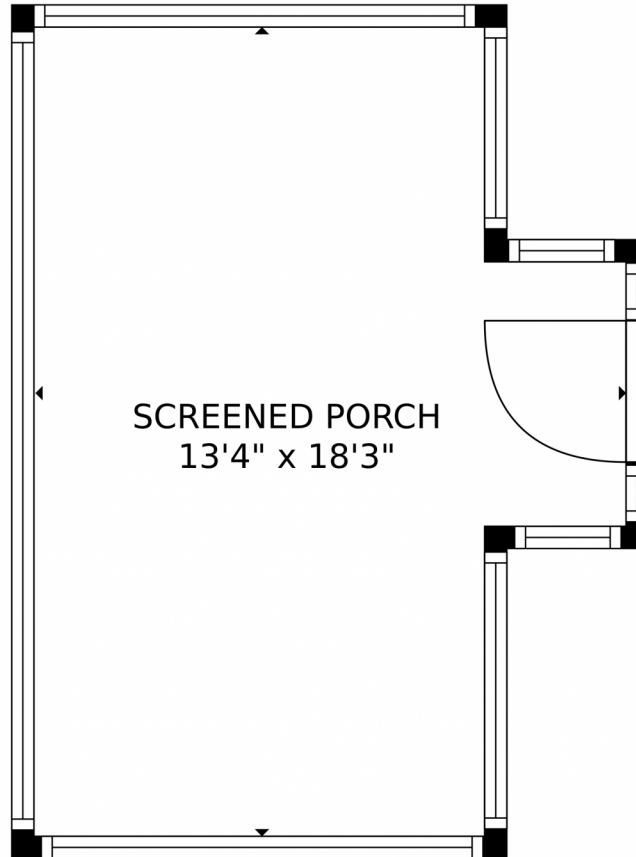


Troy Strom
303-888-4162
troy@kentwood.com



Scan code
for more
property
details





TOTAL: 3439 sq. ft
BELOW GROUND: 0 sq. ft, FLOOR 2: 2475 sq. ft, FLOOR 3: 0 sq. ft, FLOOR 4: 964 sq. ft
EXCLUDED AREAS: SCREENED PORCH: 205 sq. ft, GARAGE: 1403 sq. ft, DECK: 2318 sq. ft,
PORCH: 130 sq. ft, BAY WINDOW: 9 sq. ft, FIREPLACE: 23 sq. ft,
PATIO: 827 sq. ft, OPEN TO BELOW: 86 sq. ft

MEASUREMENTS CALCULATED BY V1Photos.com ARE DEEMED HIGHLY RELIABLE BUT NOT GUARANTEED.



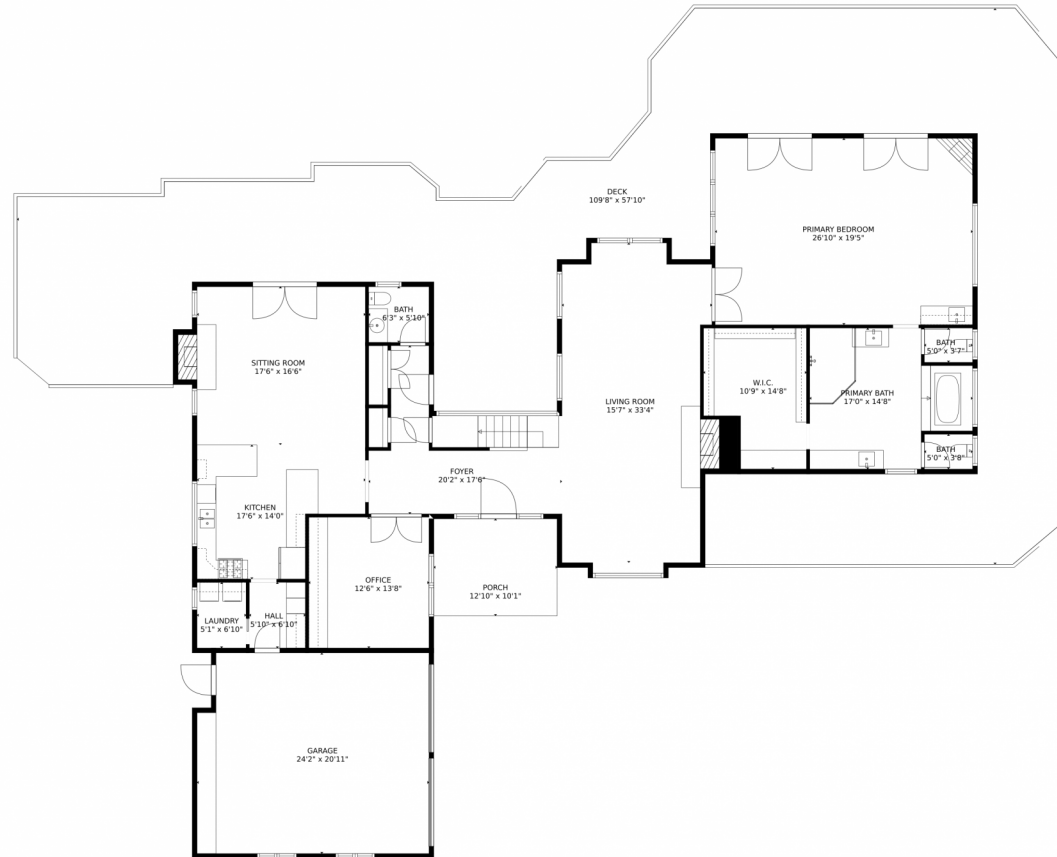
Disclaimer: Sizes and Dimensions are Approximate, Actual May Vary.



Troy Strom
303-888-4162
troy@kentwood.com



322 Greystone Road, Evergreen, CO 80439 – Main Level



TOTAL: 3439 sq. ft
BELOW GROUND: 0 sq. ft, FLOOR 2: 2475 sq. ft, FLOOR 3: 0 sq. ft, FLOOR 4: 964 sq. ft
EXCLUDED AREAS: SCREENED PORCH: 205 sq. ft, GARAGE: 1403 sq. ft, DECK: 2318 sq. ft,
PORCH: 130 sq. ft, BAY WINDOW: 9 sq. ft, FIREPLACE: 23 sq. ft,
PATIO: 827 sq. ft, OPEN TO BELOW: 86 sq. ft

MEASUREMENTS CALCULATED BY V1Photos.com ARE DEEMED HIGHLY RELIABLE BUT NOT GUARANTEED.



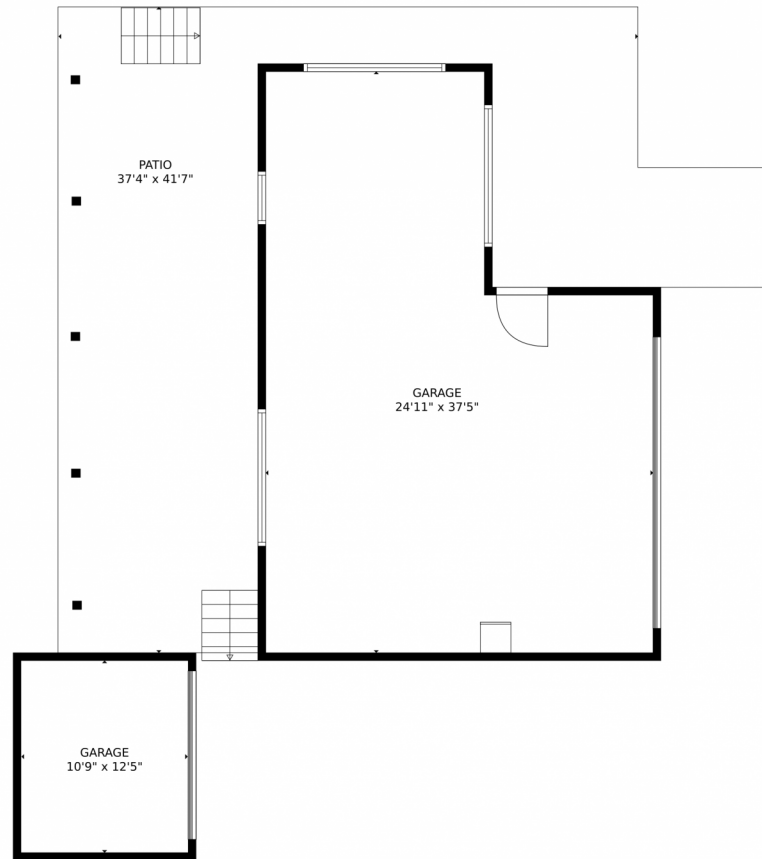
Disclaimer: Sizes and Dimensions are Approximate, Actual May Vary.



Troy Strom
303-888-4162
troy@kentwood.com



322 Greystone Road, Evergreen, CO 80439 – Garage



TOTAL: 3439 sq. ft
BELOW GROUND: 0 sq. ft, FLOOR 2: 2475 sq. ft, FLOOR 3: 0 sq. ft, FLOOR 4: 964 sq. ft
EXCLUDED AREAS: SCREENED PORCH: 205 sq. ft, GARAGE: 1403 sq. ft, DECK: 2318 sq. ft,
PORCH: 130 sq. ft, BAY WINDOW: 9 sq. ft, FIREPLACE: 23 sq. ft,
PATIO: 827 sq. ft, OPEN TO BELOW: 86 sq. ft

MEASUREMENTS CALCULATED BY V1Photos.com ARE DEEMED HIGHLY RELIABLE BUT NOT GUARANTEED.



Disclaimer: Sizes and Dimensions are Approximate, Actual May Vary.

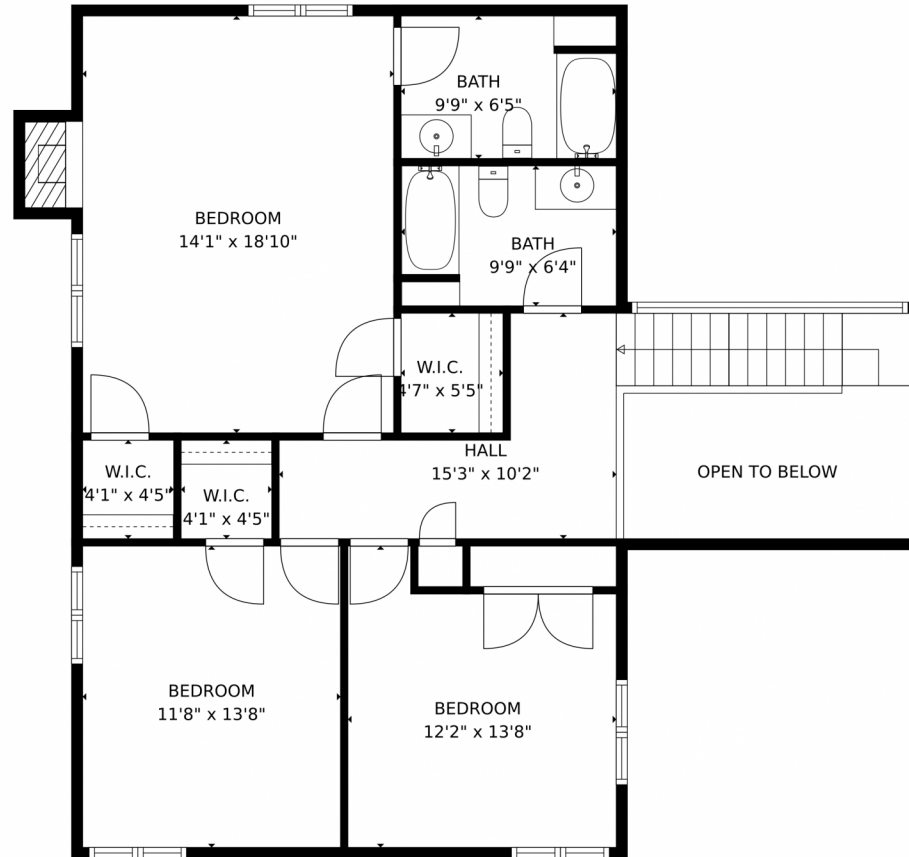


Troy Strom
303-888-4162
troy@kentwood.com



Scan code
for more
property
details

322 Greystone Road, Evergreen, CO 80439 – Second Level



TOTAL: 3439 sq. ft
BELOW GROUND: 0 sq. ft, FLOOR 2: 2475 sq. ft, FLOOR 3: 0 sq. ft, FLOOR 4: 964 sq. ft
EXCLUDED AREAS: SCREENED PORCH: 205 sq. ft, GARAGE: 1403 sq. ft, DECK: 2318 sq. ft,
PORCH: 130 sq. ft, BAY WINDOW: 9 sq. ft, FIREPLACE: 23 sq. ft,
PATIO: 827 sq. ft, OPEN TO BELOW: 86 sq. ft

MEASUREMENTS CALCULATED BY V1Photos.com ARE DEEMED HIGHLY RELIABLE BUT NOT GUARANTEED.



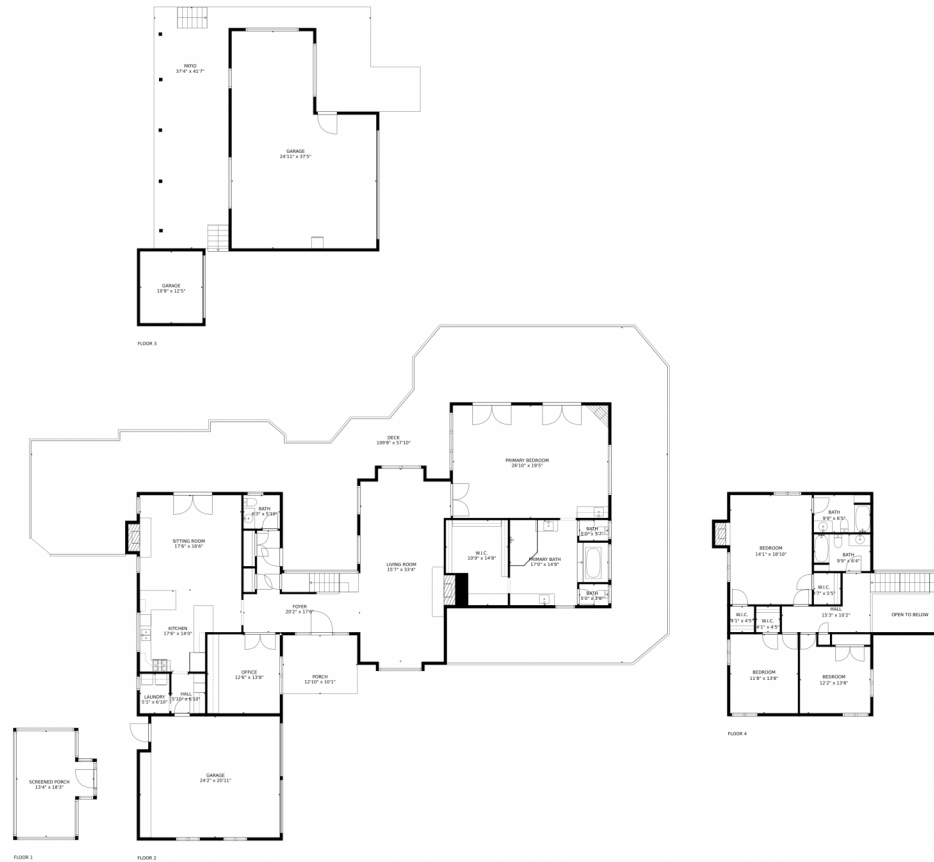
Disclaimer: Sizes and Dimensions are Approximate, Actual May Vary.



Troy Strom
303-888-4162
troy@kentwood.com



322 Greystone Road, Evergreen, CO 80439 – All Levels



TOTAL: 3439 sq. ft
BELOW GROUND: 0 sq. ft, FLOOR 2: 2475 sq. ft, FLOOR 3: 0 sq. ft, FLOOR 4: 964 sq. ft
EXCLUDED AREAS: SCREENED PORCH: 205 sq. ft, GARAGE: 1403 sq. ft, DECK: 2318 sq. ft,
PORCH: 130 sq. ft, BAY WINDOW: 9 sq. ft, FIREPLACE: 23 sq. ft,
PATIO: 827 sq. ft, OPEN TO BELOW: 86 sq. ft

MEASUREMENTS CALCULATED BY V1Photos.com ARE DEEMED HIGHLY RELIABLE BUT NOT GUARANTEED.



Disclaimer: Sizes and Dimensions are Approximate, Actual May Vary.



Troy Strom
303-888-4162
troy@kentwood.com

