

11499 Flatiron Drive
Lafayette, CO 80026
COMMUNITY: Brownsville

MLS # 4443203
PRICE
\$1,250,000



Single Family



4100 SQFT



3 Beds



2/1 Baths



2 Car



7.18 Acre

PROPERTY DETAILS

Rare opportunity to own a 7+ acre horse property in Boulder County. Features include a private pond, valuable water rights, and a desirable location in the Brownsville Subdivision. The custom brick ranch offers a custom kitchen with granite counters, lots of natural light, and extensive hardwood floors. The large primary suite has 4 closets and a private 5 piece bath. The property also includes a full open basement, a large covered patio, outbuildings for workshop and storage, and a large horse pasture. Enjoy amazing views and privacy, just minutes from Boulder and Old Town Lafayette. Unlimited potential!



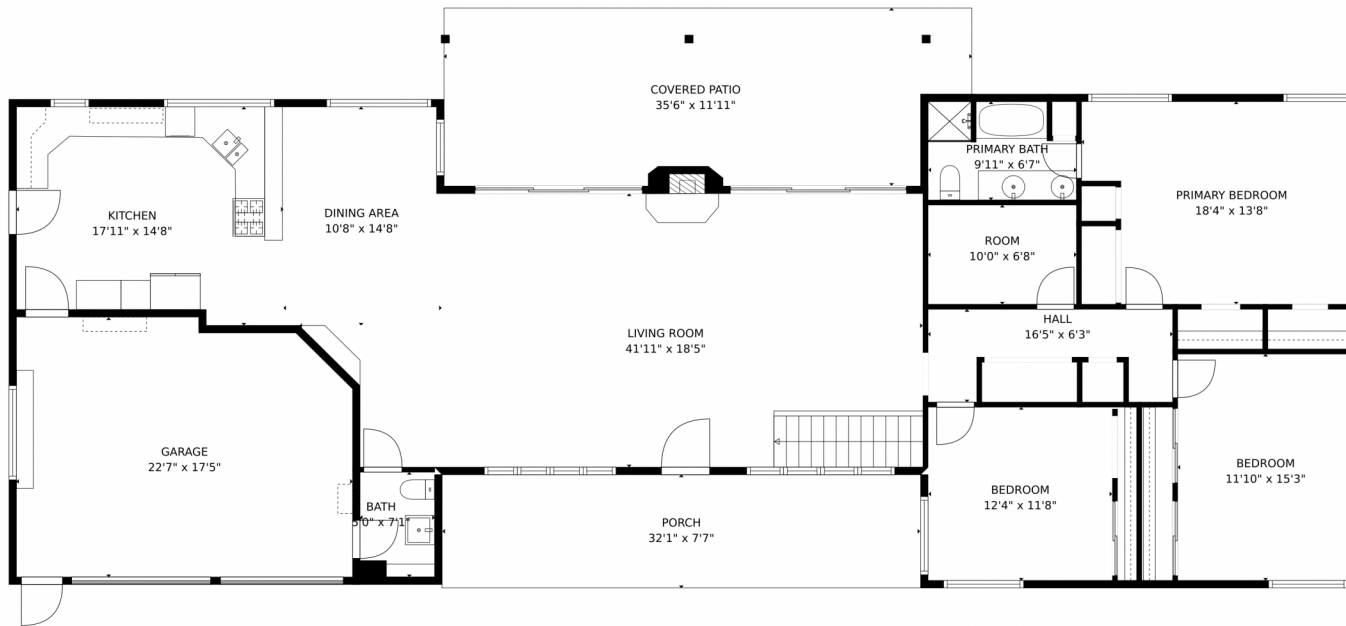
Eric Carlton
303-520-4444
ericjcarlton@comcast.net



Scan code
for more
property
details



11499 Flatiron Drive, Lafayette, CO 80026 – Main Level



TOTAL: 1966 sq. ft
BELOW GROUND: 0 sq. ft, FLOOR 2: 1966 sq. ft
EXCLUDED AREAS: BASEMENT: 1870 sq. ft, GARAGE: 377 sq. ft, ROOM: 67 sq. ft,
COVERED PATIO: 397 sq. ft, PORCH: 245 sq. ft
MEASUREMENTS CALCULATED BY V1Photos.com ARE DEEMED HIGHLY RELIABLE BUT NOT GUARANTEED.



Disclaimer: Sizes and Dimensions are Approximate, Actual May Vary.

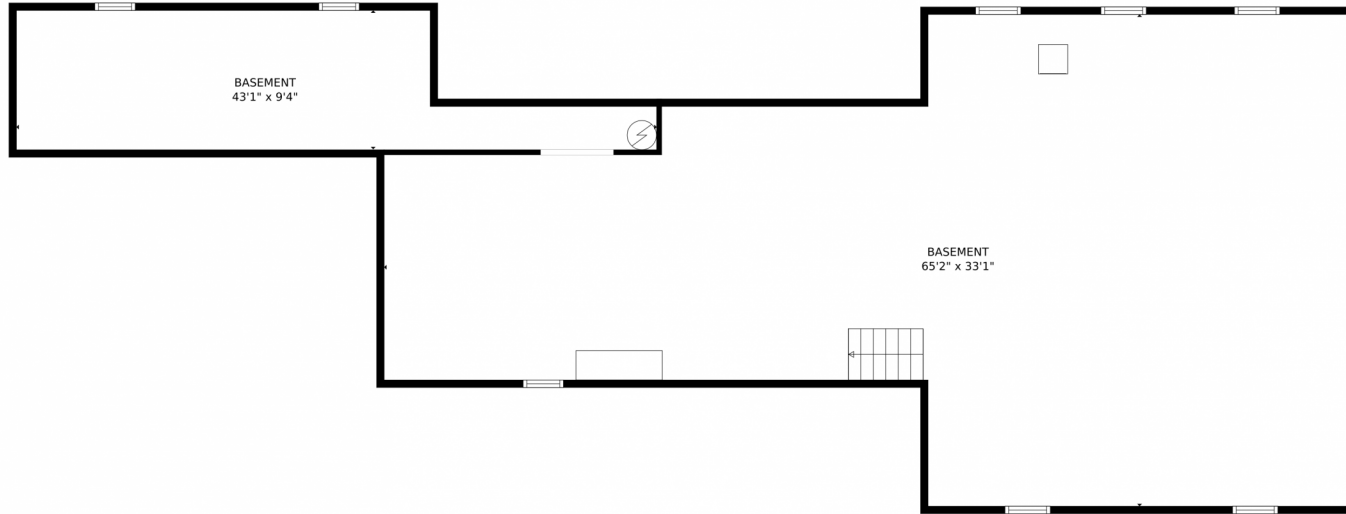


Eric Carlton
303-520-4444
ericjcarlton@comcast.net



Scan code
for more
property
details

11499 Flatiron Drive, Lafayette, CO 80026 – Lower Level



TOTAL: 1966 sq. ft
BELOW GROUND: 0 sq. ft, FLOOR 2: 1966 sq. ft
EXCLUDED AREAS: BASEMENT: 1870 sq. ft, GARAGE: 377 sq. ft, ROOM: 67 sq. ft,
COVERED PATIO: 397 sq. ft, PORCH: 245 sq. ft
MEASUREMENTS CALCULATED BY V1Photos.com ARE DEEMED HIGHLY RELIABLE BUT NOT GUARANTEED.



Disclaimer: Sizes and Dimensions are Approximate, Actual May Vary.



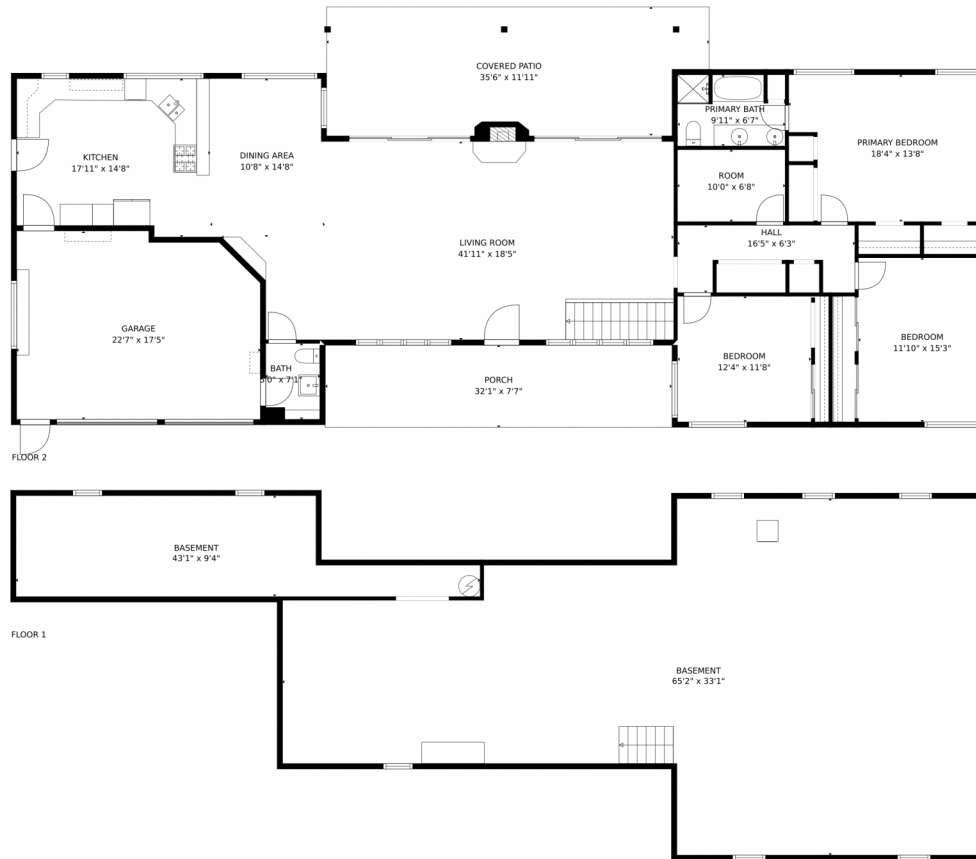
Eric Carlton
303-520-4444
ericjcarlton@comcast.net



Scan code
for more
property
details



11499 Flatiron Drive, Lafayette, CO 80026 – All Levels



TOTAL: 1966 sq. ft
BELOW GROUND: 0 sq. ft, FLOOR 2: 1966 sq. ft
EXCLUDED AREAS: BASEMENT: 1870 sq. ft, GARAGE: 377 sq. ft, ROOM: 67 sq. ft,
COVERED PATIO: 397 sq. ft, PORCH: 245 sq. ft

MEASUREMENTS CALCULATED BY V1Photos.com ARE DEEMED HIGHLY RELIABLE BUT NOT GUARANTEED.



Disclaimer: Sizes and Dimensions are Approximate, Actual May Vary.



Eric Carlton
303-520-4444
ericjcarlton@comcast.net

