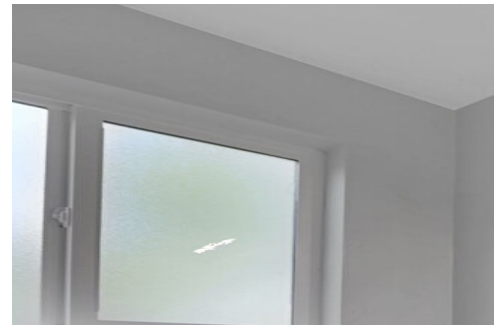




13246 Peacock Drive  
Lone Tree, CO 80124



Single Family

3000 SQFT

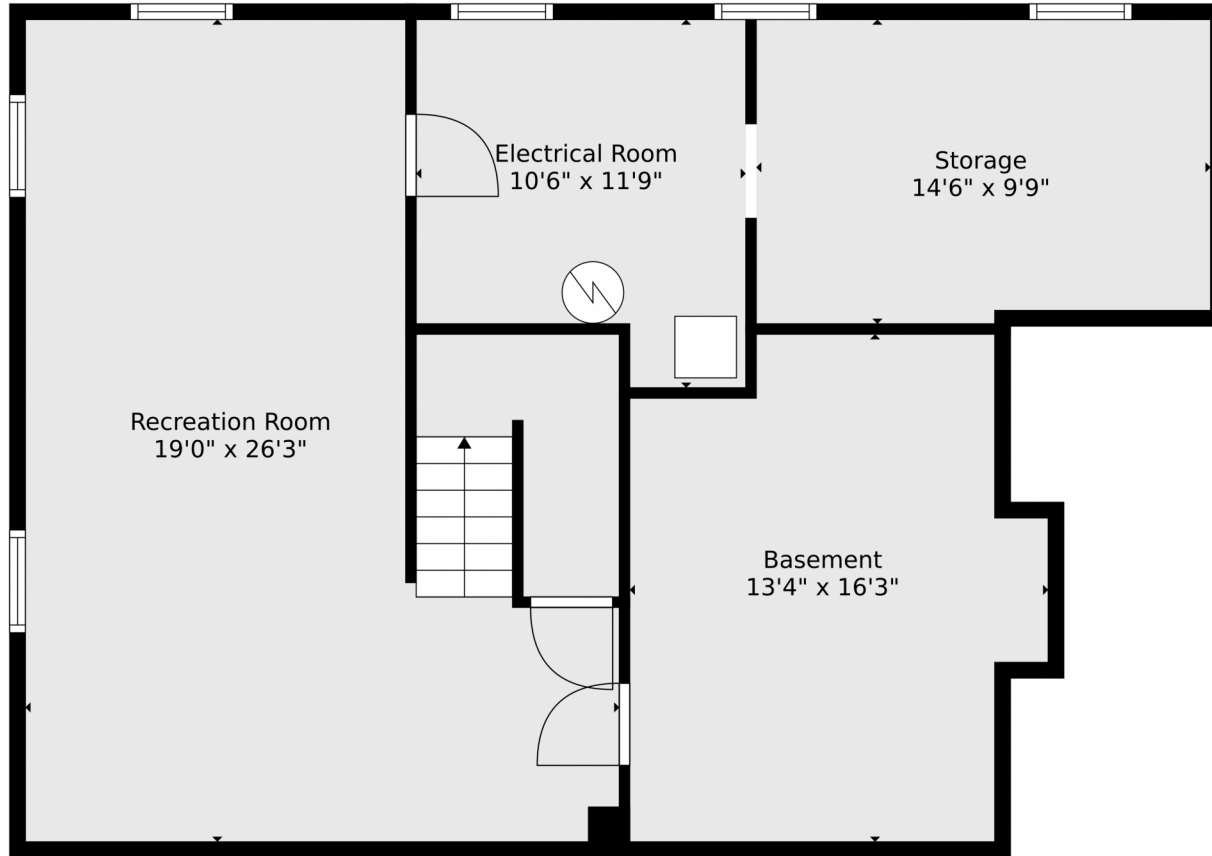
4 Beds

2/1 Baths



**Olga Telesin**  
720-365-4651  
olga@exitrealttydtc.com





**TOTAL: 2285 sq. ft**  
Below Ground: 441 sq. ft, FLOOR 2: 957 sq. ft, FLOOR 3: 887 sq. ft  
EXCLUDED AREAS: BASEMENT: 194 sq. ft, STORAGE: 142 sq. ft, ELECTRICAL ROOM: 110 sq. ft,  
GARAGE: 425 sq. ft, DECK: 147 sq. ft, FIREPLACE: 10 sq. ft

Floor Plan Created By V1photos.com. Measurements Deamed Highly Reliable But Not Guaranteed.

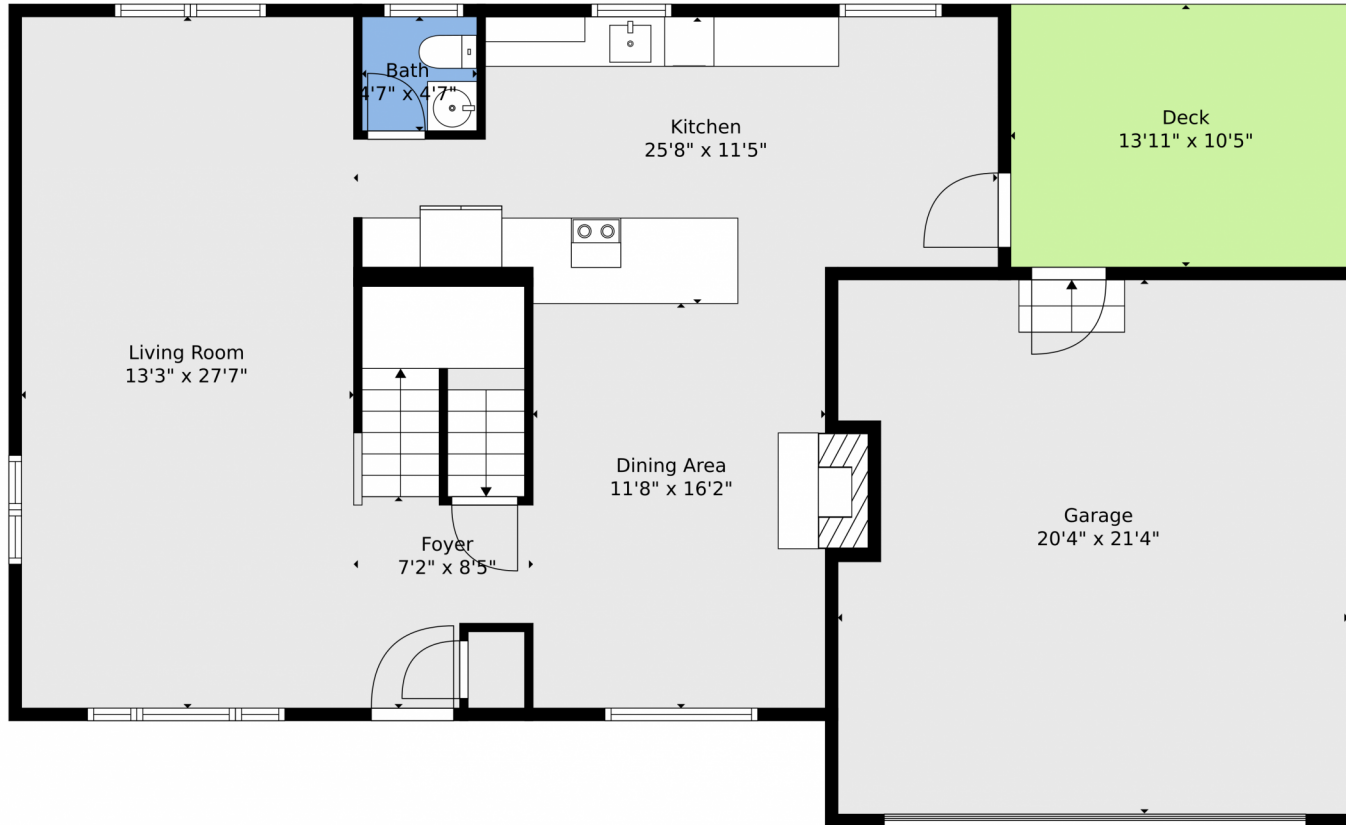


Disclaimer: Sizes and Dimensions are Approximate, Actual May Vary.



**Olga Telesin**  
720-365-4651  
olga@exitrealttydtc.com





**TOTAL: 2285 sq. ft**  
Below Ground: 441 sq. ft, FLOOR 2: 957 sq. ft, FLOOR 3: 887 sq. ft  
EXCLUDED AREAS: BASEMENT: 194 sq. ft, STORAGE: 142 sq. ft, ELECTRICAL ROOM: 110 sq. ft,  
GARAGE: 425 sq. ft, DECK: 147 sq. ft, FIREPLACE: 10 sq. ft

Floor Plan Created By V1photos.com. Measurements Deamed Highly Reliable But Not Guaranteed.



Disclaimer: Sizes and Dimensions are Approximate, Actual May Vary.



**Olga Telesin**  
720-365-4651  
olga@exitrealttydte.com





**TOTAL: 2285 sq. ft**  
Below Ground: 441 sq. ft, FLOOR 2: 957 sq. ft, FLOOR 3: 887 sq. ft  
EXCLUDED AREAS: BASEMENT: 194 sq. ft, STORAGE: 142 sq. ft, ELECTRICAL ROOM: 110 sq. ft,  
GARAGE: 425 sq. ft, DECK: 147 sq. ft, FIREPLACE: 10 sq. ft  
Floor Plan Created By V1photos.com, Measurements Deamed Highly Reliable But Not Guaranteed.



Disclaimer: Sizes and Dimensions are Approximate, Actual May Vary.

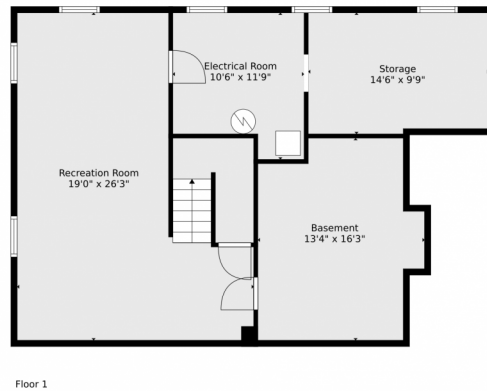


**Olga Telesin**  
720-365-4651  
olga@exitrealttydtc.com





# 13246 Peacock Drive, Lone Tree, CO 80124 – floorplan\_all\_0



**TOTAL: 2285 sq. ft**  
Below Ground: 441 sq. ft, FLOOR 2: 957 sq. ft, FLOOR 3: 887 sq. ft  
EXCLUDED AREAS: BASEMENT: 194 sq. ft, STORAGE: 142 sq. ft, ELECTRICAL ROOM: 110 sq. ft,  
GARAGE: 425 sq. ft, DECK: 147 sq. ft, FIREPLACE: 10 sq. ft

Floor Plan Created By V1photos.com. Measurements Deamed Highly Reliable But Not Guaranteed.



Disclaimer: Sizes and Dimensions are Approximate, Actual May Vary.



**Olga Telesin**  
720-365-4651  
olga@exitrealtydtc.com



Scan code  
for more  
property  
details