

37057 Timber Drive
Elizabeth, CO 80107
COMMUNITY: Pines



Single Family



3459 SQFT



4 Beds



3 Baths



3 Car



5 Acre

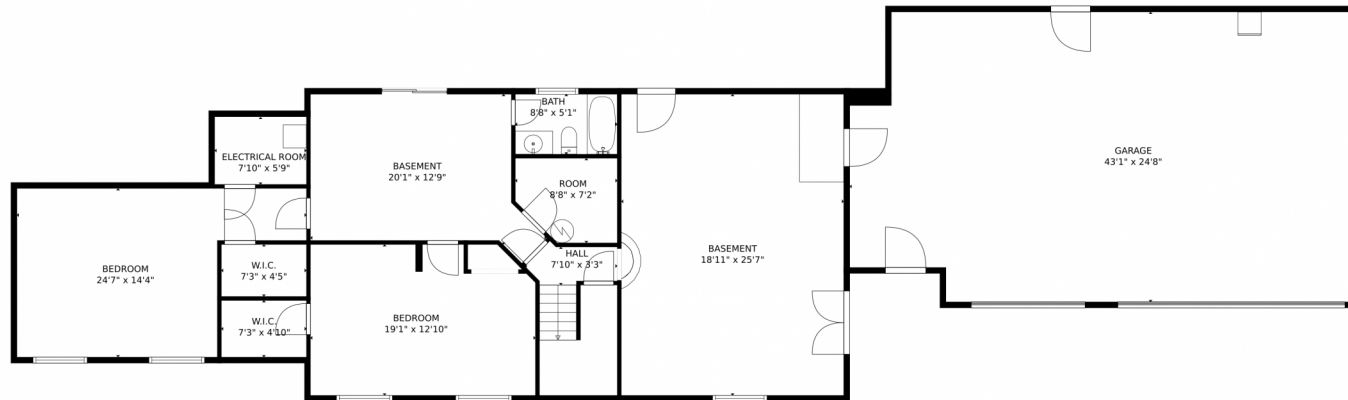


Jeff Gadd
720-231-2509
jeffgadd07@gmail.com



Scan code
for more
property
details





TOTAL: 3073 sq. ft
BELOW GROUND: 1522 sq. ft, FLOOR 2: 1551 sq. ft
EXCLUDED AREAS: GARAGE: 1013 sq. ft, ELECTRICAL ROOM: 45 sq. ft
MEASUREMENTS CALCULATED BY V1Photos.com ARE DEEMED HIGHLY RELIABLE BUT NOT GUARANTEED.

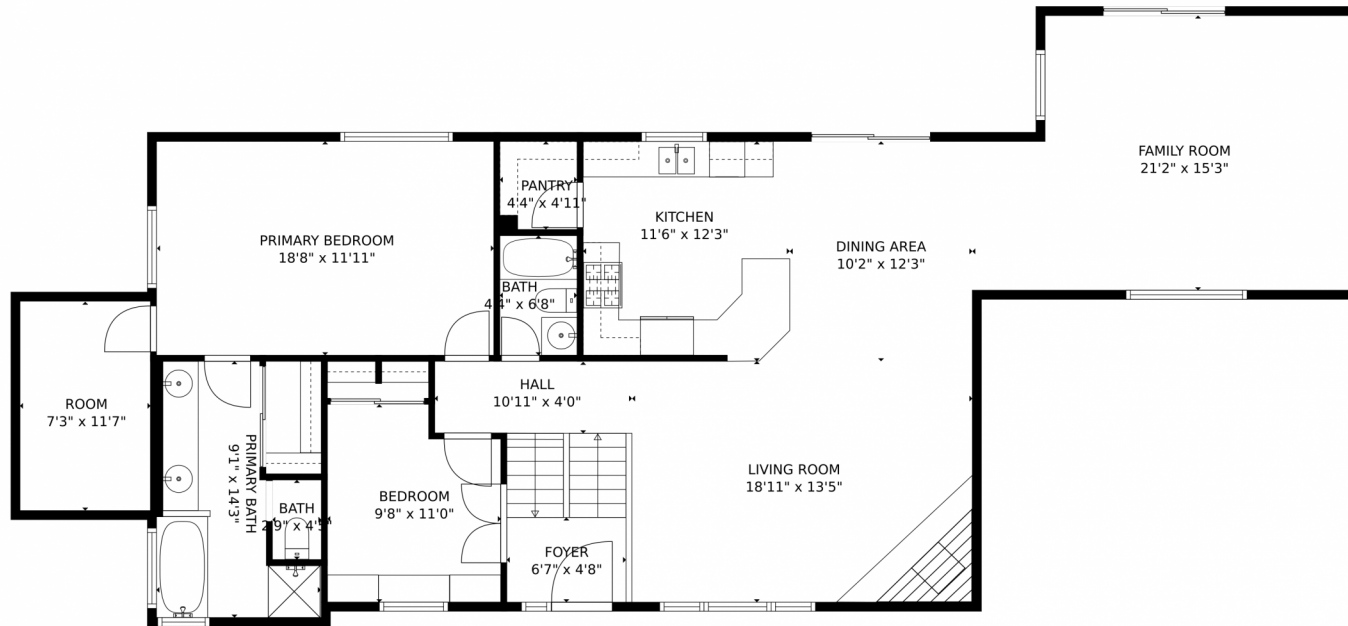


Disclaimer: Sizes and Dimensions are Approximate, Actual May Vary.



Jeff Gadd
720-231-2509
jeffgadd07@gmail.com





TOTAL: 3073 sq. ft
BELOW GROUND: 1522 sq. ft, FLOOR 2: 1551 sq. ft
EXCLUDED AREAS: GARAGE: 1013 sq. ft, ELECTRICAL ROOM: 45 sq. ft
MEASUREMENTS CALCULATED BY V1Photos.COM ARE DEEMED HIGHLY RELIABLE BUT NOT GUARANTEED.

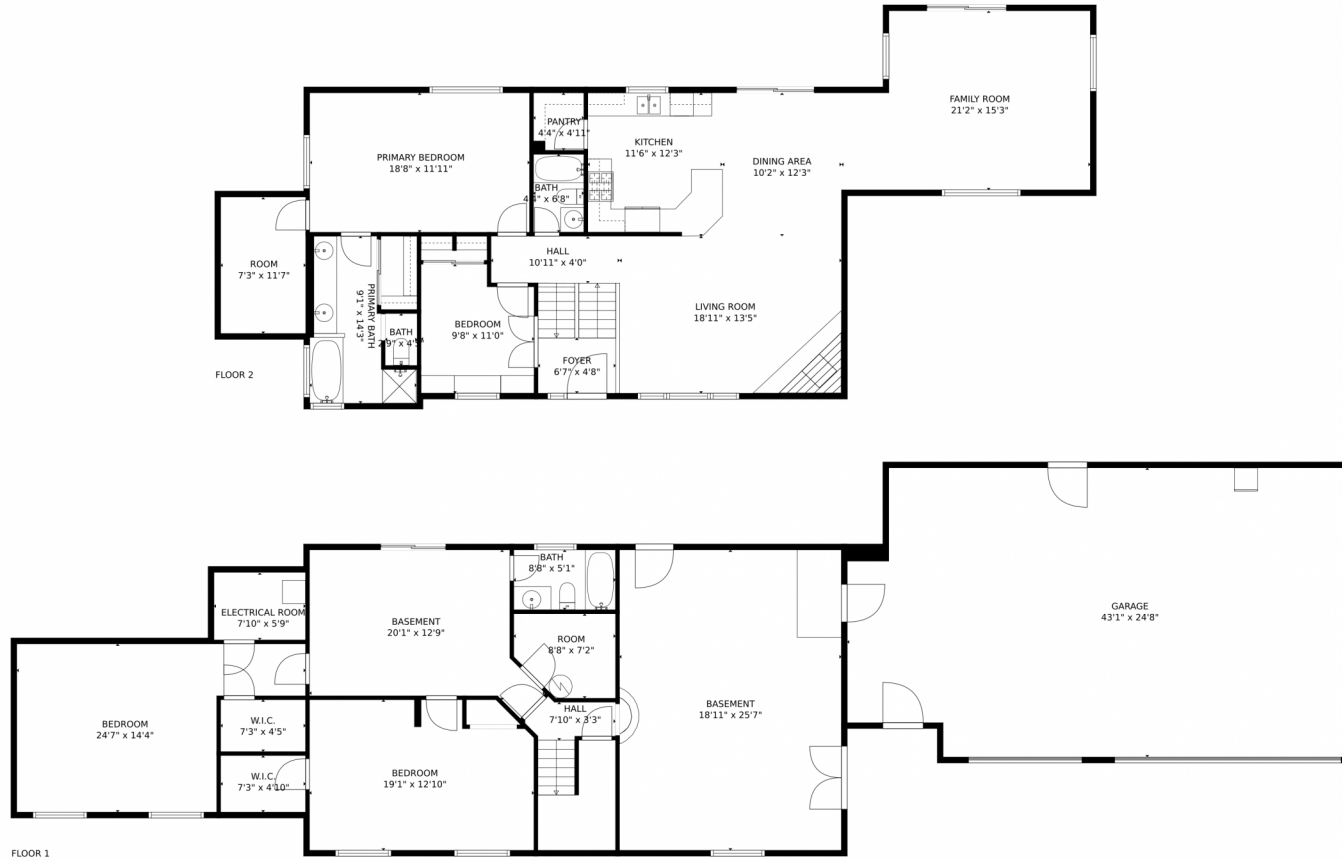


Disclaimer: Sizes and Dimensions are Approximate, Actual May Vary.



Jeff Gadd
720-231-2509
jeffgadd07@gmail.com





TOTAL: 3073 sq. ft
BELOW GROUND: 1522 sq. ft, FLOOR 2: 1551 sq. ft
EXCLUDED AREAS: GARAGE: 1013 sq. ft, ELECTRICAL ROOM: 45 sq. ft
MEASUREMENTS CALCULATED BY V1Photos.com ARE DEEMED HIGHLY RELIABLE BUT NOT GUARANTEED.



Disclaimer: Sizes and Dimensions are Approximate, Actual May Vary.



Jeff Gadd
720-231-2509
jeffgadd07@gmail.com

