



10805 Beas Drive  
 Conifer, CO 80433  
 COMMUNITY: Conifer Mountain

MLS # 4365670  
 PRICE \$745,000



Single Family   2317 SQFT   4 Beds   3 Baths   3 Car   2 Acre

## PROPERTY DETAILS

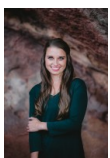
Open House Saturday July 27th from 10am - 12pm ! Welcome to your dream home on Conifer Mountain, where breathtaking mountain views take center stage. Enjoy panoramic vistas of the Kenosha and Tarryall Mountain Range and impressive rock outcroppings from the living room and kitchen, creating a serene backdrop to everyday living. Watch local wildlife, including deer, foxes, marmots, bears, and hummingbirds, from the deck while taking in the views. Stargaze at night or savor your morning coffee while enjoying the sunsets from the deck each day. This well-maintained, move-in-ready property features an open floor plan on the main level with vaulted ceilings that enhance the spacious feel. The kitchen offers ample cabinet space and big windows that bathe the space in natural light. Main level also includes a dining area, a primary suite with an updated bath, and two additional bedrooms with an updated bath. Lower level offers a guest suite with a bedroom, bathroom, walk-in closet, and an entertaining living room complete with a built-in bar featuring custom dog kennels. Cozy up by the fireplace or step out to the patio with turf grass and a dog door, ideal for pet owners. The property boasts a three-car garage and a usable lot drenched in sunlight, thanks to its perch on the mountain at an elevation of 9,700 ft. Abundant sunlight is a year-round feature, adding to the charm and warmth of this mountain retreat. Outside, you'll find an ATV trail, an outdoor BBQ area, and



**Kayla Maathuis**  
 303-507-2751  
 kaylasellshomes@gmail.com  
<http://yourjourneyhome.net>



multiple sitting areas to enjoy the stunning surroundings. Additional amenities include RV parking and turn-around parking, ensuring convenience and ample space for all your needs. Conifer Mountain provides fresh mountain air and easy access to a quick commute. Conifer is just 15 minutes away, offering local parks and Staunton Park, while Denver is a mere 45-minute drive for city commuters. Experience the perfect blend of breathtaking views, tranquility, and convenience in this exceptional mountain property.



**Kayla Maathuis**  
303-507-2751  
kaylasellshomes@gmail.com  
<http://yourjourneyhome.net>



Scan code  
for more  
property  
details

