



Single Family



3190 SQFT



4 Beds



3 Baths



2 Car



0.13 Acre



**Brittany Harrison**

719-387-1428

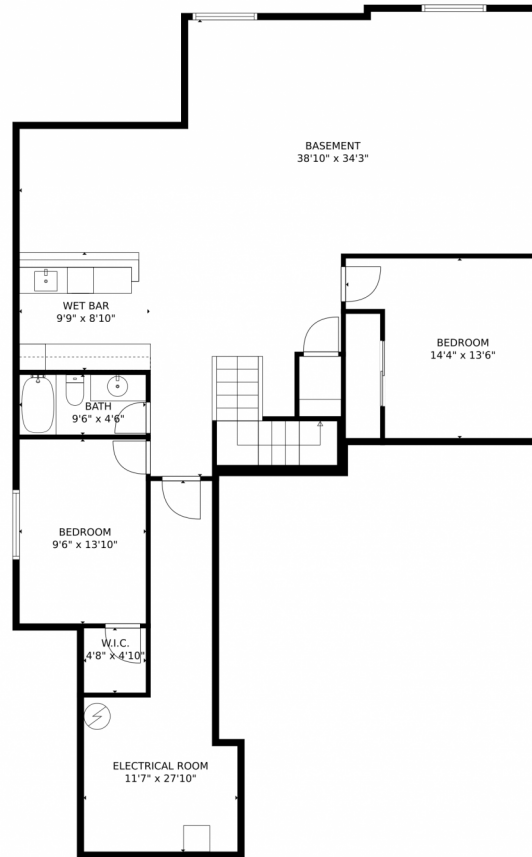
[brittany.harrison@evrealstate.com](mailto:brittany.harrison@evrealstate.com)



Scan code  
for more  
property  
details



# 9850 Golf Crest Drive, Peyton, CO 80831 – Lower Level



**TOTAL: 2978 sq. ft**  
BELOW GROUND: 1326 sq. ft, FLOOR 2: 1652 sq. ft  
EXCLUDED AREAS: ELECTRICAL ROOM: 202 sq. ft, GARAGE: 472 sq. ft, PORCH: 25 sq. ft,  
COVERED PATIO: 93 sq. ft, FIREPLACE: 8 sq. ft

MEASUREMENTS CALCULATED BY V1Photos.com ARE DEEMED HIGHLY RELIABLE BUT NOT GUARANTEED.



Disclaimer: Sizes and Dimensions are Approximate, Actual May Vary.

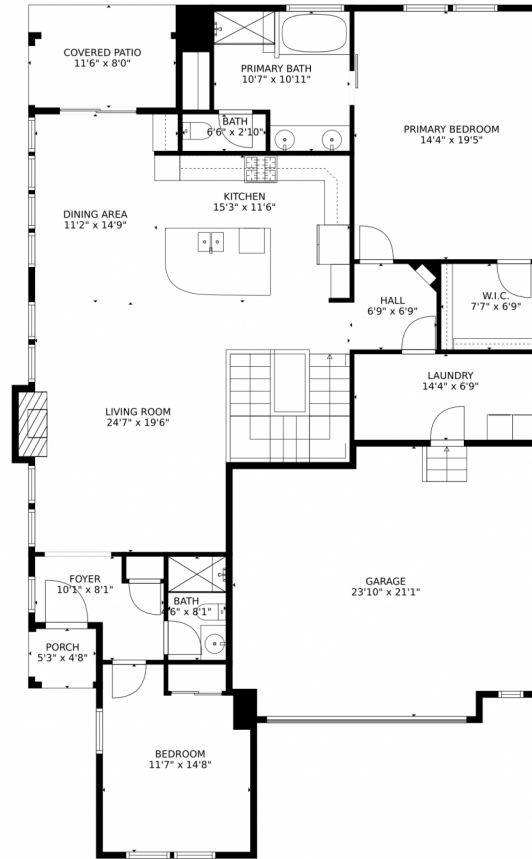


**Brittany Harrison**  
719-387-1428  
brittany.harrison@evrealstate.com



Scan code  
for more  
property  
details

# 9850 Golf Crest Drive, Peyton, CO 80831 — Main Level



**TOTAL: 2978 sq. ft**  
BELOW GROUND: 1326 sq. ft, FLOOR 2: 1652 sq. ft  
EXCLUDED AREAS: ELECTRICAL ROOM: 202 sq. ft, GARAGE: 472 sq. ft, PORCH: 25 sq. ft,  
COVERED PATIO: 93 sq. ft, FIREPLACE: 8 sq. ft

MEASUREMENTS CALCULATED BY V1Photos.com ARE DEEMED HIGHLY RELIABLE BUT NOT GUARANTEED.



Disclaimer: Sizes and Dimensions are Approximate, Actual May Vary.



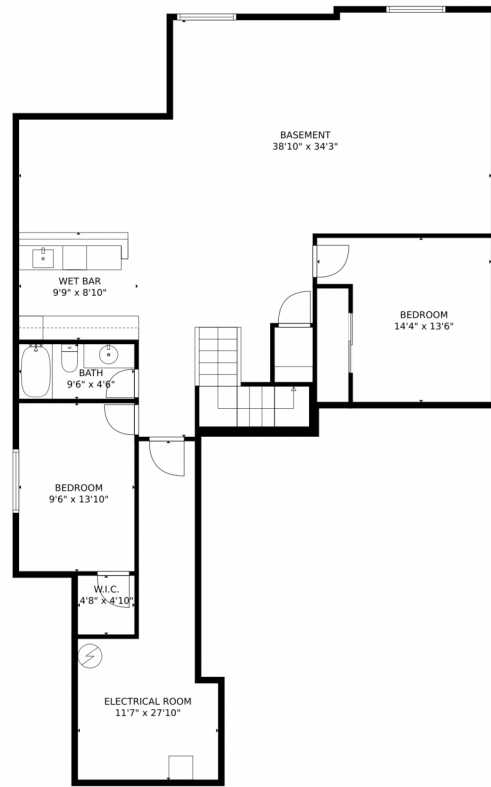
**Brittany Harrison**  
719-387-1428  
brittany.harrison@evrealstate.com



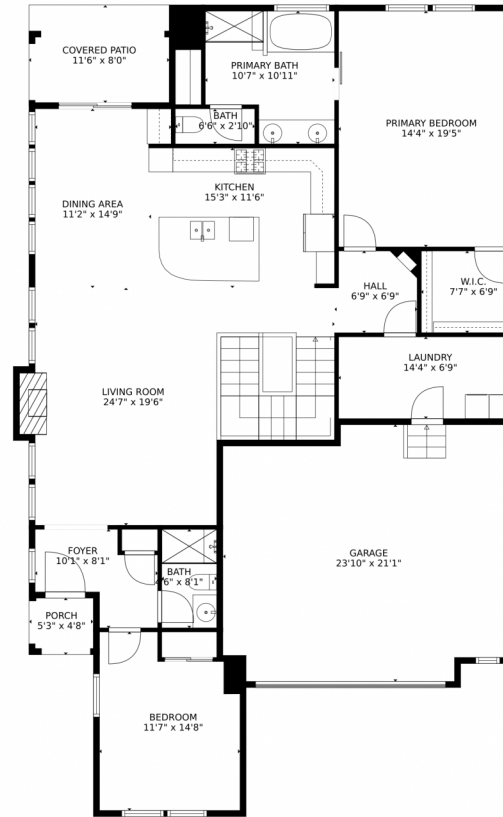
Scan code  
for more  
property  
details



# 9850 Golf Crest Drive, Peyton, CO 80831 — All Levels



FLOOR 1



FLOOR 2

**TOTAL: 2978 sq. ft**  
BELOW GROUND: 1326 sq. ft, FLOOR 2: 1652 sq. ft  
EXCLUDED AREAS: ELECTRICAL ROOM: 202 sq. ft, GARAGE: 472 sq. ft, PORCH: 25 sq. ft,  
COVERED PATIO: 93 sq. ft, FIREPLACE: 8 sq. ft

MEASUREMENTS CALCULATED BY V1Photos.COM ARE DEEMED HIGHLY RELIABLE BUT NOT GUARANTEED.



Disclaimer: Sizes and Dimensions are Approximate, Actual May Vary.



**Brittany Harrison**  
719-387-1428  
brittany.harrison@evrealstate.com

