



17252 E Progress Circle  
 Centennial, CO 80015  
 COMMUNITY: Smoky Hill

MLS # 4222346  
 PRICE \$550,000



Single Family   2638 SQFT   4 Beds   2 Baths   2 Car   0.17 Acre

## PROPERTY DETAILS

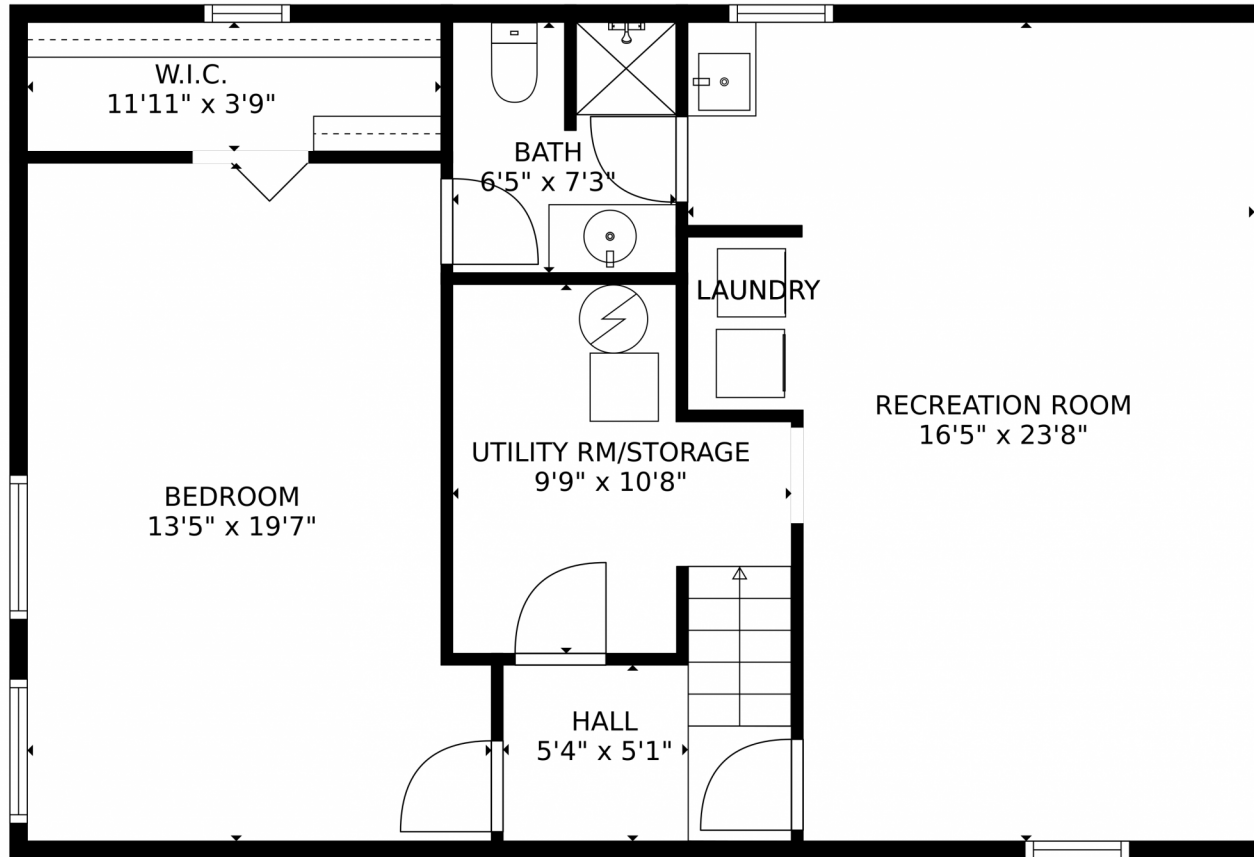
Welcome to your newly remodeled home in Cherry Creek School District! This single-family ranch home offers comfort, convenience, and amenities. The open floor plan and abundant natural light make the living space inviting. With 4 bedrooms and 2 bathrooms, there's plenty of room for relaxation. The newly remodeled kitchen features new cabinets, quartz counters, and backsplash. The finished basement has a great room, bedroom, and bathroom. Outside, enjoy a hot tub, covered deck, and spacious yard. Upgrades include new flooring, siding, roof, and more. The 2-car garage and extended driveway provide ample parking. Community amenities include a pool, tennis courts, and parks. Don't miss out on this great home!



**Ben Slingsby**  
 303-910-9561  
 Ben@Slingsby-Homes.com



17252 E Progress Circle, Centennial, CO 80015 – Lower Level



**TOTAL: 2032 sq. ft**  
BELOW GROUND: 756 sq. ft, FLOOR 2: 1276 sq. ft  
EXCLUDED AREAS: UTILITY RM/STORAGE: 83 sq. ft, GARAGE: 369 sq. ft, DECK: 240 sq. ft,  
PORCH: 31 sq. ft, FIREPLACE: 12 sq. ft  
MEASUREMENTS CALCULATED BY V1Photos.com ARE DEEMED HIGHLY RELIABLE BUT NOT GUARANTEED.



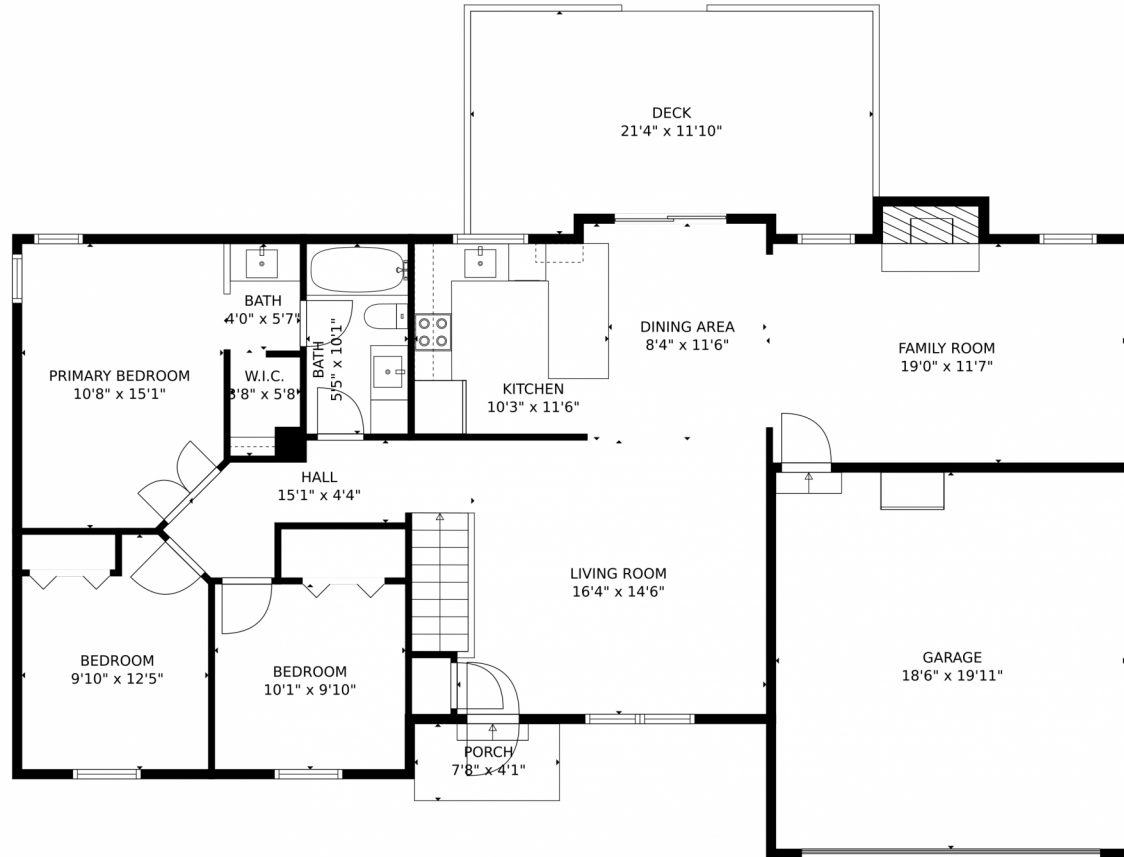
Disclaimer: Sizes and Dimensions are Approximate, Actual May Vary.



**Ben Slingsby**  
303-910-9561  
Ben@Slingsby-Homes.com



# 17252 E Progress Circle, Centennial, CO 80015 – Main Level



**TOTAL: 2032 sq. ft**  
BELOW GROUND: 756 sq. ft, FLOOR 2: 1276 sq. ft  
EXCLUDED AREAS: UTILITY RM/STORAGE: 83 sq. ft, GARAGE: 369 sq. ft, DECK: 240 sq. ft,  
PORCH: 31 sq. ft, FIREPLACE: 12 sq. ft

MEASUREMENTS CALCULATED BY V1Photos.com ARE DEEMED HIGHLY RELIABLE BUT NOT GUARANTEED.



Disclaimer: Sizes and Dimensions are Approximate, Actual May Vary.



**Ben Slingsby**  
303-910-9561  
Ben@Slingsby-Homes.com

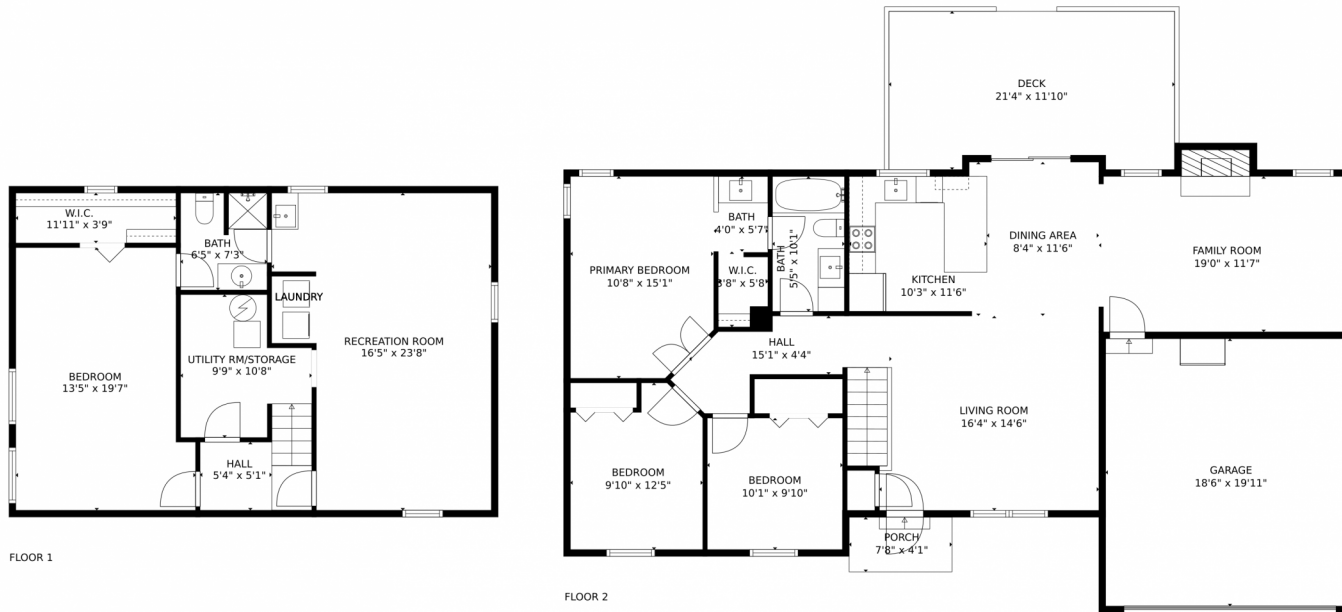


Scan code  
for more  
property  
details





# 17252 E Progress Circle, Centennial, CO 80015 – All Levels



**TOTAL: 2032 sq. ft**  
BELOW GROUND: 756 sq. ft, FLOOR 2: 1276 sq. ft  
EXCLUDED AREAS: UTILITY RM/STORAGE: 83 sq. ft, GARAGE: 369 sq. ft, DECK: 240 sq. ft,  
PORCH: 31 sq. ft, FIREPLACE: 12 sq. ft

MEASUREMENTS CALCULATED BY V1Photos.com ARE DEEMED HIGHLY RELIABLE BUT NOT GUARANTEED.



Disclaimer: Sizes and Dimensions are Approximate, Actual May Vary.



**Ben Slingsby**  
303-910-9561  
Ben@Slingsby-Homes.com

