

Single Family



3598 SQFT



6 Beds



3 Baths



2 Car



0.51 Acre



**Jordan Kermes**

952-956-2958

[jkermes@wedgewoodhomesrealty.com](mailto:jkermes@wedgewoodhomesrealty.com)

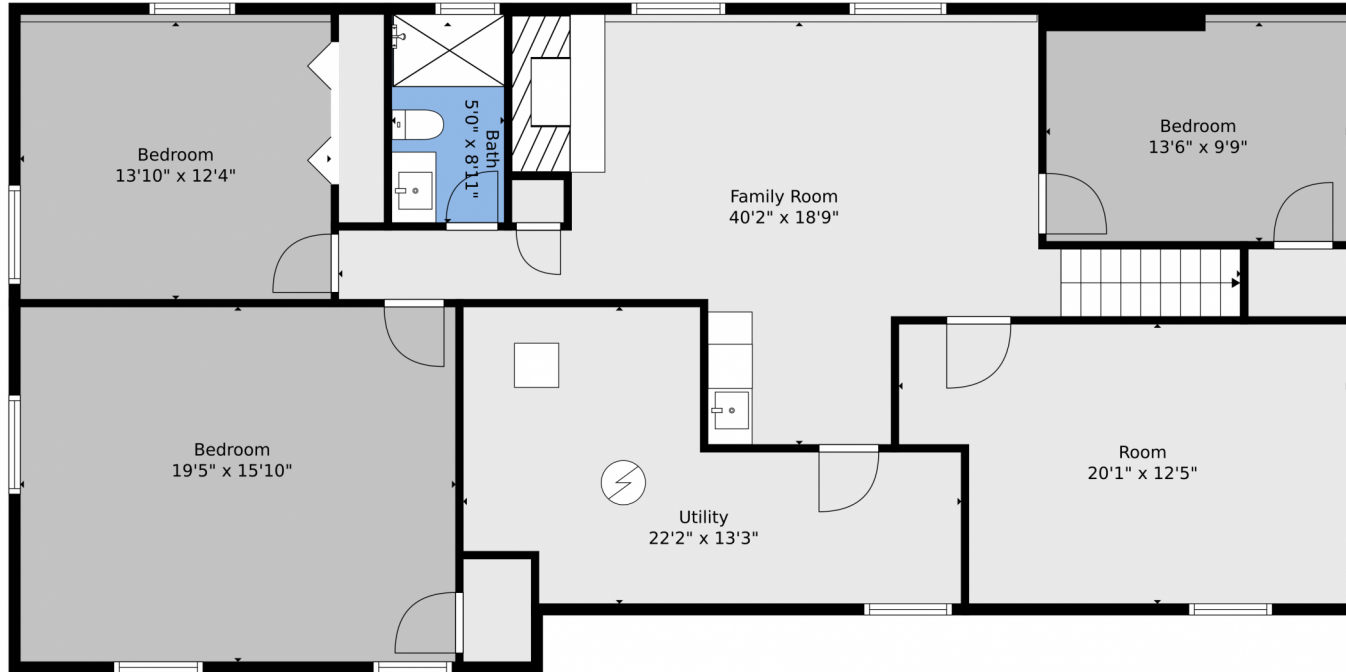
<https://colorado.wedgewoodhomesrealty.com>



Scan code  
for more  
property  
details



1820 Wildwood Drive, Colorado Springs, CO 80918 – Lower Level



**TOTAL: 3341 sq. ft**  
Below Ground: 1613 sq. ft, FLOOR 2: 1728 sq. ft  
EXCLUDED AREAS: PORCH: 31 sq. ft, DECK: 191 sq. ft, GARAGE: 504 sq. ft  
Floor Plan Created By V1photos.com, Measurements Deamed Highly Reliable But Not Guaranteed.



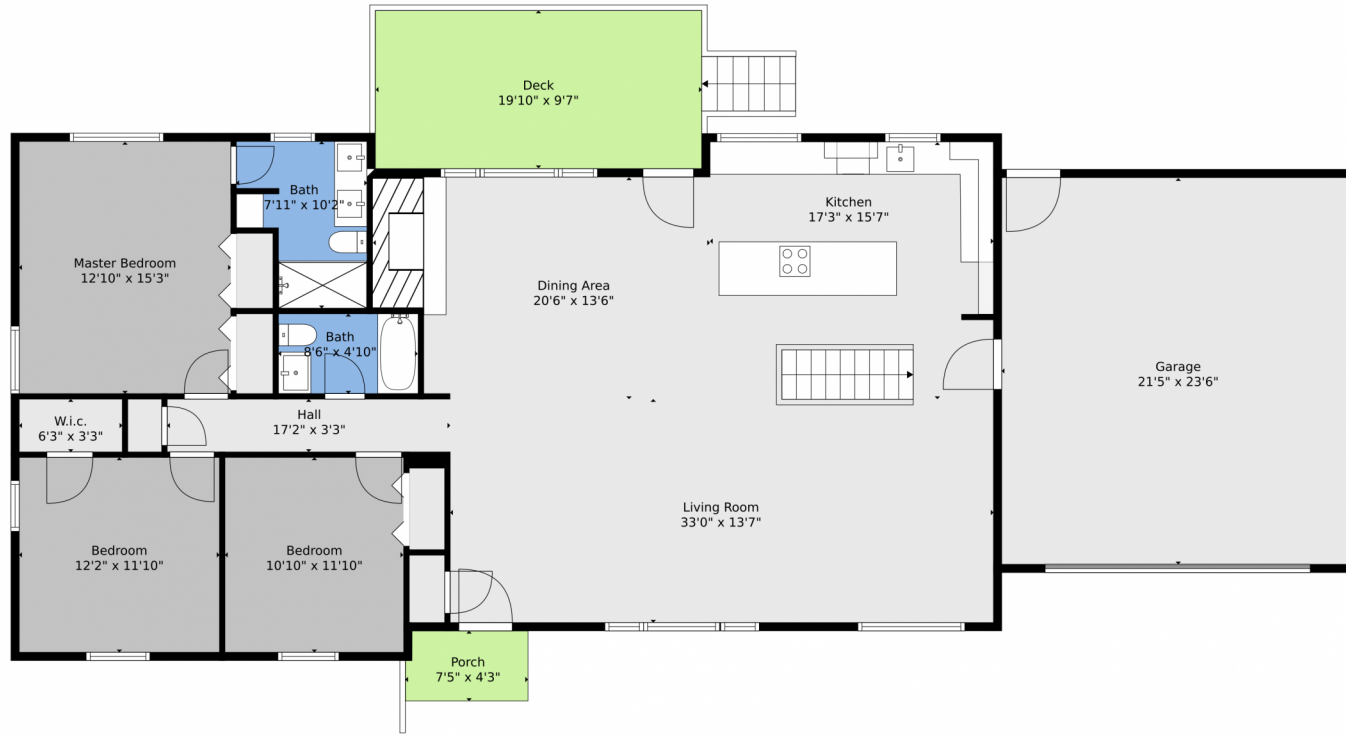
Disclaimer: Sizes and Dimensions are Approximate, Actual May Vary.



**Jordan Kermes**  
952-956-2958  
jkermes@wedgewoodhomesrealty.com  
<https://colorado.wedgewoodhomesrealty.com>



# 1820 Wildwood Drive, Colorado Springs, CO 80918 – Main Level



**TOTAL: 3341 sq. ft**  
Below Ground: 1613 sq. ft, FLOOR 2: 1728 sq. ft  
EXCLUDED AREAS: PORCH: 31 sq. ft, DECK: 191 sq. ft, GARAGE: 504 sq. ft  
Floor Plan Created By V1photos.com, Measurements Deamed Highly Reliable But Not Guaranteed.



Disclaimer: Sizes and Dimensions are Approximate, Actual May Vary.



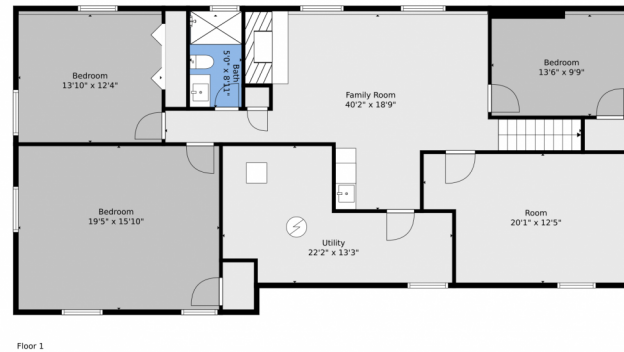
**Jordan Kermes**  
952-956-2958  
jkermes@wedgewoodhomesrealty.com  
<https://colorado.wedgewoodhomesrealty.com>



Scan code  
for more  
property  
details



# 1820 Wildwood Drive, Colorado Springs, CO 80918 – All Levels



**TOTAL: 3341 sq. ft**  
Below Ground: 1613 sq. ft, FLOOR 2: 1728 sq. ft  
EXCLUDED AREAS: PORCH: 31 sq. ft, DECK: 191 sq. ft, GARAGE: 504 sq. ft  
Floor Plan Created By V1photos.com, Measurements Deamed Highly Reliable But Not Guaranteed.



Disclaimer: Sizes and Dimensions are Approximate, Actual May Vary.



**Jordan Kermes**  
952-956-2958  
jkermes@wedgewoodhomesrealty.com  
<https://colorado.wedgewoodhomesrealty.com>

