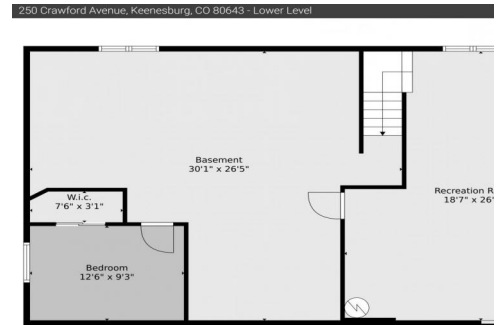




250 Crawford Avenue
Keenesburg, CO 80643



Single Family



2577 SQFT



4 Beds



2 Baths



2 Car



0.21 Acre



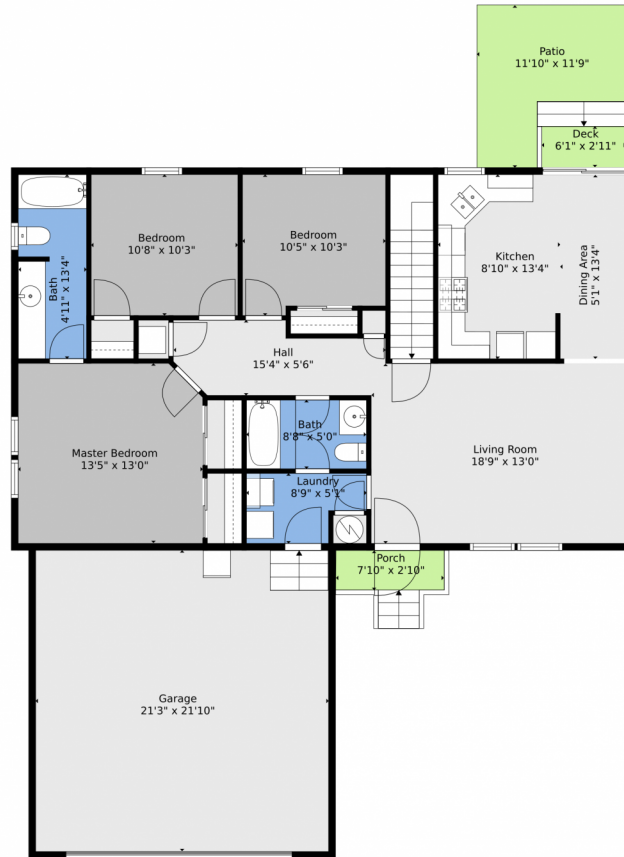
Cathy Burr
303-887-2800
cathyburr@remax.net



Scan code
for more
property
details



250 Crawford Avenue, Keenesburg, CO 80643 – Main Level



TOTAL: 1809 sq. ft
Below Ground: 619 sq. ft, FLOOR 2: 1190 sq. ft
EXCLUDED AREAS: BASEMENT: 551 sq. ft, GARAGE: 464 sq. ft, PORCH: 31 sq. ft,
DECK: 30 sq. ft, PATIO: 105 sq. ft

Floor Plan Created By V1photos.com, Measurements Deamed Highly Reliable But Not Guaranteed.



Disclaimer: Sizes and Dimensions are Approximate, Actual May Vary.



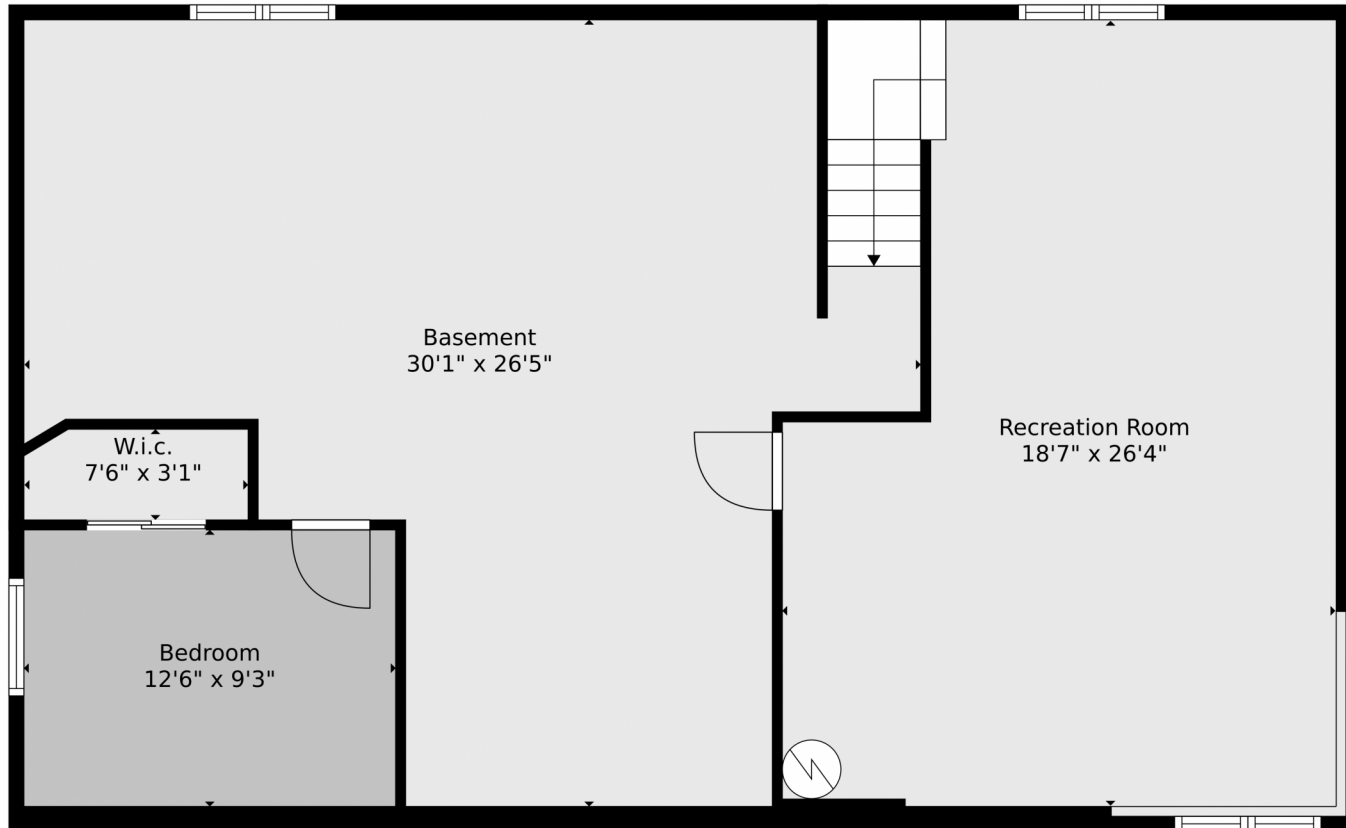
Cathy Burr
303-887-2800
cathyburr@remax.net



Scan code
for more
property
details



250 Crawford Avenue, Keenesburg, CO 80643 – Lower Level



TOTAL: 1809 sq. ft
Below Ground: 619 sq. ft, FLOOR 2: 1190 sq. ft
EXCLUDED AREAS: BASEMENT: 551 sq. ft, GARAGE: 464 sq. ft, PORCH: 31 sq. ft,
DECK: 30 sq. ft, PATIO: 105 sq. ft

Floor Plan Created By V1photos.com, Measurements Deamed Highly Reliable But Not Guaranteed.



Disclaimer: Sizes and Dimensions are Approximate, Actual May Vary.



Cathy Burr
303-887-2800
cathyburr@remax.net



Scan code
for more
property
details

250 Crawford Avenue, Keenesburg, CO 80643 – All Levels



TOTAL: 1809 sq. ft
Below Ground: 619 sq. ft, FLOOR 2: 1190 sq. ft
EXCLUDED AREAS: BASEMENT: 551 sq. ft, GARAGE: 464 sq. ft, PORCH: 31 sq. ft,
DECK: 30 sq. ft, PATIO: 105 sq. ft

Floor Plan Created By V1photos.com, Measurements Deamed Highly Reliable But Not Guaranteed.



Disclaimer: Sizes and Dimensions are Approximate, Actual May Vary.



Cathy Burr
303-887-2800
cathyburr@remax.net

